



INTERIOR ATRIUM · KINDRED CAPITAL BUILDING

## YOUR BUSINESS, ELEVATED.

Situated in a prime downtown location, the Kindred Capital Building offers the ideal setting for businesses that want professional presence, easy access, and a community designed for growth.

NOW LEASING AT 555 5TH AVE

## LEASE HIGHLIGHTS

### 01 OFFICE SUITES

Private and professional office suites available in a range of sizes to fit your team.

### 02 CREATIVE SPACE

Flexible floor plans designed to support modern, collaborative work environments.

### 03 NEGOTIABLE TERMS

Flexible lease terms structured to meet the needs of your business timeline.

### 04 UTILITIES & CAM FEES

Utilities and common area maintenance fees are included in your lease.

### 05 DEDICATED MANAGEMENT

On-site property management that keeps the building well-maintained and responsive.

### 06 PRIME ACCESS

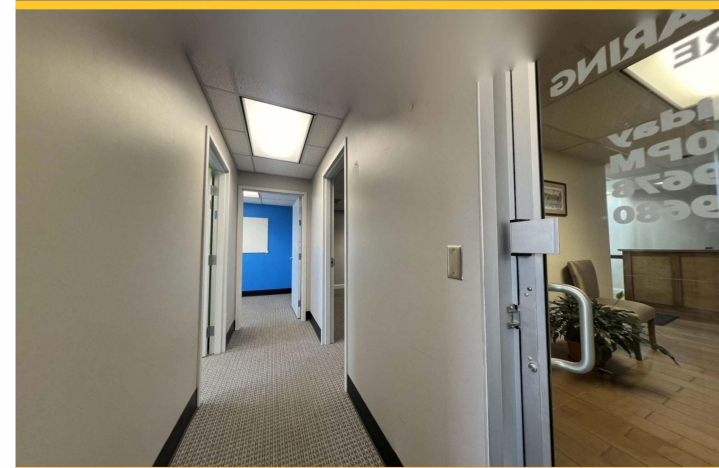
Convenient to major roadways, public transit, restaurants, and government offices.

Contact: Brody Nash 304-208-6190  
Century 21 Commercial

Century 21 Homes and Land  
5150 US-60 Ste 240 Barboursville, WV 25504  
Patrick Lucas, Broker



VERSATILE SPACE · MULTIPLE CONFIGURATIONS



## READY TO TOUR?

Spaces are limited. Schedule a tour at your convenience.

**KINDRED CAPITAL BUILDING**  
555 5th Avenue | Huntington, WV 25701