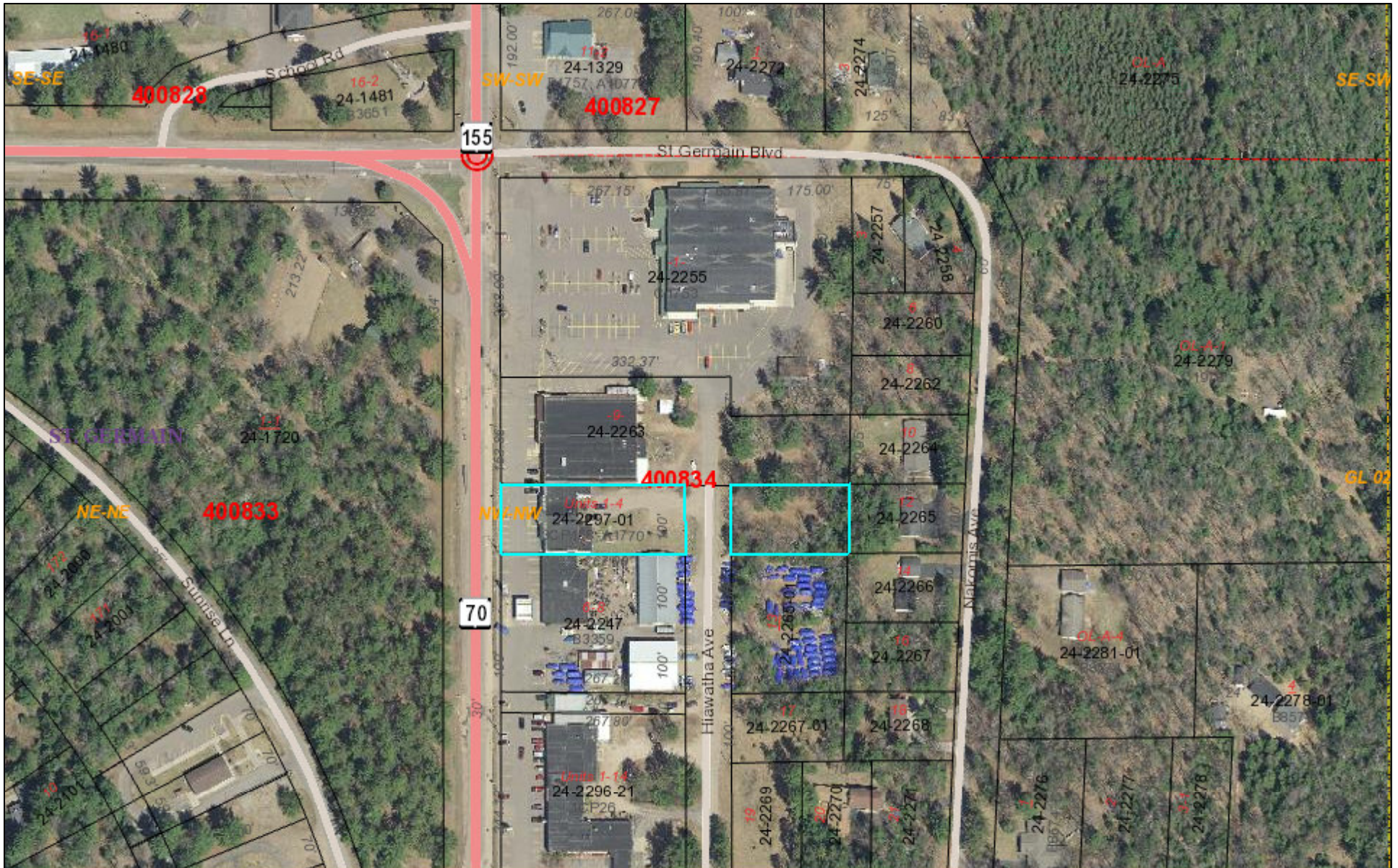
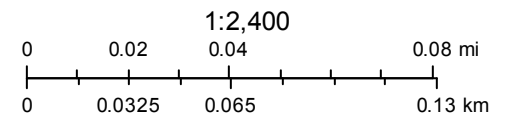


438 Hwy 70 - St. Germain



2/13/2020, 4:20:13 PM

Section Corners	Water Access	Highways	Major Roads	Minor Roads	Section Line
Section Corner	Boat Ramp	US/State Highway	Collector Road	Service Road	Section Line
Quarter Corner	Carry-In Lake Access	County Highway	Local Road	4WD Road	
			Resource Road	Runway	



Created by Vilas County Mapping Department