



For Sale & Lease

Manufacturing/ Warehouse Building

Doug Martin

Vice President
+1 603 493 8784
doug.martin@colliers.com



175 Canal Street, Suite 401
Manchester, NH 03101
+1 603 623 0100
colliersnh.com

673 Industrial Park Road Littleton, NH

Property Highlights

- Flexible industrial/manufacturing building available for sale or lease, conveniently located near I-93 and Route 302
- Situated in Littleton's active Industrial Park, home to 17+ businesses and more than 1,200 employees
- Versatile open layout featuring large column spacing and 4 loading docks to support a range of operations
- Equipped with a 1,200-amp, 480-volt, 3-phase electrical system, ideal for heavy manufacturing or warehousing needs
- Ample on-site parking and efficient site layout for truck access and maneuverability
- Just minutes from downtown Littleton, offering access to a variety of retail, dining, and business services

Information herein has been obtained from sources deemed reliable, however its accuracy cannot be guaranteed by Colliers International | New Hampshire & Maine. The user is required to conduct their own due diligence and verification. Colliers International | New Hampshire & Maine is independently owned and operated.

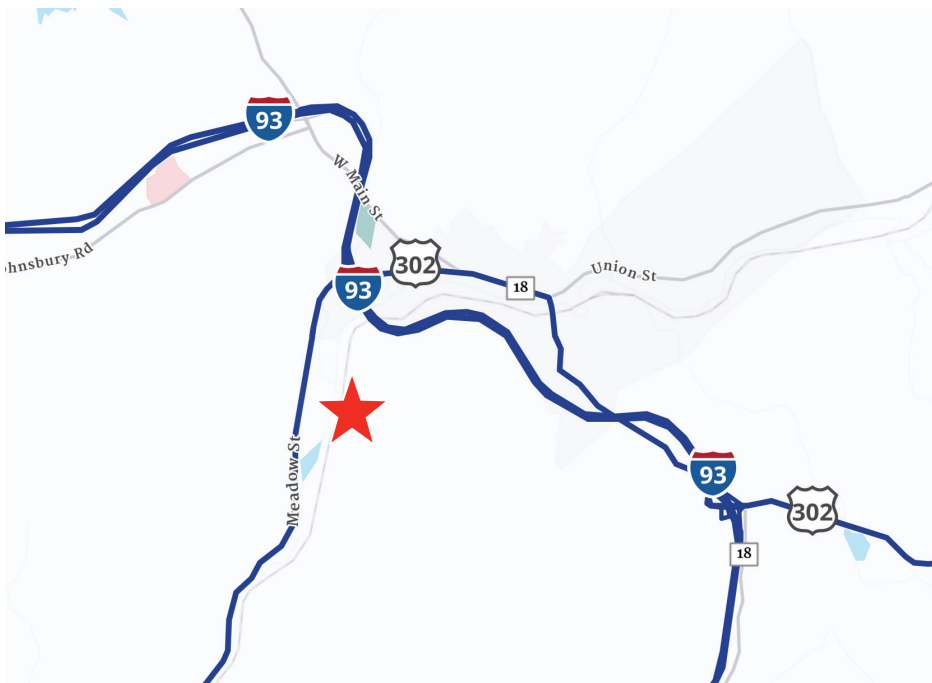
For Sale & Lease

Specifications

Address:	673 Industrial Park Road
Location:	Littleton, NH 03561
Building Type:	Industrial
Year Built:	1987
Total Building SF:	20,064±
Acreage:	4.1±
Floors:	1
Utilities:	Municipal water & sewer Propane
Zoning:	Industrial Zone District
Clear Height:	14'± to 19'±
Ceiling Height:	16'± to 21'±
Loading Docks:	4
Sprinklers:	Wet system
Power:	1200A; 480V; 3 phase
2024 NNN Expenses:	CAM: TBD Taxes: \$.81
Lease Rate:	\$9.95 NNN
List Price:	\$2,400,000 \$2,295,000

Single tenant building, remaining expenses TBD.

Locator Map



Contact us:

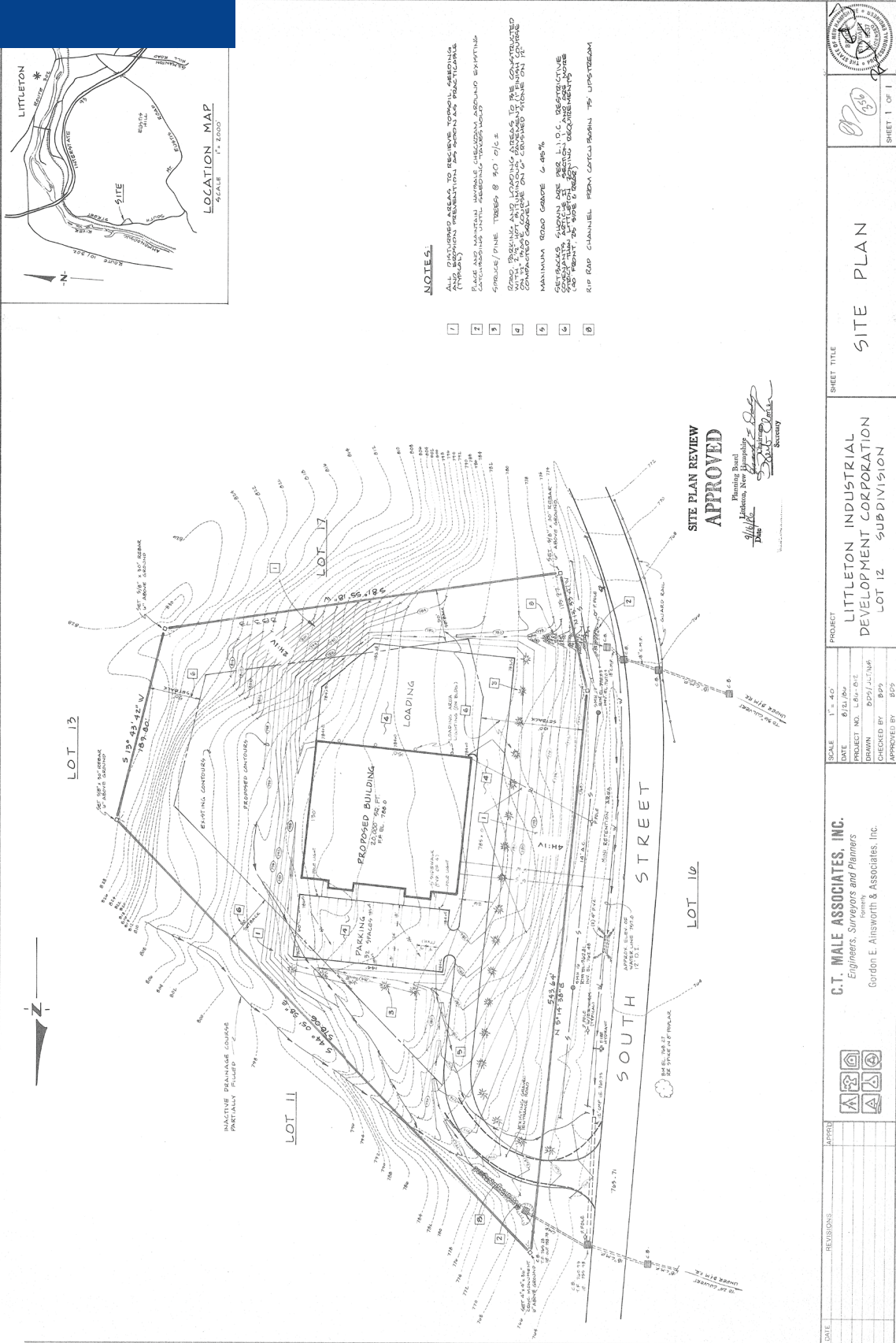
Doug Martin

Vice President
+1 603 493 8784
doug.martin@colliers.com



175 Canal Street, Suite 401
Manchester, NH 03101
+1 603 623 0100
colliersnh.com

Site Plan



NOTES:

- 1 ALL EXISTING UTILITIES TO REMAIN UNLESS OTHERWISE SHOWN AND EXCEPT WHERE SHOWN OTHERWISE, UTILITIES ARE TO BE DEPTHS AS SHOWN ON THE PLAN.
- 2 ALL EXISTING UTILITIES TO BE DEPTHS AS SHOWN ON THE PLAN.
- 3 EXISTING UTILITIES TO BE DEPTHS AS SHOWN ON THE PLAN.
- 4 EXISTING UTILITIES TO BE DEPTHS AS SHOWN ON THE PLAN.
- 5 EXISTING UTILITIES TO BE DEPTHS AS SHOWN ON THE PLAN.
- 6 EXISTING UTILITIES TO BE DEPTHS AS SHOWN ON THE PLAN.
- 7 EXISTING UTILITIES TO BE DEPTHS AS SHOWN ON THE PLAN.
- 8 EXISTING UTILITIES TO BE DEPTHS AS SHOWN ON THE PLAN.

**SITE PLAN REVIEW
APPROVED**

Planning Board
Littleton, New Hampshire
[Signature]
Secretary

DATE	REVISIONS	APPROVAL	PROJECT TITLE
			LITTLETON INDUSTRIAL DEVELOPMENT CORPORATION LOT 12 SUBDIVISION
SCALE 1" = 40'	PROJECT NO. 12-01	DATE 08/14/2014	SHEET 1 OF 1
DATE 08/14/2014	PROJECT NO. 12-01	DATE 08/14/2014	
DRAWN BY BPS/ALT/AR	CHECKED BY BPS	APPROVED BY BPS	
C.T. MALE ASSOCIATES, INC. Engineers, Surveyors and Planners Gordon E. Alsworth & Associates, Inc.			