



13 South Molton Street, Mayfair, W1

A1 Retail To Let



1,390 sq ft over ground, basement and first floors

LOCATION

South Molton Street is a prime pedestrianised street that connects Oxford Street to New Bond Street. The unit is 100m from Bond Street Underground Station (Central, Jubilee and soon to be Elizabeth line with Crossrail). The premises is situated in a busy trading position on the western side of the street adjacent to **Monika Vinader**. Other high quality retailers in the immediate vicinity include **Lipault, Maje, Hanro, Bimba y Lola, Sandro, Vertice** and **Claudie Pierlot**.

ACCOMMODATION

Ground, basement and first floor retail unit comprising the following approximate net internal floor areas:-

TERM

The premises are available by way of a new effectively full repairing and insuring lease for a term to be agreed.

RENT

£190,000 pax

BUSINESS RATES

Rateable Value £150,000

UBR 2019/20 0.524

Rates Payable 2019/20: £78,600

Interested parties are advised to make their own enquiries with the Local Authority.

EPC

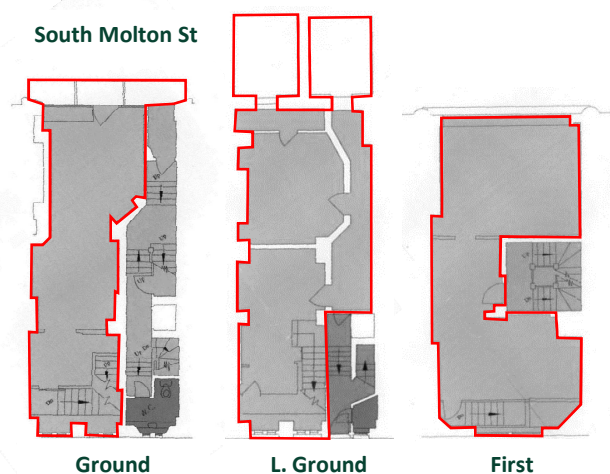
D (82)

SUBJECT TO CONTRACT

April 2019

	NIA (sq ft)	NIA (sq m)
Ground	374	34.7
Basement	368	34.2
First	478	44.4
Total	1,390	129.1

South Molton St



Ground

L. Ground

First

Further Information and Viewing Arrangements:

Theo Lewis
0207 4338 4228
Theodore.Lewis@bnpparibas.com

Beth Brading
0207 338 4362
beth.brading@bnpparibas.com

Freddie Strutt
0207 338 4174
freddie.strutt@bnpparibas.com