



MIRA
Buildings Group
ARCHITECTURAL SERVICES, INC.

Architect, Engineers, Planners,
Interior and Landscape Architects
1000 E. JEFFERSONVILLE ROAD
SUITE 200
FRIDLEY, MARYLAND 21051
410-482-2000
410-482-0700 Fax
www.mira.com

TRUCKER ENGINEERING INC.
1000 E. JEFFERSONVILLE ROAD
SUITE 200
FRIDLEY, MARYLAND 21051
410-482-2000
www.truckere.com

Drawn/Checked by
Brinkner Construction
14111 8th Street, NW
Washington, North Dakota 58801

Sax Offices

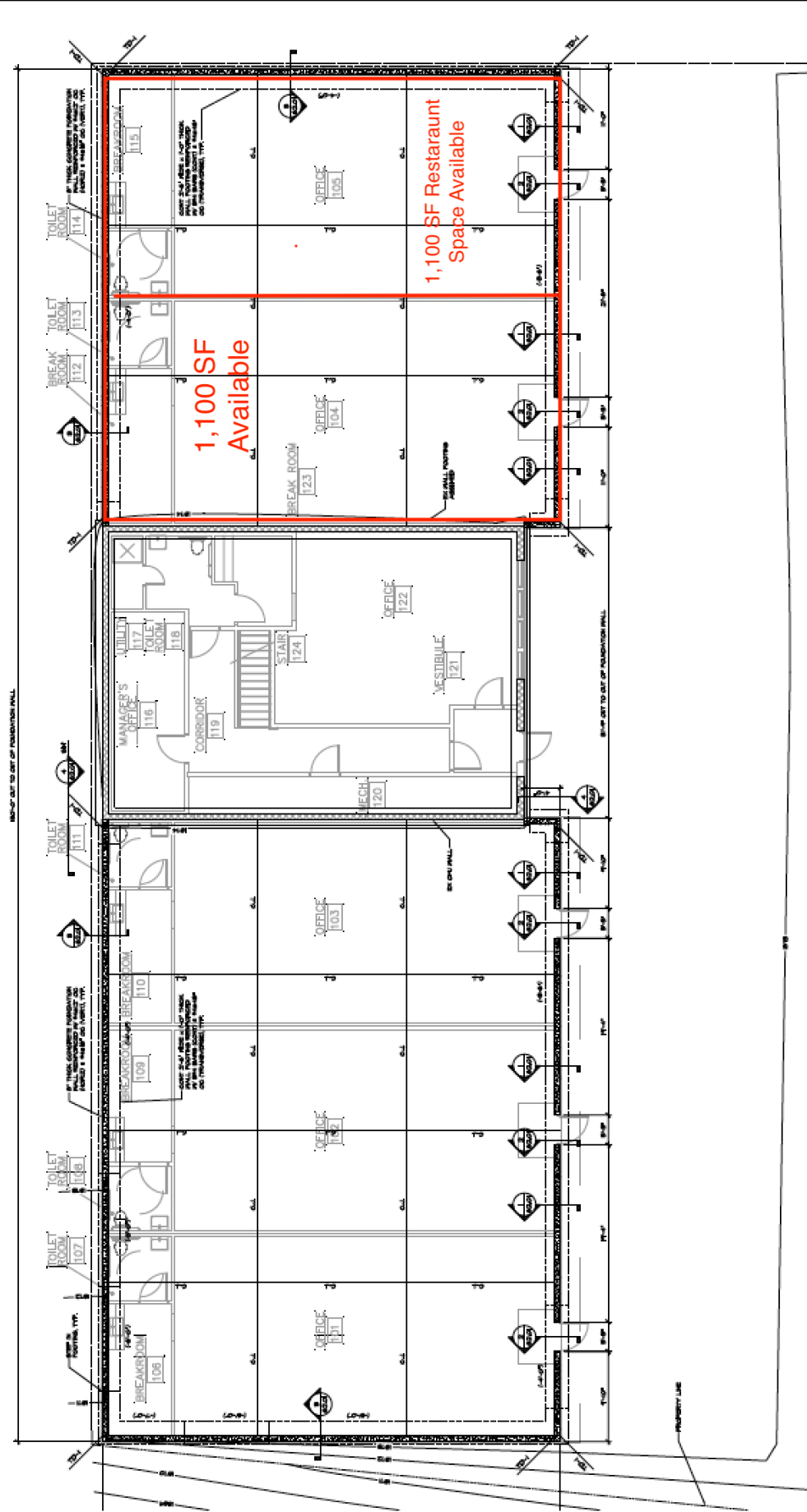
107 8th Avenue, West
Williams County
Washington, North Dakota 58801

NO.	REVISION	DATE
1	ISSUED FOR PERMIT	10/10/13
2	REVISED PER COMMENTS	10/10/13
3	REVISED PER COMMENTS	10/10/13
4	REVISED PER COMMENTS	10/10/13
5	REVISED PER COMMENTS	10/10/13
6	REVISED PER COMMENTS	10/10/13
7	REVISED PER COMMENTS	10/10/13
8	REVISED PER COMMENTS	10/10/13
9	REVISED PER COMMENTS	10/10/13
10	REVISED PER COMMENTS	10/10/13
11	REVISED PER COMMENTS	10/10/13
12	REVISED PER COMMENTS	10/10/13
13	REVISED PER COMMENTS	10/10/13
14	REVISED PER COMMENTS	10/10/13
15	REVISED PER COMMENTS	10/10/13
16	REVISED PER COMMENTS	10/10/13
17	REVISED PER COMMENTS	10/10/13
18	REVISED PER COMMENTS	10/10/13
19	REVISED PER COMMENTS	10/10/13
20	REVISED PER COMMENTS	10/10/13
21	REVISED PER COMMENTS	10/10/13
22	REVISED PER COMMENTS	10/10/13
23	REVISED PER COMMENTS	10/10/13
24	REVISED PER COMMENTS	10/10/13
25	REVISED PER COMMENTS	10/10/13
26	REVISED PER COMMENTS	10/10/13
27	REVISED PER COMMENTS	10/10/13
28	REVISED PER COMMENTS	10/10/13
29	REVISED PER COMMENTS	10/10/13
30	REVISED PER COMMENTS	10/10/13
31	REVISED PER COMMENTS	10/10/13
32	REVISED PER COMMENTS	10/10/13
33	REVISED PER COMMENTS	10/10/13
34	REVISED PER COMMENTS	10/10/13
35	REVISED PER COMMENTS	10/10/13
36	REVISED PER COMMENTS	10/10/13
37	REVISED PER COMMENTS	10/10/13
38	REVISED PER COMMENTS	10/10/13
39	REVISED PER COMMENTS	10/10/13
40	REVISED PER COMMENTS	10/10/13
41	REVISED PER COMMENTS	10/10/13
42	REVISED PER COMMENTS	10/10/13
43	REVISED PER COMMENTS	10/10/13
44	REVISED PER COMMENTS	10/10/13
45	REVISED PER COMMENTS	10/10/13
46	REVISED PER COMMENTS	10/10/13
47	REVISED PER COMMENTS	10/10/13
48	REVISED PER COMMENTS	10/10/13
49	REVISED PER COMMENTS	10/10/13
50	REVISED PER COMMENTS	10/10/13
51	REVISED PER COMMENTS	10/10/13
52	REVISED PER COMMENTS	10/10/13
53	REVISED PER COMMENTS	10/10/13
54	REVISED PER COMMENTS	10/10/13
55	REVISED PER COMMENTS	10/10/13
56	REVISED PER COMMENTS	10/10/13
57	REVISED PER COMMENTS	10/10/13
58	REVISED PER COMMENTS	10/10/13
59	REVISED PER COMMENTS	10/10/13
60	REVISED PER COMMENTS	10/10/13
61	REVISED PER COMMENTS	10/10/13
62	REVISED PER COMMENTS	10/10/13
63	REVISED PER COMMENTS	10/10/13
64	REVISED PER COMMENTS	10/10/13
65	REVISED PER COMMENTS	10/10/13
66	REVISED PER COMMENTS	10/10/13
67	REVISED PER COMMENTS	10/10/13
68	REVISED PER COMMENTS	10/10/13
69	REVISED PER COMMENTS	10/10/13
70	REVISED PER COMMENTS	10/10/13
71	REVISED PER COMMENTS	10/10/13
72	REVISED PER COMMENTS	10/10/13
73	REVISED PER COMMENTS	10/10/13
74	REVISED PER COMMENTS	10/10/13
75	REVISED PER COMMENTS	10/10/13
76	REVISED PER COMMENTS	10/10/13
77	REVISED PER COMMENTS	10/10/13
78	REVISED PER COMMENTS	10/10/13
79	REVISED PER COMMENTS	10/10/13
80	REVISED PER COMMENTS	10/10/13
81	REVISED PER COMMENTS	10/10/13
82	REVISED PER COMMENTS	10/10/13
83	REVISED PER COMMENTS	10/10/13
84	REVISED PER COMMENTS	10/10/13
85	REVISED PER COMMENTS	10/10/13
86	REVISED PER COMMENTS	10/10/13
87	REVISED PER COMMENTS	10/10/13
88	REVISED PER COMMENTS	10/10/13
89	REVISED PER COMMENTS	10/10/13
90	REVISED PER COMMENTS	10/10/13
91	REVISED PER COMMENTS	10/10/13
92	REVISED PER COMMENTS	10/10/13
93	REVISED PER COMMENTS	10/10/13
94	REVISED PER COMMENTS	10/10/13
95	REVISED PER COMMENTS	10/10/13
96	REVISED PER COMMENTS	10/10/13
97	REVISED PER COMMENTS	10/10/13
98	REVISED PER COMMENTS	10/10/13
99	REVISED PER COMMENTS	10/10/13
100	REVISED PER COMMENTS	10/10/13

Foundation Plan

Sheet No. 60.01

Construction Documents



FOUNDATION 4 SLAB ON GRADE PLAN
SCALE: 1/4" = 1'-0"

- FOUNDATION AND SLAB ON GRADE NOTES:
1. GENERAL: ALL WORK SHALL BE IN ACCORDANCE WITH THE LATEST EDITIONS OF THE INTERNATIONAL BUILDING CODE (IBC) AND THE INTERNATIONAL RESIDENTIAL CODE (IRC), UNLESS OTHERWISE SPECIFIED.
 2. ALL FOUNDATION WALLS SHALL BE CONCRETE ON GRADE WITH A MINIMUM OF 12" THICKNESS AND 4" REINFORCING BARS AT 12" ON CENTER.
 3. ALL FOUNDATION WALLS SHALL BE FINISHED WITH INTERIOR FINISHES.
 4. ALL FOUNDATION WALLS SHALL BE FINISHED WITH EXTERIOR FINISHES.
 5. ALL FOUNDATION WALLS SHALL BE FINISHED WITH INTERIOR FINISHES.
 6. ALL FOUNDATION WALLS SHALL BE FINISHED WITH EXTERIOR FINISHES.
 7. ALL FOUNDATION WALLS SHALL BE FINISHED WITH INTERIOR FINISHES.
 8. ALL FOUNDATION WALLS SHALL BE FINISHED WITH EXTERIOR FINISHES.
 9. ALL FOUNDATION WALLS SHALL BE FINISHED WITH INTERIOR FINISHES.
 10. ALL FOUNDATION WALLS SHALL BE FINISHED WITH EXTERIOR FINISHES.
 11. ALL FOUNDATION WALLS SHALL BE FINISHED WITH INTERIOR FINISHES.
 12. ALL FOUNDATION WALLS SHALL BE FINISHED WITH EXTERIOR FINISHES.
 13. ALL FOUNDATION WALLS SHALL BE FINISHED WITH INTERIOR FINISHES.
 14. ALL FOUNDATION WALLS SHALL BE FINISHED WITH EXTERIOR FINISHES.
 15. ALL FOUNDATION WALLS SHALL BE FINISHED WITH INTERIOR FINISHES.
 16. ALL FOUNDATION WALLS SHALL BE FINISHED WITH EXTERIOR FINISHES.
 17. ALL FOUNDATION WALLS SHALL BE FINISHED WITH INTERIOR FINISHES.
 18. ALL FOUNDATION WALLS SHALL BE FINISHED WITH EXTERIOR FINISHES.
 19. ALL FOUNDATION WALLS SHALL BE FINISHED WITH INTERIOR FINISHES.
 20. ALL FOUNDATION WALLS SHALL BE FINISHED WITH EXTERIOR FINISHES.