

FOR LEASE

# Bowie Commons

7014 CITY CENTER WAY, FAIRVIEW, TENNESSEE 37062

RETAIL



## NOW AVAILABLE

- + Prime 79,316 SF Publix anchored Shopping Center
- + Strategically located on Highway 100 with convenient access to Highway 96 to the East and I-840 to the West
- + 13,613 CPD on Highway 100 (Fairview Blvd)
- + SF Minimum: 1,836 SF
- + Max Contiguous: 10,828 SF
- + Outparcel A: \$325,000
- + Outparcel D: \$675,000



## DEMOGRAPHICS

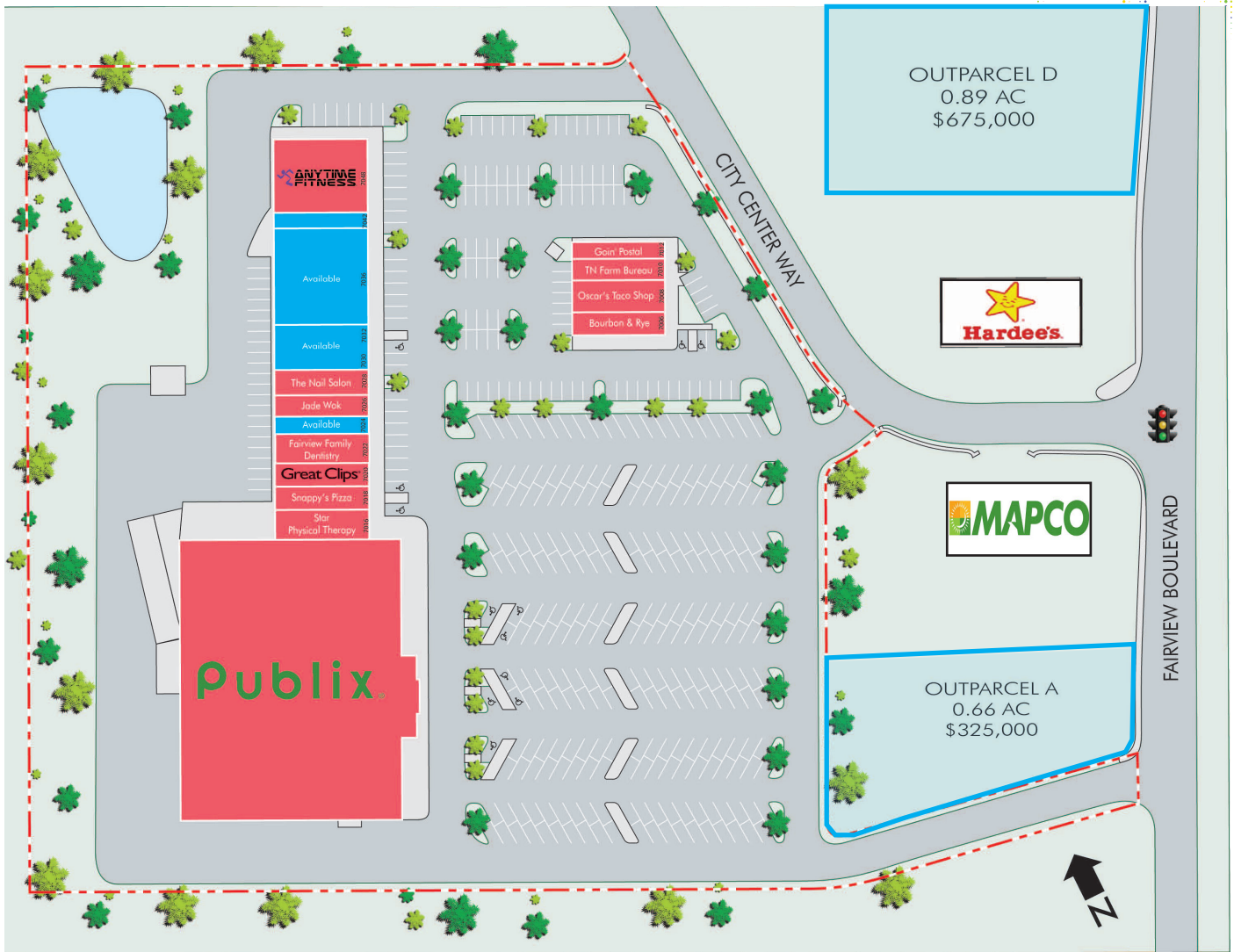
	3 MILE RADIUS	5 MILE RADIUS	7 MILE RADIUS
2017 Population	9,463	12,438	17,835
2017 Households	3,376	4,530	6,552
2017 Average HH Income	\$75,664	\$75,273	\$76,230

FOR LEASE

# Bowie Commons

7014 CITY CENTER WAY, FAIRVIEW, TENNESSEE 37062

RETAIL



## TENANTS

SUITE	TENANT	SF	SUITE	TENANT	SF	SUITE	TENANT	SF
ANCHOR	Publix	45,600	7018	Snappy Pizza	1,600	7032	AVAILABLE	1,600
7006	Bourbon & Rye	1,631	7020	Great Clips	1,200	7036	AVAILABLE	6,451
7008	Oscar's Tacos	2,129	7022	Fairview Family Dentistry	1,982	7042	AVAILABLE	1,164
7010	Farm Bureau Insurance	1,310	7024	AVAILABLE	1,836	7048	Anytime Fitness	5,263
7012	Goin Postal	1,329	7026	Jade Wok	1,400	+	Outparcel A	0.66 AC
7016	Star Physical Therapy	1,608	7028	The Nail Salon	1,600	+	Outparcel D	0.89 AC
7018	Snappy Pizza	1,600	7030	AVAILABLE	1,600			

## CONTACT US

### CRYSTAL DAVIS

+1 615 248 1835  
crystal.davis@cbre.com

© 2018 CBRE, Inc. All rights reserved. This information has been obtained from sources believed reliable, but has not been verified for accuracy or completeness. You should conduct a careful, independent investigation of the property and verify all information. Any reliance on this information is solely at your own risk. CBRE and the CBRE logo are service marks of CBRE, Inc. All other marks displayed on this document are the property of their respective owners. Photos herein are the property of their respective owners. Use of these images without the express written consent of the owner is prohibited.

