

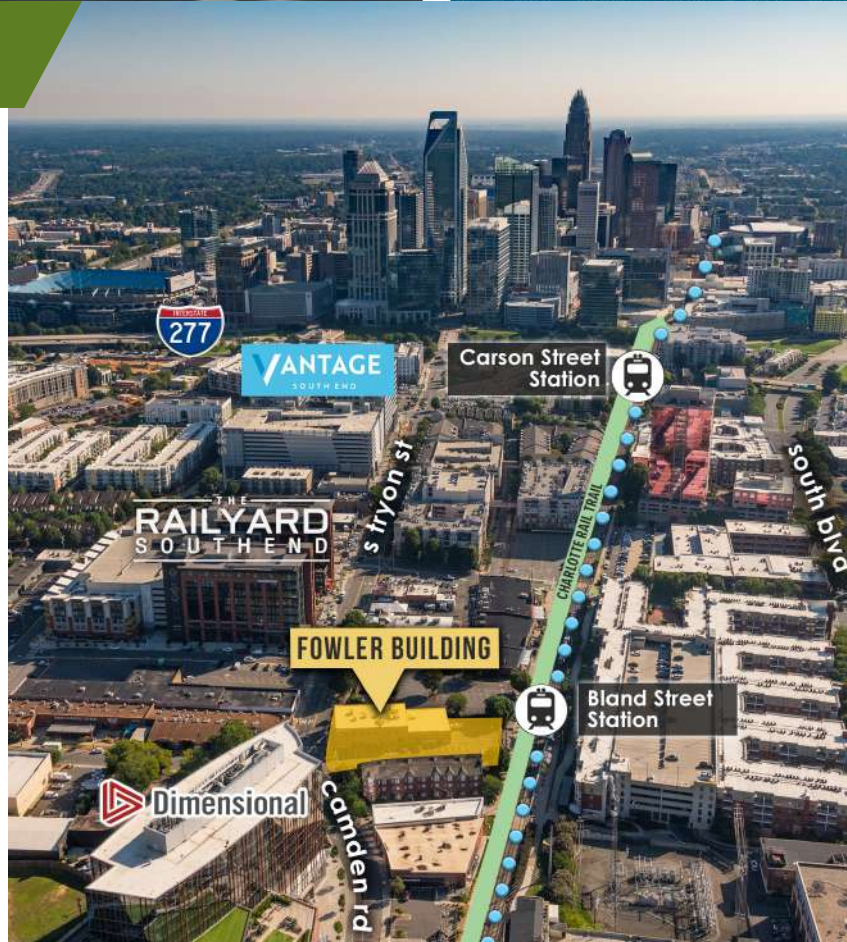


# THE FOWLER BUILDING

1447 S TRYON STREET  
SUITE 100  
CHARLOTTE, NC 28203

## ±5,073 SF OFFICE FOR LEASE

- Move-in ready creative open space located in South End, Charlotte
- A premier three-story historic building; built in 1928
- Located directly on the Bland Street light rail station
- Free surface parking
- Excellent visibility at the prominent intersection of Camden Road and South Tryon Street
- Exposed bricks, beams, original windows with modern finishes
- Less than 5 minutes from I-77, I-277 and Charlotte CBD

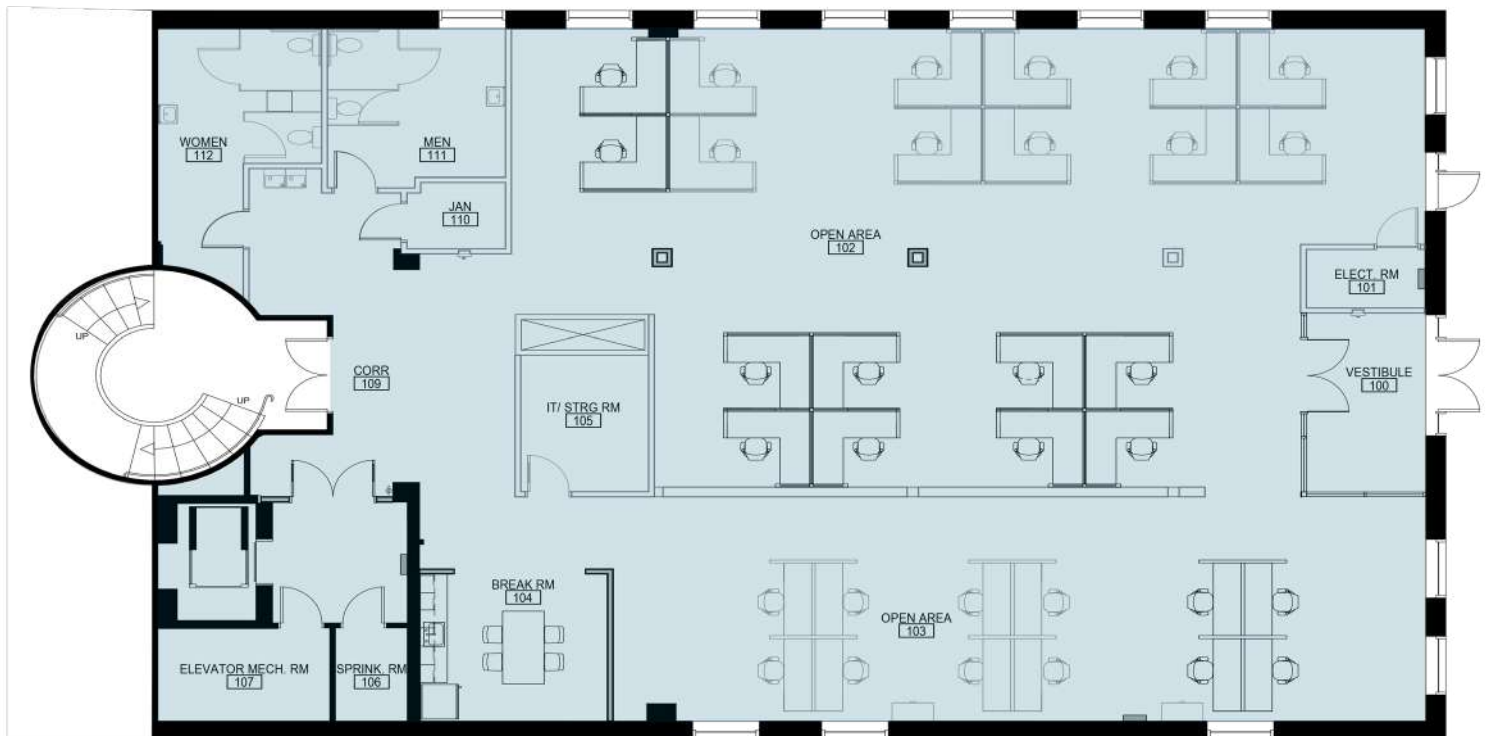


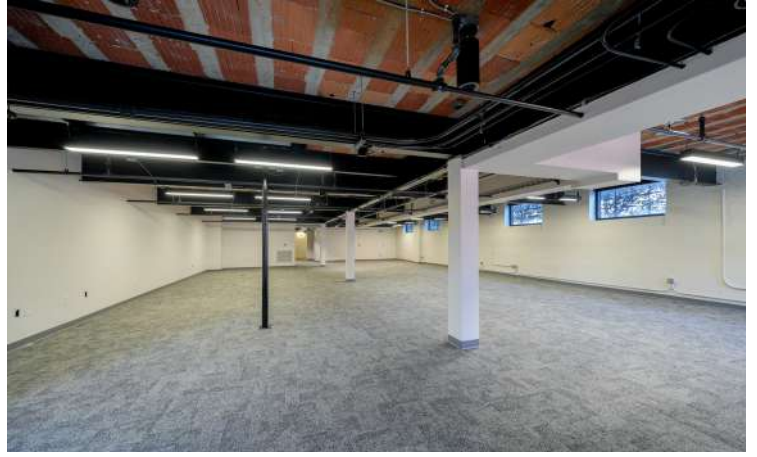
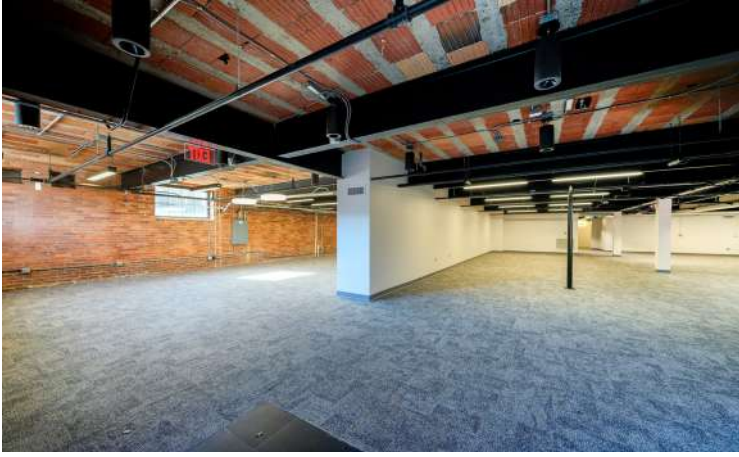


# THE FOWLER BUILDING

1447 S TRYON STREET  
SUITE 100  
CHARLOTTE, NC 28203

SUITE 100: ±5,073 SF





# THE FOWLER BUILDING

1447 S TRYON STREET  
SUITE 100  
CHARLOTTE, NC 28203



Beacon Partners is a commercial real estate firm specializing in the development, acquisition, and operation of industrial, office and mixed-use properties. Beacon leases, owns or manages more than 17.5+ million square feet of space throughout the Carolinas.