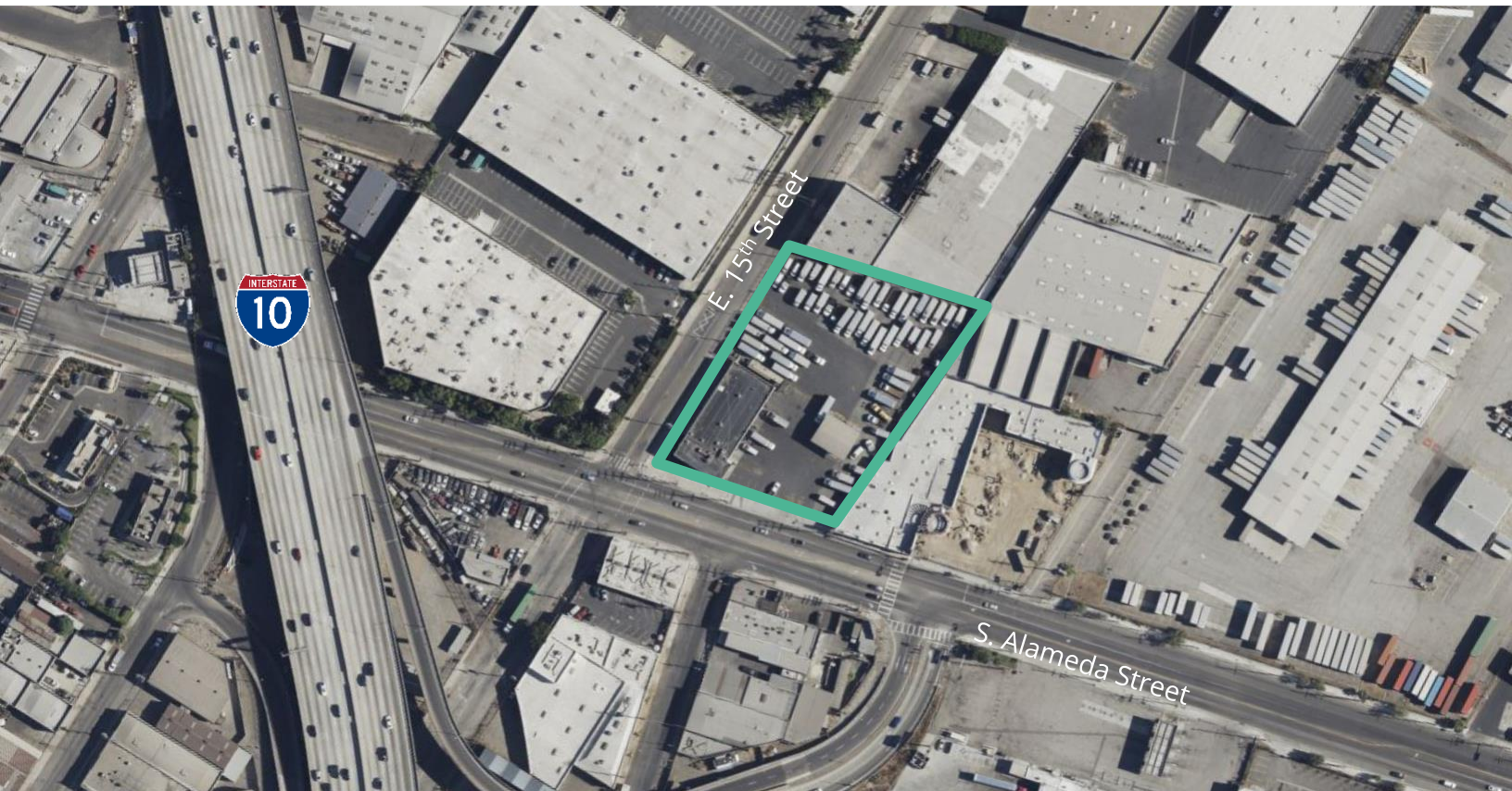


Truck Terminal/Maintenance Yard For Lease

1508 S. Alameda Street
Los Angeles, CA 90021



This 1.62-acre corner property provides a rare opportunity to lease a truck terminal/maintenance yard near Downtown Los Angeles. The property features a \pm 7,676 square foot warehouse building (with \pm 1,500 SF of office space), 8 total drive in doors (4 on each side) drive-through capable, plus additional open drive through area, fuel pumps and abundant parking. Located in highly sought-after logistical area immediately off the 10 Freeway at Alameda Street, this property provides convenient access to/from the 110, 101 60 and 5 freeways.

Land Size:	\pm 1.62 acres (\pm 70,567 SF)
Building Size:	\pm 7,676 SF (\pm 1,500 SF office)
Drive-In Doors:	8 total drive in doors (4 on each side), drive-through capable, plus additional open drive through area.
Lease Rate:	Negotiable
Lease Term:	Negotiable
Notes:	Low coverage, corner location opportunity near Downtown Los Angeles with powered auto charging on site

Get more information

Eric Moore

Principal

D 213 935 7438

M 310 625 7407

CalDRE #00889228

eric.moore@avisonyoung.com

Christopher Bonbright

Principal, Managing Director

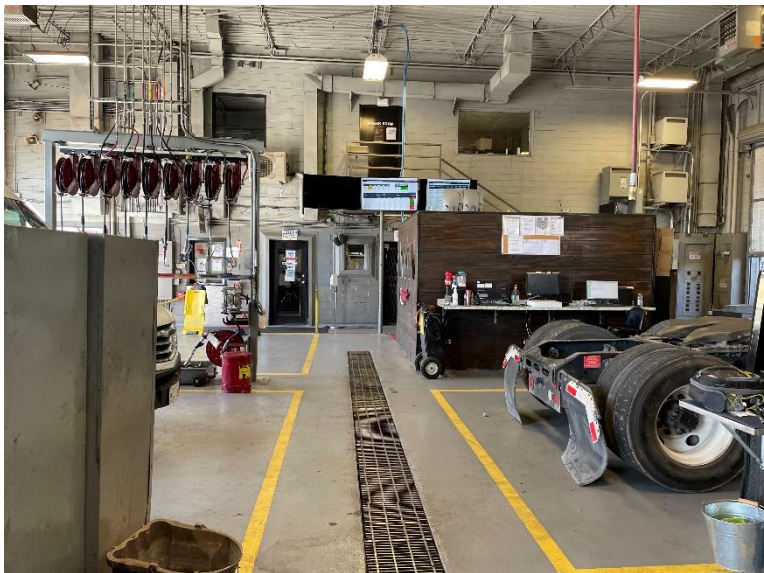
D 323 603 5045

CalDRE #00823957

chris.bonbright@avisonyoung.com

Truck Terminal/Maintenance Yard For Lease

1508 S. Alameda Street
Los Angeles, CA 90021

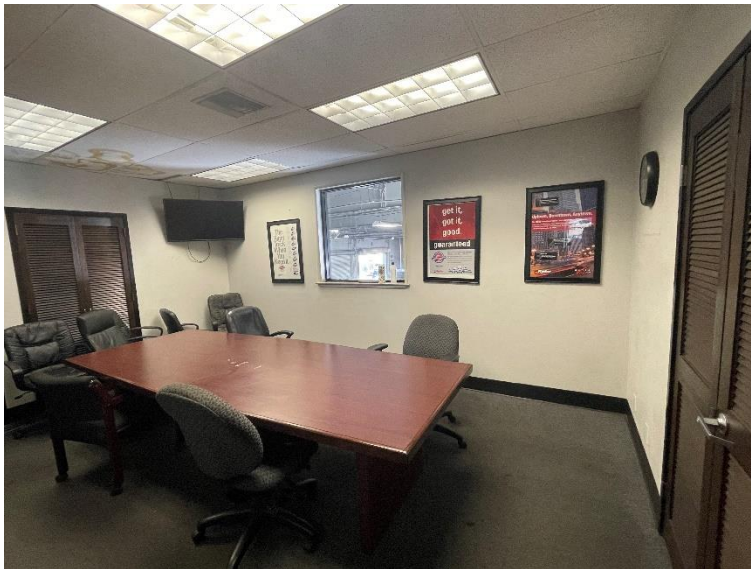


Eric Moore
Principal
D 213 935 7438
CaDRE #00889228
eric.moore@avisonyoung.com

Christopher Bonbright
Principal, Managing Director
D 323 603 5045
CaDRE #00823957
chris.bonbright@avisonyoung.com

Truck Terminal/Maintenance Yard For Lease

1508 S. Alameda Street
Los Angeles, CA 90021



Eric Moore
Principal
D 213 935 7438
CaIDRE #00889228
eric.moore@avisonyoung.com

Christopher Bonbright
Principal, Managing Director
D 323 603 5045
CaIDRE #00823957
chris.bonbright@avisonyoung.com

Truck Terminal/Maintenance Yard For Lease

1508 S. Alameda Street
Los Angeles, CA 90021



Eric Moore
Principal
D 213 935 7438
CaIDRE #00889228
eric.moore@avisonyoung.com

Christopher Bonbright
Principal, Managing Director
D 323 603 5045
CaIDRE #00823957
chris.bonbright@avisonyoung.com

Truck Terminal/Maintenance Yard For Lease

1508 S. Alameda Street
Los Angeles, CA 90021



Eric Moore
Principal
D 213 935 7438
Ca/DRE #00889228
eric.moore@avisonyoung.com

Christopher Bonbright
Principal, Managing Director
D 323 603 5045
Ca/DRE #00823957
chris.bonbright@avisonyoung.com