



2075 Pioneer

2075 S. PIONEER RD., SUITE A
SALT LAKE CITY, UT 84104

For Lease
\$8,100/Month Including Utilities

Property Highlights

- 6,500 SF warehouse amenities
- 1,700 SF office - Freeway frontage
- 7,000 SF yard - Available immediately
- One ground level door: 18'x16'
- Clear height: 28'
- 480+ volt
- Yard space available
- Excellent location
- Immediate access to SR-201 and I-215
- Many surrounding

For information, please contact:

Jackie Kingston

Associate Director

t 801-578-5558

jackie.kingston@nmrk.com

nmrk.com

NEWMARK

The information contained herein has been obtained from sources deemed reliable but has not been verified and no guarantee, warranty or representation, either express or implied, is made with respect to such information. Terms of sale or lease and availability are subject to change or withdrawal without notice.

SUITE A



For information, please contact:

Jackie Kingston

Associate Director

t 801-578-5558

jackie.kingston@nrmk.com

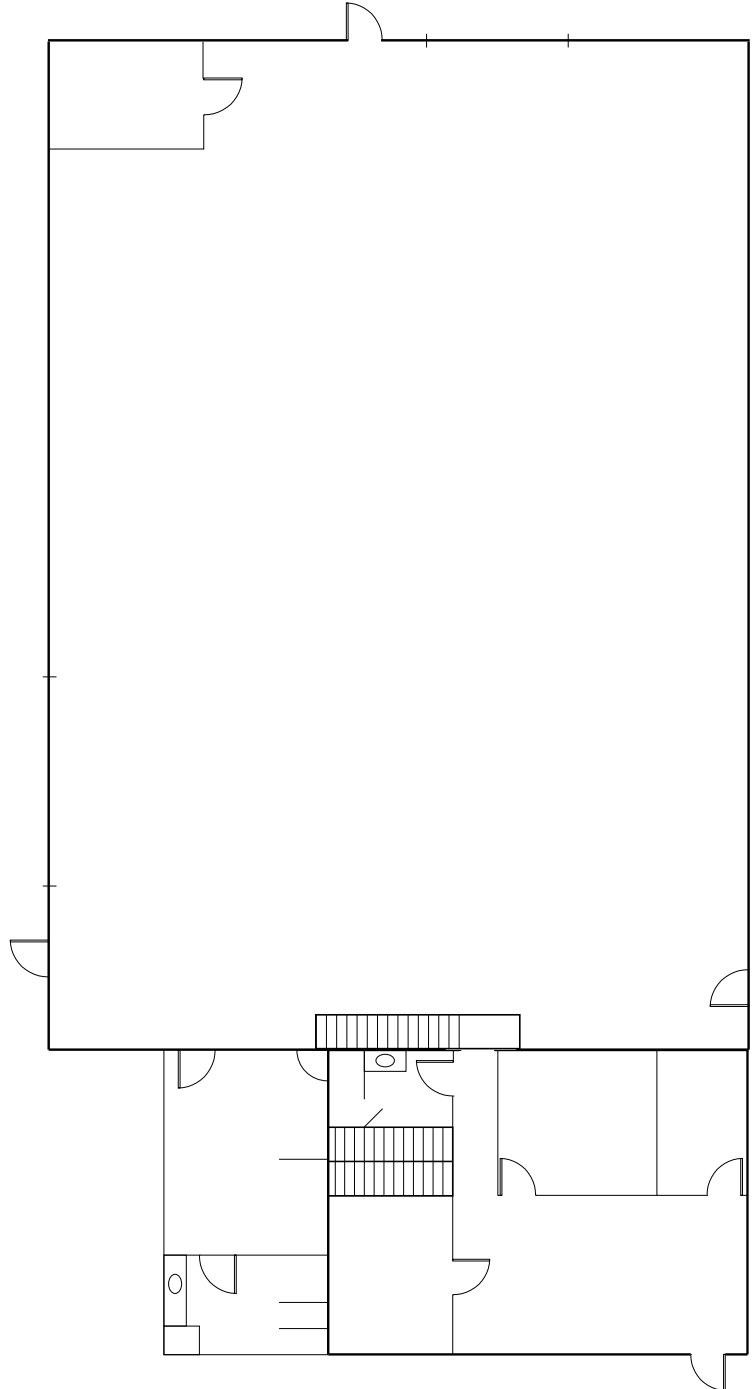
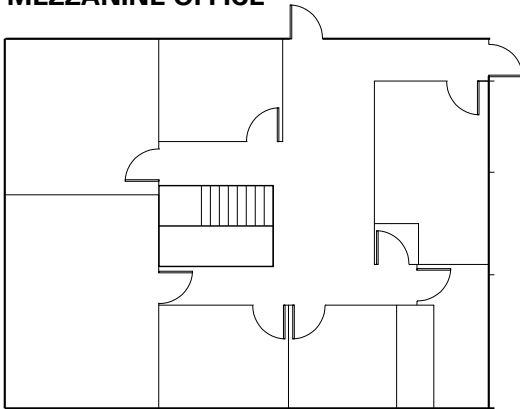
nrmk.com

NEWMARK

The information contained herein has been obtained from sources deemed reliable but has not been verified and no guarantee, warranty or representation, either express or implied, is made with respect to such information. Terms of sale or lease and availability are subject to change or withdrawal without notice.

SUITE A (WEST)

MEZZANINE OFFICE



For information, please contact:

Jackie Kingston

Associate Director

t 801-578-5558

jackie.kingston@nmrk.com

nmrk.com

NEWMARK

The information contained herein has been obtained from sources deemed reliable but has not been verified and no guarantee, warranty or representation, either express or implied, is made with respect to such information. Terms of sale or lease and availability are subject to change or withdrawal without notice.



For information, please contact:

Jackie Kingston

Associate Director

t 801-578-5558

jackie.kingston@nmrk.com

nmrk.com

NEWMARK

The information contained herein has been obtained from sources deemed reliable but has not been verified and no guarantee, warranty or representation, either express or implied, is made with respect to such information. Terms of sale or lease and availability are subject to change or withdrawal without notice.



For information, please contact:

Jackie Kingston

Associate Director

t 801-578-5558

jackie.kingston@nmrk.com

nmrk.com

NEWMARK

The information contained herein has been obtained from sources deemed reliable but has not been verified and no guarantee, warranty or representation, either express or implied, is made with respect to such information. Terms of sale or lease and availability are subject to change or withdrawal without notice.