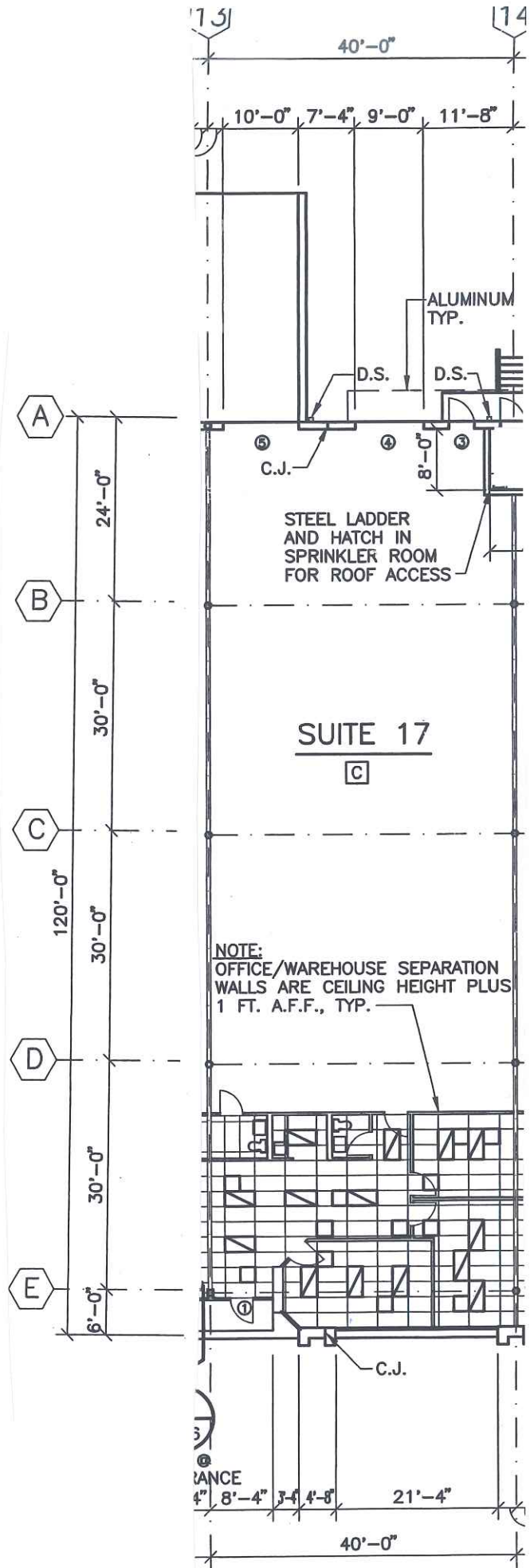


FLOOR PLAN- Architectural

1165 Allgood Road
 Suite 17
 Marietta, Georgia 30062

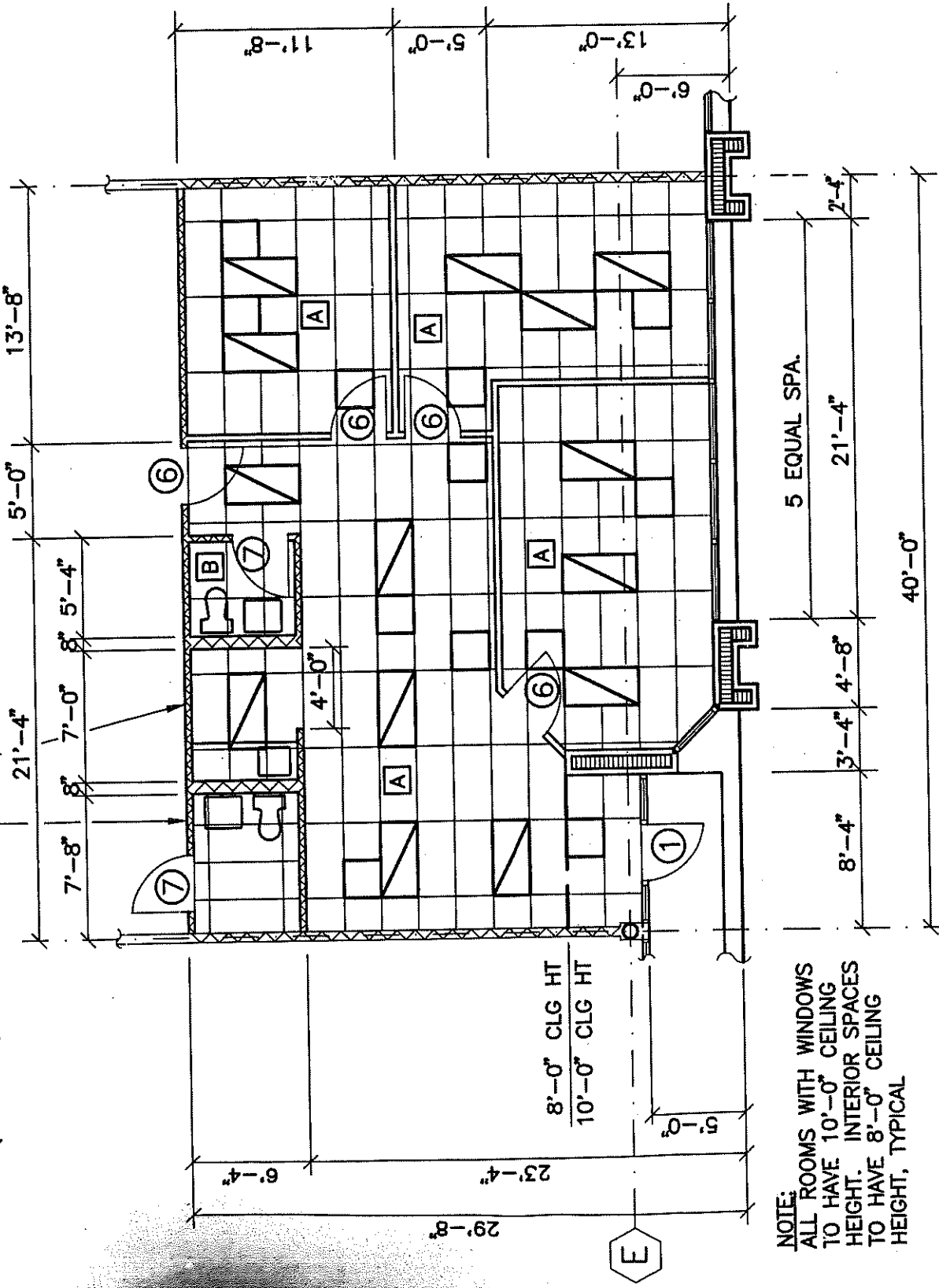
Off 1,185 S.F.
 Whs 3,605 S.F.
 Tot 4,790 S.F.

Scaled Drawing



8'-0" & 10'-0" (VARIES W/CEILING HEIGHT)

12



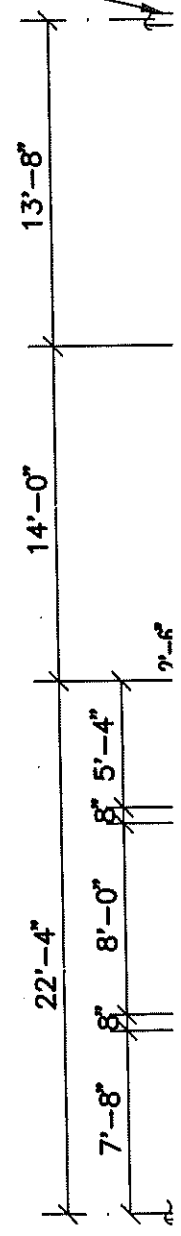
8'-0" CLG HT
10'-0" CLG HT

NOTE:
ALL ROOMS WITH WINDOWS
TO HAVE 10'-0" CEILING
HEIGHT. INTERIOR SPACES
TO HAVE 8'-0" CEILING
HEIGHT, TYPICAL

SUITE 17

SUITES 16, 18 O.H.

1-HOUR FIRE RATED GYP. B.
WITH STD. 6" STUDS @ 16"
(TYPICAL), FIRE DESIGN TEST
6" BATT INSULATION @ WALL
BETWEEN OFFICES, TYP.
R = 19.0



5 EQUAL SPA.
21'-4"

4'-8"

3'-4"

8'-4"

40'-0"

2'-8"

13'-8"

14'-0"

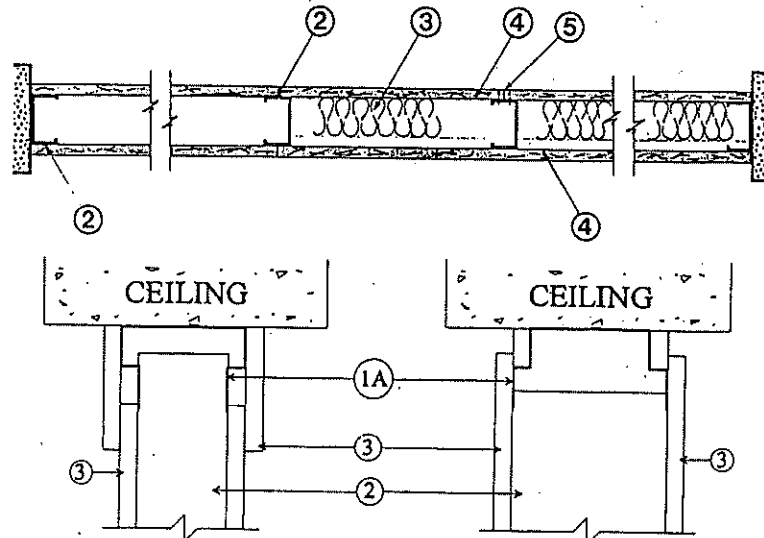
7'-8"

8'-0"

5'-4"

7'-8"

Design No. U465
Nonbearing Wall Rating—1 HR.



1. Floor and Ceiling Runners—(not shown)—Channel shaped runners, 3-5/8 in. wide (min), 1-1/4 in. legs, formed from No. 25 MSG (min) galv steel, attached to floor and ceiling with fasteners spaced 24 in. OC max.
- 1A. As an alternate to Item 1 Ceiling Runner*—25 MSG min galv steel width to accommodate stud, with 3 or 4 in. legs offset at midpoint 5/8 in. to accommodate wall cladding thickness. Attached to ceiling with fasteners spaced 24 in. OC. The wall cladding shall overlap wallboard 1-1/4 in. min.
Fire Trak Corp.
2. Steel Studs—Channel shaped, 3-5/8 in. wide (min), 1-1/4 in. legs, 3/8 in. folded back returns, formed from No. 25 MSG (min) galv steel spaced 24 in. OC max.
3. Batts and Blankets*—(Optional)—Mineral wool or glass fiber batts partially or completely filling stud cavity.
See Batts and Blankets (BZJZ) category for names of Classified companies.
4. Wallboard, Gypsum*—5/8 in. thick, 4 ft wide, attached to steel studs and floor and ceiling track with 1 in. long, Type S self-tapping steel screws spaced 8 in. OC, along edges of board and 12 in. OC in the field of the board. Joints oriented vertically and staggered on opposite sides of the assembly. When attached to item 6 (furring channels), wallboard is screw attached to furring channels with 1 in. long, type S steel screws spaced 12 in. OC.
Boral Gypsum Inc.—Type BG-C.
Canadian Gypsum Co., Ltd.—Types C, SCX, SHX, WRX.
Domtar Gypsum Inc.—Type 5 or C.
Eagle-Gypsum Products—Type EG-C.
Georgia-Pacific Corp., Gypsum Div.—Type GPFS-6 or GPFS-C.
National Gypsum Co.—Types FSK-G, FSW-G.
Pabco Gypsum Co.—Type PG-C.

Republic Gypsum Co.—Type RG-C.
Standard Gypsum Corp.—Type SG-C.
Temple-Inland Forest Products Corp.—Type TP-5.
United States Gypsum Co.—Type AR, C, IP-X2, SCX, SHX, WRC or WRX.
Westroc Industries Ltd.—Type Westroc Fireboard.
- 4A. Wallboard, Gypsum*—(As an alternate to Item 4)—Nom 3/4 in. thick, 4 ft wide, installed as described in Item 4 with screw length increased to 1-1/4 in.
United States Gypsum Co.—Type AR.
- 4B. Wallboard, Gypsum*—(As an alternate to Items 4 and 4A)—5/8 in. thick installed as described in Item 4. Joint covering (Item 5) not required.
United States Gypsum Co.—Weatherock.
5. Joint Tape and Compound—Vinyl, dry or premixed joint compound, applied in two coats to joints and screw heads; paper tape, 2 in. wide, embedded in first layer of compound over all joints. As an alternate, nominal 3/32 in. thick gypsum veneer plaster may be applied to the entire surface of Classified veneer baseboard. Joints reinforced.
6. Furring Channel—(Optional-Not Shown)—Resilient 25 MSG galv steel furring channels spaced vertically max 24 in. OC, flange portion attached to each intersecting stud with 1/2 in. long type S-12 pan-head steel screws.

*Bearing the UL Classification Marking