

# 396 | AVENUE OF THE AMERICAS

ICONIC CORNER OF GREENWICH VILLAGE AT SIXTH AVE & W 8TH ST



For more information contact:

**Joanne Podell** | 212 841 5972 | [joanne.podell@cushwake.com](mailto:joanne.podell@cushwake.com)

**Mary Clayton** | 212 841 7650 | [mary.clayton@cushwake.com](mailto:mary.clayton@cushwake.com)

A commission computed and earned in accordance with the rates and conditions of our agency agreement with our principal, when received from our principal, will be paid to a cooperating broker who consummates a sublease which is unconditionally executed and delivered by and between sublandlord and subtenant. (A copy of the rates and conditions referred to above are available upon request.) The depiction in the above photograph of any person, entity, sign, logo or property (other than Cushman & Wakefield's client and the property offered by Cushman & Wakefield) is incidental only, and is not intended to connote any affiliation, connection, association, sponsorship or approval by or between that which is incidentally depicted by Cushman & Wakefield or its client.



# 396 | AVENUE OF THE AMERICAS

## RETAIL SPACE

---

Ground Level	3,640 SF
Second Level	3,640 SF
Lower Level	3,640 SF

**Total 10,920 SF**

## FRONTAGE

---

Over 125' of wraparound frontage

## POSSESSION

---

Immediate

## KEY COMMENTS

---

- Iconic corner at the epicenter of Greenwich Village
- Tremendous branding opportunity - excellent visibility
- Close proximity to the 1, 2, A, C, E, B, D, F, M subway lines
  - Over 17 Million annual passengers

## NEIGHBORS

---

Starbucks, Duane Reade, Bank of America, Staples, Citibank, Chipotle, The Vitamin Shoppe

For more information contact:

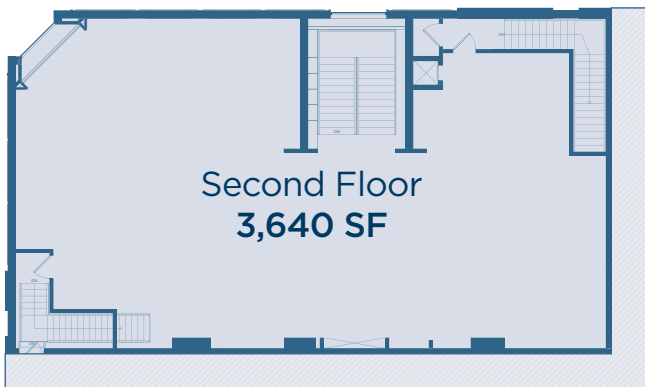
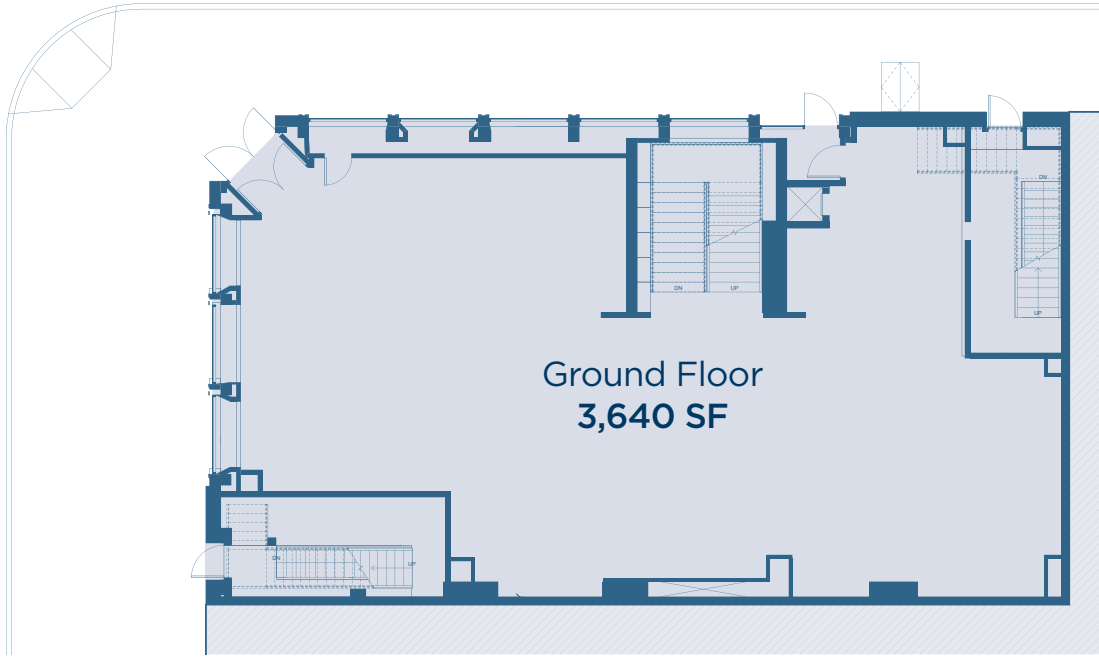
**Joanne Podell** | 212 841 5972 | [joanne.podell@cushwake.com](mailto:joanne.podell@cushwake.com)  
**Mary Clayton** | 212 841 7650 | [mary.clayton@cushwake.com](mailto:mary.clayton@cushwake.com)



# 396 | AVENUE OF THE AMERICAS

WEST 8TH STREET

SIXTH AVENUE



For more information contact:

**Joanne Podell** | 212 841 5972 | [joanne.podell@cushwake.com](mailto:joanne.podell@cushwake.com)

**Mary Clayton** | 212 841 7650 | [mary.clayton@cushwake.com](mailto:mary.clayton@cushwake.com)



Lenny's Pizza  
Bigelow Pharmacy  
Lifethyme Natural Market  
Dunkin Donuts  
Blue Mercury  
Liquor

**396** AVENUE OF THE AMERICAS

Sprint  
Chipotle  
International News  
Citibank  
Onegin  
Petland  
Vada Spa  
Waverly Restaurant

Waverly Wines & Liquors  
99 Cent Pizza  
Staples  
Bank of America ATM  
Grab & Go  
Potatopia  
Starbucks  
Duane Reade

The Vitamin Shoppe  
Taj Jewelry  
Nail Salon  
St Joseph's Church

Urban Outfitters  
Radioshack  
CVS

ACE  
BDFM

— WASHINGTON PL —  
HSBC  
Chase

Joy Burger  
Teatulia  
Looks Nails  
Tri-Rite Deli  
Village Bazaar  
GameStop  
Capital One

Papaya Dog  
James Leonard Opticians

Golden Swan Garden  
West 4th Basketball Courts

IFC Film Center  
2 Bros Pizza  
GNC

Minetta Playground

Spa Belles

MINETTA LANE

For more information contact:

**Joanne Podell** | 212 841 5972 | joanne.podell@cushwake.com

**Mary Clayton** | 212 841 7650 | mary.clayton@cushwake.com

