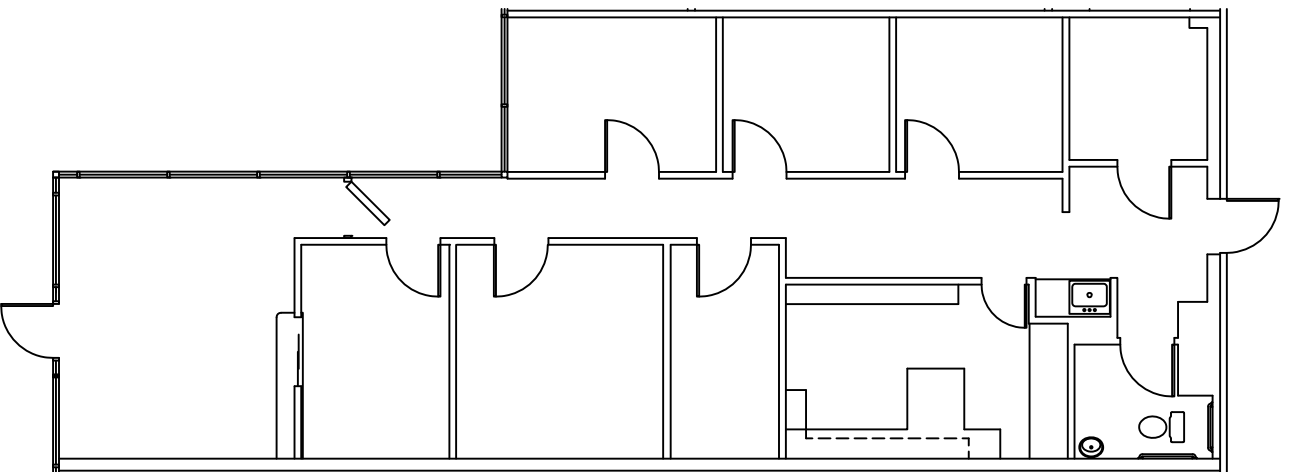
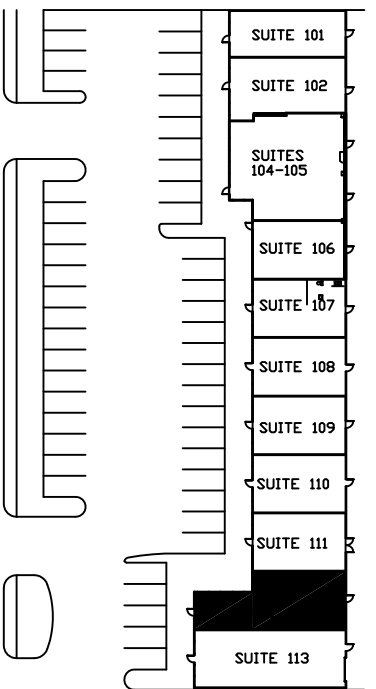


TRINITY PLAZA  
817 South Mill Street  
Lewisville, Texas 75057



Suite 112 – 1,396 SQ. FT.

SCALE = 3/32" - 1'-0"



SOUTH MILL STREET



SITE PLAN

FIRST COMMERCIAL REALTY, LLC

2016 Justin Road, Suite 300

Lewisville, Texas 75077

[www.firstcommercialrealty.com](http://www.firstcommercialrealty.com)

972-966-1111