

Jill Meeks

Office: 251-342-7229
Direct: 251-421-0695
jmeeks@stirlingprop.com

Office Space Available

1605 Rochelle Street, Mobile, AL



For Lease

Property Summary

Office space available on Rochelle Street, just off Highway 90, near Demetropolis Road. Suite A is available at \$650/month. Suite is approximately 1,000 square feet.

Call Jill Meeks to see this cost-effective office!

Available

- Suite A: 1,000 ± SF

Lease Rate

- \$650 Monthly
- Modified Gross

Area Businesses

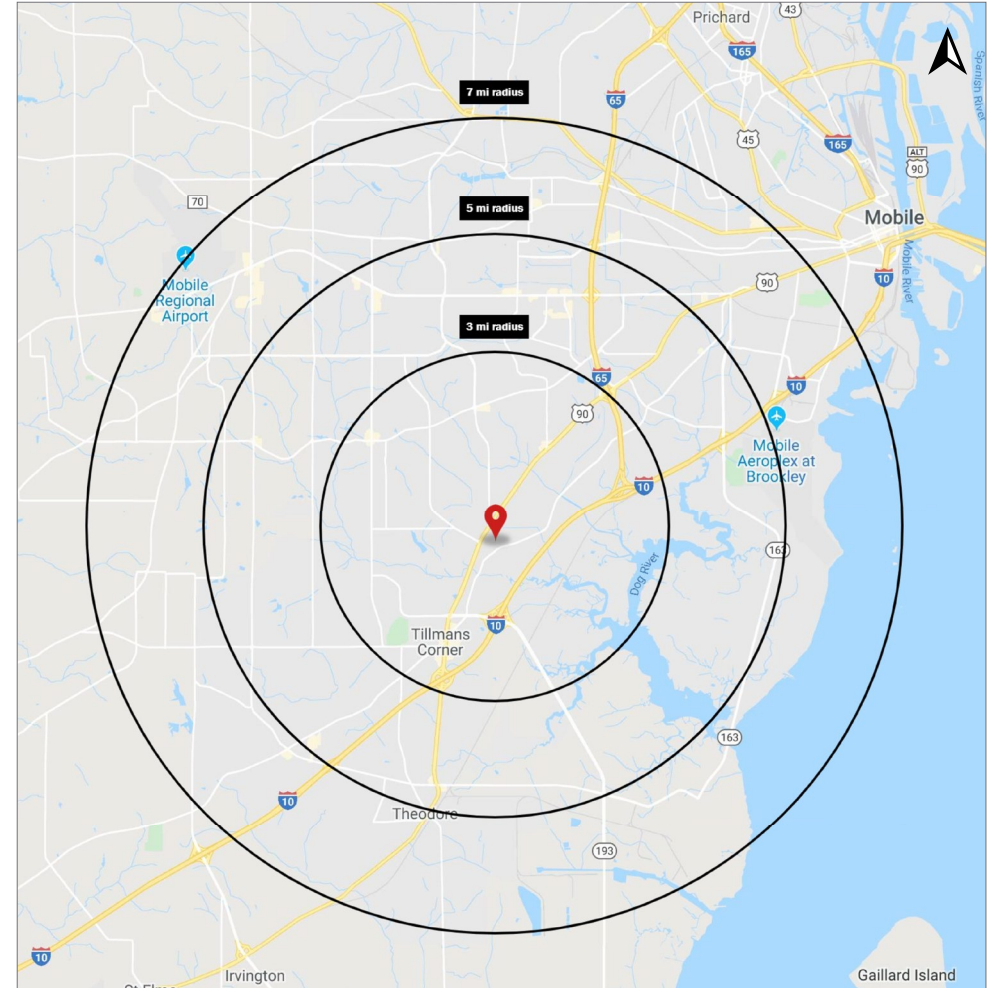
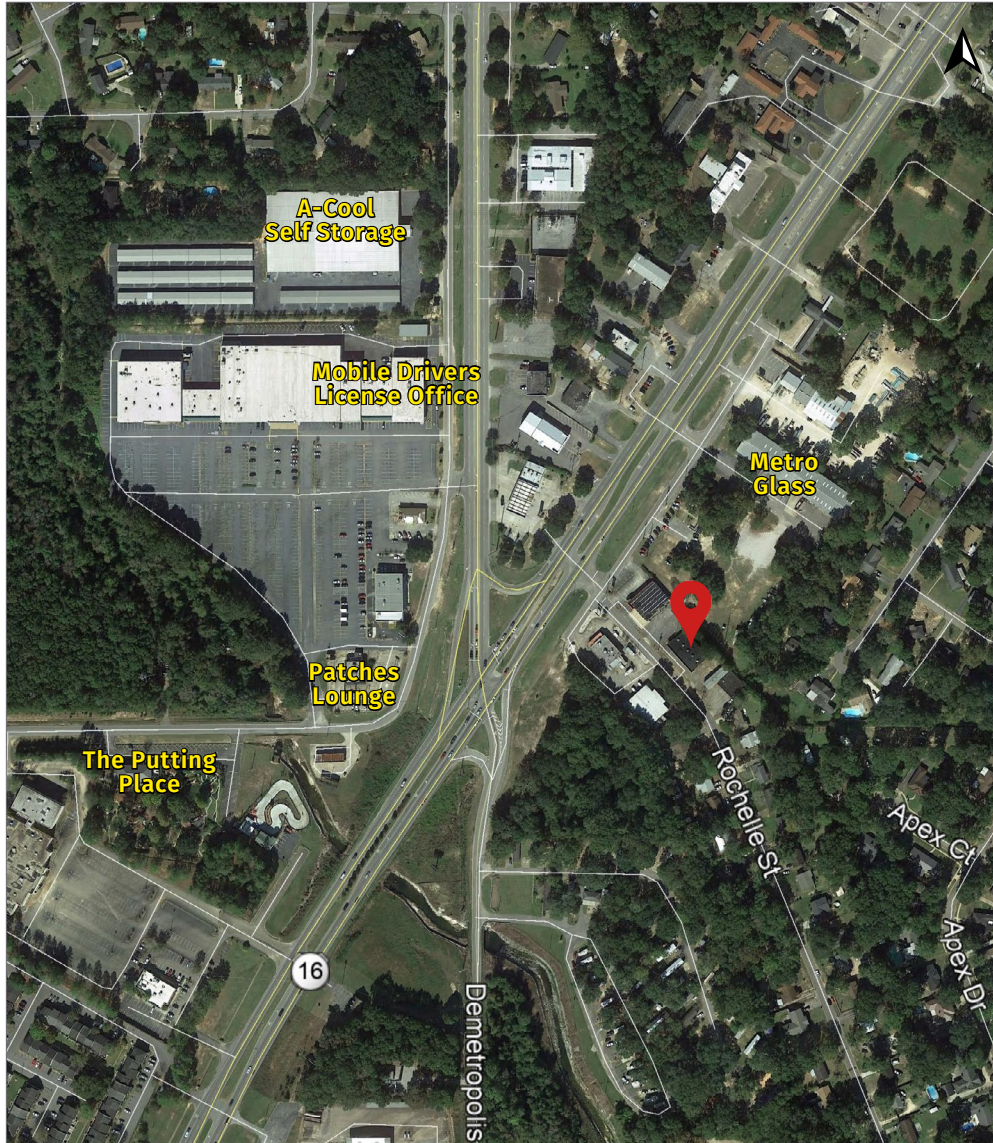
- Mobile Drivers License Office
- A-Cool Self Storage
- Metro Glass
- The Putting Place

Jill Meeks

Office: 251-342-7229
Direct: 251-421-0695
jmeeks@stirlingprop.com

Office Space Available

1605 Rochelle Street, Mobile, AL



2019 Demographics	3 mi.	5 mi.	7 mi.
Population	40,113	115,356	205,800
Avg. HH Income	\$74,077	\$68,568	\$67,105