



FOR LEASE

6016-6110 SE 111th Ave

PORTLAND, OR 97266



KEVIN MURPHY  
503.221.2276  
kevin.murphy@kidder.com

**Kidder  
Mathews**

This information supplied herein is from sources we deem reliable. It is provided without any representation, warranty, or guarantee, expressed or implied as to its accuracy. Prospective Buyer or Tenant should conduct an independent investigation and verification of all matters deemed to be material, including, but not limited to, statements of income and expenses. Consult your attorney, accountant, or other professional advisor.

KIDDER.COM

**FOR LEASE**

# 6016-6110 SE 111th Ave

PORTLAND, OR 97266



- 27,000 SF** shell (divisible to 12,000 SF)
- 3,300 SF** office
- 1.94 ACRE** site
- 25,000 SF** fenced secured yard
- 16'** clear height to truss
- 20'-24'** clear between trusses
- FREE SPAN** warehouse
- 2** docks
- 9** drive-in / through doors
- 600 AMPS** 3-phase power
- WET** fire protection
- IG2 ZONING** General Industrial
- AVAILABLE** June 2023
- LEASE RATE** \$28,385 NNN;  
\$.75 shell/\$.95 office/\$.20 yard

**KEVIN MURPHY**  
503.221.2276  
[kevin.murphy@kidder.com](mailto:kevin.murphy@kidder.com)

[KIDDER.COM](http://KIDDER.COM)

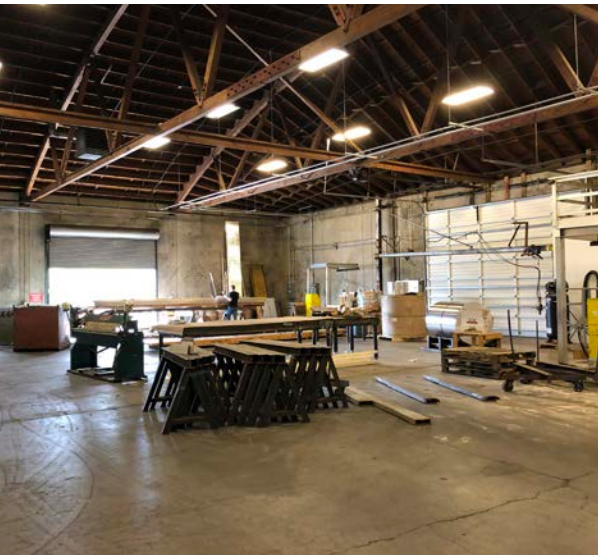
This information supplied herein is from sources we deem reliable. It is provided without any representation, warranty, or guarantee, expressed or implied as to its accuracy. Prospective Buyer or Tenant should conduct an independent investigation and verification of all matters deemed to be material, including, but not limited to, statements of income and expenses. Consult your attorney, accountant, or other professional advisor.



**FOR LEASE**

**6016-6110 SE 111th Ave**

PORTLAND, OR 97266



[KIDDER.COM](http://KIDDER.COM)

This information supplied herein is from sources we deem reliable. It is provided without any representation, warranty, or guarantee, expressed or implied as to its accuracy. Prospective Buyer or Tenant should conduct an independent investigation and verification of all matters deemed to be material, including, but not limited to, statements of income and expenses. Consult your attorney, accountant, or other professional advisor.

 **Kidder  
Mathews**

FOR LEASE

# 6016-6110 SE 111th Ave

PORTLAND, OR 97266



KIDDER.COM

This information supplied herein is from sources we deem reliable. It is provided without any representation, warranty, or guarantee, expressed or implied as to its accuracy. Prospective Buyer or Tenant should conduct an independent investigation and verification of all matters deemed to be material, including, but not limited to, statements of income and expenses. Consult your attorney, accountant, or other professional advisor.

**km** Kidder Mathews