



# Demographic and Income Comparison Profile

7817 S Big Bend Blvd, Saint Louis, Missouri, 63119  
Rings: 1, 3, 5 mile radii

Prepared by Esri  
Latitude: 38.59664  
Longitude: -90.33221

	1 mile	3 miles	5 miles
<b>Census 2010 Summary</b>			
Population	12,733	130,222	344,027
Households	5,451	61,514	155,920
Families	3,107	31,397	81,628
Average Household Size	2.27	2.09	2.14
Owner Occupied Housing Units	4,018	40,363	98,196
Renter Occupied Housing Units	1,433	21,151	57,724
Median Age	39.1	38.2	37.7
<b>2018 Summary</b>			
Population	12,994	130,914	347,360
Households	5,525	61,567	156,822
Families	3,102	31,090	81,237
Average Household Size	2.29	2.10	2.15
Owner Occupied Housing Units	3,817	38,078	93,143
Renter Occupied Housing Units	1,708	23,489	63,679
Median Age	41.1	39.8	39.3
Median Household Income	\$67,476	\$63,106	\$59,228
Average Household Income	\$93,017	\$90,393	\$89,268
<b>2023 Summary</b>			
Population	13,153	130,702	348,494
Households	5,579	61,288	157,028
Families	3,111	30,848	81,091
Average Household Size	2.29	2.11	2.16
Owner Occupied Housing Units	3,828	37,770	92,535
Renter Occupied Housing Units	1,751	23,518	64,494
Median Age	42.5	40.9	40.3
Median Household Income	\$77,312	\$73,430	\$68,592
Average Household Income	\$105,800	\$103,630	\$102,474
<b>Trends: 2018-2023 Annual Rate</b>			
Population	0.24%	-0.03%	0.07%
Households	0.19%	-0.09%	0.03%
Families	0.06%	-0.16%	-0.04%
Owner Households	0.06%	-0.16%	-0.13%
Median Household Income	2.76%	3.08%	2.98%

Source: U.S. Census Bureau, Census 2010 Summary File 1. Esri forecasts for 2018 and 2023.



# Demographic and Income Comparison Profile

7817 S Big Bend Blvd, Saint Louis, Missouri, 63119  
Rings: 1, 3, 5 mile radii

Prepared by Esri  
Latitude: 38.59664  
Longitude: -90.33221

2018 Households by Income	1 mile		3 miles		5 miles	
	Number	Percent	Number	Percent	Number	Percent
<\$15,000	343	6.2%	4,567	7.4%	14,735	9.4%
\$15,000 - \$24,999	384	7.0%	5,069	8.2%	14,100	9.0%
\$25,000 - \$34,999	495	9.0%	5,346	8.7%	14,485	9.2%
\$35,000 - \$49,999	721	13.0%	8,551	13.9%	21,843	13.9%
\$50,000 - \$74,999	1,062	19.2%	11,719	19.0%	28,583	18.2%
\$75,000 - \$99,999	782	14.2%	8,707	14.1%	20,605	13.1%
\$100,000 - \$149,999	904	16.4%	9,279	15.1%	21,316	13.6%
\$150,000 - \$199,999	419	7.6%	3,842	6.2%	8,963	5.7%
\$200,000+	416	7.5%	4,486	7.3%	12,193	7.8%
Median Household Income	\$67,476		\$63,106		\$59,228	
Average Household Income	\$93,017		\$90,393		\$89,268	
Per Capita Income	\$40,592		\$42,705		\$40,804	

2023 Households by Income	1 mile		3 miles		5 miles	
	Number	Percent	Number	Percent	Number	Percent
<\$15,000	236	4.2%	3,115	5.1%	10,540	6.7%
\$15,000 - \$24,999	293	5.3%	3,862	6.3%	11,165	7.1%
\$25,000 - \$34,999	421	7.5%	4,543	7.4%	12,620	8.0%
\$35,000 - \$49,999	670	12.0%	7,911	12.9%	20,593	13.1%
\$50,000 - \$74,999	1,066	19.1%	11,734	19.1%	29,213	18.6%
\$75,000 - \$99,999	848	15.2%	9,316	15.2%	22,526	14.3%
\$100,000 - \$149,999	1,082	19.4%	11,182	18.2%	25,866	16.5%
\$150,000 - \$199,999	473	8.5%	4,335	7.1%	10,138	6.5%
\$200,000+	491	8.8%	5,289	8.6%	14,367	9.1%
Median Household Income	\$77,312		\$73,430		\$68,592	
Average Household Income	\$105,800		\$103,630		\$102,474	
Per Capita Income	\$45,983		\$48,784		\$46,671	

**Data Note:** Income is expressed in current dollars.

**Source:** U.S. Census Bureau, Census 2010 Summary File 1. Esri forecasts for 2018 and 2023.



# Demographic and Income Comparison Profile

7817 S Big Bend Blvd, Saint Louis, Missouri, 63119  
Rings: 1, 3, 5 mile radii

Prepared by Esri  
Latitude: 38.59664  
Longitude: -90.33221

2010 Population by Age	1 mile		3 miles		5 miles	
	Number	Percent	Number	Percent	Number	Percent
Age 0 - 4	780	6.1%	7,737	5.9%	20,360	5.9%
Age 5 - 9	784	6.2%	6,626	5.1%	17,841	5.2%
Age 10 - 14	732	5.7%	6,484	5.0%	17,456	5.1%
Age 15 - 19	832	6.5%	6,670	5.1%	20,692	6.0%
Age 20 - 24	788	6.2%	8,378	6.4%	25,616	7.4%
Age 25 - 34	1,737	13.6%	23,680	18.2%	58,127	16.9%
Age 35 - 44	1,728	13.6%	17,133	13.2%	44,211	12.9%
Age 45 - 54	1,969	15.5%	19,334	14.8%	50,005	14.5%
Age 55 - 64	1,699	13.3%	16,012	12.3%	41,187	12.0%
Age 65 - 74	711	5.6%	7,912	6.1%	22,126	6.4%
Age 75 - 84	612	4.8%	6,468	5.0%	17,539	5.1%
Age 85+	360	2.8%	3,788	2.9%	8,867	2.6%

2018 Population by Age	1 mile		3 miles		5 miles	
	Number	Percent	Number	Percent	Number	Percent
Age 0 - 4	675	5.2%	6,803	5.2%	18,192	5.2%
Age 5 - 9	763	5.9%	6,924	5.3%	18,401	5.3%
Age 10 - 14	828	6.4%	6,964	5.3%	18,443	5.3%
Age 15 - 19	879	6.8%	6,523	5.0%	19,860	5.7%
Age 20 - 24	784	6.0%	8,159	6.2%	24,501	7.1%
Age 25 - 34	1,458	11.2%	20,514	15.7%	52,891	15.2%
Age 35 - 44	1,774	13.7%	18,418	14.1%	46,386	13.4%
Age 45 - 54	1,771	13.6%	16,567	12.7%	43,043	12.4%
Age 55 - 64	1,868	14.4%	18,021	13.8%	46,674	13.4%
Age 65 - 74	1,285	9.9%	11,752	9.0%	31,598	9.1%
Age 75 - 84	522	4.0%	6,115	4.7%	17,082	4.9%
Age 85+	387	3.0%	4,154	3.2%	10,290	3.0%

2023 Population by Age	1 mile		3 miles		5 miles	
	Number	Percent	Number	Percent	Number	Percent
Age 0 - 4	665	5.1%	6,751	5.2%	18,192	5.2%
Age 5 - 9	711	5.4%	6,504	5.0%	17,670	5.1%
Age 10 - 14	796	6.1%	6,818	5.2%	18,212	5.2%
Age 15 - 19	915	7.0%	6,640	5.1%	20,006	5.7%
Age 20 - 24	775	5.9%	7,910	6.1%	23,543	6.8%
Age 25 - 34	1,429	10.9%	20,150	15.4%	51,941	14.9%
Age 35 - 44	1,738	13.2%	18,219	13.9%	47,200	13.5%
Age 45 - 54	1,707	13.0%	15,992	12.2%	41,388	11.9%
Age 55 - 64	1,780	13.5%	16,658	12.7%	43,538	12.5%
Age 65 - 74	1,577	12.0%	13,849	10.6%	36,812	10.6%
Age 75 - 84	703	5.3%	7,260	5.6%	19,965	5.7%
Age 85+	357	2.7%	3,951	3.0%	10,027	2.9%

Source: U.S. Census Bureau, Census 2010 Summary File 1. Esri forecasts for 2018 and 2023.



# Demographic and Income Comparison Profile

7817 S Big Bend Blvd, Saint Louis, Missouri, 63119  
Rings: 1, 3, 5 mile radii

Prepared by Esri  
Latitude: 38.59664  
Longitude: -90.33221

2010 Race and Ethnicity	1 mile		3 miles		5 miles	
	Number	Percent	Number	Percent	Number	Percent
White Alone	11,502	90.3%	113,963	87.5%	274,135	79.7%
Black Alone	638	5.0%	8,856	6.8%	44,319	12.9%
American Indian Alone	26	0.2%	268	0.2%	786	0.2%
Asian Alone	249	2.0%	3,754	2.9%	13,776	4.0%
Pacific Islander Alone	2	0.0%	40	0.0%	103	0.0%
Some Other Race Alone	83	0.7%	872	0.7%	3,292	1.0%
Two or More Races	233	1.8%	2,470	1.9%	7,617	2.2%
Hispanic Origin (Any Race)	276	2.2%	3,496	2.7%	11,201	3.3%

2018 Race and Ethnicity	Number		Percent		Number		Percent	
	Number	Percent	Number	Percent	Number	Percent	Number	Percent
White Alone	11,457	88.2%	112,467	85.9%	272,890	78.6%		
Black Alone	763	5.9%	9,347	7.1%	43,672	12.6%		
American Indian Alone	30	0.2%	263	0.2%	756	0.2%		
Asian Alone	327	2.5%	4,695	3.6%	16,724	4.8%		
Pacific Islander Alone	2	0.0%	37	0.0%	107	0.0%		
Some Other Race Alone	101	0.8%	1,006	0.8%	3,796	1.1%		
Two or More Races	315	2.4%	3,098	2.4%	9,415	2.7%		
Hispanic Origin (Any Race)	345	2.7%	4,195	3.2%	13,405	3.9%		

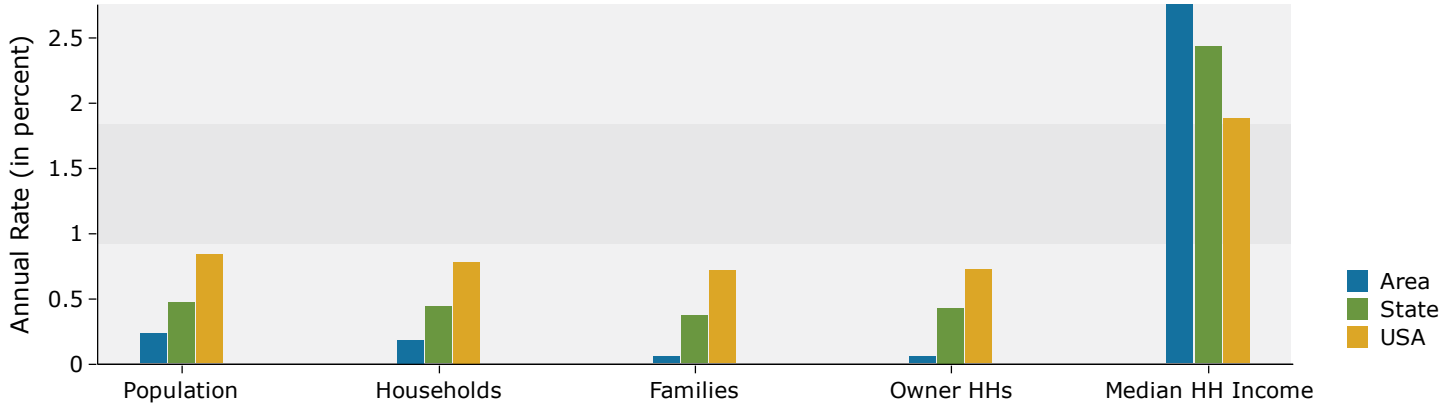
  

2023 Race and Ethnicity	Number		Percent		Number		Percent	
	Number	Percent	Number	Percent	Number	Percent	Number	Percent
White Alone	11,320	86.1%	110,144	84.3%	269,281	77.3%		
Black Alone	889	6.8%	9,970	7.6%	43,853	12.6%		
American Indian Alone	31	0.2%	265	0.2%	759	0.2%		
Asian Alone	398	3.0%	5,503	4.2%	19,273	5.5%		
Pacific Islander Alone	2	0.0%	36	0.0%	111	0.0%		
Some Other Race Alone	119	0.9%	1,152	0.9%	4,313	1.2%		
Two or More Races	393	3.0%	3,632	2.8%	10,904	3.1%		
Hispanic Origin (Any Race)	414	3.1%	4,864	3.7%	15,507	4.4%		

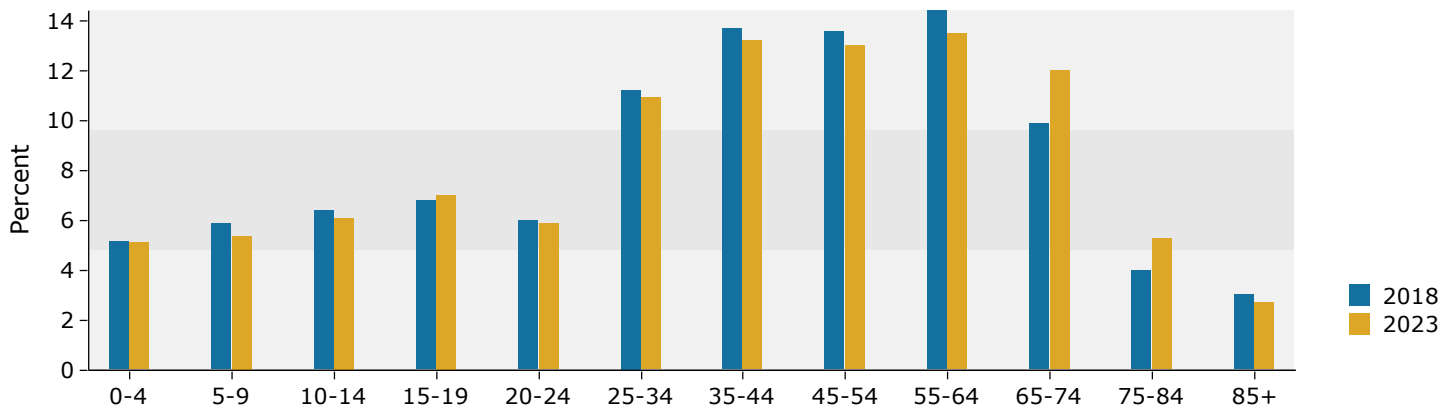
Source: U.S. Census Bureau, Census 2010 Summary File 1. Esri forecasts for 2018 and 2023.

## 1 mile

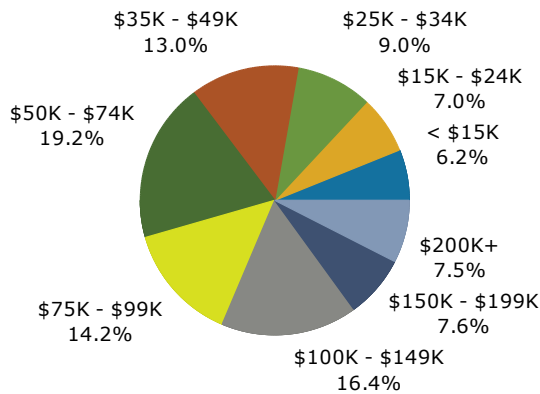
### Trends 2018-2023



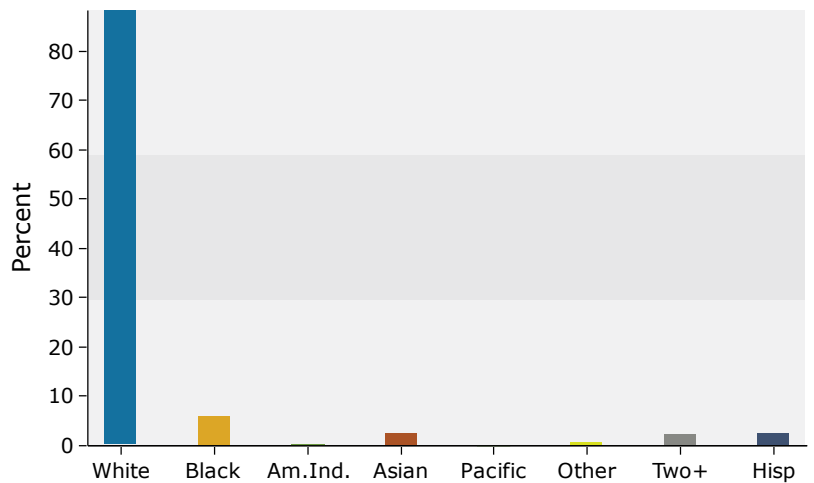
### Population by Age



### 2018 Household Income



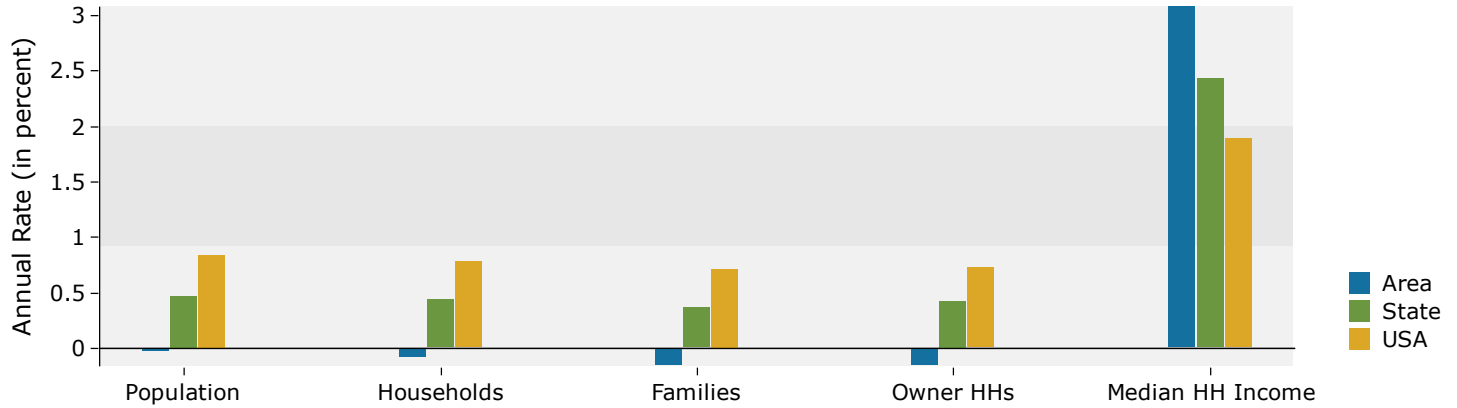
### 2018 Population by Race



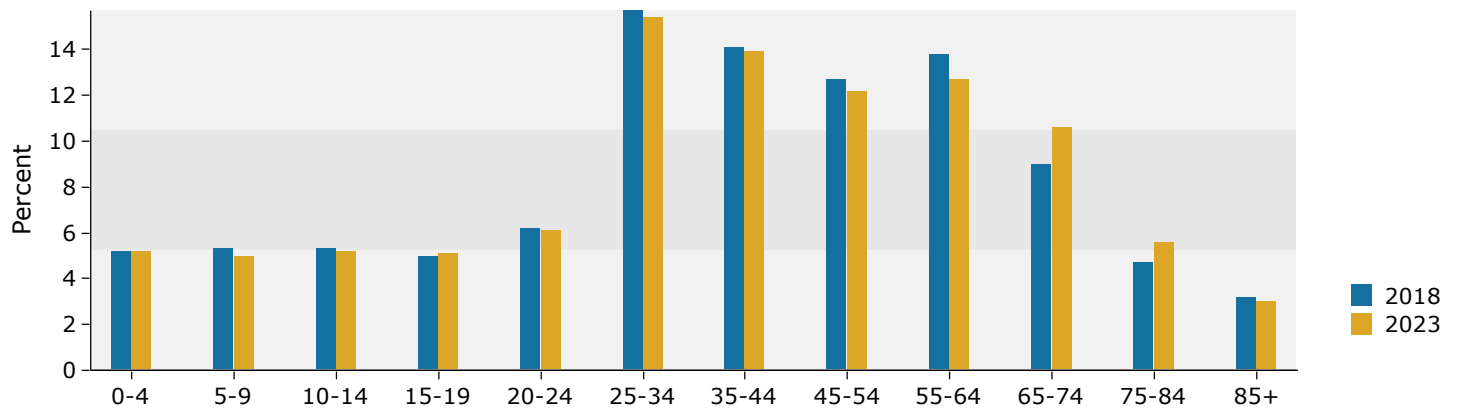
Source: U.S. Census Bureau, Census 2010 Summary File 1. Esri forecasts for 2018 and 2023.

## 3 miles

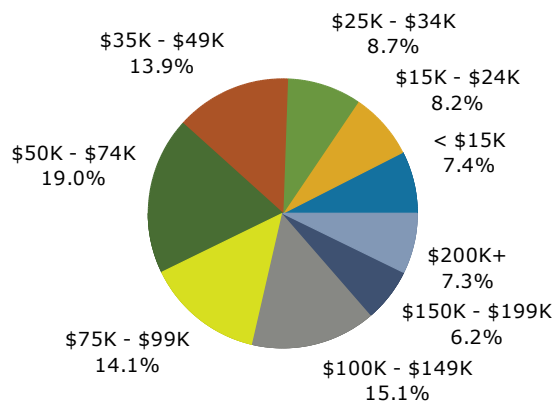
### Trends 2018-2023



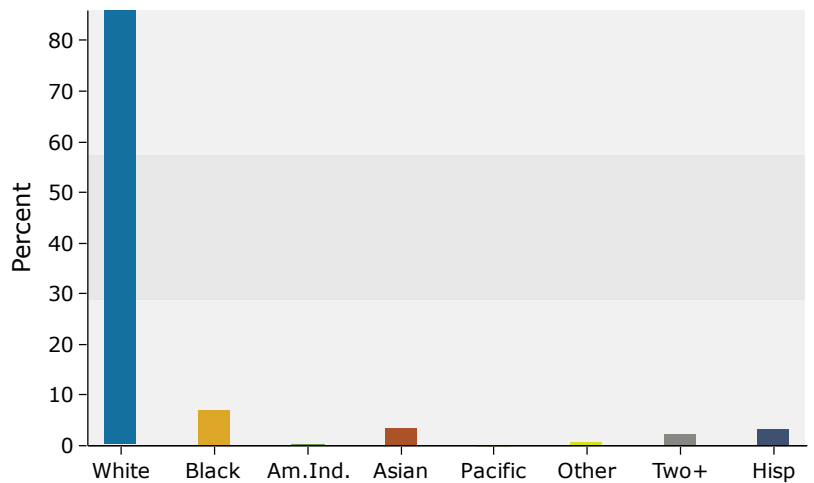
### Population by Age



### 2018 Household Income



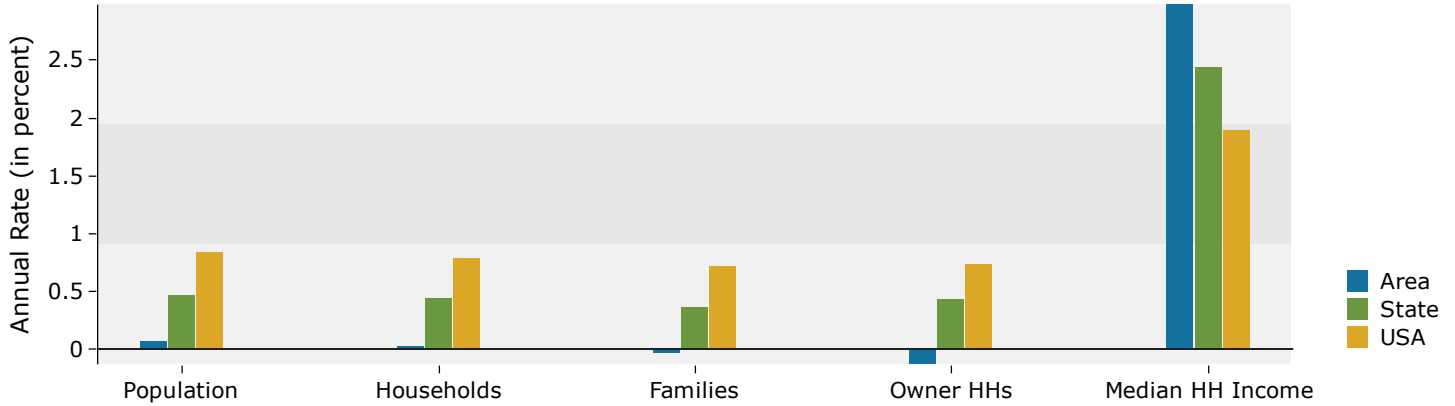
### 2018 Population by Race



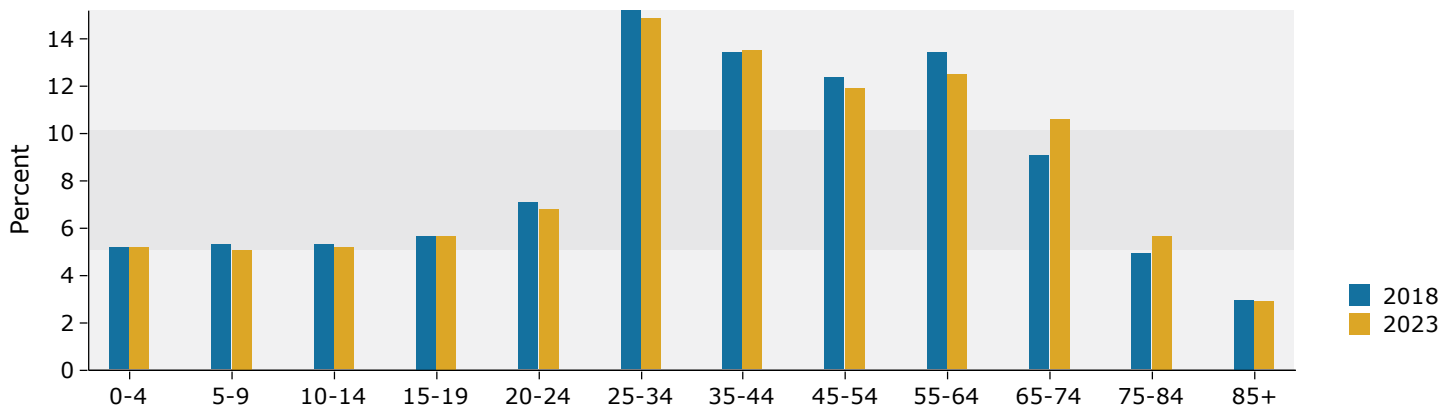
Source: U.S. Census Bureau, Census 2010 Summary File 1. Esri forecasts for 2018 and 2023.

## 5 miles

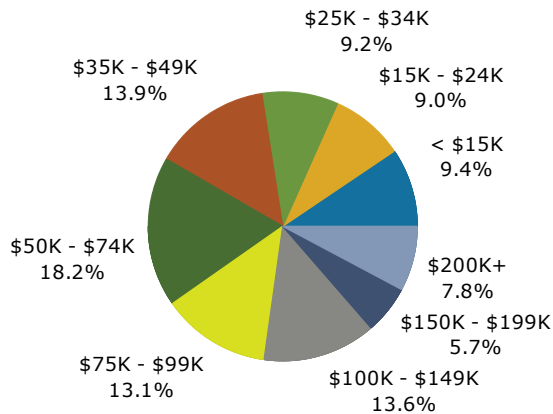
### Trends 2018-2023



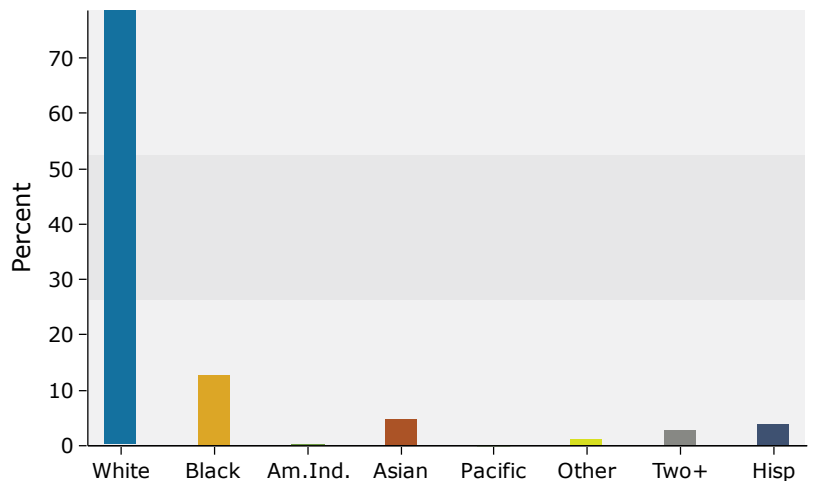
### Population by Age



### 2018 Household Income



### 2018 Population by Race



Source: U.S. Census Bureau, Census 2010 Summary File 1. Esri forecasts for 2018 and 2023.