



Brompton Road

KNIGHTSBRIDGE • £5,167 PER MONTH

- Class E Office
- Approx 700 Sqft
- Available immediately
- Secure building close to Knightsbridge underground
- 3rd Floor with two lifts
- Air-con + 24 hour access





A spacious Class E office in a secure building close to Knightsbridge underground with air-con, kitchenette, WC and 24 hr access.

DESCRIPTION

A Class E office space comprising part of the third floor (with 2 lifts) of a secure building on Brompton Road, SW3 having an approximate net internal floor area of 700 sq ft. The unit offers an open plan area with air conditioning together with a separate private kitchenette and private washroom. Available unfurnished.

The unit is situated on the corner of Ovington Gardens and Brompton Road and ideally located for the amenities of Knightsbridge and Sloane Street and within walking distance of Chelsea and South Kensington. •NB - Some images have been digitally enhanced.

COMMENCING RENT: £62,000
 RENT REVIEWS: Every 3 years
 INITIAL LEASE: 3-5 Years with Sections 24 to 28 of the 1954 Act excluded
 RENT DEPOSIT: 6 Months
 SERVICE CHARGE: £2,500 p.a
 BUSINESS RATES: Payable by the tenant (£13,000p.a)

TERMS

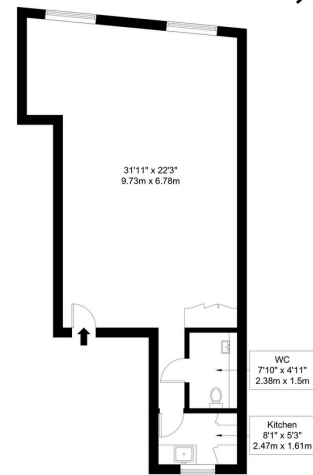
Price: £5,167 per month
 Local Authority: RBKC
 Council Tax:
 Energy Rating: 86.00



Edward McCulloch
 Partner
 0208 057 2028
 edward.mcculloch@hardinggreen.com

Brompton Road, SW3 1LZ

Approx Gross Internal Area = 65.2 sq m / 702 sq ft



Fourth Floor

Ref :

Copyright **BLEU PLAN**

The Floor plan is not to scale and measurements and areas shown are approximate and therefore should be used for illustrative purposes only. The plan has been prepared in accordance with the RICS Code of Measuring Practice and whilst we have confidence in the information produced it must not be relied on. Maximum heights and widths are represented on the floor plan. If there is any aspect of particular importance, you should carry out or commission your own inspection of the property.
 Copyright © BleuPlan



FIND OUT MORE

Important Notice. We would like to inform prospective tenants that these lettings particulars have been prepared as a general guide only. A detailed survey has not been carried out, nor the services, appliances and fittings tested (remove). Room sizes should not be relied upon for furnishing purposes and are approximate. If floor plans are included, they are for guidance only and illustration purposes only and may not be to scale. If there are any important matters likely to affect your decision to rent, please contact us before viewing the property.