

**TOM
STARNER**

A DIVISION OF
Gene Cook
Real Estate

LIGHT BUSINESS OR MANUFACTURING LOTS

MANHATTAN, MT



FARMSTEAD SUBDIVISION

The Farmstead Subdivision combines the beauty of Montana's rural landscape with the convenience of living just minutes from everything the Gallatin Valley has to offer. A Master Plan designed for residential living, parks, commercial and light business/manufacturing will preserve the small town feel as the development grows.

.... **FOR**
SALE

TOM STARNER *broker*

406.539.0717
ts@genecookrealestate.com

Gene Cook Real Estate

1276 N. 15th Avenue, #103 | Bozeman, MT 59715

T • 406.586.0302 | F • 406.586.6105
www.genecookrealestate.com

.... FOR
SALE

LIGHT BUSINESS OR MANUFACTURING LOTS

MANHATTAN, MT

PROPERTY INFORMATION

DIRECTIONS

Located just off I-90 in the Farmstead Mixed-Use Development, Manhattan, MT.

ZONING ■ MIXED USE

- Excellent location just off I-90
- Access to linear and community parks
- Town of Manhattan water and sewer
- Close proximity to downtown Manhattan

LOT 27 WOODEN SHOE LANE
\$91,824
.530 ACRES | MLS #200499

LOT 15 WOODEN SHOE LANE
\$146,188
.840 ACRES | MLS #200504

LOT 22 WINDMILL WAY
\$163,611
1.250 ACRES | MLS #200500

LOT 19 WOODEN SHOE LANE
\$221,830
1.460 ACRES | MLS #200503

LOT 20 WOODEN SHOE LANE
\$222,135
1.460 ACRES | MLS #200501

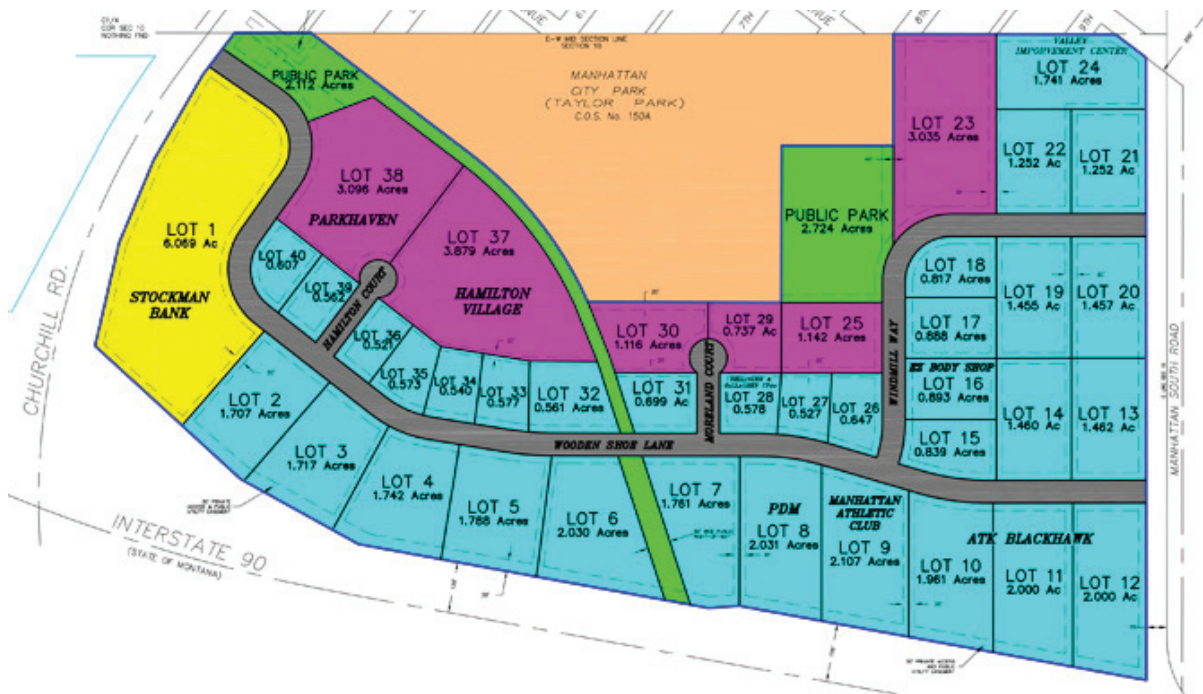
LOT 14 WOODEN SHOE LANE
\$222,593
1.460 ACRES | MLS #200505

LOT 13 WOODEN SHOE LANE
\$222,898
1.462 ACRES | MLS #200508

LOT 7 WOODEN SHOE LANE
\$230,127
1.760 ACRES | MLS #200455

LOT 2 WOODEN SHOE LANE
\$297,428
1.710 ACRES | MLS #200507

LOT 3 WOODEN SHOE LANE
\$299,172
1.720 ACRES | MLS #200506



TOM STARNER

A DIVISION OF
Gene Cook
Real Estate

TOM STARNER broker

406.539.0717
ts@genecookrealestate.com

Gene Cook Real Estate

1276 N. 15th Avenue, #103 | Bozeman, MT 59715

T • 406.586.0302 | F • 406.586.6105

www.genecookrealestate.com