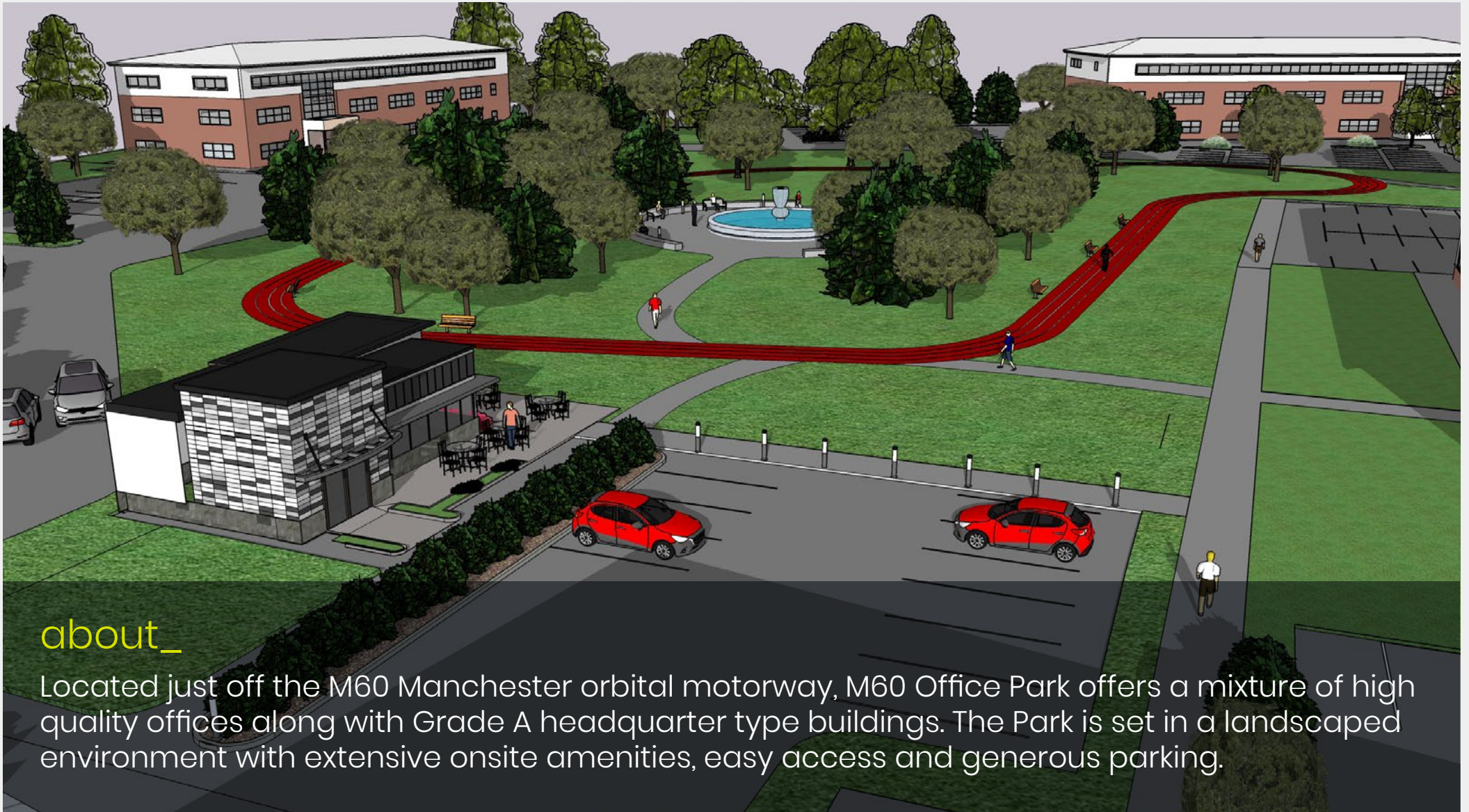


M60
office park
junction 16 | M27 8FF

A prime location for business



about_

Located just off the M60 Manchester orbital motorway, M60 Office Park offers a mixture of high quality offices along with Grade A headquarter type buildings. The Park is set in a landscaped environment with extensive onsite amenities, easy access and generous parking.

amenities_

live well and work well with our onsite amenities. At M60 Office Park we offer the following:

- _ Coffee shop
- _ Generous onsite Parking 1:200sqft
- _ Fully equipped gym with showers and changing facilities
- _ Landscaped green amenity areas
- _ EV charging ports
- _ Manned security and 24 hr CCTV







drive time_

Bolton	-	16 mins
Bury	-	19 mins
Manchester	-	23 mins
Preston	-	44 mins
Liverpool	-	56 mins
Warrington	-	38 mins
Rochdale	-	20 mins
Stockport	-	27 mins

close_

space to let_

M60 Office park comprises a mix of high quality and Grade A offices ranging from 2,026 sq ft to 23,365 sq ft.

[_oak court](#)

[_beech court](#)

[_maple court](#)

[_elm court](#)



[beech court_](#)



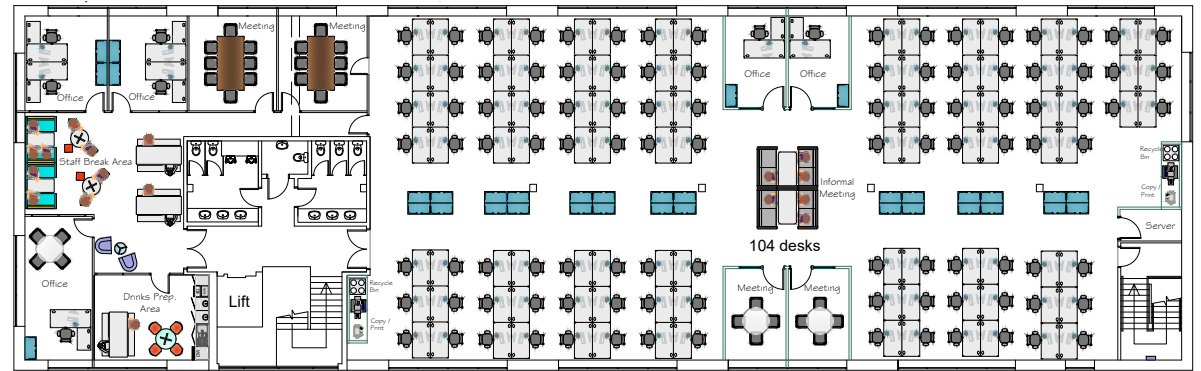
[elm court_](#)

oak court_

specification_

- DDA compliant
- New air conditioning system
- New carpets throughout
- Passenger lift
- Fitted kitchen
- Perimeter trunking for power and data cabling
- New flat panel LED lights.

_second floor



availability_

ground floor	let to Enersys
first floor	let to Hall & Kaye
2nd floor – Suite A	1,678 sqft
2nd floor – Suite B	5,823 sqft
total available	7,501 sq ft



beech court_

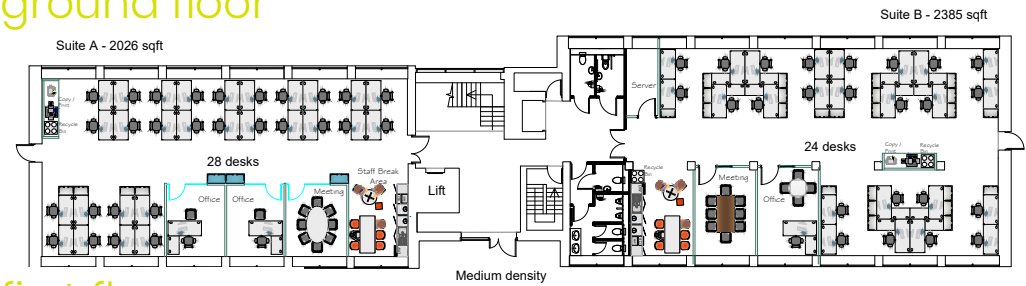
specification_

- DDA compliant
- New air conditioning system
- New carpets throughout
- Passenger lift
- Perimeter trunking for power and data cabling
- New flat panel LED lights
- New luxury toilet facilities.

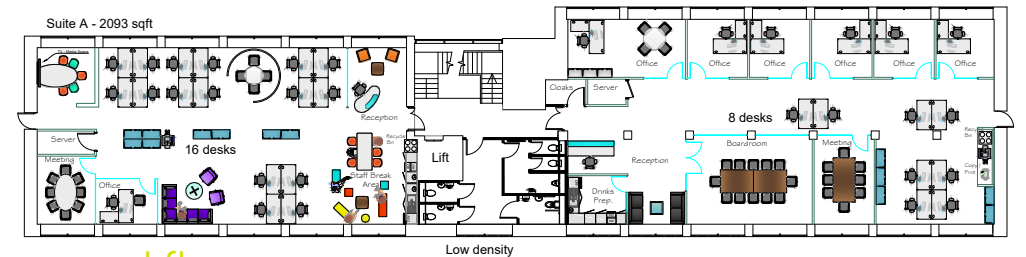
availability_



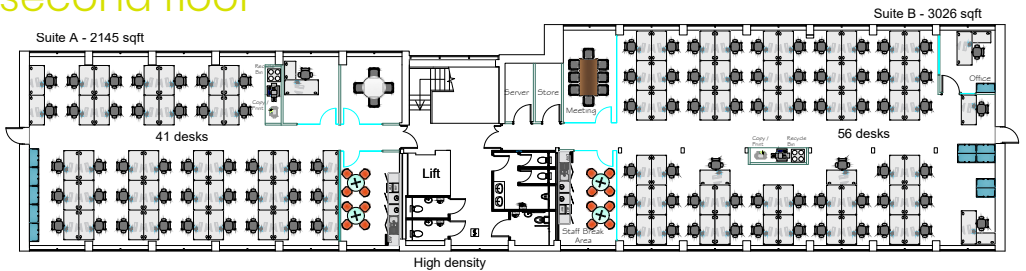
_ground floor



_first floor



_second floor



ground floor	suite A - 2,026 sqft	suite B - 2,385 sqft
first floor	suite A - 2,093 sqft	suite B - 2,785 sqft
second floor	suite A - 2,145 sqft	suite B - 3,026 sqft
whole building	15,107 sq ft	

maple court_

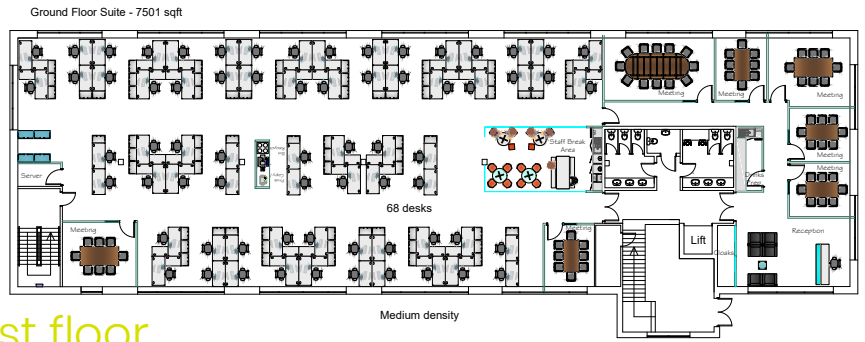
specification_

- Grade A
- DDA compliant
- Raised access floors
- New air conditioning system
- New carpets throughout
- Passenger lifts
- New flat panel LED lights
- New luxury toilet facilities.

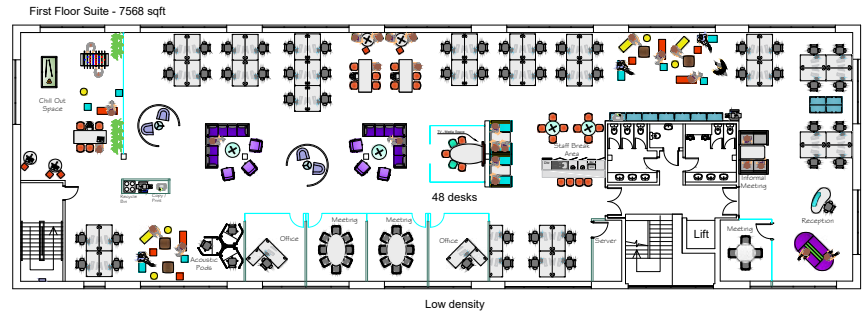
availability_

ground floor	suite A - 7,501 sqft
first floor	suite A - 7,568 sqft
2nd floor	suite A - 7,568 sqft
whole building	23,502 sq ft

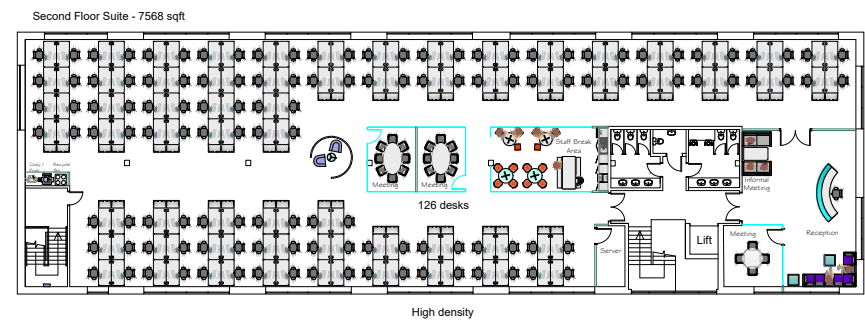
_ground floor



_first floor



_second floor



elm court_

specification_

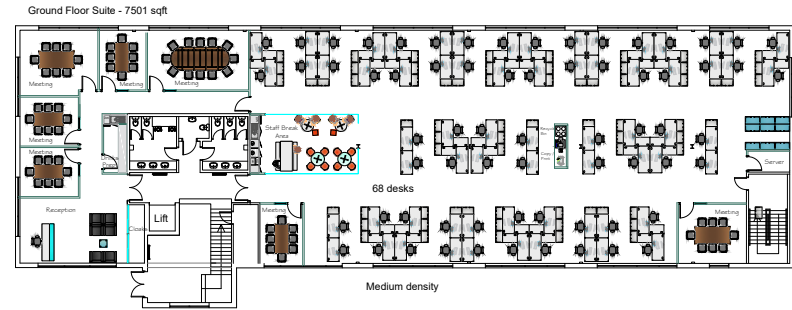
- Grade A
- DDA compliant
- Raised access floors
- New air conditioning system
- New carpets throughout
- Passenger lift
- New flat panel LED lights
- New luxury toilet facilities.

availability_

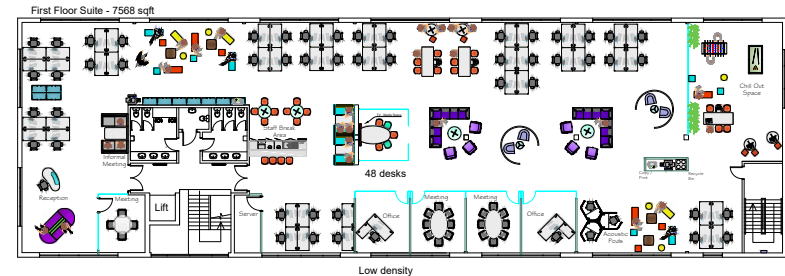
ground floor	suite A - 7,501 sqft
first floor	suite A - 7,568 sqft
2nd floor	suite A - 7,568 sqft
whole building	23,502 sq ft



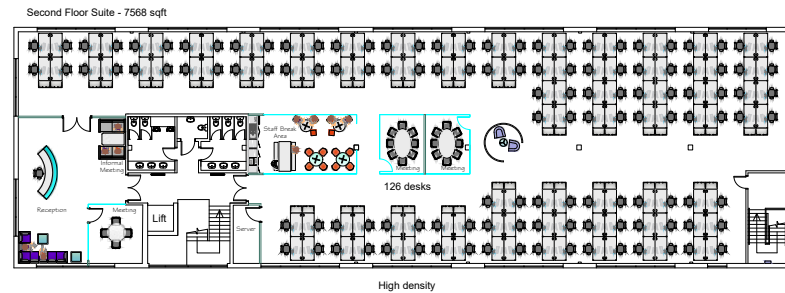
_ground floor

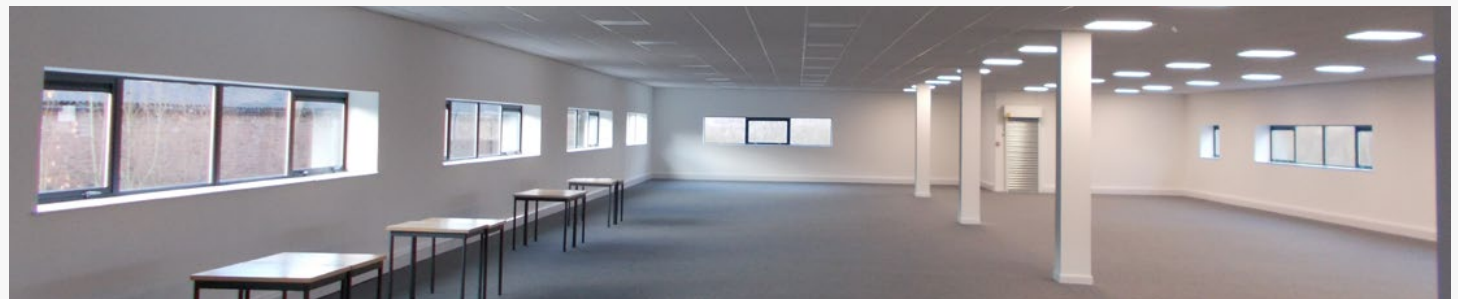


_first floor



_second floor





Managed by



11a Olympic Business Park
Birchwood
Warrington
Cheshire
WA2 0YL

01925 810529
www.primepropertyltd.co.uk

for viewings or further information please contact our joint agents_



Richard Wharton
T: 0161 238 6227
richard.wharton@eu.jll.com



Rob Yates, Partner
T: 0161 455 3780
M: 07747 008 442
rob.yates@cushwake.com

Andrew Crabtree, Surveyor
T: 0161 235 7664
M: 07972 188 005
andrew.crabtree@cushwake.com

Cushman & Wakefield give notice to anyone who may read these particulars as follows: 1. These particulars are prepared for the guidance only of prospective purchasers. They are intended to give a fair overall description of the property but are not intended to constitute part of an offer or contract. 2. Any information contained herein (whether in the text, plans or photographs) is given in good faith but should not be relied upon as being a statement or representation of fact. 3. Nothing in these particulars shall be deemed to be a statement that the property is in good condition or otherwise nor that any services or facilities are in good working order. 4. The photographs appearing in this brochure show only certain parts and aspects of the property at the time when the photographs were taken. Certain aspects may have changed since the photographs were taken and it should not be assumed that the property remains precisely as displayed in the photographs. Furthermore no assumptions should be made in respect of parts of the property which are not shown in the photographs. 5. Any areas, measurements or distances referred to herein are approximate only. 6. Where there is reference in these particulars to the fact that alterations have been carried out or that a particular use is made of any part of the property this is not intended to be a statement that any necessary planning, building regulations or other consents have been obtained and these matters must be verified by any intending purchaser. 7. Descriptions of a property are inevitably subjective and the descriptions contained herein are used in good faith as an opinion and not by way of statement of fact. **Designed by i-brochure, April 2018.**