

Door Schedule

NO.	LOCATION	SIZE	DOOR		FRAME	LABEL	GLAZING	DETAILS			LINTEL	LOCKING FUNCTION	REMARKS
			MAT. TYPE	MAT. TYPE				HEAD	JAMB	SILL			
100	LOUNGE	3'-0"x7'-0"x1 3/4"	HM	F	HM							FULL GLAZING, CLOSER	
101A	CONTROL ROOM A	3'-0"x7'-0"x1 3/4"	WD	F	WD							SOUND PROOF	
101B	CONTROL ROOM A	3'-0"x7'-0"x1 3/4"	WD	F	WD							SOUND PROOF	
102	ISOLATION BOOTH	3'-0"x7'-0"x1 3/4"	WD/GL	F	WD							SOUND PROOF	
103	ISOLATION BOOTH	6'-0"x7'-0"x1 3/4"	WD/GL	F	WD							SOUND PROOF, SLIDER	
104	STUDIO A	3'-0"x7'-0"x1 3/4"	HM	F	HM							SOUND PROOF	
105	CONTROL ROOM B	3'-0"x7'-0"x1 3/4"	WD	F	WD							SOUND PROOF	
106	STUDIO B	3'-0"x7'-0"x1 3/4"	WD	F	WD							SOUND PROOF	
107	B.F. UNISEX RESTROOM	3'-0"x7'-0"x1 3/4"	WD	F	WD								
108A	BREAK AREA	3'-0"x7'-0"x1 3/4"	WD	F	WD								
108B	BREAK AREA	3'-0"x7'-0"x1 3/4"	WD	F	WD								
109	B.F. UNISEX RESTROOM	3'-0"x7'-0"x1 3/4"	WD	F	WD								
110	CORRIDOR	3'-0"x7'-0"x1 3/4"	HM	F	HM							INSULATED	
111	MECHANICAL ROOM	3'-0"x7'-0"x1 3/4"	WD	F	WD								
112	REHEARSAL STUDIO 1	3'-0"x7'-0"x1 3/4"	WD	F	WD							SOUND PROOF	
113	REHEARSAL STUDIO 2	3'-0"x7'-0"x1 3/4"	WD	F	WD							SOUND PROOF	
114	REHEARSAL STUDIO 3	3'-0"x7'-0"x1 3/4"	WD	F	WD							SOUND PROOF	
115	MECHANICAL ROOM	3'-0"x7'-0"x1 3/4"	WD	F	WD								
116	REHEARSAL STUDIO 4	3'-0"x7'-0"x1 3/4"	WD	F	WD							SOUND PROOF	
117	CLOSET	3'-0"x7'-0"x1 3/4"	WD	F	WD								

Hardware Notes:

EGRESS DOOR HARDWARE SHALL BE READILY OPERABLE FROM THE EGRESS SIDE WITHOUT THE USE OF A KEY OR SPECIAL KNOWLEDGE OR EFFORT. SECTION 1003.3.1.8.

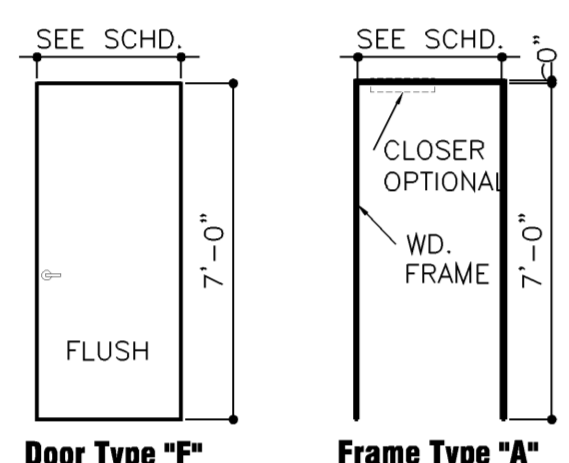
CLOSERS AND LOCKSETS SHALL MEET ADA REQUIREMENTS - SECTION 404.2.7 & 404.2.8.

EXTERIOR DOORS TO HAVE MAXIMUM 8.5 POUNDS PUSH/PULL PRESSURE; INTERIOR DOORS TO HAVE MAX. 5 POUNDS PUSH/PULL PRESSURE.

ALL DOORS TO HAVE LEVER TYPE OPERATOR

ALL DOOR HARDWARE MUST COMPLY WITH STATE AND LOCAL CODE REQUIREMENTS.

ACCESSIBLE DOORS SHALL NOT HAVE THUMB TURNS OR OTHER HARDWARE THAT REQUIRES TIGHT GRASPING, PINCHING OR TURNING OF THE WRIST, PER MICHIGAN BARRIER FREE SECTION 309.4.

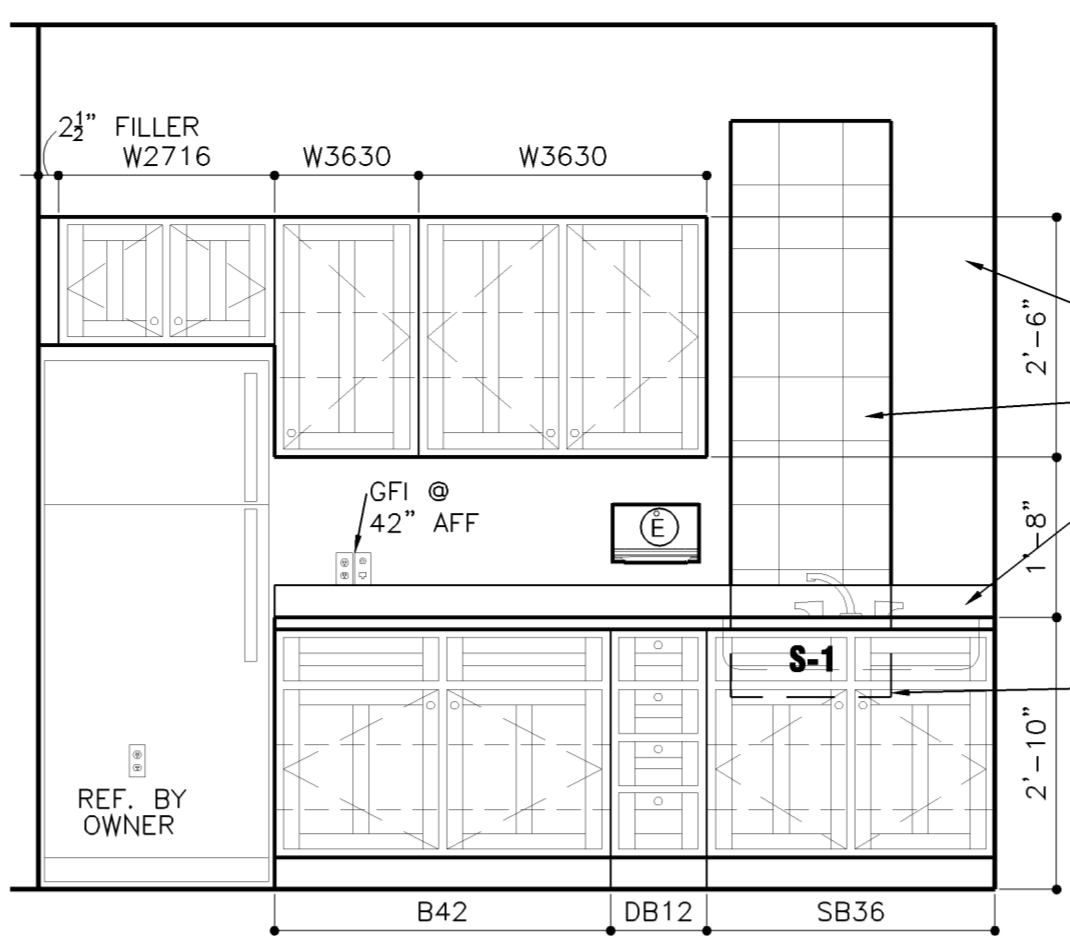


Abbreviations

AL	=	ALUMINUM
APG	=	ACOUSTICAL PANEL GRID - 2'x4'
CPT	=	CARPET
CONC	=	CONCRETE
FACT	=	FACTORY
GL	=	GLASS
GPDW	=	GYPSON DRYWALL
MTL	=	METAL
NA	=	NOT APPLICABLE
PT	=	PAIN
QT	=	QUARRY TILE
TEMP	=	TEMPERED
VCT	=	VINYL COMPOSITE TILE
WD	=	WOOD

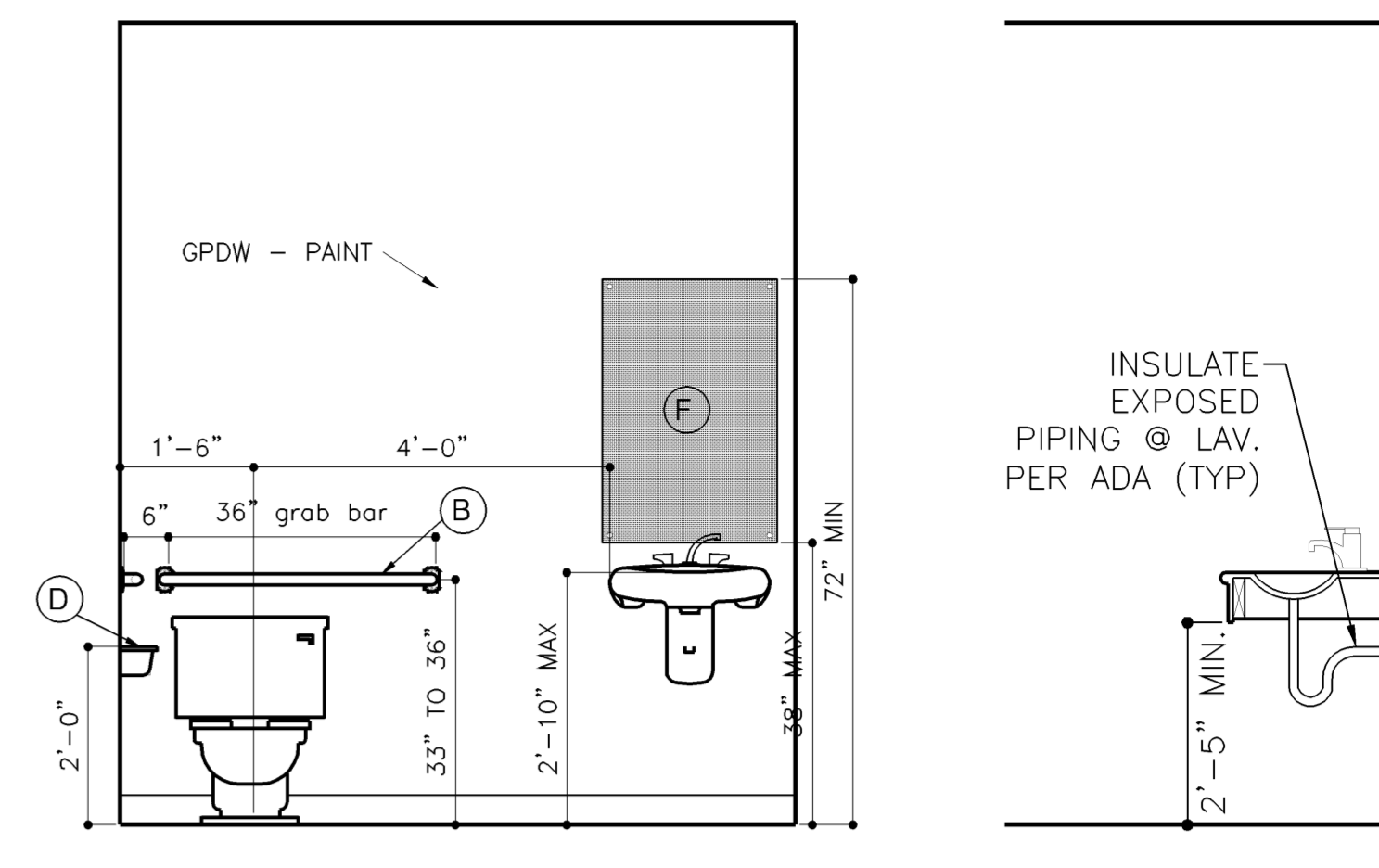
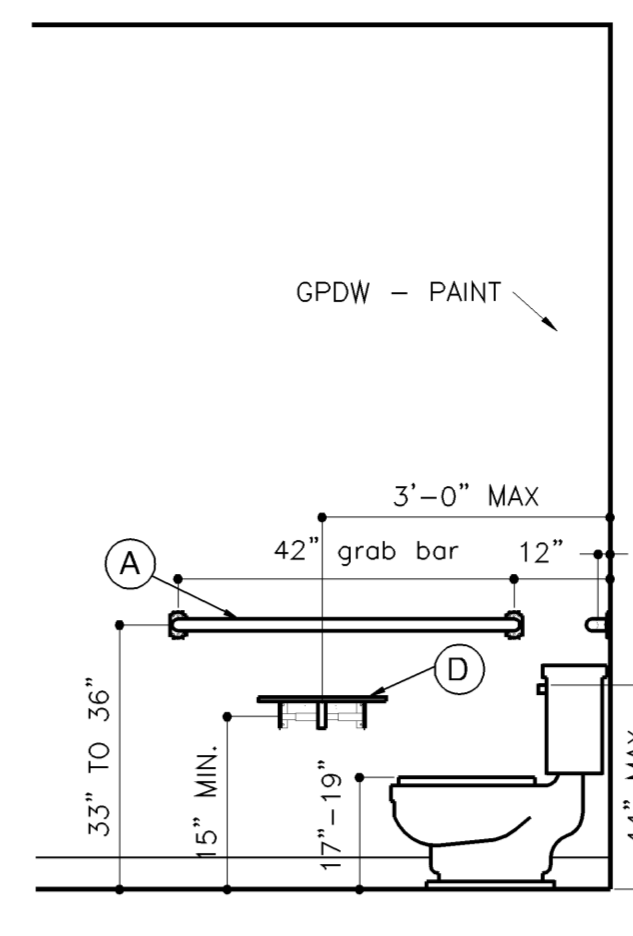
D11 Interior Elevation

A-1 Scale: 1/2"=1'-0"



D7 Interior Elevation

A-1 Scale: 1/2"=1'-0"



Wall Type Legend

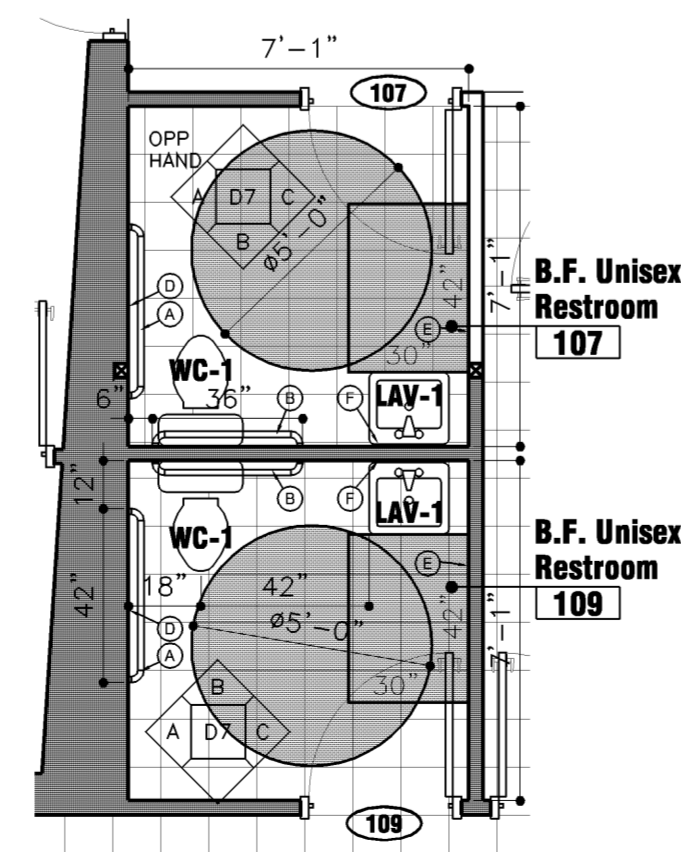
- A) 1/2" GPDW-PAINT (BOTH SIDES) ON 2X4 STUDS @ 16" O.C. EXTEND AND ATTACH TO BOTTOM OF JOIST W/ SOUND ATTENUATION BATTS. (U.N.O.)
- B) 5/8" GPDW-PAINT (BOTH SIDES) ON 2X4 STUDS @ 16" O.C. STAGGERED ON 2X6 PLATE. EXTEND AND ATTACH TO BOTTOM OF JOIST W/ SOUND ATTENUATION BATTS.
- C) 5/8" GPDW-PAINT (BOTH SIDES) ON 2 X 2X STUD WALLS @ 16" O.C. W/ 1" GAP MIN. BETWEEN WALLS. EXTEND AND ATTACH TO BOTTOM OF JOIST W/ SOUND ATTENUATION BATTS.
- D) (2) 5/8" GPDW-PAINT ON DOUBLE 2X4 FURRING @ 16" O.C. O/ EXISTING WALL. EXTEND AND ATTACH TO BOTTOM OF JOIST W/ SOUND ATTENUATION BATTS.
- E) (2) 5/8" GPDW-PAINT ON 2X4 FURRING @ 16" O.C. O/ EXISTING WALL. EXTEND AND ATTACH TO BOTTOM OF JOIST W/ SOUND ATTENUATION BATTS.

Room Finish Schedule

NO.	NAME	FLOOR		WALLS		CEILINGS		REMARKS
		MATERIAL	FINISH	MATERIAL	FINISH	MATERIAL	FINISH HEIGHT	
100	LOUNGE	CONC.	CPT	VINYL	GPDW	PT	EXISTING	PT VARIES
101	CONTROL ROOM A	CONC.	CPT	VINYL	GPDW	PT	GPDW	PT VARIES
102	ISOLATION BOOTH	CONC.	CPT	VINYL	GPDW	PT	EXISTING	PT VARIES
103	ISOLATION BOOTH	CONC.	CPT	VINYL	GPDW	PT	EXISTING	PT VARIES
104	STUDIO A	CONC.	CPT	VINYL	GPDW	PT	EXISTING	PT VARIES
105	CONTROL ROOM B	CONC.	CPT	VINYL	GPDW	PT	GPDW	PT VARIES
106	STUDIO B	CONC.	CPT	VINYL	GPDW	PT	GPDW	PT VARIES
107	B.F. UNISEX RESTROOM	CONC.	VCT	VINYL	GPDW	PT	APG	FACT 9'-0"
108	BREAK AREA	CONC.	VCT	VINYL	GPDW	PT	APG	FACT 9'-0"
109	B.F. UNISEX RESTROOM	CONC.	VCT	VINYL	GPDW	PT	APG	FACT 9'-0"
110	CORRIDOR	CONC.	VCT	VINYL	GPDW	PT	APG	FACT 9'-0"
111	MECHANICAL ROOM	CONC.	VCT	VINYL	GPDW	PT	APG	FACT 9'-0"
112	REHEARSAL STUDIO 1	CONC.	VCT	VINYL	GPDW	PT	APG	FACT 9'-0"
113	REHEARSAL STUDIO 2	CONC.	VCT	VINYL	GPDW	PT	APG	FACT 9'-0"
114	REHEARSAL STUDIO 3	CONC.	VCT	VINYL	GPDW	PT	APG	FACT 9'-0"
115	MECHANICAL ROOM	CONC.	VCT	VINYL	GPDW	PT	EXISTING	PT VARIES
116	REHEARSAL STUDIO 4	CONC.	VCT	VINYL	GPDW	PT	APG	FACT 9'-0"
117	CLOSET	CONC.	CPT	VINYL	GPDW	PT	APG	FACT 9'-0"

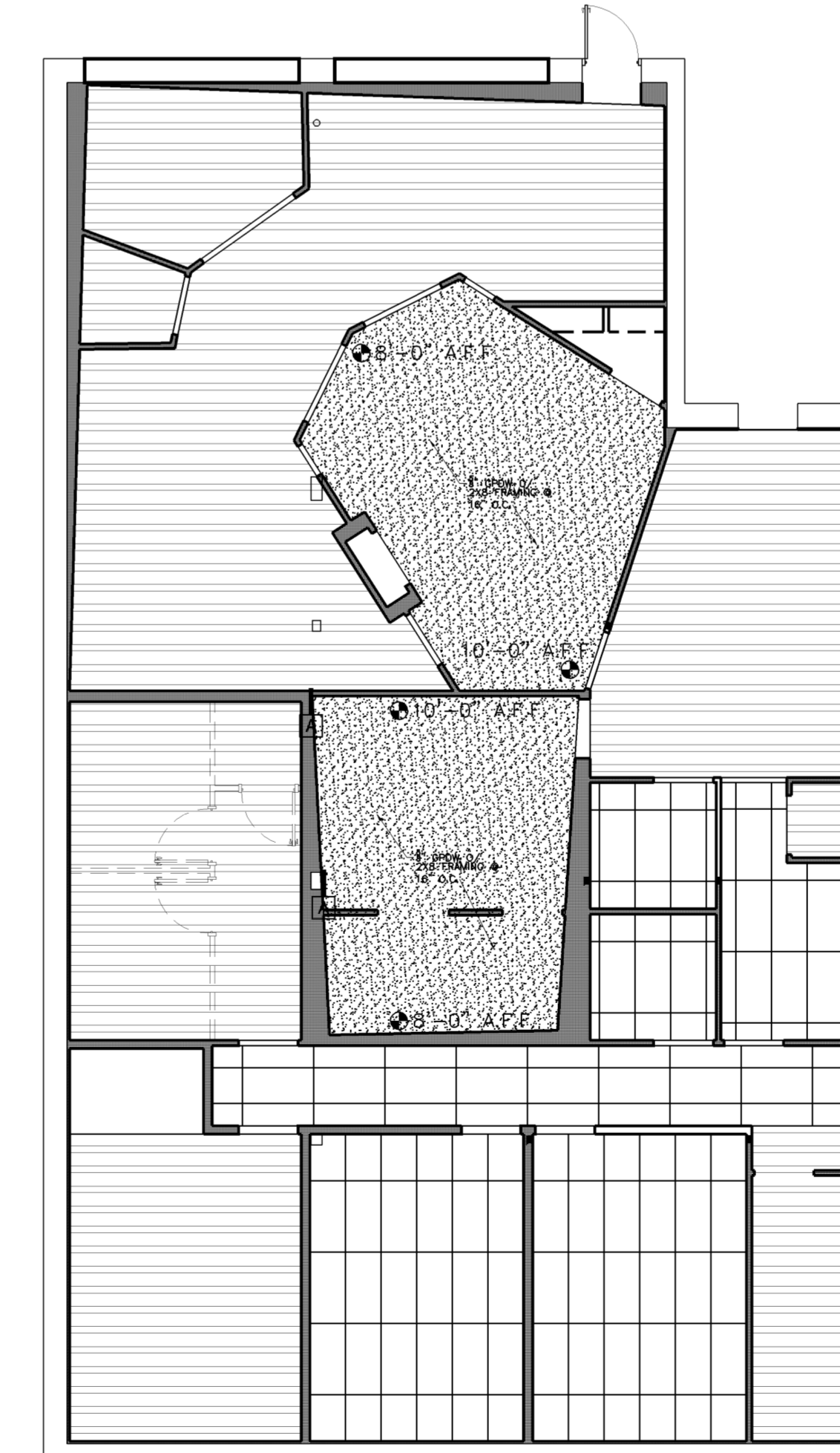
Toilet Accessory/Fixture Schedule

ITEM	DESCRIPTION	MANUF. & MODEL #	FINISH	REMARKS
A	42" GRAB BAR 1 1/2" DIAMETER STAINLESS STEEL W/ SNAP FLANGE COVER	BOBRICK #B-6806 x42 (SIDE)	STAINLESS STEEL W/ SATIN FINISH	1 1/2" CLEARANCE BETWEEN BAR & WALL. INSTALL TO SUPPORT 250 LBS.
B	36" GRAB BAR 1 1/2" DIAMETER STAINLESS STEEL W/ SNAP FLANGE COVER	BOBRICK #B-6806 x36 (REAR)	STAINLESS STEEL W/ SATIN FINISH	1 1/2" CLEARANCE BETWEEN BAR & WALL. INSTALL TO SUPPORT 250 LBS.
C	LIQUID SOAP DISPENSER SURFACE MOUNTED. CAPACITY: 40 FL. OZ.	BOBRICK #B-4112	STAINLESS STEEL W/ SATIN FINISH	
D	TOILET TISSUE DISPENSER DOUBLE ROLL	BOBRICK #B-2740	BRACKET: HEAVY DUTY ALUMINUM CASTING W/ SATIN FINISH SPINDLES (2); MOLDED & EXTRUDED ABS. EQUIPPED W/ RETRACTABLE PIN & CONCEALED LOCKING MECHANISM	THIS IS NOT A CONTROLLED DELIVERY DISPENSER
E	PAPER TOWEL DISPENSER SURFACE MOUNTED (ALL MAKES OF "C-FOLD" & MULTI-FOLD PAPER TOWELS)	BOBRICK #B-262	STAINLESS STEEL W/ SATIN FINISH	
F	FRAMELESS MIRROR		FRAMELESS	
WC-1	WATER CLOSET: (ADA COMPLIANT) AMERICAN STANDARD No. 3109.016 BOWL WITH TANK 4098.700. COMPLETE WITH COVER LOCKING DEVICE, "CADET" ELONGATED, 1.6 GPF, PRESSURE-ASSISTED SIPHON JET. FLOOR MOUNTED TANK TYPE VITREOUS CHINA WATER CLOSET. COMPLETE WITH CHIRCH No. 5334.024 SOLID PLASTIC, WHITE, OPEN FRONT SEAT WITH CHECK HINGE (WITHOUT COVER), CHINA BOLT CAPS AND POLISHED CHROME TRIP LEVER. ACCEPTABLE ALTERNATIVE MANUFACTURER - KOHLER, CRANE OR ELJER.			
LAV-1	LAVATORY: 21" DEEP ACRYLIC POLYMER LAVATORY TOP WITH BULLNOSE EDGE AND INTEGRAL BOWL. CORIAN APRON TO MATCH LAV. TOP			
EWC	ELECTRIC WATER COOLER BY ELKAY			



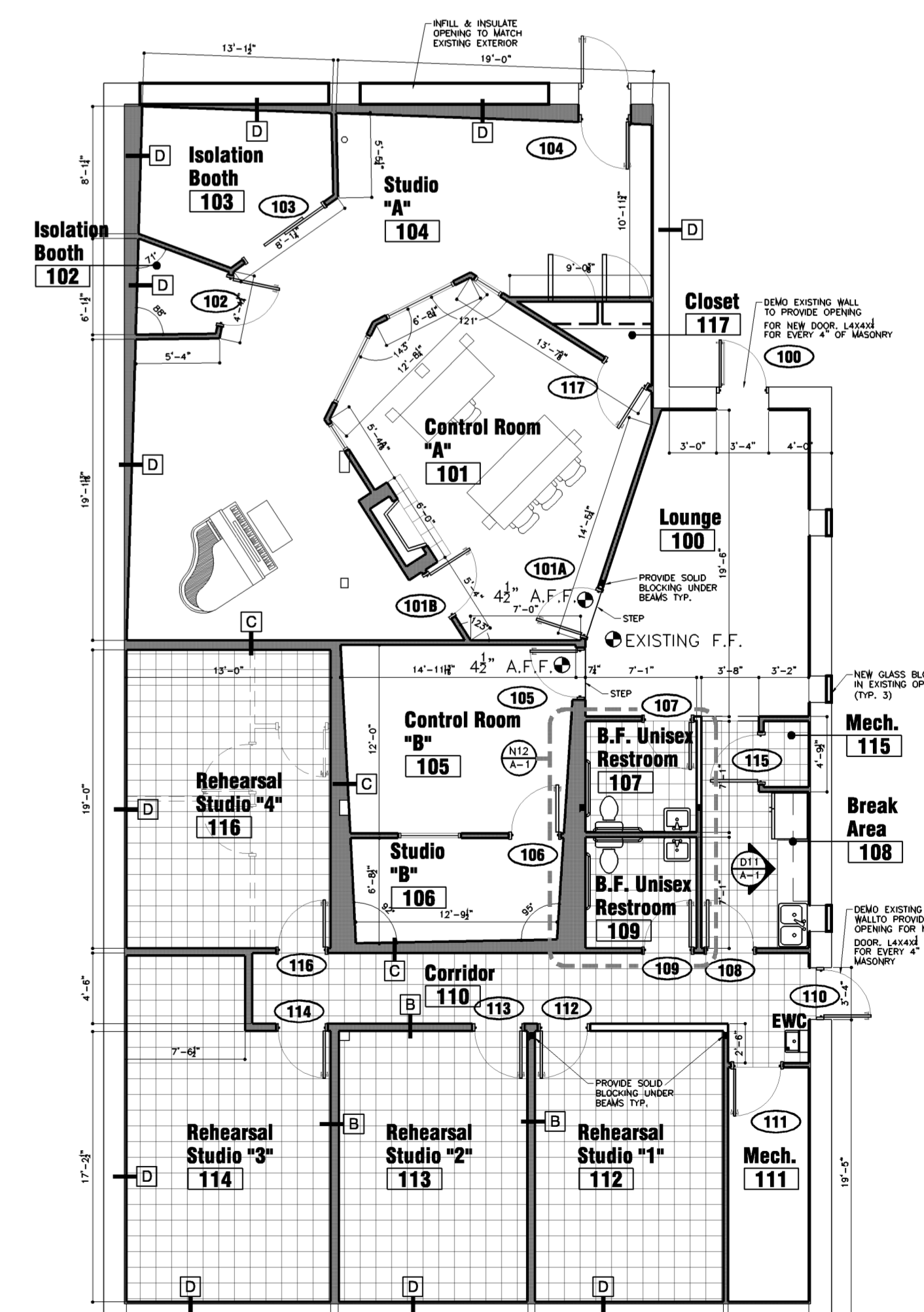
N12 Enlarged Plan

A-1 Scale: 1/4"=1'-0"



Reflected Ceiling Plan

A-1 Scale: 1/8"=1'-0"



Floor Plan

A-1 Scale: 1/8"=1'-0"