



SAN FRANCISCO, CA 94107

638 4th Street

FOR SUBLEASE

3,000 SF AVAILABLE

Fully Furnished Shared
Sublease on 4th Street -
Ideal for Teams of 5-10

TREVOR GUDIM

Executive Vice President
Email: trevor@calco-sf.com
Cell: 858.922.2632
DRE #01979980

BENNETT FALONI

Associate
Email: bennett@calcosf.com
Cell: 724.678.2851
DRE #01902075



We're Here to Help – Reach Out Today!

425 2nd St. Suite 450, San Francisco, CA 94107 | info@calcosf.com | (415) 970-0000 | calcosf.com

PROPERTY SUMMARY

| 638 4th St.

AVAILABLE SPACE | 1,000 - 3,000 Square Feet

RENTAL RATE | \$7,000 - 10,000 / Month Full Service

SUBLEASE TERM | Flexible 4-12 Month Terms

AVAILABLE | Immediately

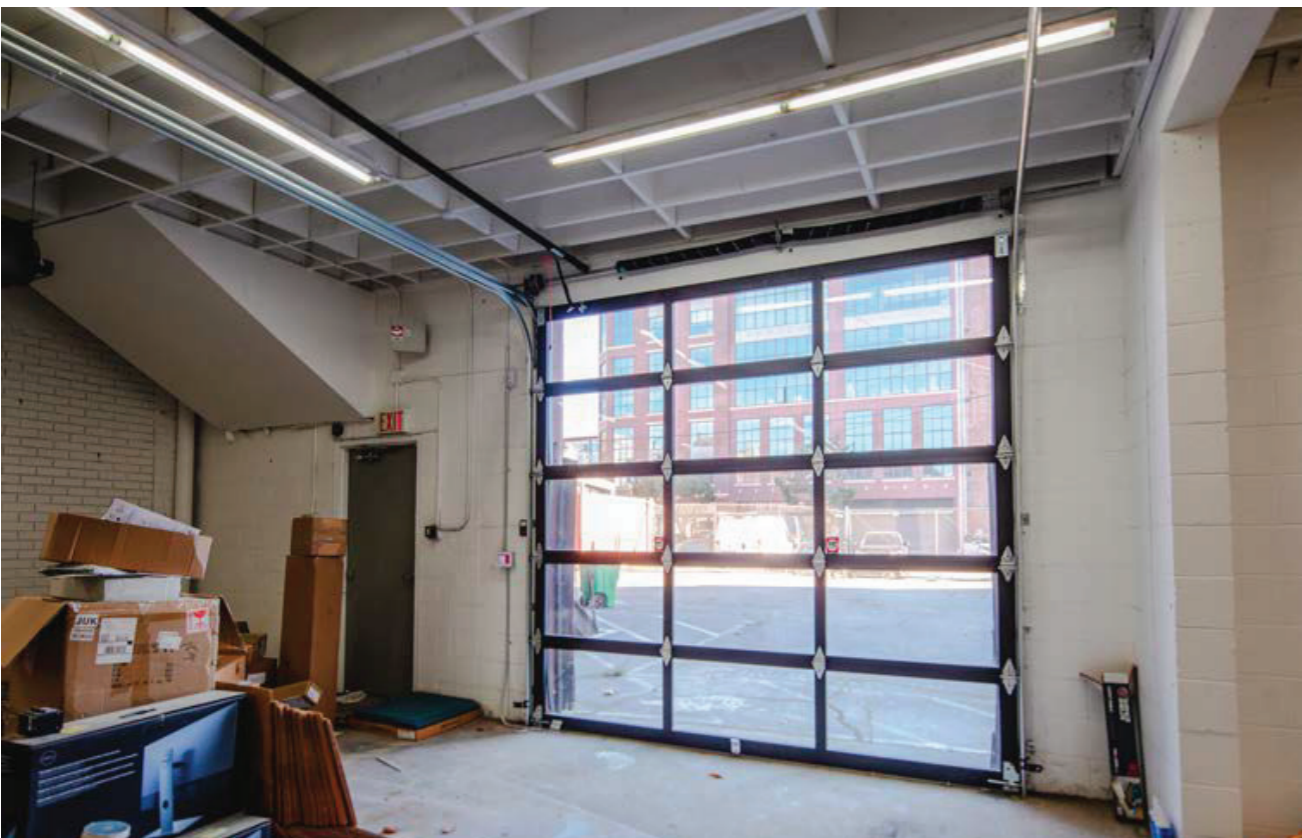
BUILDING ATTRIBUTES

- Well Located Plug & Play Flex/Office Space
- Access to one or two (1 or 2) Secure Parking Spaces
- Drive-In Roll Up Door/Loading Area
- One or Two (1 or 2) Glass Conference Rooms
- Access to one or two (1 or 2) Phone Booths
- Renovated Kitchen & Dining Area
- Fully Furnished
- Steps Away from Caltrain, Muni and Many Neighborhood Amenities



GALLERY
| 638 4th St.

CALCO
COMMERCIAL, INC.



GALLERY

| 638 4th St.



LOCATION OVERVIEW

| 638 4th St.

Desirable South of Market location, walkable to nearby amenities and to surrounding neighborhoods.



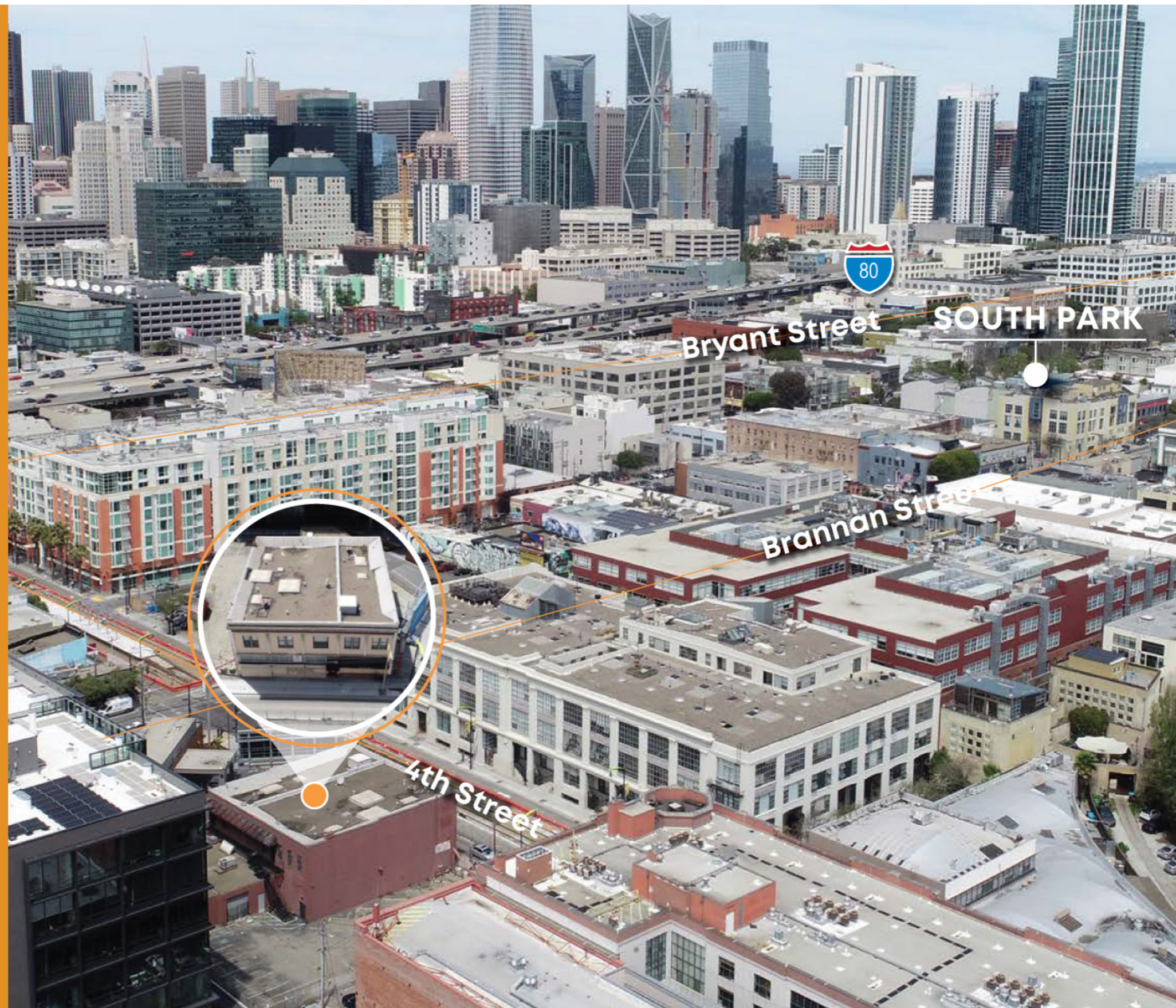
03 MIN to 4th St. Caltrain
04 MIN to 4th & King Muni
23 MIN to Powell St. BART



04 MIN to Mission Bay
10 MIN to Union Square
12 MIN to Financial District



03 MIN to 280 On-Ramp
04 MIN to 80 On-Ramp
06 MIN to 101 On-Ramp



NEARBY AMENITIES

| 638 4th St.

- 1 Marlowe
- 2 Alexander's Steakhouse
- 3 Brickhouse
- 4 Steep
- 5 Shell Gas Station
- 6 The Hotel Utah Saloon
- 7 Local Tap
- 8 Black Hammer Brewing
- 9 Thriller Social Club
- 10 Little Skillet
- 11 Alchemist Bar & Lounge
- 12 Flour & Branch
- 13 Lava Restaurant & Lounge
- 14 Whole Foods Market
- 15 The UPS Store
- 16 Walgreens
- 17 Safeway
- 18 Gus's Community Market
- 19 Lucky Strike SF
- 20 Oracle Park
- 21 Caffe Centro
- 22 Colombo's
- 23 SF Flower Mart
- 24 All Star Donuts
- 25 Golden Goat Coffee
- 26 SF Flower Mart
- 27 Hakashi Japanese Sushi Bar
- 28 Town's End Brunch



NEARBY AMENITIES

| 638 4th St.



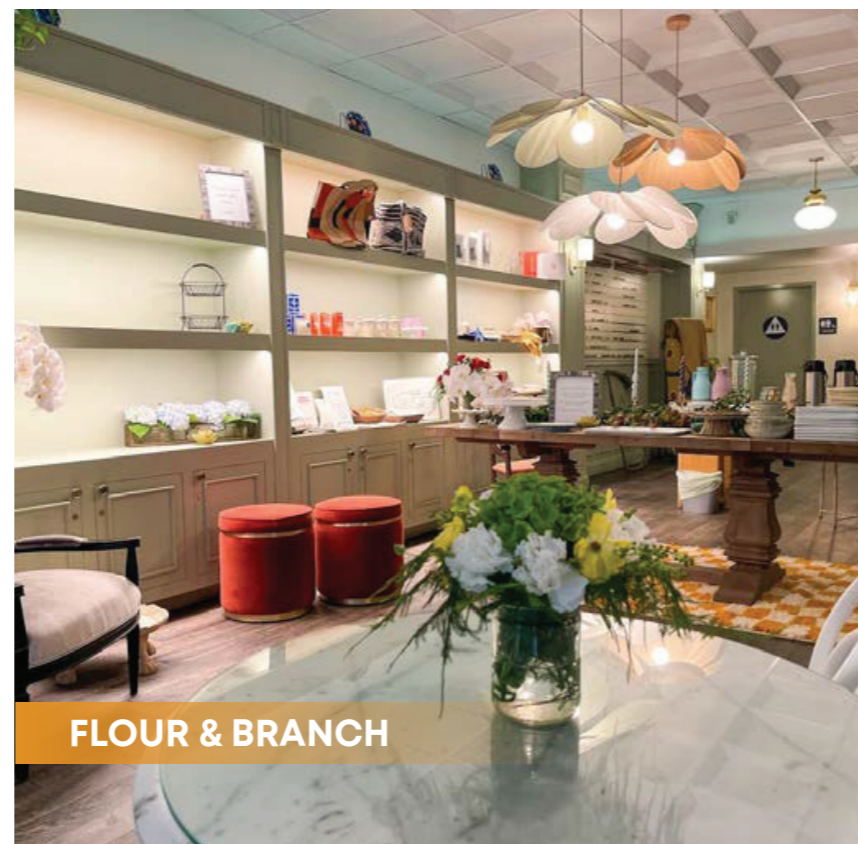
MARLOWE



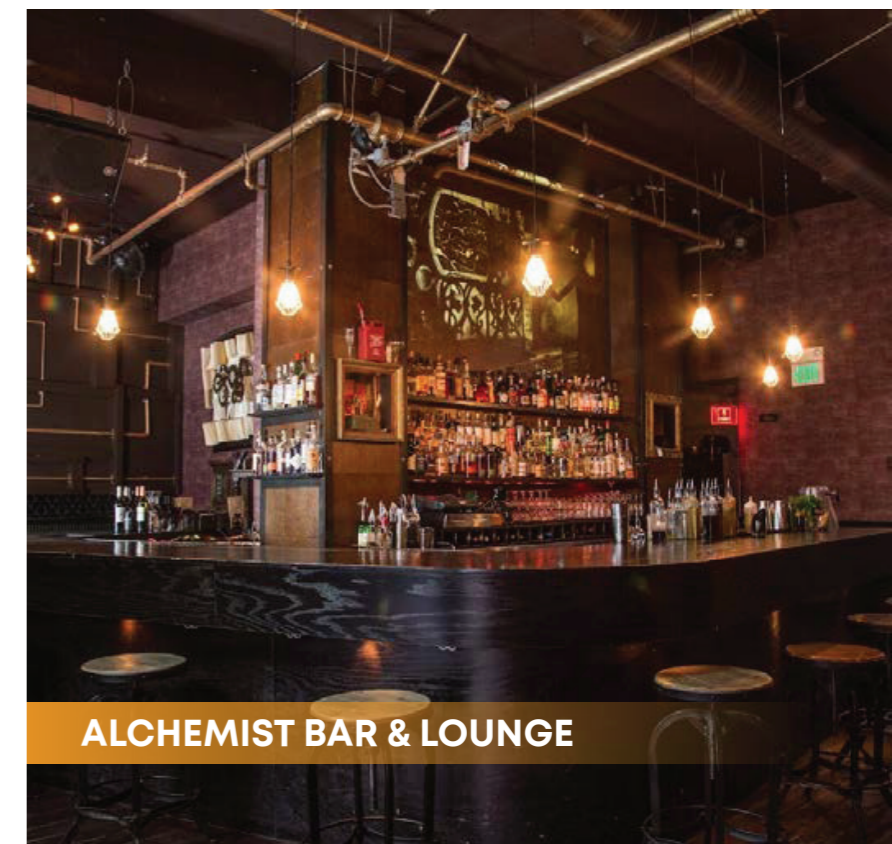
ALEXANDER'S STEAKHOUSE



LITTLE SKILLET



FLOUR & BRANCH



ALCHEMIST BAR & LOUNGE



TREVOR GUDIM

Executive Vice President
Email: trevor@calco-sf.com
Cell: 858.922.2632
DRE #01979980

BENNETT FALONI

Associate
Email: bennett@calcosf.com
Cell: 724.678.2851
DRE #01902075

PIONEERING REAL ESTATE SOLUTIONS WITH PROVEN EXPERTISE

Calco Commercial, founded in 2011 by Scott Mason, brings over 35 years of experience and 2,500+ transactions, totaling over \$2.2 billion in sales and leases. Specializing in leasing and sales of commercial real estate in the San Francisco Bay Area and nationwide, we consistently rank as a top-producing firm. With deep knowledge of the Bay Area market, our team offers clients over three decades of expertise and exceptional customer service, providing the tools and guidance to navigate the ever-changing commercial real estate landscape.