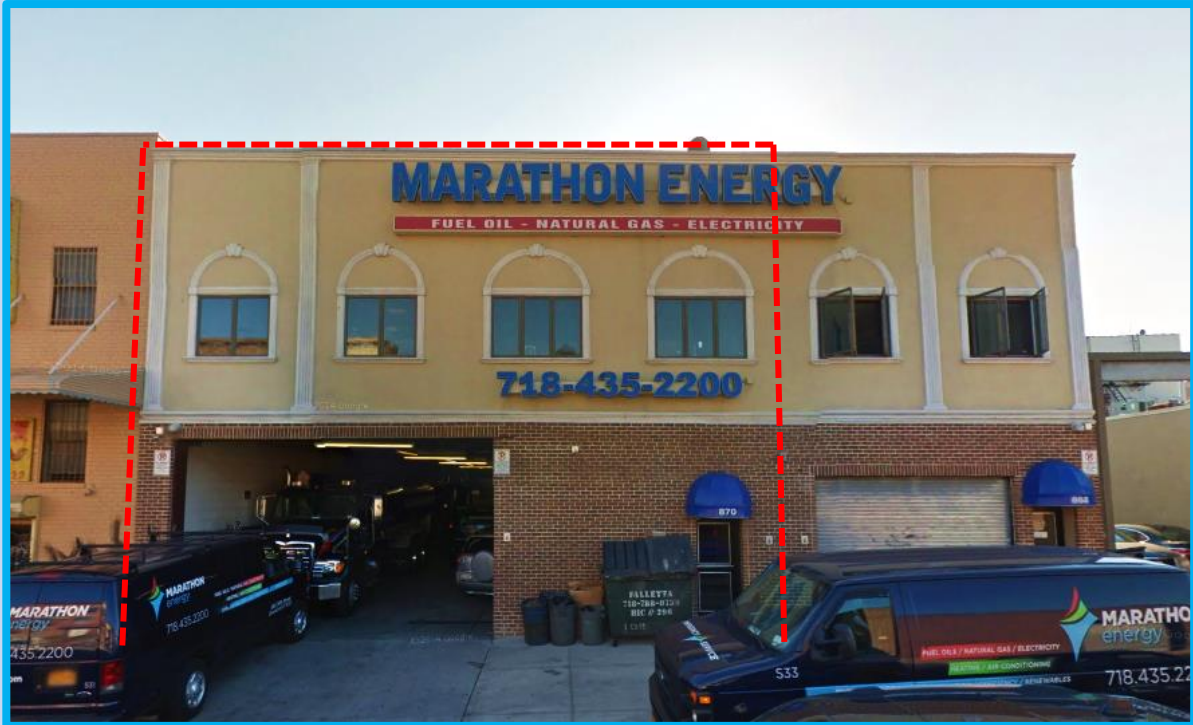


868 39th Street, Brooklyn, N.Y. 11232



Commercial Spaces Available for Lease

- Location:** Sunset Park, N.Y. (11232)
- Cross Streets:** Between 8th Avenue & 9th Avenue
- Space Dimensions:**
- 1) 1st Floor Warehouse Space – 40 x 95 / 3,800 SF
 - 2) 2nd Floor Office Space – 40 x 68 / 2,680 SF
- Price:**
- 1) Warehouse Space - \$20/SF
 - 2) Office Space - \$35/SF
- Notes:**
- *Spaces Being Leased Separately
 - *Warehouse Includes Drive-In Door, Camera Security System & 12 Ft. Ceiling Heights & is in Great Condition
 - *Office Space is in Beautiful, Move-in Condition. Includes Desks & Furniture
 - *Less than 400 Feet from the D Train
 - *Easy Access to the B35, B70 Bus Routes

For more information please call:
Simon Freud (718) 256-9595 Ext. 117 / (347) 786-4469 or Email: simonfreud@eretzltd.com

**870 39th Street
Brooklyn, N.Y. 11232**

