

FOR SUBLEASE
± 6,600 RSF

2201 PARK PL EL SEGUNDO

INDU
STRY

INDUSTRYPARTNERS.COM
310.395.5151
CA BRE No. 01900833

TRAVIS LANDRUM
tl@industrypartners.com
CA BRE No. 01435827

AVAILABLE RSF

±6,600 RSF

RATE

\$3.75 / SF per Mo. / MG

TERM

Thru Feb 29, 2028

OCCUPANCY

30 days following lease execution

PARKING

3 Spaces per 1,000 SF at prevailing rates

Move-in Ready Flex Space in Prime El Segundo Location**FEATURES**

Clean, modern flex space with polished concrete floors and exposed ceilings

Abundant natural light with large windows throughout

Flexible layout with a mix of open workspace and private offices

Roll-up door access, ideal for loading, production, or creative staging

Landscaped surroundings with appealing curb appeal

HVAC-equipped for year-round comfort

Private restrooms

Wired for internet and power, plug-and-play ready

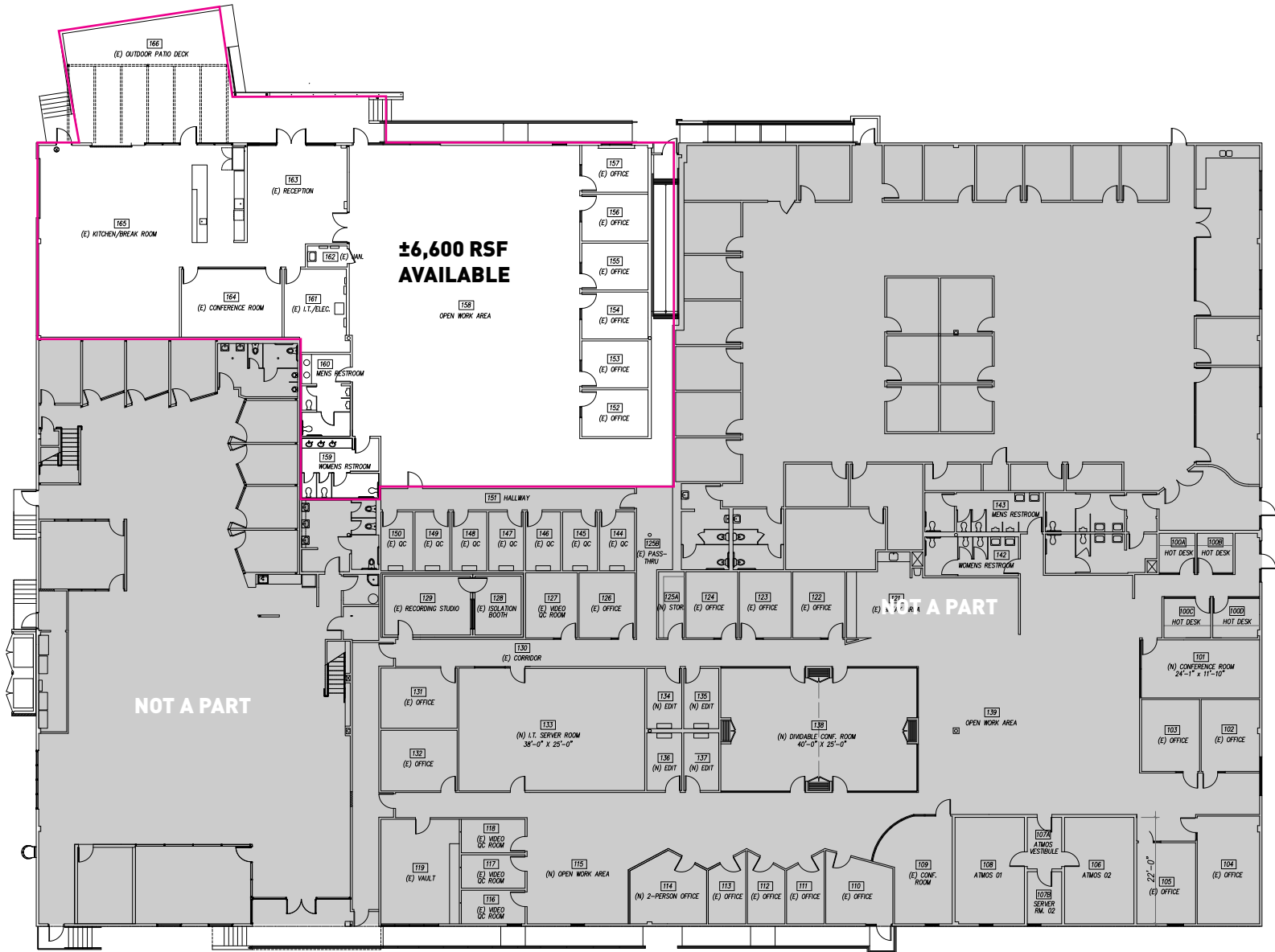
Prime El Segundo location, minutes from LAX, 105/405 Freeways, and local retail

Immediate occupancy available

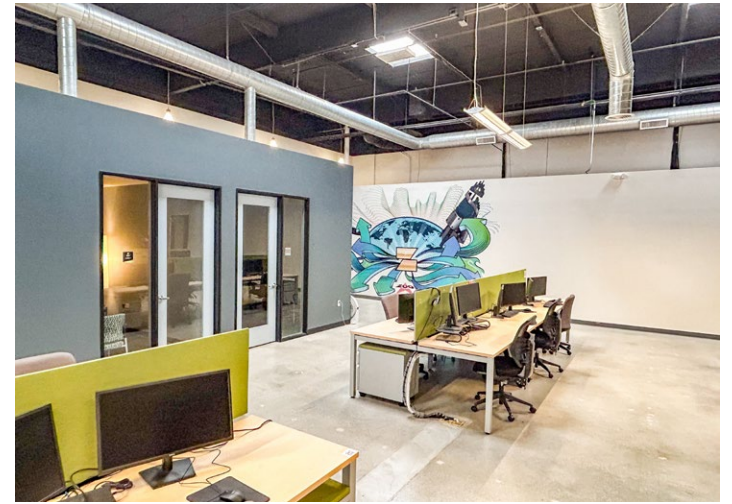


No warranty or representation is made to the accuracy of the foregoing information. Terms of sale or lease are subject to change or withdrawal without notice.
©2025 INDUSTRY PARTNERS, INC.

±6,600 RSF



NOT TO SCALE.
Floor plan for information purposes only.
Layout and furnishings may vary





About the Neighborhood

El Segundo is a vibrant coastal city in Los Angeles County known for its thriving business community, proximity to LAX, and a unique mix of Fortune 500 companies, creative firms, and aerospace leaders. With a walkable downtown, excellent dining, and easy access to freeways and transit, El Segundo offers the perfect blend of work and lifestyle.

No warranty or representation is made to the accuracy of the foregoing information. Terms of sale or lease are subject to change or withdrawal without notice. ©2020 INDUSTRY PARTNERS, INC.

