

FOR  
LEASE



## 505 S TOWER AVE CENTRALIA, WA 98531

**LOCATION:** 505 S. Tower Avenue  
Centralia, WA 98531

**LEASE RATE:** \$12.00 per square foot

**BUILDING SIZE:** Approximately 7,056 square feet

**TENANTS:** D&S Enterprises (Fuller's Market Basket grocery store)

**TYPE OF LEASE:** Triple Net Lease. Tenant pays utilities (electric, heat, a/c), interior/exterior maintenance, property taxes, fire insurance and janitorial.



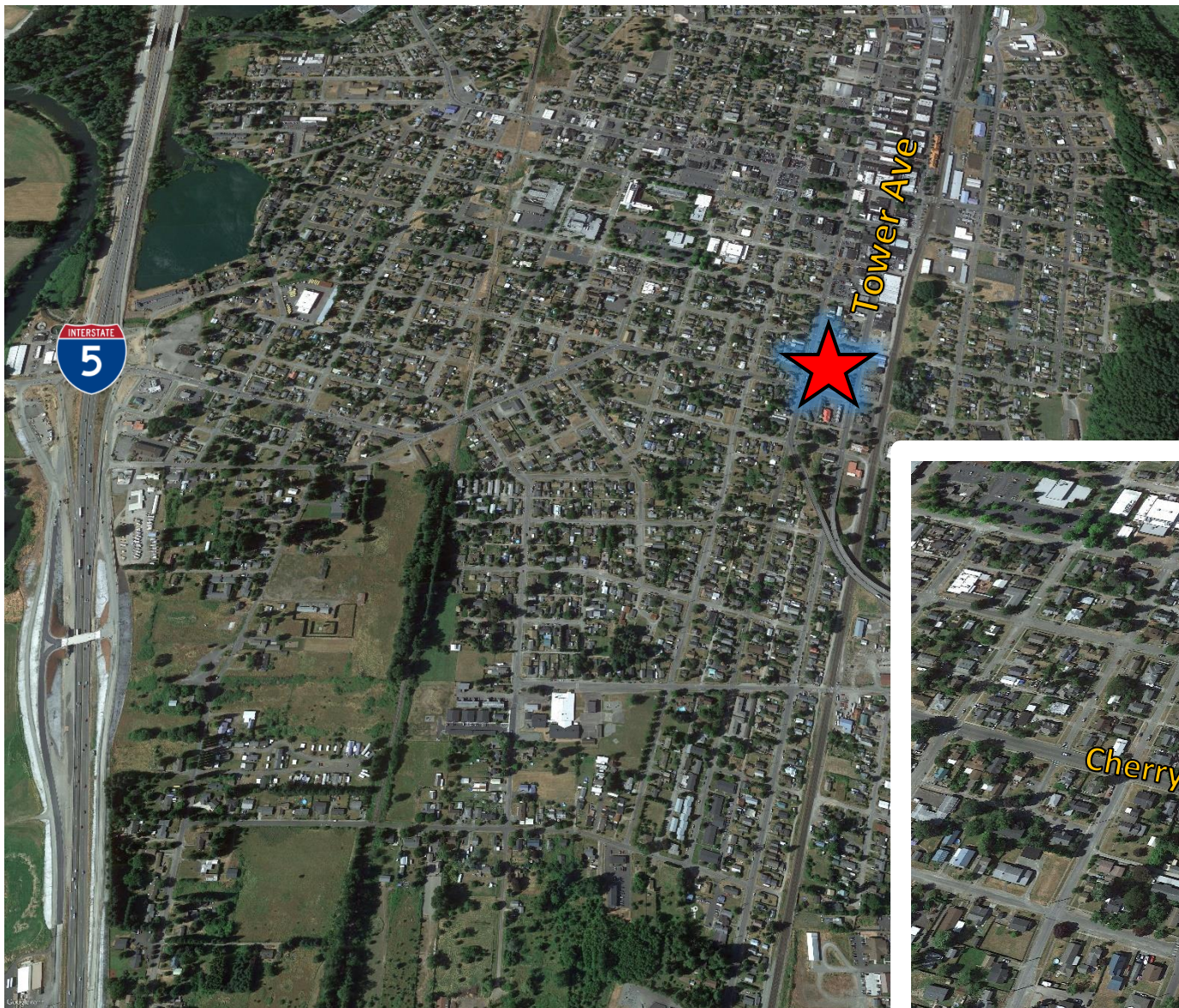
**For more info Contact:**

Eric Fuller | [efuller@ef-inc.com](mailto:efuller@ef-inc.com)  
360.597.0564

KC Fuller | [kfuller@ef-inc.com](mailto:kfuller@ef-inc.com)  
360.597.0569



900 Washington Street, Suite 850  
Vancouver, WA 98660  
360-750-5595  
[www.ericfullerinc.com](http://www.ericfullerinc.com)



# 505 S TOWER AVE

CENTRALIA, WA 98531



Eric Fuller, CCIM | 360.597.0564 | [efuller@ef-inc.com](mailto:efuller@ef-inc.com)

KC Fuller | 360.597.0569 | [efuller@ef-inc.com](mailto:efuller@ef-inc.com)