

# Spaces Available for Lease

6305 Cambridge St, St. Louis Park, MN 55416

## Units Available:

215 – 545 SqFt

225 – 688 SqFt

121 – 1,896 SqFt



## Features:

- Small Warehouse space great for start-ups
- Month to Month Leases
- Building and grounds maintained and managed by local owner
- 300, 500, 700, 1,000 and 2,000 SqFt units
- Access to ample shared parking
- Shared bathroom for building
- 

*Please call to arrange a private viewing*

Harrison Smith, Broker

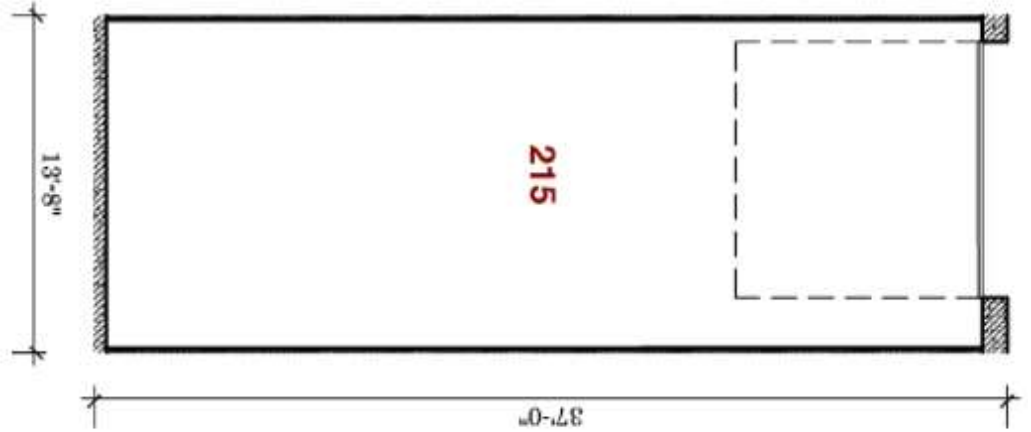
**952-929-8825**

[www.rentspace.com](http://www.rentspace.com)

# Industrial / Warehouse Space

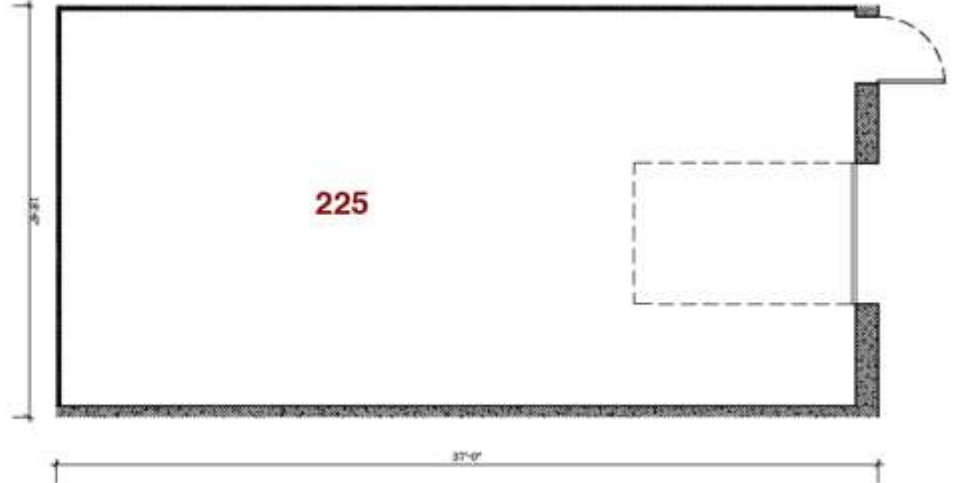
## Available Now

<b>CBC2 - 215</b>	
Size	37'x13.8'
Total Sq. Ft.	511 sq. ft.
Service	g,w,e 20amp
Warehouse	511 sq. ft.
Restroom	Common
Drive In	1-12'x12'
Dock	
Ceiling Ht.	13'

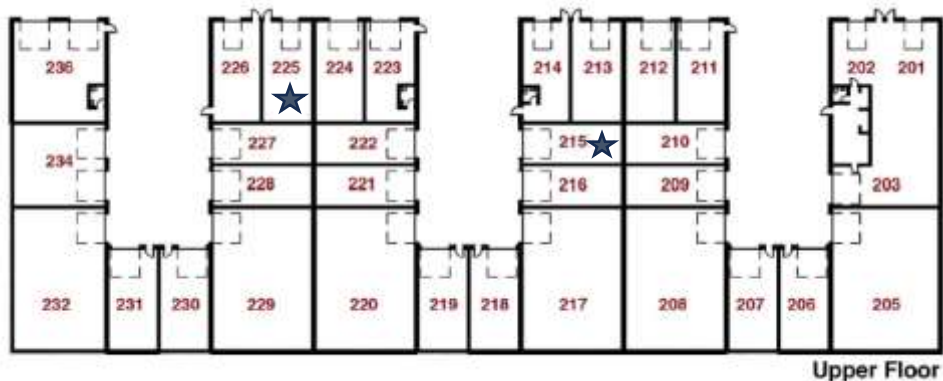


## Available August 1, 2026

<b>CBC2 - 225</b>	
Size	18.6'x37'
Total Sq. Ft.	688 sq. ft.
Service	g,e 20amp
Warehouse	688 sq. ft.
Service Door	1
Drive In	1-8'x10'
Dock	
Ceiling Ht.	13'



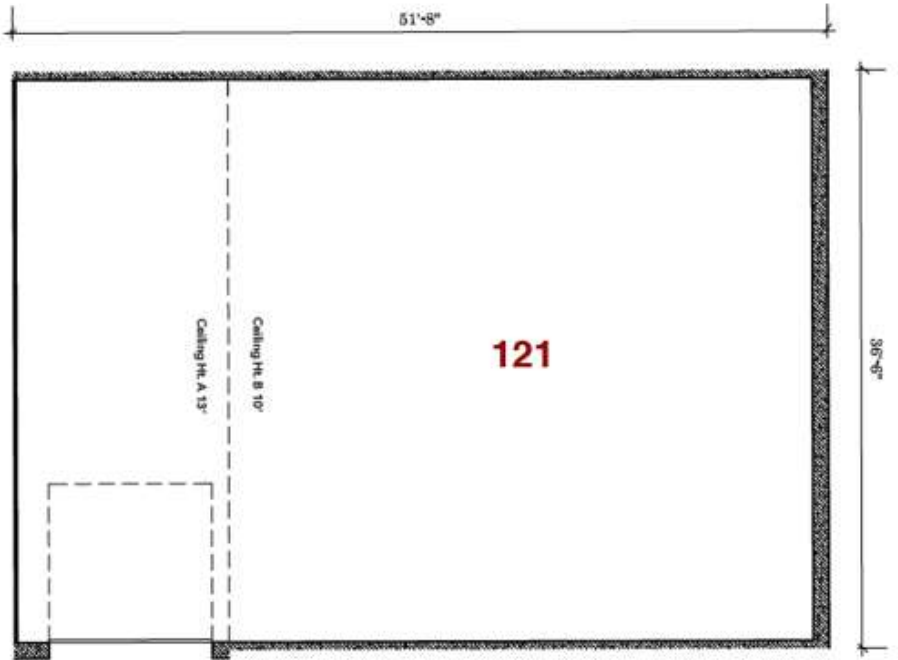
## Building Layout



# Industrial/Warehouse Space

Available Now

<b>CBC2 - 121</b>	
<b>Size</b>	51.8'x36.6'
<b>Total Sq. Ft.</b>	1,892 sq. ft.
<b>Service</b>	g,e 20amp
<b>Warehouse</b>	1,892 sq. ft.
<b>Restroom</b>	Common
<b>Floor Drain</b>	1
<b>Drive In</b>	1-12'x12'
<b>Dock</b>	
<b>Ceiling Ht.-1</b>	13' (14'x36.6')
<b>Ceiling Ht.-2</b>	10' (37.8'x36.6')



## Building Layout

