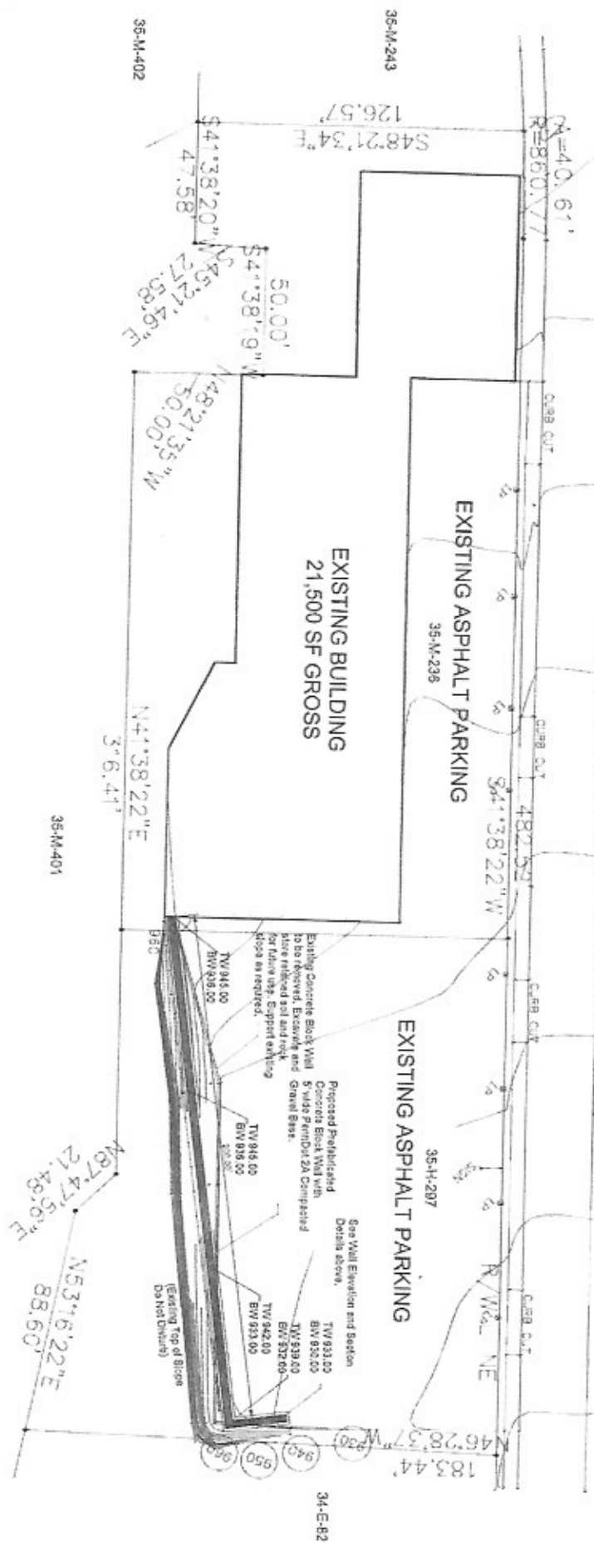


ZONING DATA	
COMMERCIAL (MC)	MINIMUM SETBACK
MAXIMUM BUILDING COVERAGE	MAXIMUM BUILDING HEIGHT
MAXIMUM BUILDING HEIGHT	REAR YARD
SIDE YARD	CAR SALES ALLOWED

UTILITY PROVIDERS:
ELECTRIC - DOMINION LIGHT CO 888-682-7100
GAS - COLUMBIA GAS CO 888-464-4332
WATER - PITTSBURGH WATER AND SEWER AUTHORITY
SEWER - PITTSBURGH WATER AND SEWER AUTHORITY
SOLID WASTE - CITY OF PITTSBURGH

PROPOSED SITE DATA:
TOTAL LOT AREA - .76 AC ± 175 ACRE
EXISTING BUILDING GROSS AREA - 21,500 SF
EXISTING LOT COVERAGE * 28%
EXISTING PARKING 75 SPACES



NO.	DATE	DESCRIPTION	BY	CHK
1	10/15/23	CONCEPT PLAN	AK	AK
2	10/15/23	PRELIMINARY RETAINING WALL	AK	AK
3	10/15/23	REVISIONS TO CONCEPT PLAN	AK	AK
4	10/15/23	REVISIONS TO PRELIMINARY RETAINING WALL	AK	AK
5	10/15/23	REVISIONS TO CONCEPT PLAN	AK	AK
6	10/15/23	REVISIONS TO PRELIMINARY RETAINING WALL	AK	AK
7	10/15/23	REVISIONS TO CONCEPT PLAN	AK	AK
8	10/15/23	REVISIONS TO PRELIMINARY RETAINING WALL	AK	AK

PREPARED BY	REVISION
Civil and Environmental Technologies LLC 101 North Meadows Drive Suite 134 Westford, PA 15090 724-758-7340	PROPOSED RETAINING WALL 1501 WEST LIBERTY AVENUE PITTSBURGH, PA
	WEST LIBERTY DEVELOPMENT COMPANY 2605 WASHINGTON ROAD CAMONSBURG, PA 15917

PROJECT NO.	SCALE
SP-1 Construction Plan 1 OF 1	1/4" = 20'