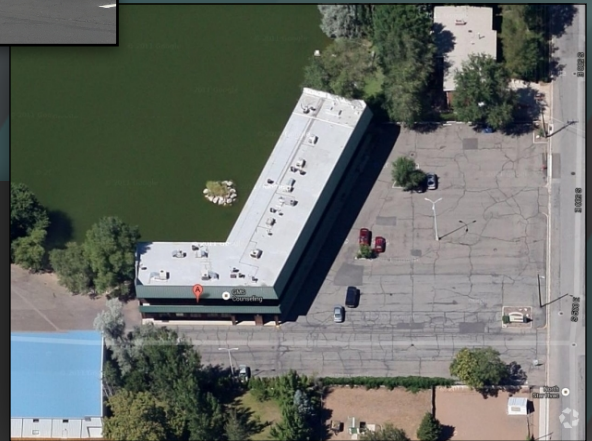


Lakeside Plaza

370 S 500 E - Clearfield, UT 84015



Asking - \$1,000,000

- Great Investment Opportunity
- Close to Freeway & Main Street
- 1.5 Acres
- Tremendous Upside Potential
- 82% Occupied
- Cap Rate 8.1%
- Tranquil Pond Setting - City Maintained
- \$53per Sq Ft
- Sq Ft: 19613
- Rentable Sq Ft: 18993
- Lot Size: 1.5 Acres
- 16 Units
- Year Built: 1985
- Unit Sizes: 840 sq ft - 2520 sq ft
- Zoning C-2
- Parking 5.7/1000 Ratio



*Great Value - Add
Investment
Opportunity !!*

Christie Daugherty, CCIM
Exit Realty Success
Commercial
Realtor, License #: 8650059
1231 West 9000 South
Suite E
West Jordan, UT 84088
Office: 801- 889-8644
Cell: 702- 400 1022
christiedaugherty@gmail.com
MLS# 19864719

