

1 Marylebone High Street
London W1U 4LZ
T 020 7009 2300
F 020 7009 2311
office@edwardcharles.co.uk
www.edwardcharles.co.uk

**EDWARD CHARLES
& PARTNERS W1**
CHARTERED SURVEYORS

50 GROSVENOR STREET | MAYFAIR | W1

Refurbished 2nd Floor Office to Let
1,241 sq ft + access to shared terrace



Location

50 Grosvenor Street is an internationally recognised address in the heart of Mayfair imbuing its residing businesses with credibility and prestige. A short walk from Bond Street Underground Station which is served by the Central and Jubilee lines providing excellent communication throughout Central London. A moment's walk to Grosvenor and Berkeley Square provides a refreshing outdoor respite and an opportunity to sample the numerous world class retailers in the immediate vicinity.

Description

50 Grosvenor Street is a Grade II Listed Georgian building which has been substantially refurbished to provide offices of the highest quality; commensurate with the requirements of leading business occupiers. **The building features a generous sized reception area with commissionaire and features a shared landscaped roof terrace at 2nd floor level.**

Accommodation & Outgoings

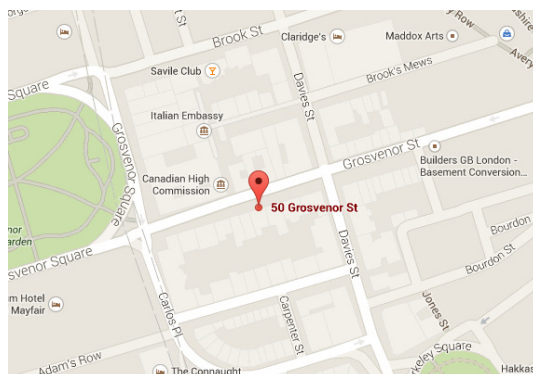
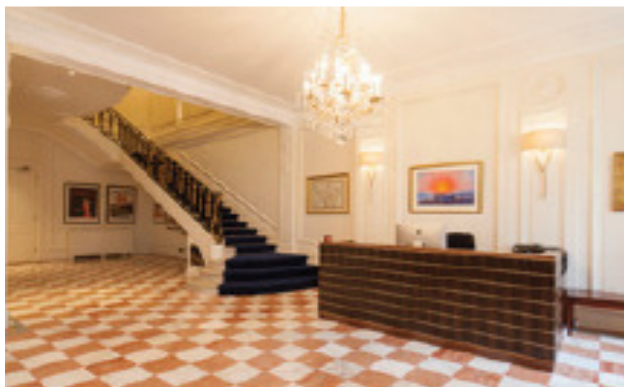
Floor	Area (sq ft)	Area (sq m)	Rent (psf)	Rates (est)	SC (psf)	Status
2 nd	1,241	115	£POA	£39.00	£17.50	Available

Amenities

- * Newly redecorated & recarpeted
- * Building reception with commissionaire
- * Air conditioning
- * Data and power cabling pre-installed
- * LG7 compliant lighting
- * Fitted kitchenette
- * Communal roof terrace
- * WC's
- * Showers
- * Cycle storage

Term

New lease direct from the landlord for a term to be agreed.



Viewings through sole letting agents:

Edward Charles & Partners

Jamie Shuttle
020 7009 2306
jshuttle@edwardcharles.co.uk

Katie Dart
020 7009 2321
kdart@edwardcharles.co.uk

Sean Cunningham
020 7009 2310
scunningham@edwardcharles.co.uk