

4250-4280 HAGGERTY ROAD
CANTON, MICHIGAN

INDUSTRIAL FOR SUBLEASE
215,604 Square Feet Available



**SIGNATURE
ASSOCIATES**
KNOW SIGNATURE | KNOW RESULTS



PROPERTY FEATURES

- 215,604 square feet available
- 12,770 square feet of office space
- 27' clear height
- (10) 12x14 grade level doors, (38) docks
- Zoned LI-2
- Located on 16.63 acres
- 295 parking spaces and 77 trailer parking spaces
- Premier corporate image building just ¼ mile west of I-275 at Michigan Avenue exit
- Building features include extensive trailer parking, ESFR fire suppression
- 2,000 amps, 227/480 volts, 3-phase power
- Lease Rate: \$6.45/sq. ft. NNN



For more information, please contact:

STEVE GORDON
(248) 948 0101
sgordon@signatureassociates.com

JOHN BOYD
(248) 948 0102
jboyd@signatureassociates.com

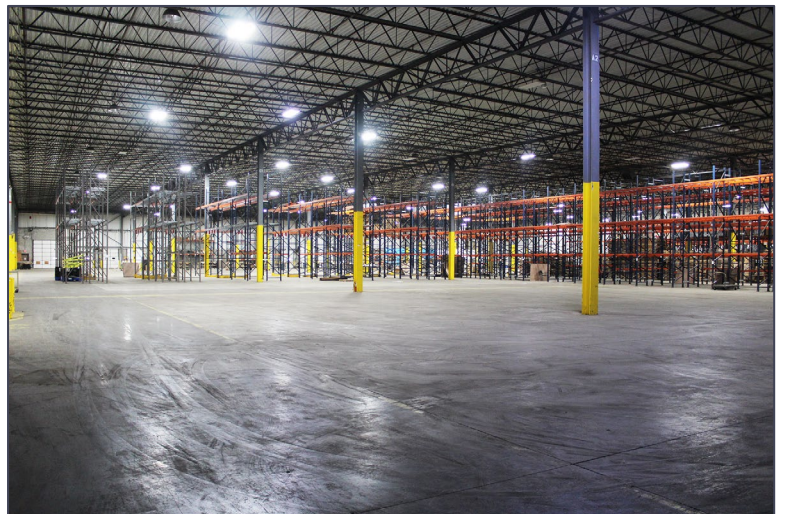
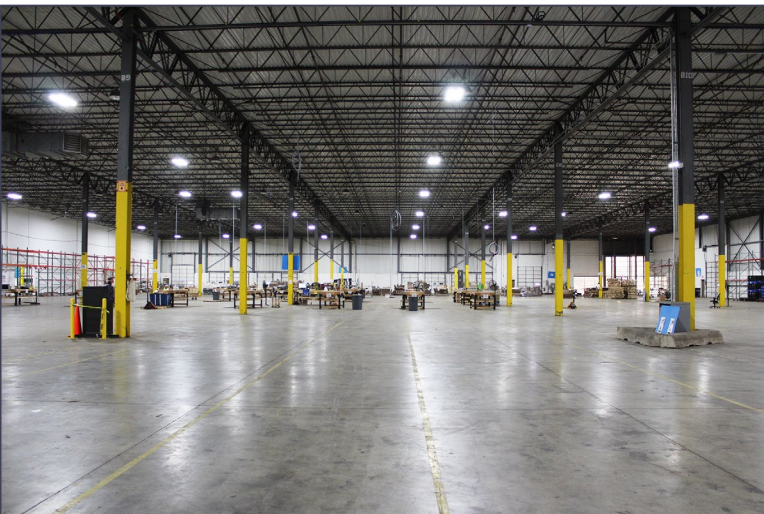
SIGNATURE ASSOCIATES
One Towne Square, Suite 1200
Southfield, MI 48076
www.signatureassociates.com

4250-4280 Haggerty Road – Canton, Michigan

Industrial For Sublease

215,604
Square Feet
AVAILABLE

Additional Images



For more information, please contact:

STEVE GORDON
(248) 948 0101
sgordon@signatureassociates.com

JOHN BOYD
(248) 948 0102
jboyd@signatureassociates.com

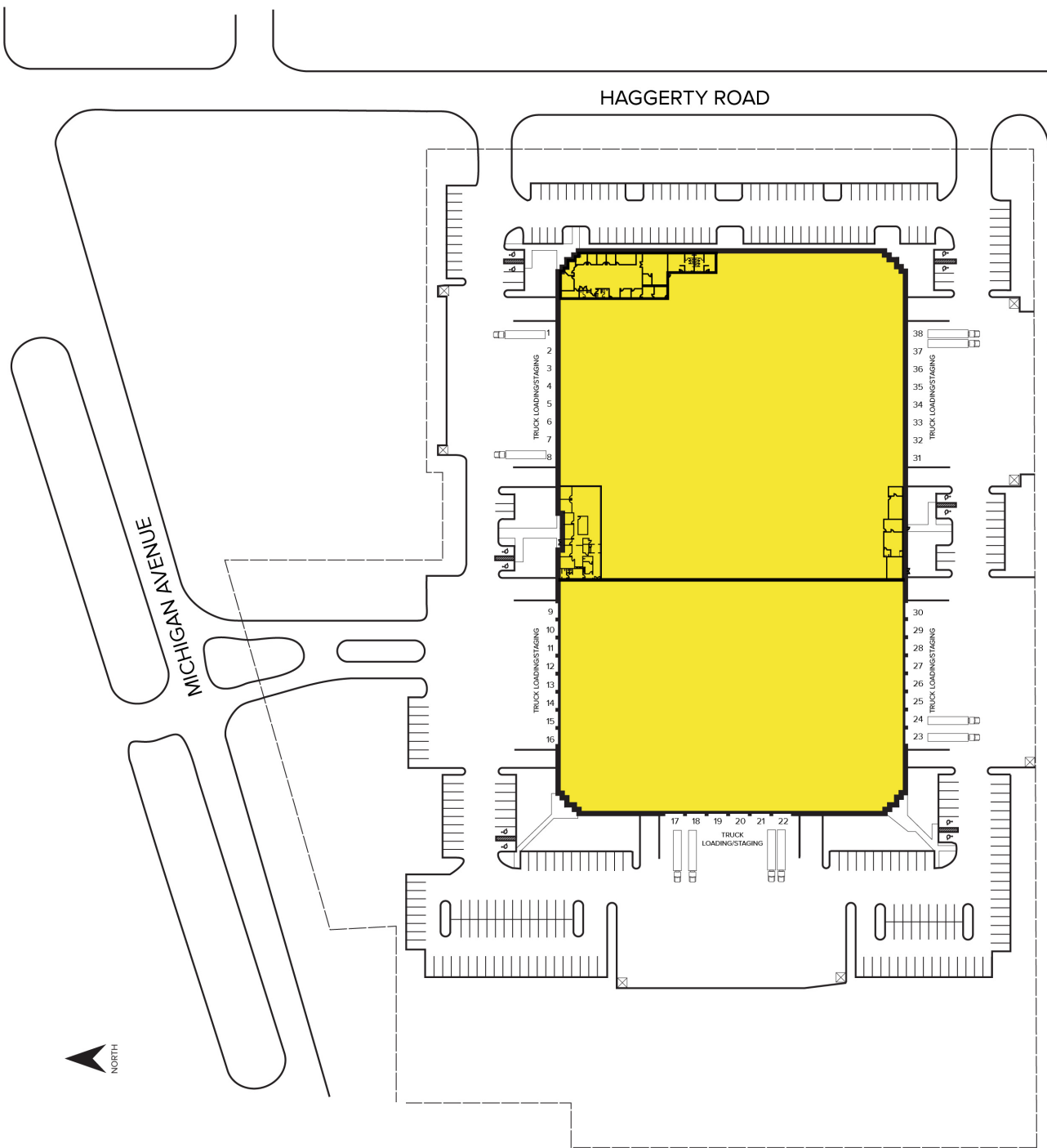
SIGNATURE ASSOCIATES
One Towne Square, Suite 1200
Southfield, MI 48076
www.signatureassociates.com

4250-4280 Haggerty Road – Canton, Michigan

Industrial For Sublease

215,604
Square Feet
AVAILABLE

Site Plan



For more information, please contact:

STEVE GORDON
(248) 948 0101
sgordon@signatureassociates.com

JOHN BOYD
(248) 948 0102
jboyd@signatureassociates.com

SIGNATURE ASSOCIATES
One Towne Square, Suite 1200
Southfield, MI 48076
www.signatureassociates.com

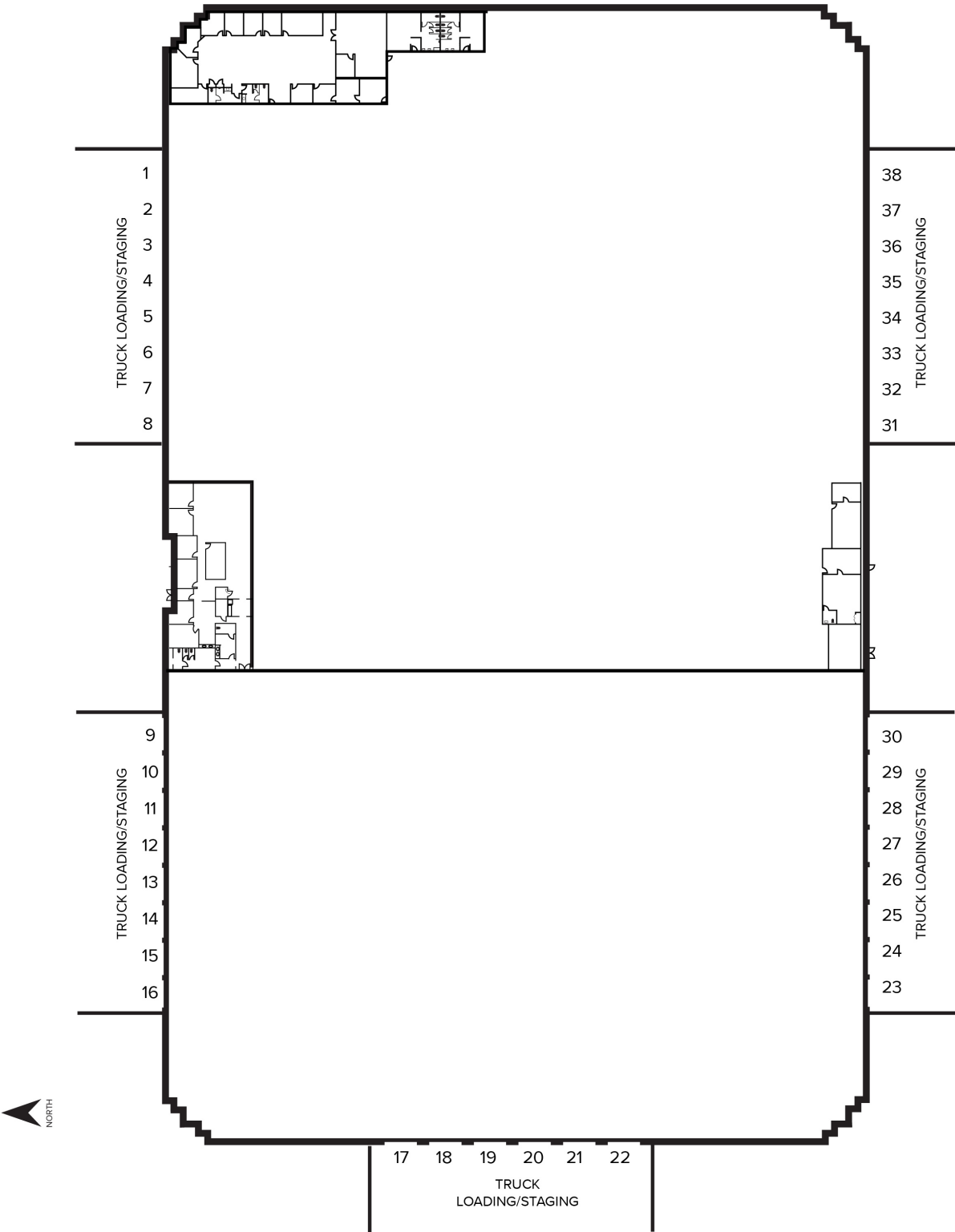
Information is subject to verification and no liability for errors or omissions is assumed. Price is subject to change and listing withdrawal.

4250-4280 Haggerty Road – Canton, Michigan

Industrial For Sublease

215,604
Square Feet
AVAILABLE

Floor Plan



For more information, please contact:

STEVE GORDON
(248) 948 0101
sgordon@signatureassociates.com

JOHN BOYD
(248) 948 0102
jboyd@signatureassociates.com

SIGNATURE ASSOCIATES
One Towne Square, Suite 1200
Southfield, MI 48076
www.signatureassociates.com

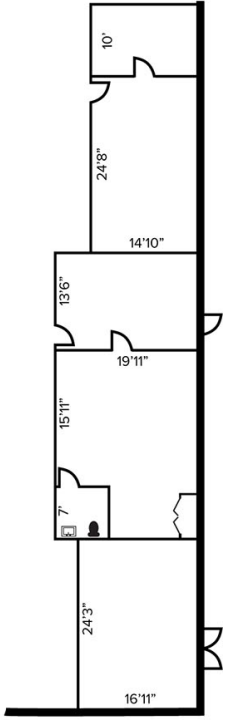
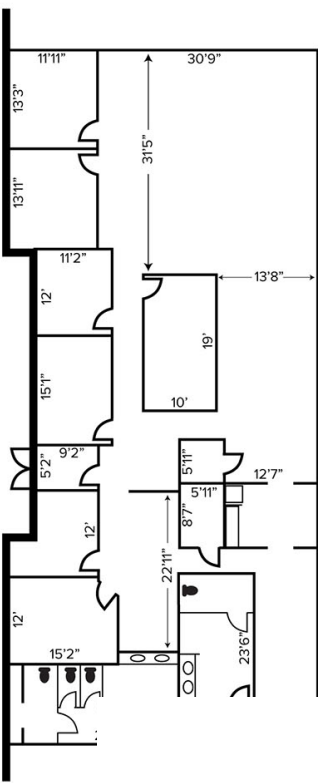
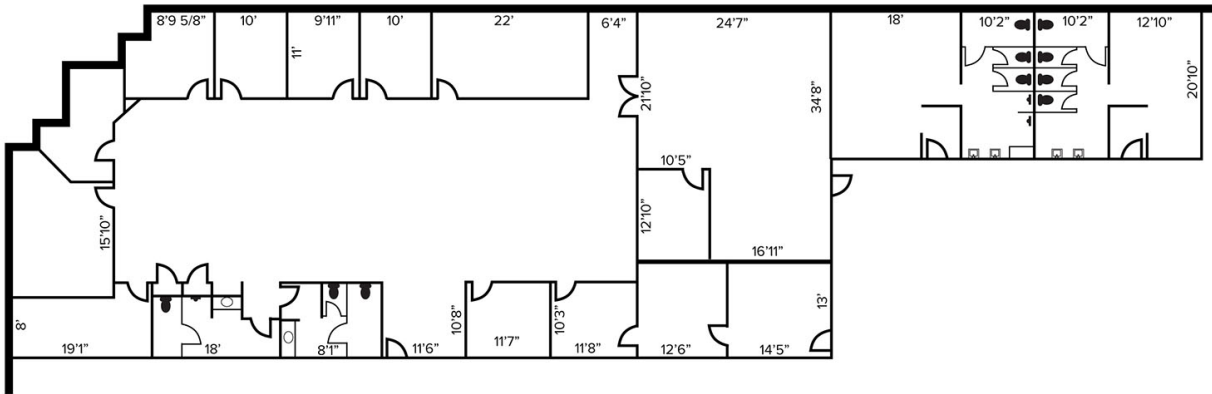
Information is subject to verification and no liability for errors or omissions is assumed. Price is subject to change and listing withdrawal.

4250-4280 Haggerty Road – Canton, Michigan

Industrial For Sublease

215,604
Square Feet
AVAILABLE

Office Floor Plans



For more information, please contact:

STEVE GORDON
(248) 948 0101
sgordon@signatureassociates.com

JOHN BOYD
(248) 948 0102
jboyd@signatureassociates.com

SIGNATURE ASSOCIATES
One Towne Square, Suite 1200
Southfield, MI 48076
www.signatureassociates.com

Information is subject to verification and no liability for errors or omissions is assumed. Price is subject to change and listing withdrawal.