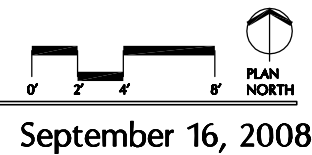


4715 Gross Building Square Feet
 1260 Future Additional Gross Square Feet
 20 Total Parking Spaces
 Parking Ratio at 4715 s.f. = 1 to 236
 Parking Ratio at 5975 s.f. = 1 to 299

Dr. Nguyen Medical Office Building
 Denton, Tx

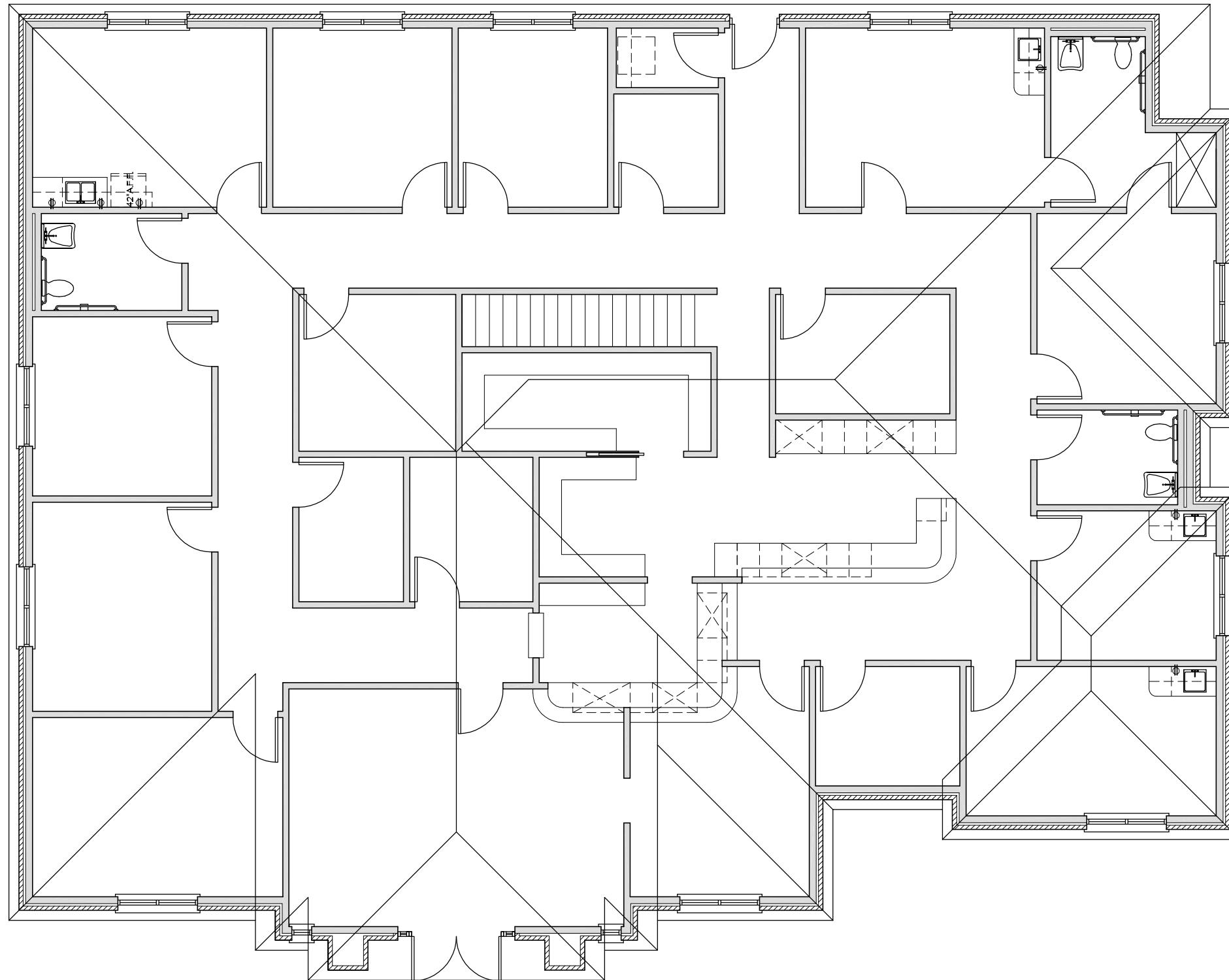


INTERIM REVIEW ONLY
 These documents are incomplete, and are released for interim review only and are not intended for regulatory approval, bidding, permit, or construction purposes.
 Architect: D. Graham Bryant
 Arch. Reg. No.: Texas # 19114
 Date: Sept. 16, 2008

**BRYANT
 BURTON
 KUPCUNAS**
 ARCHITECTS

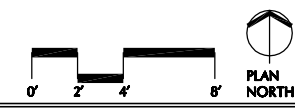
Copyright © Bryant Burton Kucunas Architects, Inc. 2008

September 16, 2008



4715 Gross Building Square Feet
 1260 Future Additional Gross Square Feet
 20 Total Parking Spaces
 Parking Ratio at 4715 s.f. = 1 to 236
 Parking Ratio at 5975 s.f. = 1 to 299

Dr. Nguyen Medical Office Building
 Denton, Tx

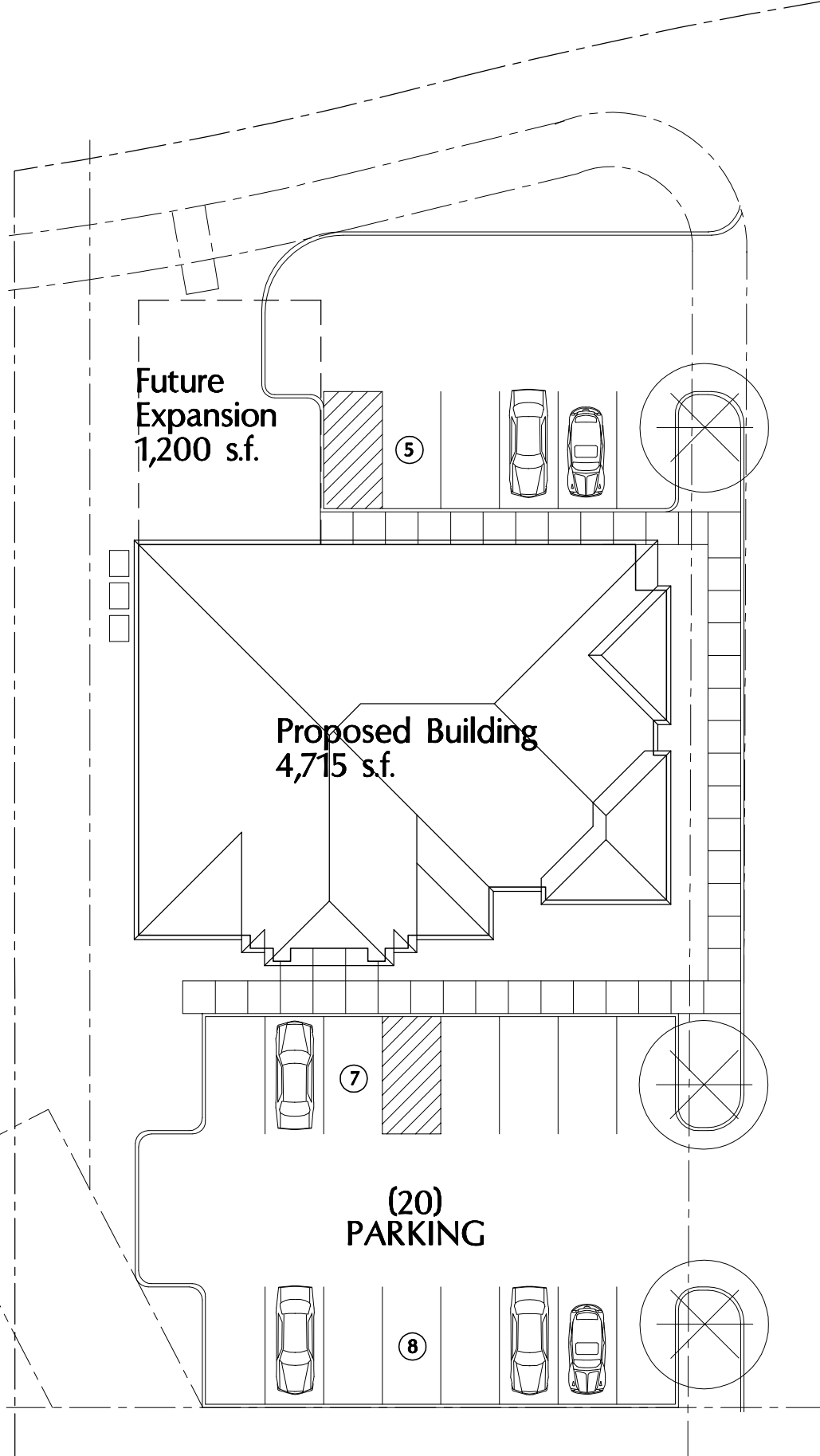


September 16, 2008

INTERIM REVIEW ONLY
 These documents are incomplete, and
 are released for interim review only, and
 are not intended for regulatory approval,
 bidding, permit, or construction purposes.
 Architect: D. Graham Bryant
 Arch. Reg. No.: Texas # 19114
 Date: Sept. 16, 2008

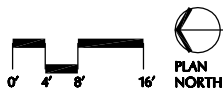
**BRYANT
 BURTON
 KUPCUNAS**
 ARCHITECTS

Copyright © Bryant Burton Kucunas Architects, Inc. 2008



Dr. Nguyen Medical Office

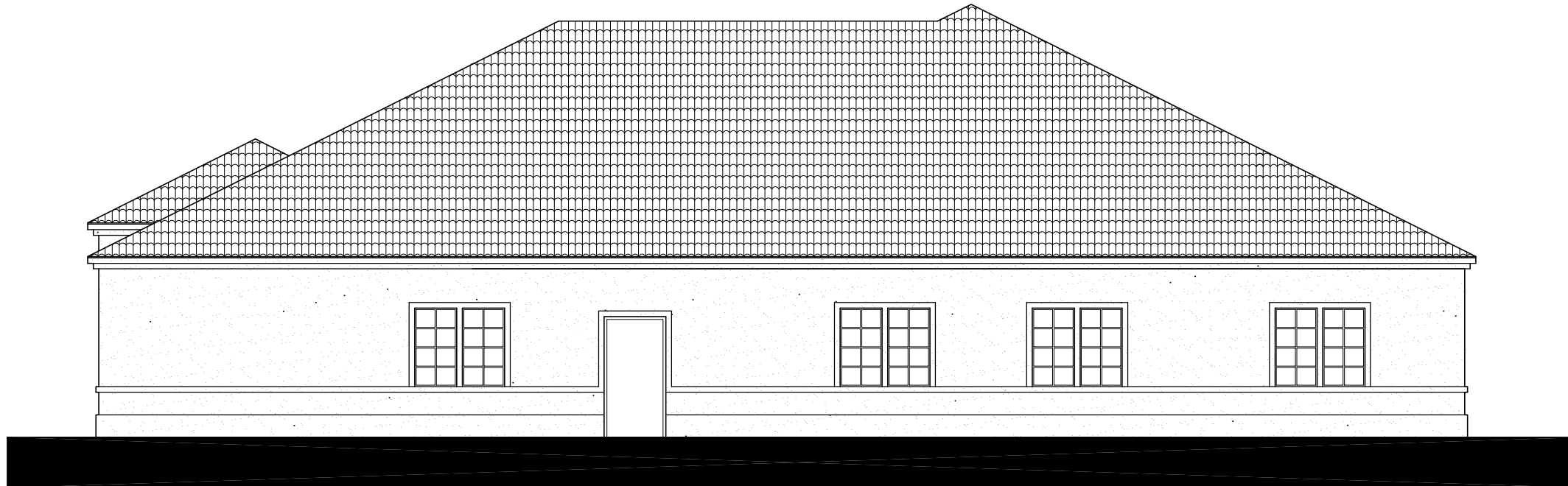
Denton, Tx



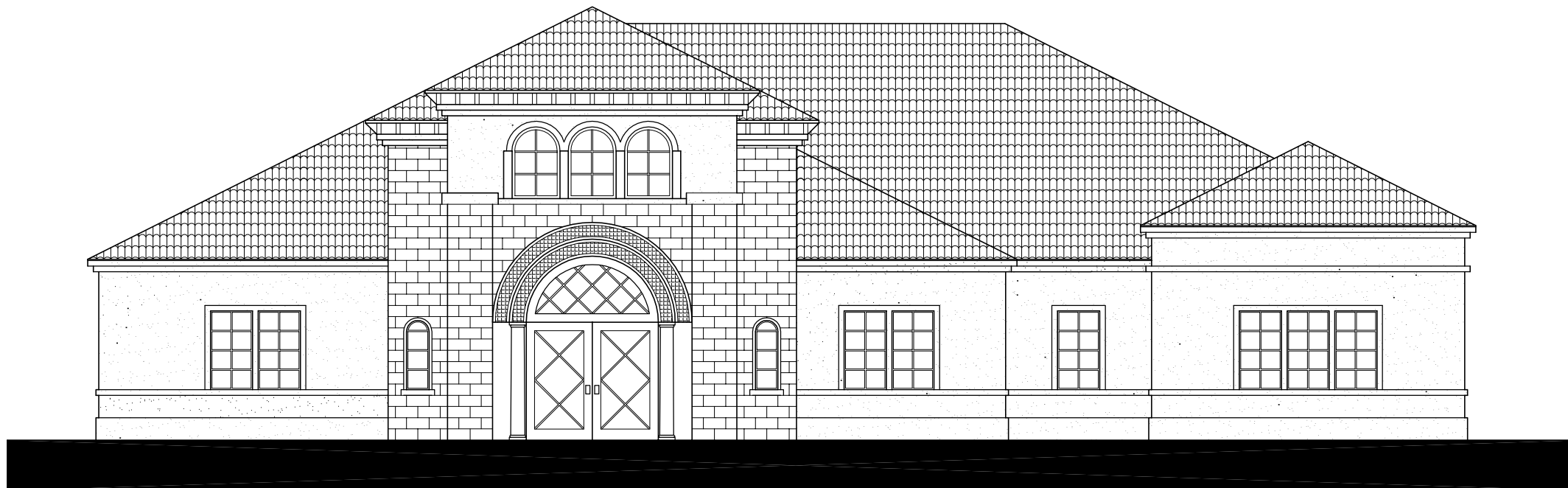
September 16, 2008

INTERIM REVIEW ONLY
 These documents are incomplete, and are released for interim review only and are not intended for regulatory approval, bidding, permit, or construction purposes.
 Architect: D. Graham Bryant
 Arch. Reg. No.: Texas # 15114
 Date: Sept. 16, 2008

**BRYANT
 BURTON
 KUPCUNAS**
 ARCHITECTS



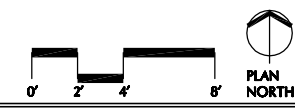
East Elevation



West Elevation

Dr. Nguyen Medical Office Building

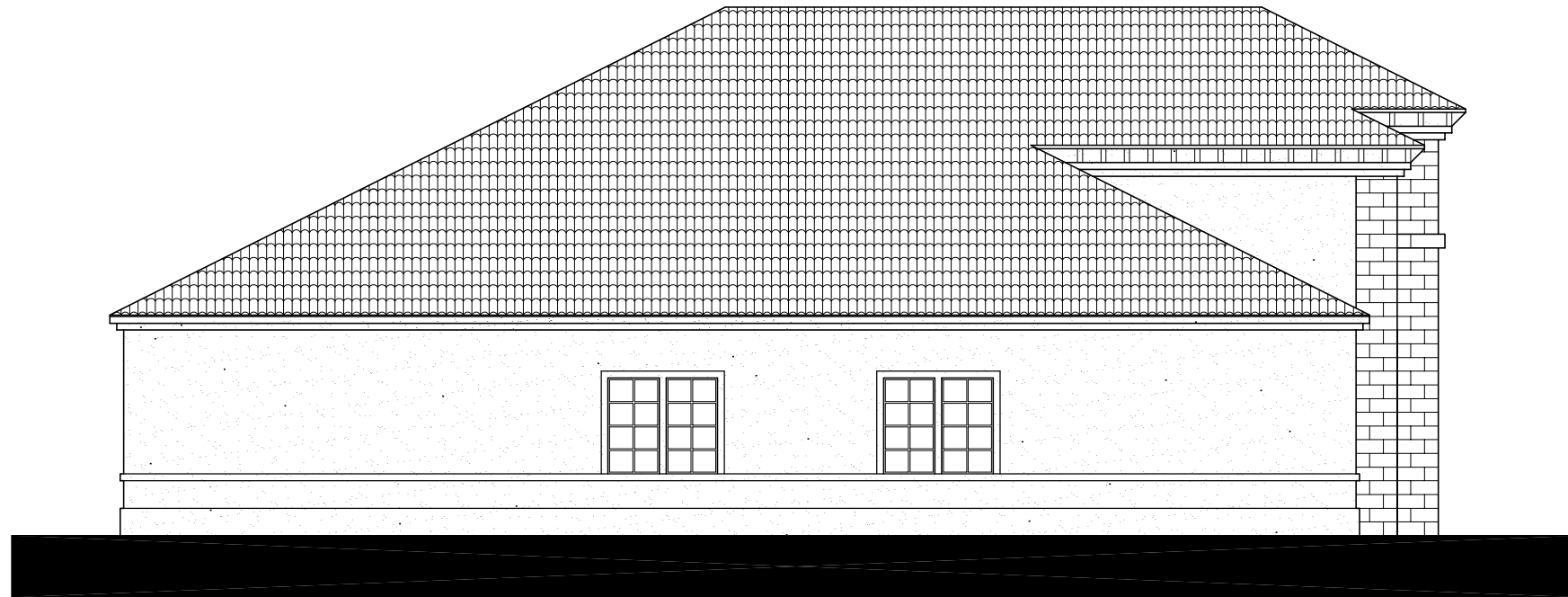
Denton, Tx



September 16, 2008

INTERIM REVIEW ONLY
 These documents are incomplete, and
 are not intended for regulatory approval,
 bidding, permit, or construction purposes.
 Architect: D. Graham Bryant
 Arch. Reg. No.: Texas # 19114
 Date: Sept. 16, 2008





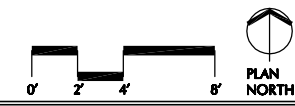
North Elevation



South Elevation

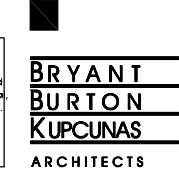
Dr. Nguyen Medical Office Building

Denton, Tx

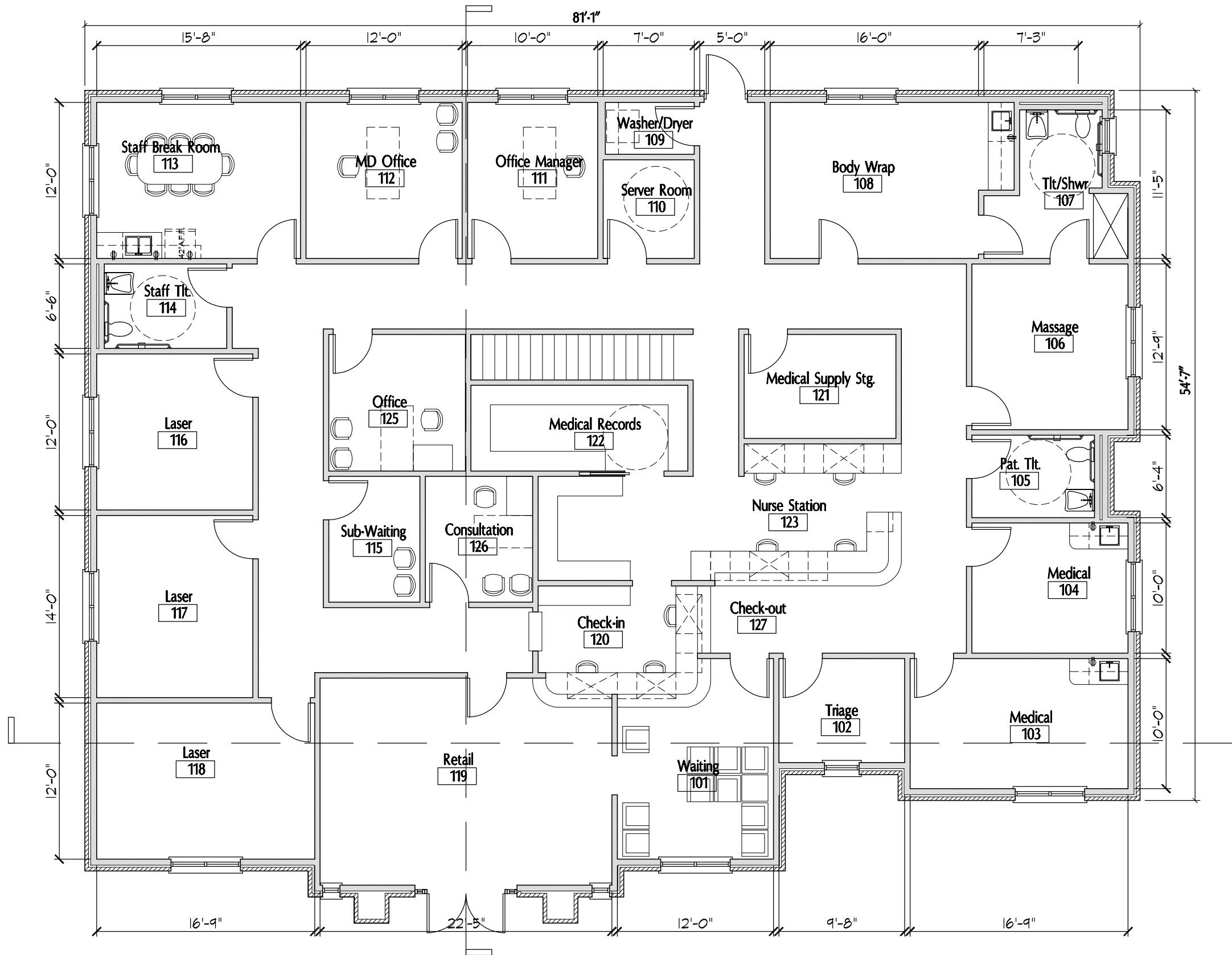


September 16, 2008

INTERIM REVIEW ONLY
 These documents are incomplete, and
 are released for interim review only and
 are not intended for regulatory approval,
 bidding, permit, or construction purposes.
 Architect: D. Graham Bryant
 Arch. Reg. No.: Texas # 19114
 Date: Sept. 16, 2008

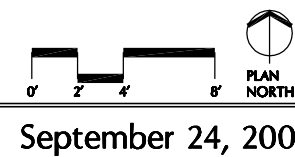


Copyright © Bryant Burton Kucunas Architects, Inc. 2008



4715 Gross Building Square Feet
 1260 Future Additional Gross Square Feet
 20 Total Parking Spaces
 Parking Ratio at 4715 s.f. = 1 to 236
 Parking Ratio at 5975 s.f. = 1 to 299

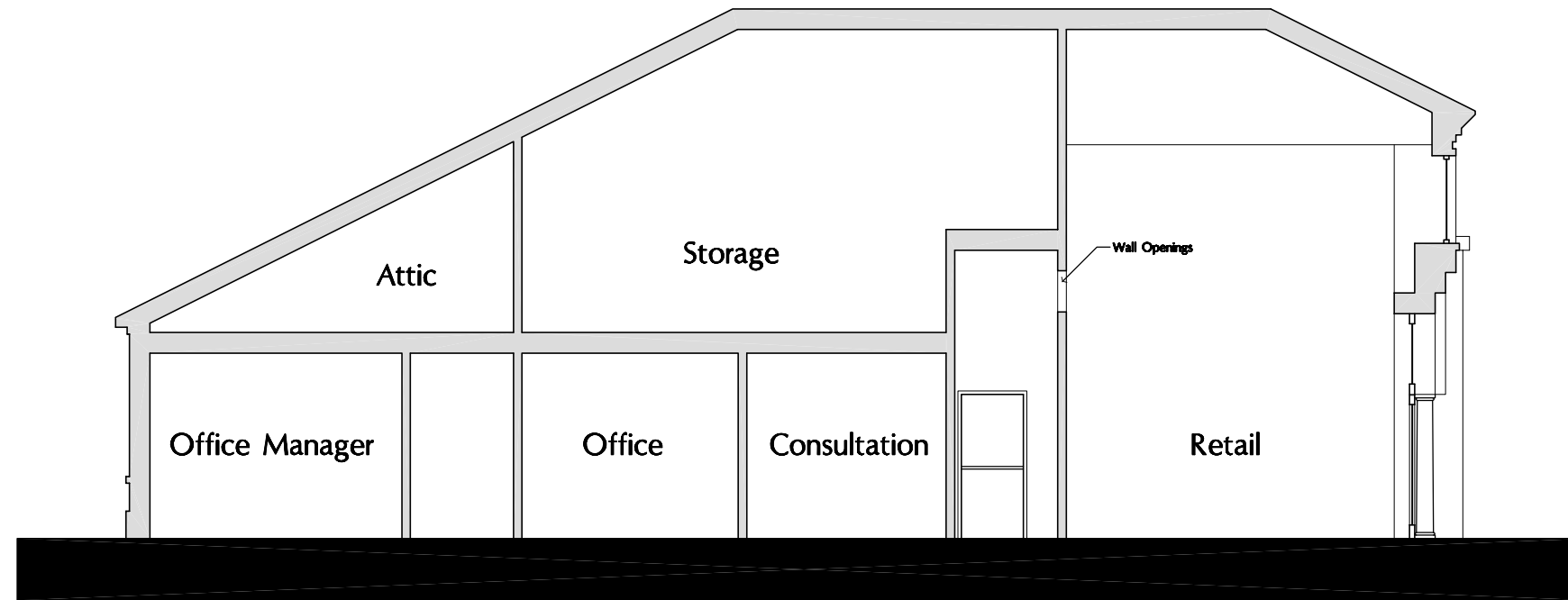
Dr. Nguyen Medical Office Building
 Denton, Tx



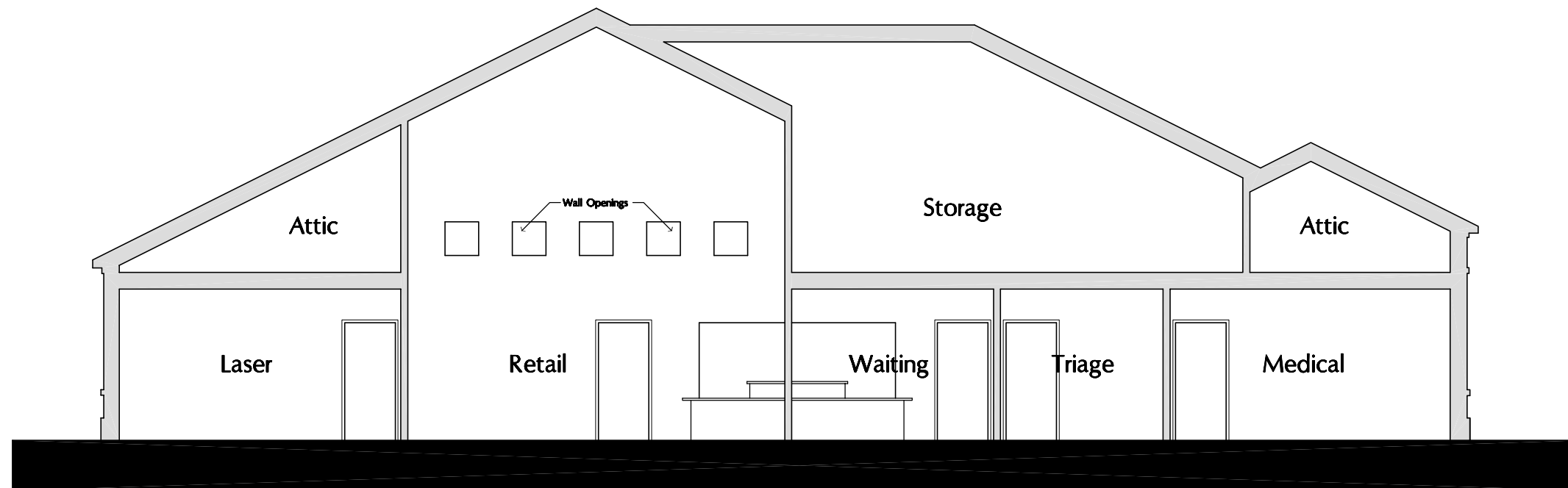
INTERIM REVIEW ONLY
 These documents are incomplete, and
 are released for interim review only and
 are not intended for regulatory approval,
 bidding, permit, or construction purposes.
 Architect: D. Graham Bryant
 Arch. Reg. No.: Texas # 19114
 Date: Sept. 24, 2008

**BRYANT
 BURTON
 KUPCUNAS**
 ARCHITECTS

September 24, 2008



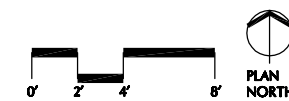
Building Section East/West



West Elevation

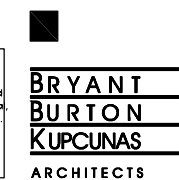
Dr. Nguyen Medical Office Building

Denton, Tx

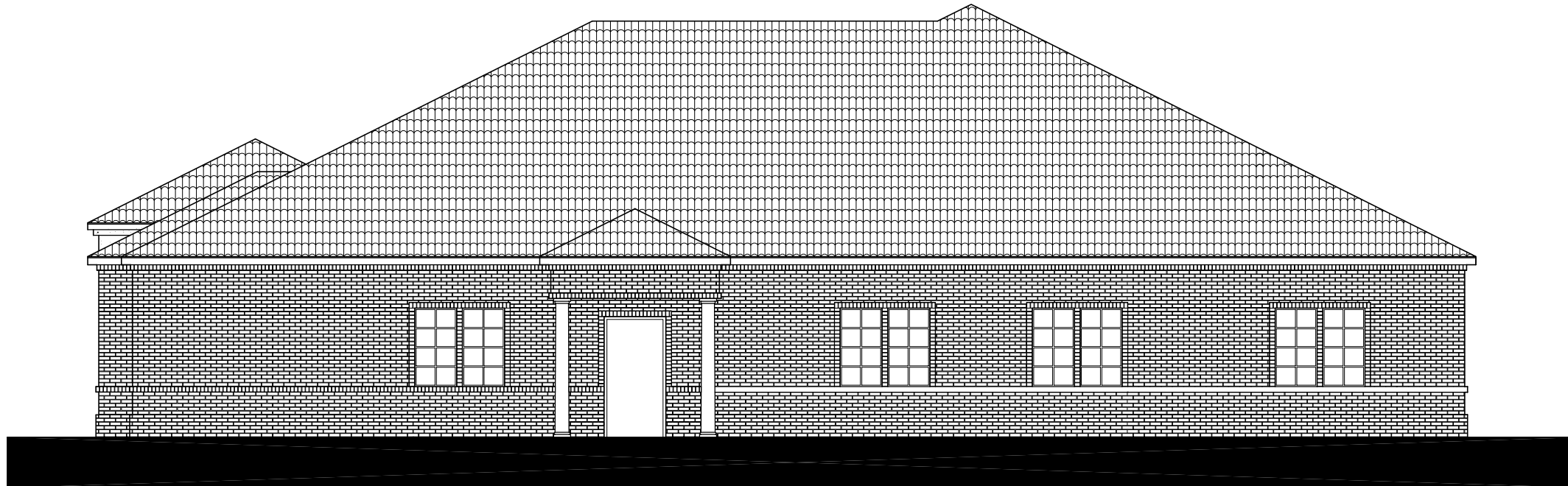


September 24, 2008

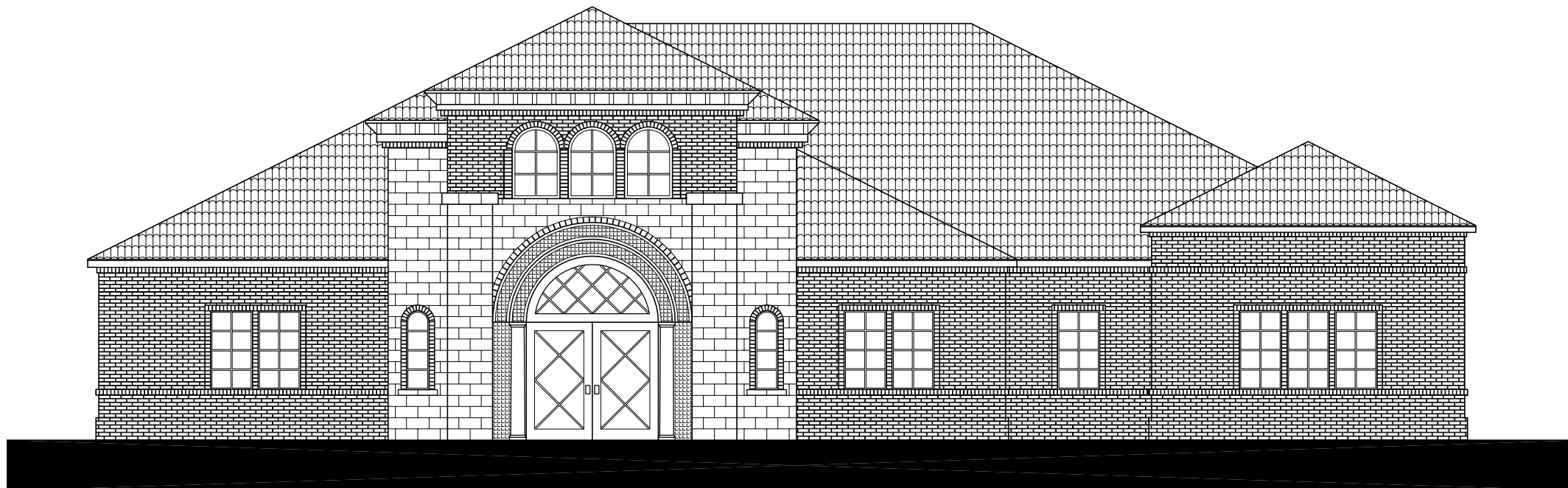
INTERIM REVIEW ONLY
 These documents are incomplete, and
 are released for interim review only and
 are not intended for regulatory approval,
 bidding, permit, or construction purposes.
 Architect: D. Graham Bryant
 Arch. Reg. No.: Texas # 19114
 Date: Sept. 24, 2008



Copyright © Bryant Burton Kucunas Architects, Inc. 2008



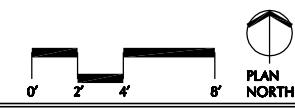
East Elevation



West Elevation

Dr. Nguyen Medical Office Building

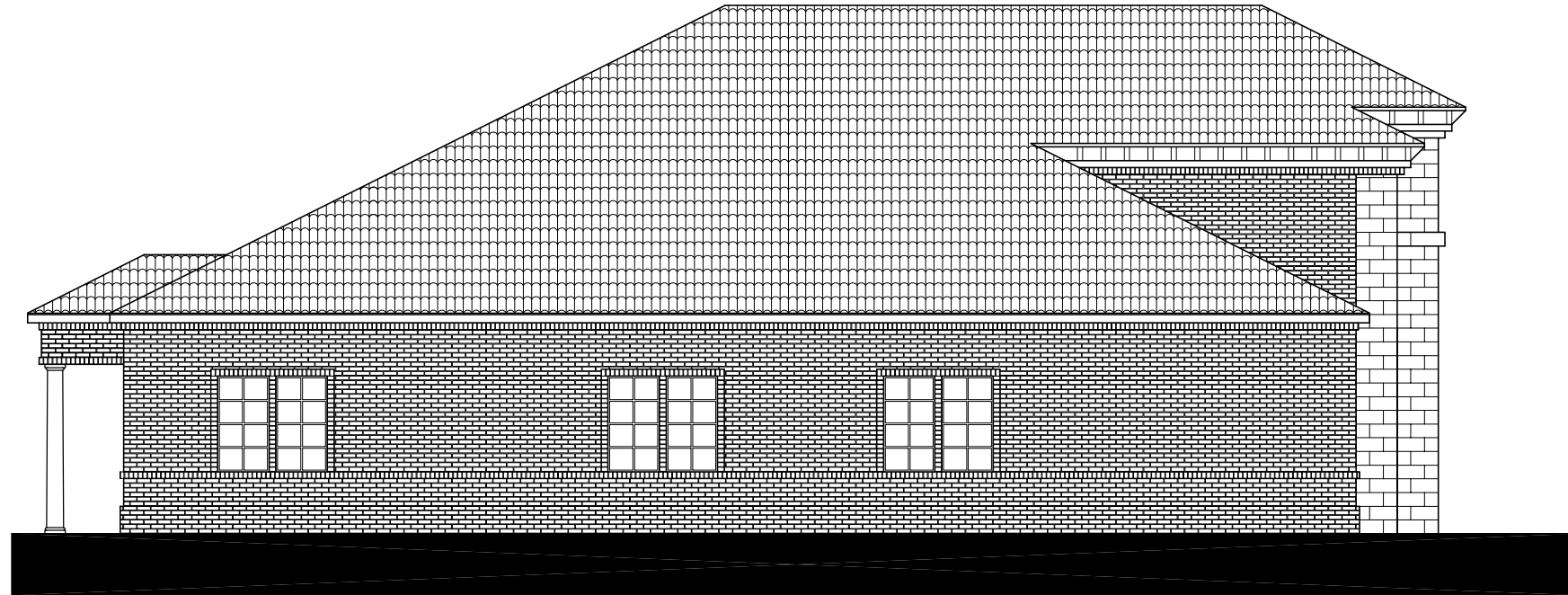
Denton, Tx



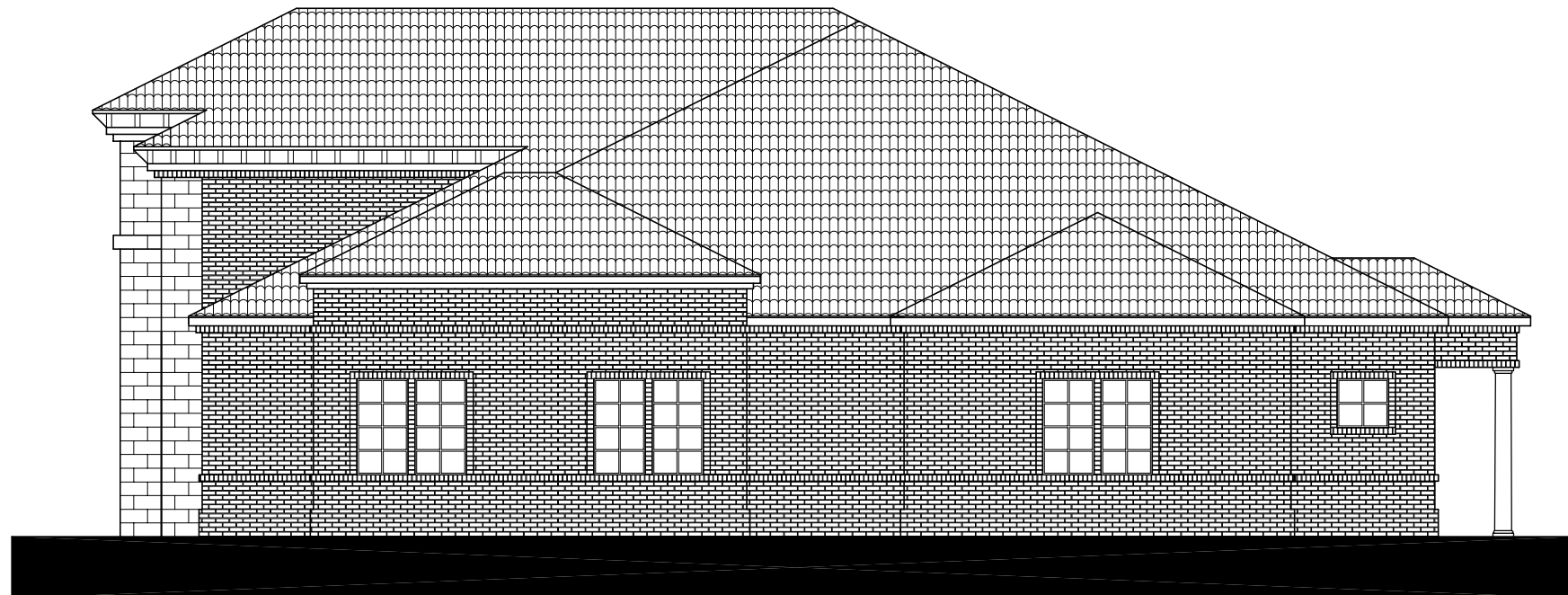
September 24, 2008

INTERIM REVIEW ONLY
 These documents are incomplete, and are released for interim review only and are not intended for regulatory approval, bidding, permit, or construction purposes.
 Architect: D. Graham Bryant
 Arch. Reg. No.: Texas # 19114
 Date: Sept. 24, 2008

**BRYANT
 BURTON
 KUPCUNAS**
 ARCHITECTS



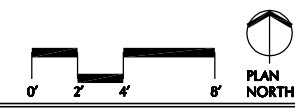
North Elevation



South Elevation

Dr. Nguyen Medical Office Building

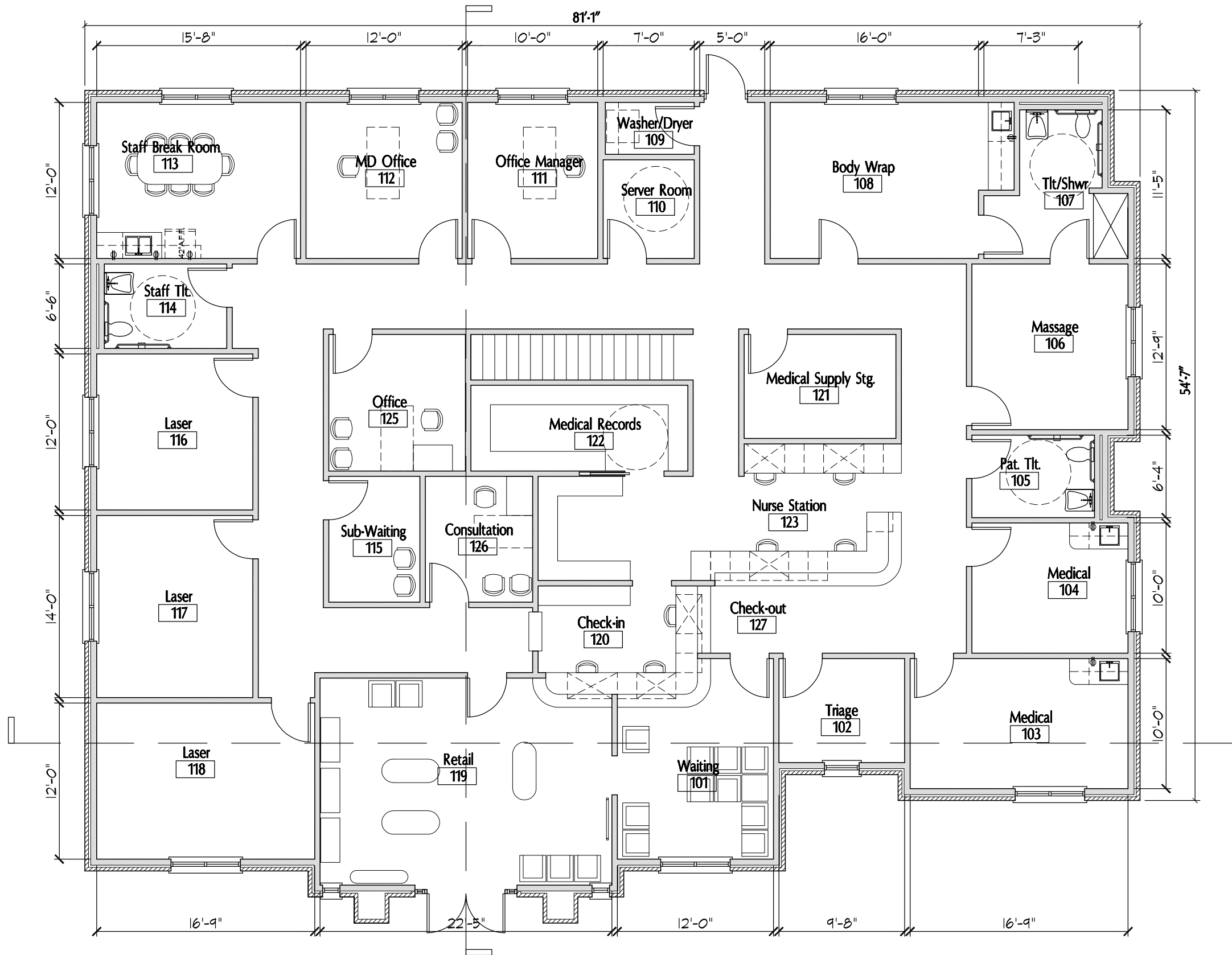
Denton, Tx



September 24, 2008

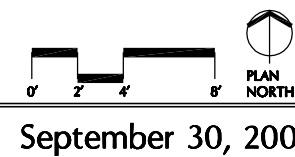
INTERIM REVIEW ONLY
 These documents are incomplete, and
 are released for interim review only and
 are not intended for regulatory approval,
 bidding, permit, or construction purposes.
 Architect: D. Graham Bryant
 Arch. Reg. No.: Texas # 19114
 Date: Sept. 24, 2008





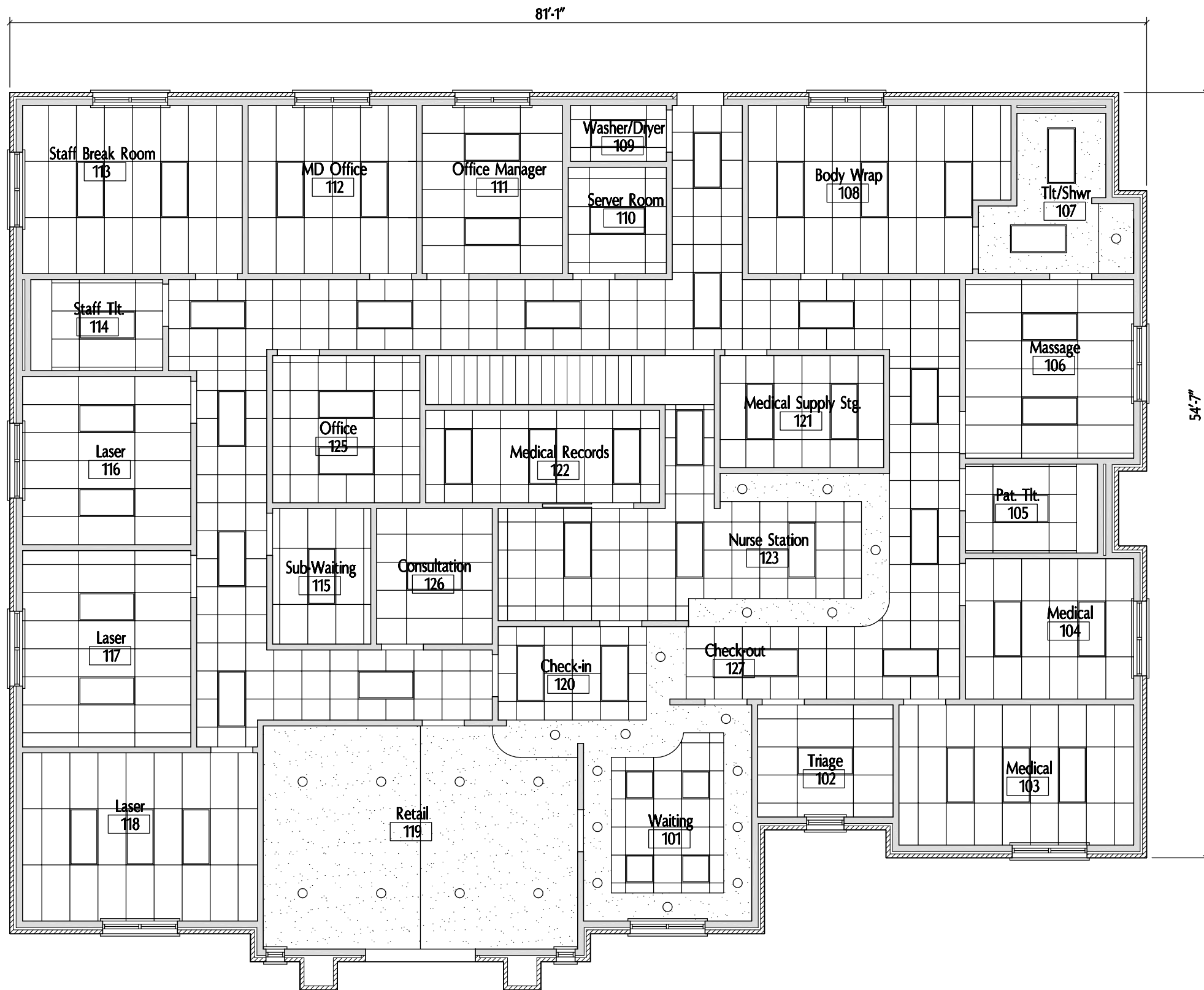
4734 Gross Building Square Feet
 1260 Future Additional Gross Square Feet
 20 Total Parking Spaces
 Parking Ratio at 4734 s.f. = 1 to 236
 Parking Ratio at 5975 s.f. = 1 to 299

Dr. Nguyen Medical Office Building
 Denton, Tx



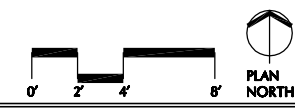
INTERIM REVIEW ONLY
 These documents are incomplete, and are released for interim review only and are not intended for regulatory approval, bidding, permit, or construction purposes.
 Architect: D. Graham Bryant
 Arch. Reg. No.: Texas # 19114
 Date: Sept. 30, 2008

**BRYANT
 BURTON
 KUPCUNAS**
 ARCHITECTS



Dr. Nguyen Medical Office Building

Denton, Tx

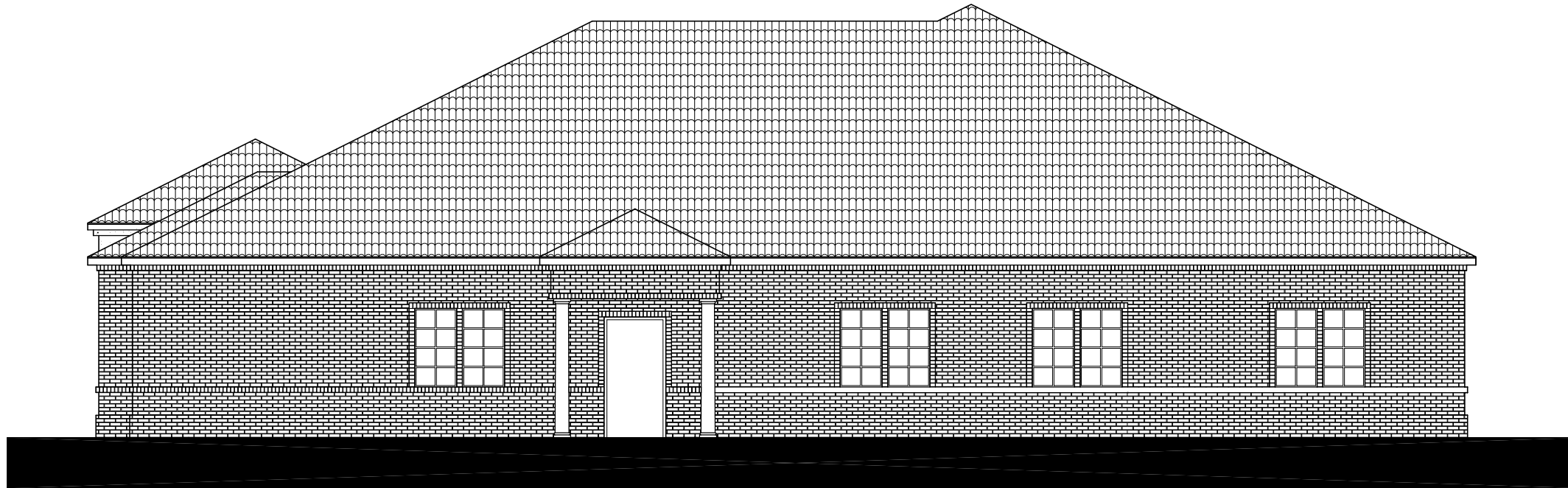


September 30, 2008

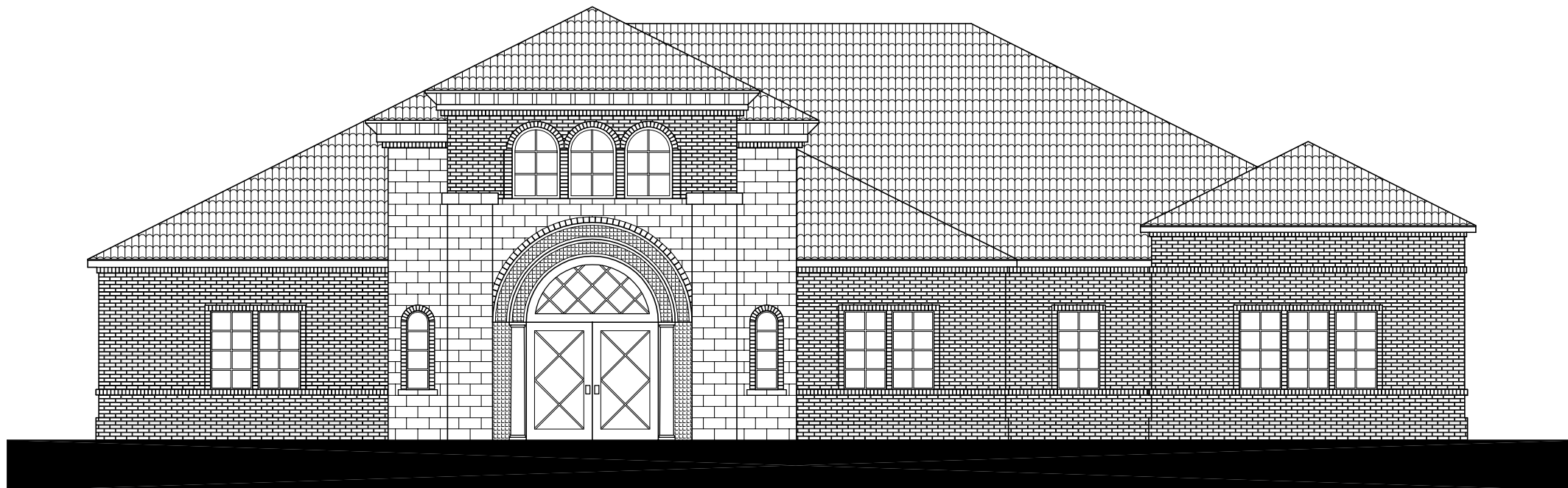
INTERIM REVIEW ONLY
 These documents are incomplete, and are released for interim review only and are not intended for regulatory approval, bidding, permit, or construction purposes.
 Architect: D. Graham Bryant
 Arch. Reg. No.: Texas # 19114
 Date: Sept. 30, 2008

**BRYANT
 BURTON
 KUPCUNAS**
 ARCHITECTS

Copyright © Bryant Burton Kucunas Architects, Inc. 2008



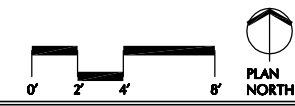
East Elevation



West Elevation

Dr. Nguyen Medical Office Building

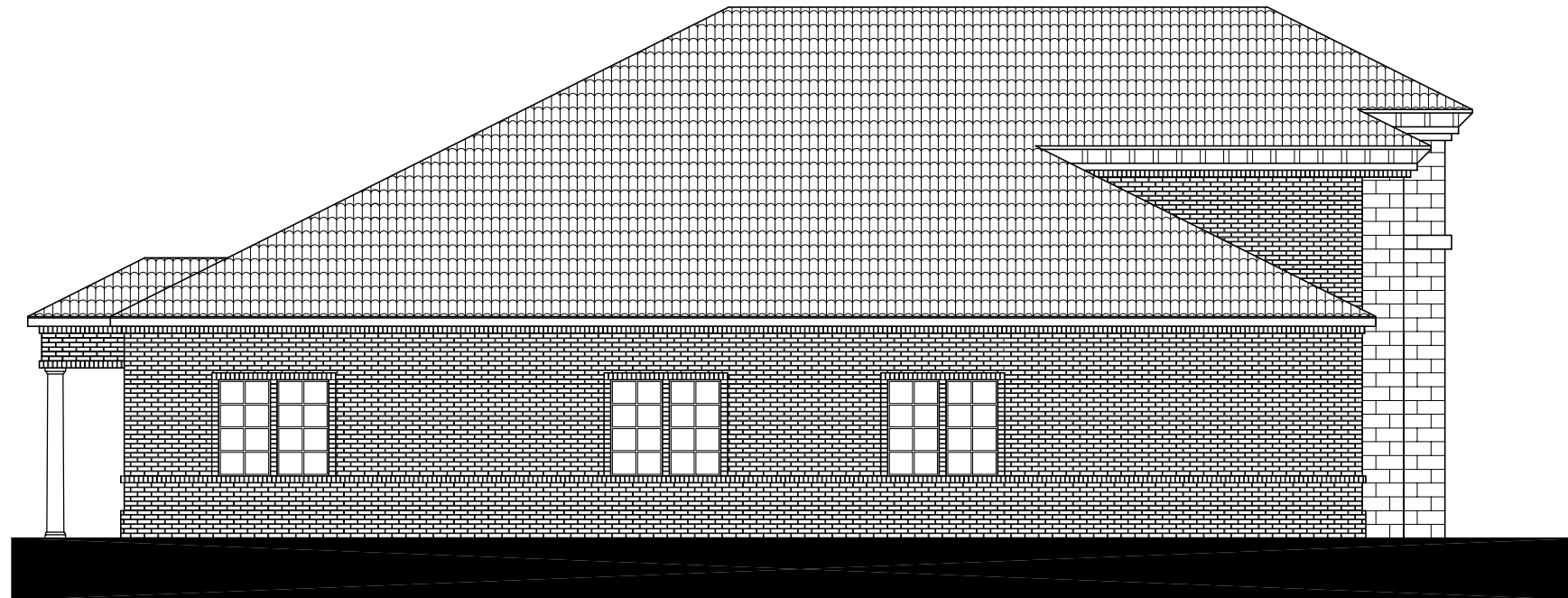
Denton, Tx



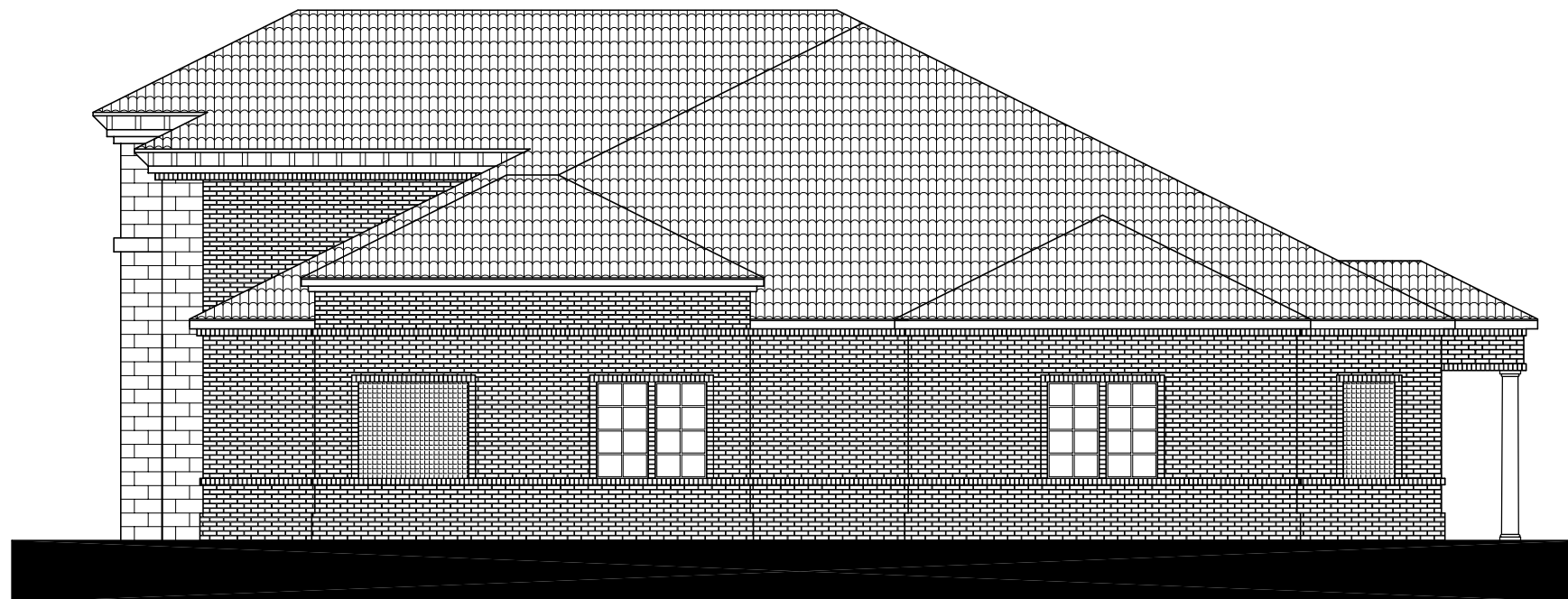
September 30, 2008

INTERIM REVIEW ONLY
 These documents are incomplete, and
 are released for interim review only and
 are not intended for regulatory approval,
 bidding, permit, or construction purposes.
 Architect: D. Graham Bryant
 Arch. Reg. No.: Texas # 19114
 Date: Sept. 30, 2008

**BRYANT
 BURTON
 KUPCUNAS**
 ARCHITECTS



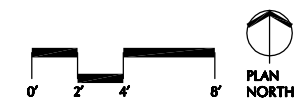
North Elevation



South Elevation

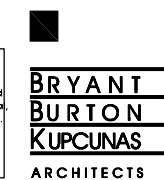
Dr. Nguyen Medical Office Building

Denton, Tx

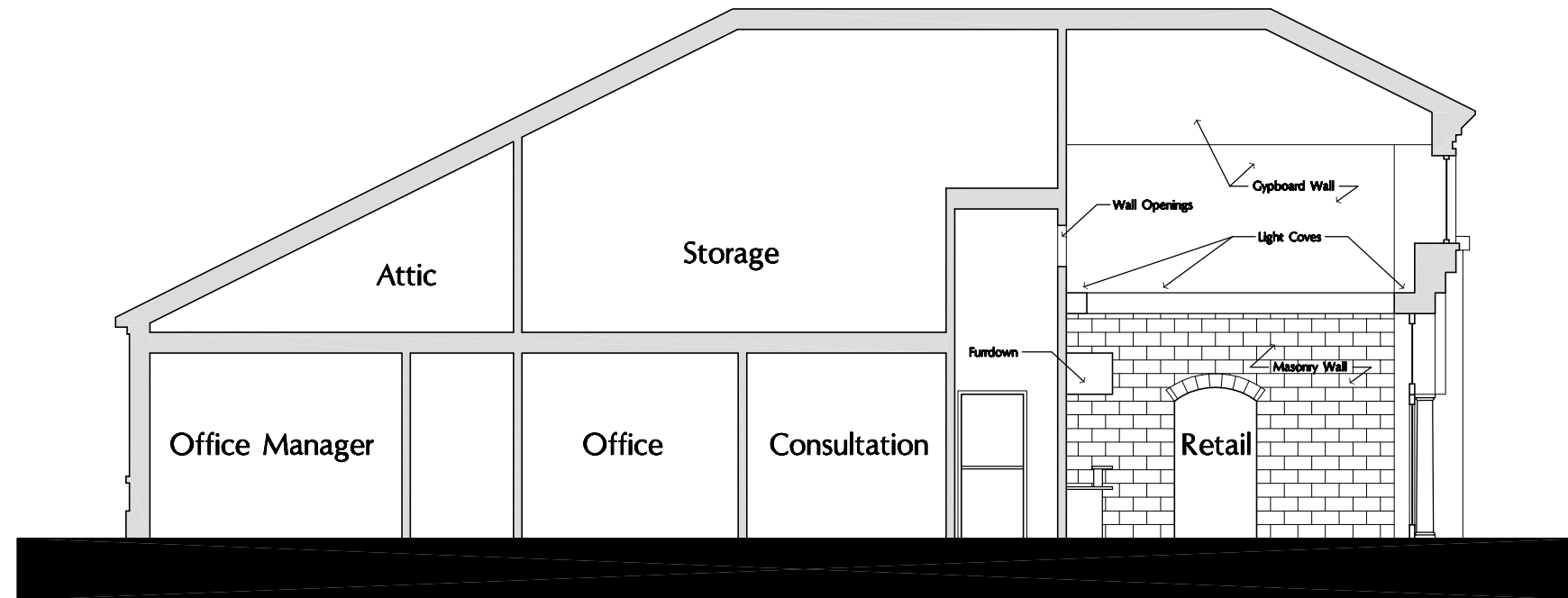


September 30, 2008

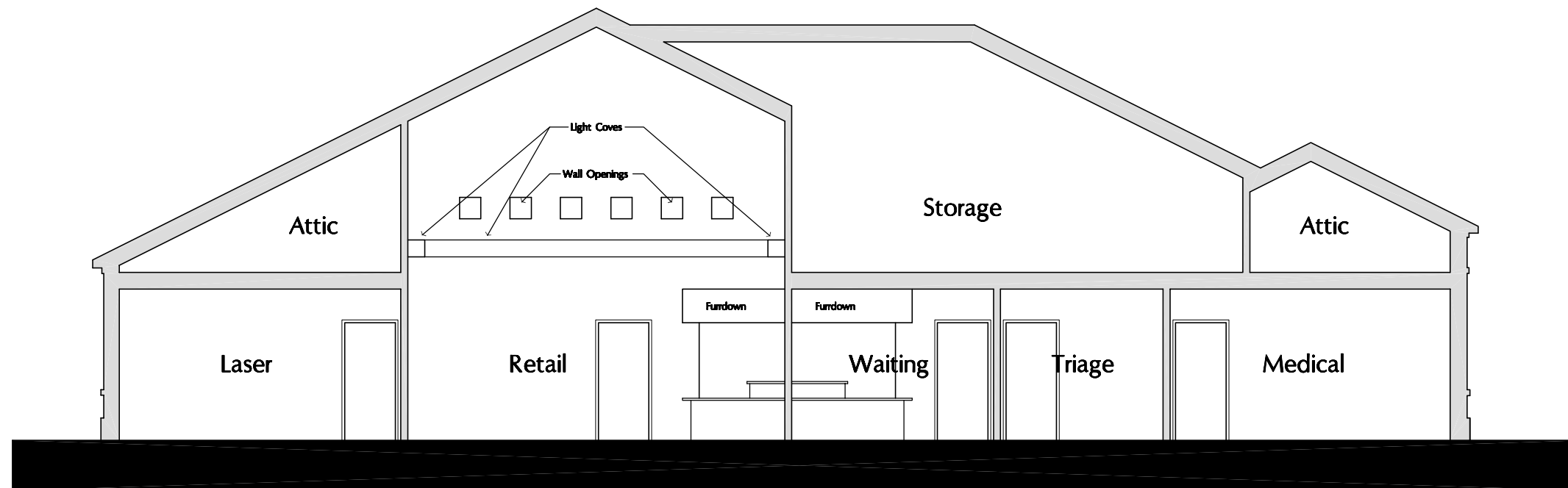
INTERIM REVIEW ONLY
 These documents are incomplete, and
 are released for interim review only and
 are not intended for regulatory approval,
 bidding, permit, or construction purposes.
 Architect: D. Graham Bryant
 Arch. Reg. No.: Texas # 19114
 Date: Sept. 30, 2008



Copyright © Bryant Burton Kupcunas Architects, Inc. 2008



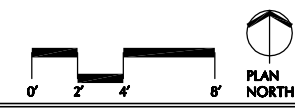
Building Section East/West



West Elevation

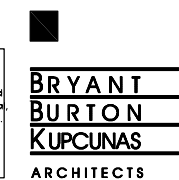
Dr. Nguyen Medical Office Building

Denton, Tx

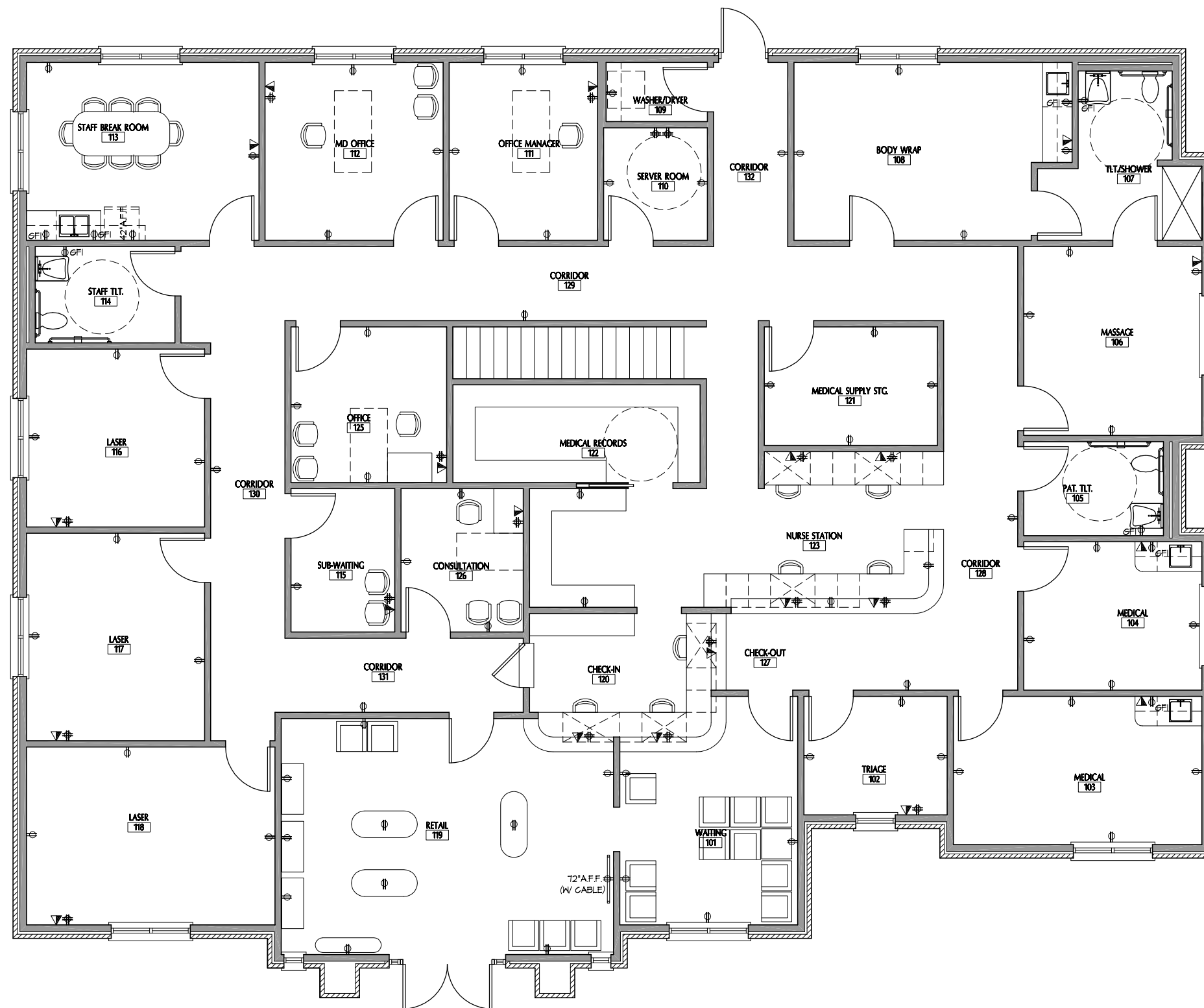


September 30, 2008

INTERIM REVIEW ONLY
 These documents are incomplete, and
 are released for interim review only, and
 are not intended for regulatory approval,
 bidding, permit, or construction purposes.
 Architect: D. Graham Bryant
 Arch. Reg. No.: Texas # 19114
 Date: Sept. 30, 2008



Copyright © Bryant Burton Kucunas Architects, Inc. 2008

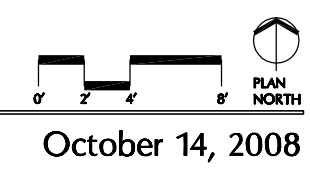


LEGEND

- ⊕ DUPLEX RECEPTACLE
- ▲ PHONE/DATA
- ⊕ QUAD RECEPTACLE

4734 Gross Building Square Feet
 1260 Future Additional Gross Square Feet
 20 Total Parking Spaces
 Parking Ratio at 4734 s.f. = 1 to 236
 Parking Ratio at 5975 s.f. = 1 to 299

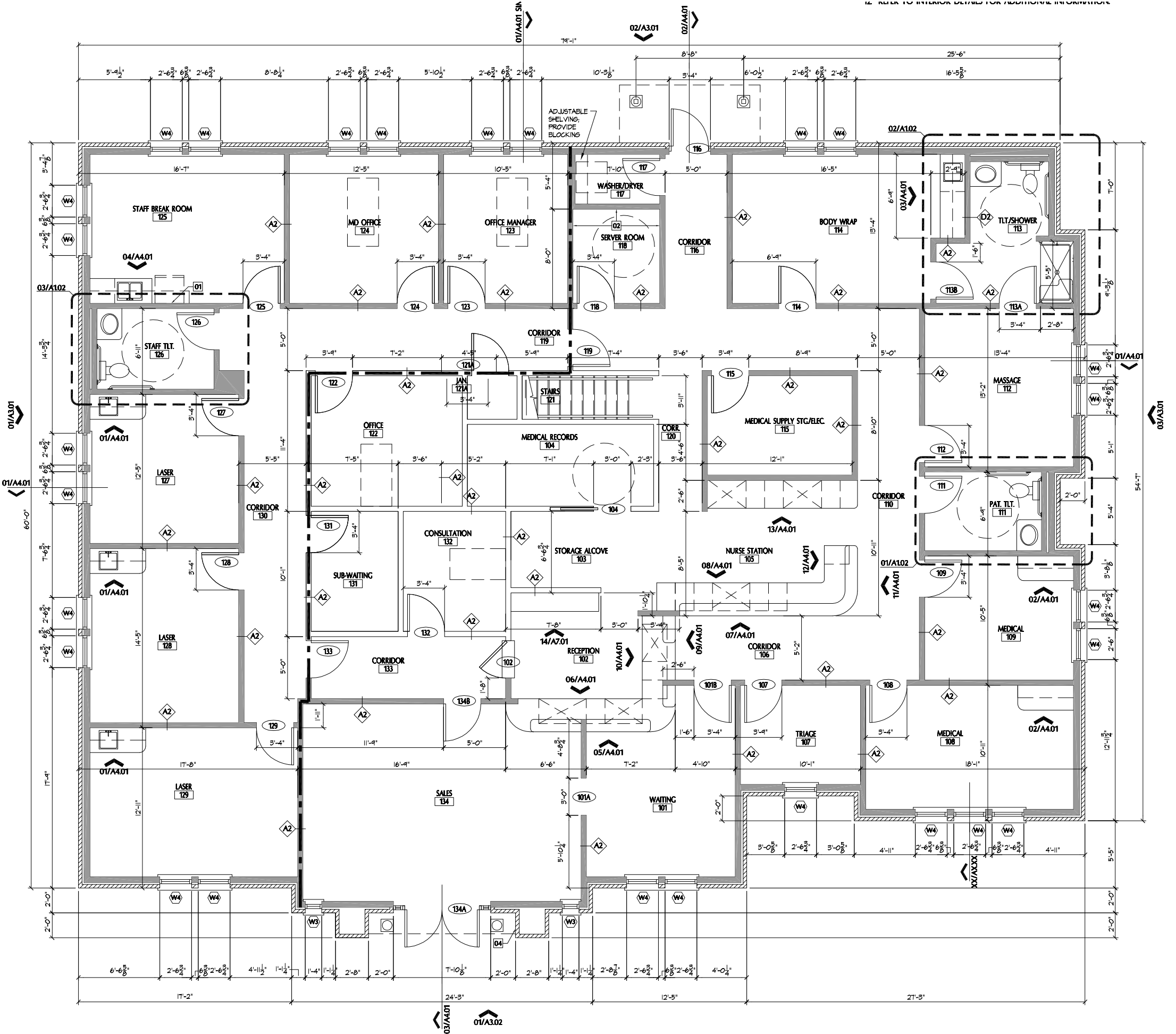
Dr. Nguyen Medical Office Building
 Denton, Tx



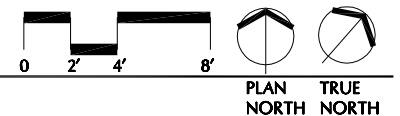
INTERIM REVIEW ONLY
 These documents are incomplete, and are not intended for regulatory approval, bidding, permits, or construction purposes.
 Architect: D. Graham Bryant
 Arch. Reg. No.: Texas # 19114
 Date: Oct. 14, 2008

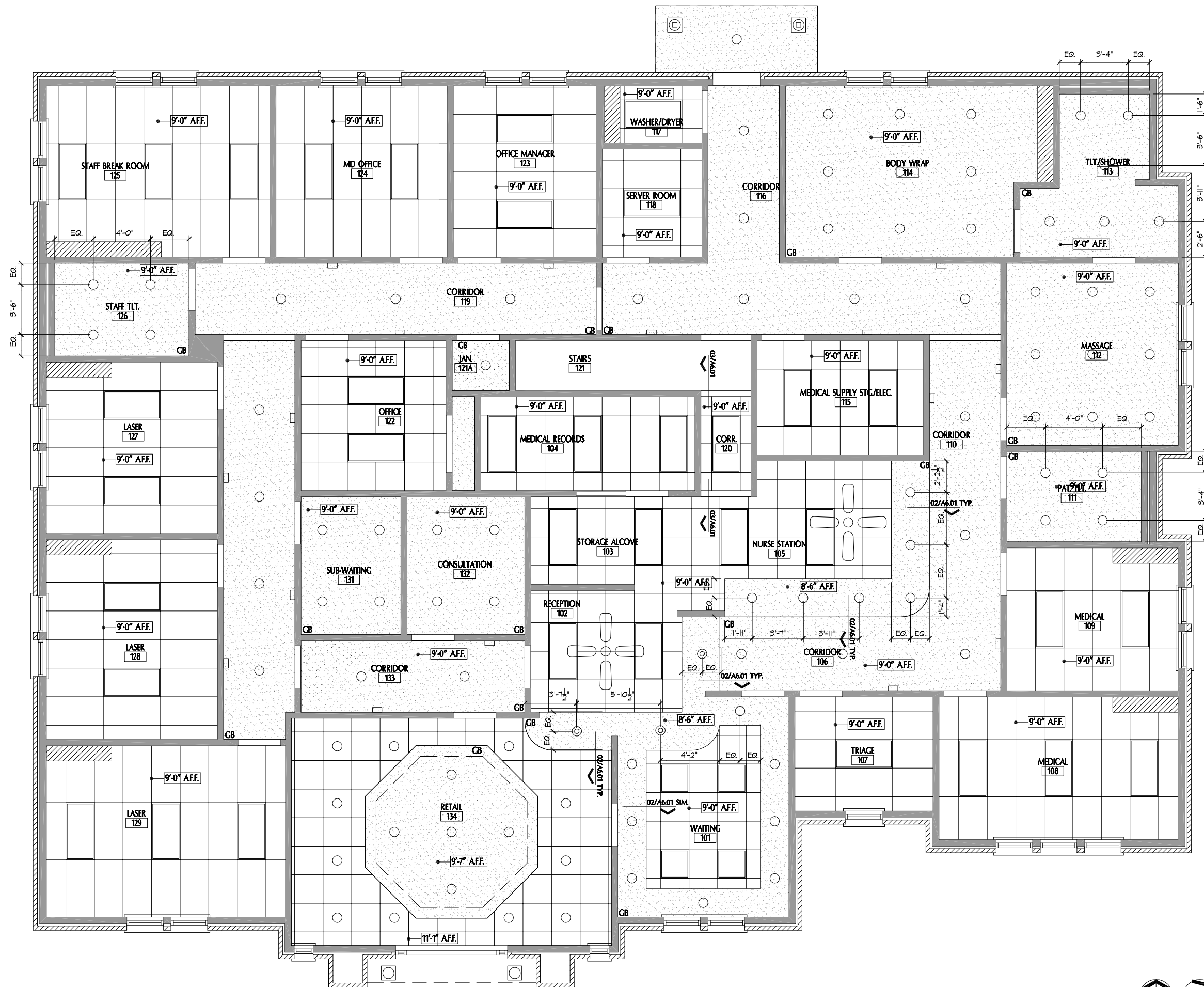
**BRYANT
 BURTON
 KUPCUNAS**
 ARCHITECTS

Copyright © Bryant Burton Kucunas Architects, Inc. 2008

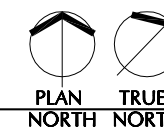
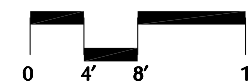


01 FLOOR PLAN
SCALE 1/4"=1'-0"

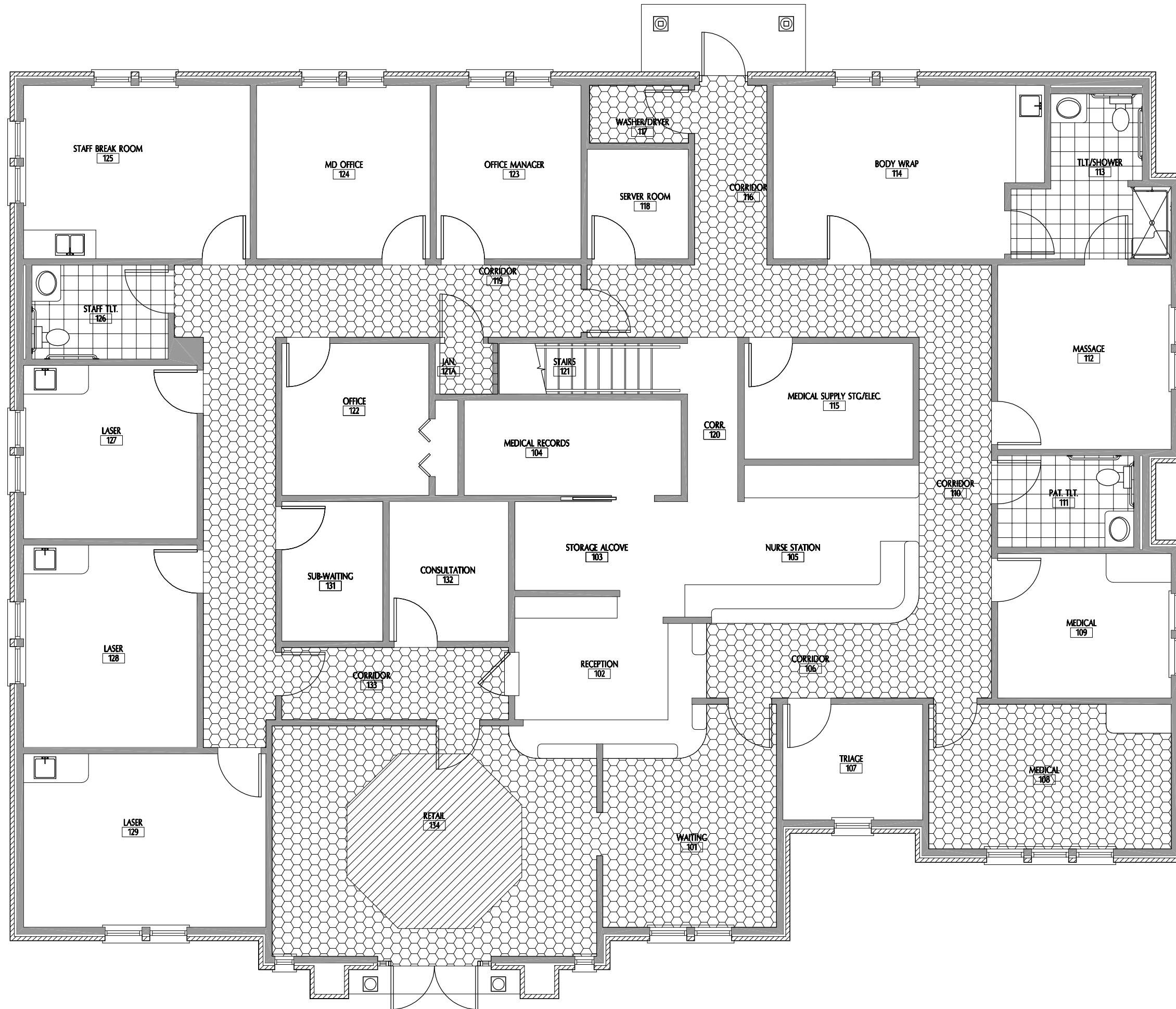


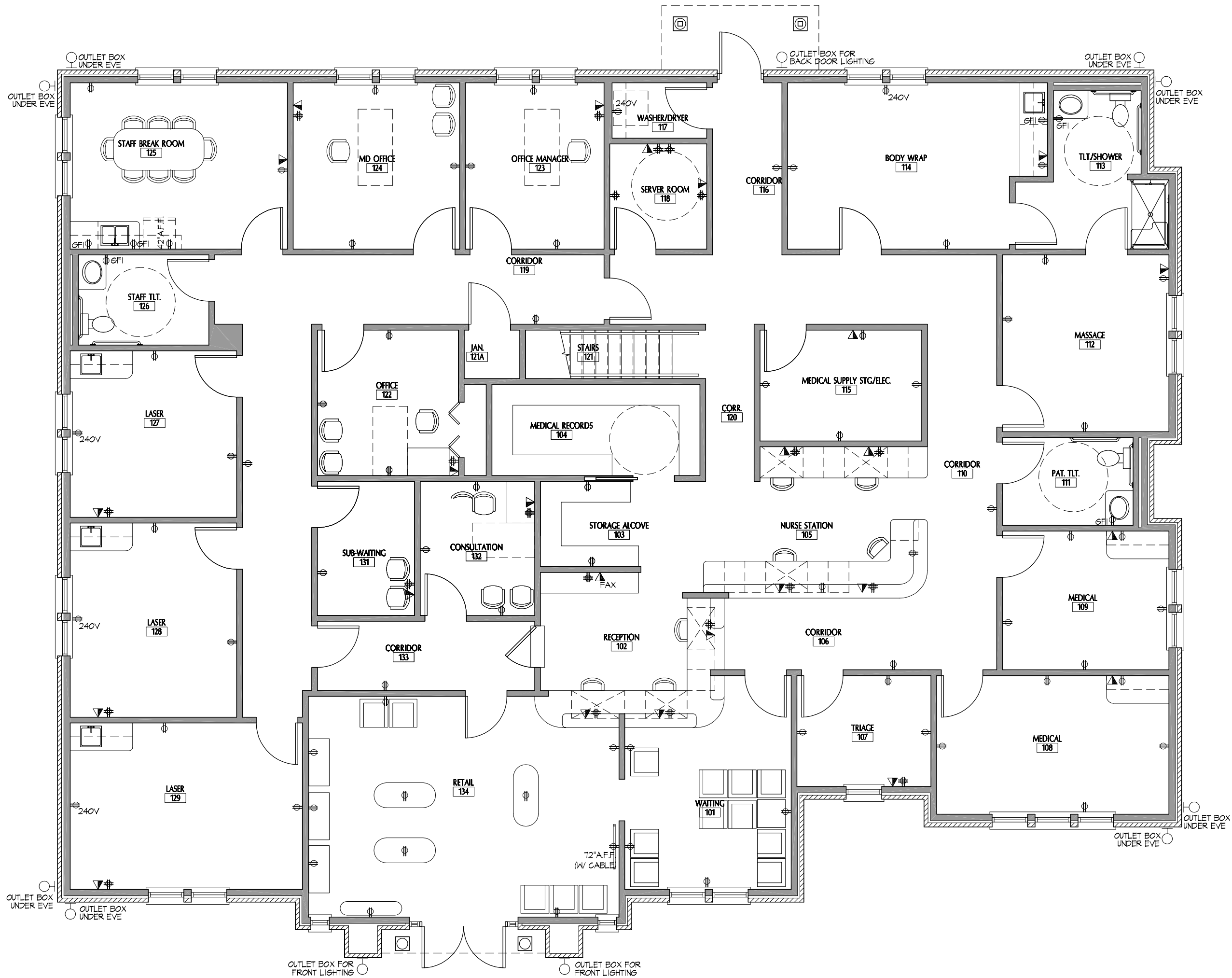


01 REFLECTED CEILING PLAN
 1/8" = 1'-0"



PLAN NORTH
 TRUE NORTH





LEGEND

- ⊕ DUPLEX RECEPTACLE
- ▲ PHONE/DATA
- ⊕ QUAD RECEPTACLE