



# Demographic and Income Comparison Profile

1150 State St, Lemont, Illinois, 60439  
Rings: 1, 3, 5 mile radii

Prepared by: Randolph Taylor MBA, CCIM,  
Latitude: 41.65859  
Longitude: -87.99988

	1 mile	3 miles	5 miles
<b>Census 2010 Summary</b>			
Population	9,070	25,242	96,209
Households	3,286	8,928	32,231
Families	2,580	6,899	25,042
Average Household Size	2.76	2.80	2.97
Owner Occupied Housing Units	2,879	7,699	26,878
Renter Occupied Housing Units	407	1,229	5,353
Median Age	41.6	43.0	37.5
<b>2015 Summary</b>			
Population	9,058	25,722	97,157
Households	3,317	9,178	32,694
Families	2,594	7,055	25,229
Average Household Size	2.73	2.78	2.95
Owner Occupied Housing Units	2,865	7,782	26,709
Renter Occupied Housing Units	451	1,396	5,985
Median Age	43.3	44.6	38.6
Median Household Income	\$90,287	\$88,763	\$78,365
Average Household Income	\$113,049	\$114,838	\$99,960
<b>2020 Summary</b>			
Population	9,220	26,186	98,223
Households	3,401	9,381	33,106
Families	2,655	7,192	25,442
Average Household Size	2.71	2.77	2.95
Owner Occupied Housing Units	2,941	7,935	26,968
Renter Occupied Housing Units	460	1,446	6,138
Median Age	44.5	45.7	39.5
Median Household Income	\$104,840	\$103,470	\$89,058
Average Household Income	\$130,117	\$131,992	\$113,454
<b>Trends: 2015-2020 Annual Rate</b>			
Population	0.36%	0.36%	0.22%
Households	0.50%	0.44%	0.25%
Families	0.47%	0.39%	0.17%
Owner Households	0.52%	0.39%	0.19%
Median Household Income	3.03%	3.11%	2.59%

Source: U.S. Census Bureau, Census 2010 Summary File 1. Esri forecasts for 2015 and 2020.

December 18, 2015



# Demographic and Income Comparison Profile

1150 State St, Lemont, Illinois, 60439  
Rings: 1, 3, 5 mile radii

Prepared by: Randolph Taylor MBA, CCIM,  
Latitude: 41.65859  
Longitude: -87.99988

2015 Households by Income	1 mile		3 miles		5 miles	
	Number	Percent	Number	Percent	Number	Percent
<\$15,000	200	6.0%	508	5.5%	1,870	5.7%
\$15,000 - \$24,999	171	5.2%	565	6.2%	1,918	5.9%
\$25,000 - \$34,999	188	5.7%	508	5.5%	2,574	7.9%
\$35,000 - \$49,999	277	8.4%	853	9.3%	3,465	10.6%
\$50,000 - \$74,999	489	14.7%	1,345	14.7%	5,706	17.5%
\$75,000 - \$99,999	492	14.8%	1,307	14.2%	4,679	14.3%
\$100,000 - \$149,999	692	20.9%	1,729	18.8%	6,459	19.8%
\$150,000 - \$199,999	440	13.3%	1,268	13.8%	3,304	10.1%
\$200,000+	367	11.1%	1,093	11.9%	2,718	8.3%
Median Household Income	\$90,287		\$88,763		\$78,365	
Average Household Income	\$113,049		\$114,838		\$99,960	
Per Capita Income	\$40,252		\$41,071		\$33,848	

2020 Households by Income	1 mile		3 miles		5 miles	
	Number	Percent	Number	Percent	Number	Percent
<\$15,000	167	4.9%	428	4.6%	1,642	5.0%
\$15,000 - \$24,999	115	3.4%	381	4.1%	1,334	4.0%
\$25,000 - \$34,999	142	4.2%	389	4.1%	2,036	6.1%
\$35,000 - \$49,999	248	7.3%	767	8.2%	3,180	9.6%
\$50,000 - \$74,999	421	12.4%	1,178	12.6%	5,156	15.6%
\$75,000 - \$99,999	492	14.5%	1,347	14.4%	5,067	15.3%
\$100,000 - \$149,999	788	23.2%	1,917	20.4%	7,253	21.9%
\$150,000 - \$199,999	600	17.6%	1,676	17.9%	4,303	13.0%
\$200,000+	430	12.6%	1,298	13.8%	3,134	9.5%
Median Household Income	\$104,840		\$103,470		\$89,058	
Average Household Income	\$130,117		\$131,992		\$113,454	
Per Capita Income	\$46,664		\$47,383		\$38,473	

**Data Note:** Income is expressed in current dollars.

**Source:** U.S. Census Bureau, Census 2010 Summary File 1. Esri forecasts for 2015 and 2020.



# Demographic and Income Comparison Profile

1150 State St, Lemont, Illinois, 60439  
Rings: 1, 3, 5 mile radii

Prepared by: Randolph Taylor MBA, CCIM,  
Latitude: 41.65859  
Longitude: -87.99988

2010 Population by Age	1 mile		3 miles		5 miles	
	Number	Percent	Number	Percent	Number	Percent
Age 0 - 4	454	5.0%	1,231	4.9%	6,178	6.4%
Age 5 - 9	614	6.8%	1,627	6.4%	7,083	7.4%
Age 10 - 14	745	8.2%	2,002	7.9%	7,544	7.8%
Age 15 - 19	723	8.0%	1,920	7.6%	7,390	7.7%
Age 20 - 24	478	5.3%	1,270	5.0%	5,543	5.8%
Age 25 - 34	787	8.7%	2,086	8.3%	11,148	11.6%
Age 35 - 44	1,211	13.4%	3,229	12.8%	13,485	14.0%
Age 45 - 54	1,737	19.2%	4,701	18.6%	15,442	16.1%
Age 55 - 64	1,202	13.3%	3,488	13.8%	11,555	12.0%
Age 65 - 74	673	7.4%	1,955	7.7%	6,090	6.3%
Age 75 - 84	303	3.3%	1,042	4.1%	3,120	3.2%
Age 85+	142	1.6%	692	2.7%	1,631	1.7%

2015 Population by Age	1 mile		3 miles		5 miles	
	Number	Percent	Number	Percent	Number	Percent
Age 0 - 4	414	4.6%	1,165	4.5%	5,917	6.1%
Age 5 - 9	503	5.6%	1,444	5.6%	6,459	6.6%
Age 10 - 14	681	7.5%	1,883	7.3%	7,371	7.6%
Age 15 - 19	659	7.3%	1,780	6.9%	6,609	6.8%
Age 20 - 24	512	5.7%	1,370	5.3%	5,957	6.1%
Age 25 - 34	960	10.6%	2,558	9.9%	12,065	12.4%
Age 35 - 44	991	10.9%	2,791	10.9%	12,417	12.8%
Age 45 - 54	1,572	17.4%	4,264	16.6%	14,202	14.6%
Age 55 - 64	1,452	16.0%	4,096	15.9%	13,058	13.4%
Age 65 - 74	822	9.1%	2,459	9.6%	7,938	8.2%
Age 75 - 84	342	3.8%	1,161	4.5%	3,432	3.5%
Age 85+	150	1.7%	751	2.9%	1,733	1.8%

2020 Population by Age	1 mile		3 miles		5 miles	
	Number	Percent	Number	Percent	Number	Percent
Age 0 - 4	409	4.4%	1,149	4.4%	5,851	6.0%
Age 5 - 9	462	5.0%	1,342	5.1%	6,168	6.3%
Age 10 - 14	577	6.3%	1,713	6.5%	6,957	7.1%
Age 15 - 19	616	6.7%	1,699	6.5%	6,562	6.7%
Age 20 - 24	443	4.8%	1,160	4.4%	4,971	5.1%
Age 25 - 34	1,069	11.6%	2,745	10.5%	12,432	12.7%
Age 35 - 44	1,082	11.7%	3,057	11.7%	13,163	13.4%
Age 45 - 54	1,323	14.3%	3,677	14.0%	12,909	13.1%
Age 55 - 64	1,610	17.5%	4,382	16.7%	13,592	13.8%
Age 65 - 74	1,018	11.0%	2,973	11.4%	9,457	9.6%
Age 75 - 84	468	5.1%	1,514	5.8%	4,356	4.4%
Age 85+	144	1.6%	776	3.0%	1,804	1.8%

Source: U.S. Census Bureau, Census 2010 Summary File 1. Esri forecasts for 2015 and 2020.



# Demographic and Income Comparison Profile

1150 State St, Lemont, Illinois, 60439  
Rings: 1, 3, 5 mile radii

Prepared by: Randolph Taylor MBA, CCIM,  
Latitude: 41.65859  
Longitude: -87.99988

2010 Race and Ethnicity	1 mile		3 miles		5 miles	
	Number	Percent	Number	Percent	Number	Percent
White Alone	8,671	95.6%	24,139	95.6%	77,133	80.2%
Black Alone	40	0.4%	130	0.5%	7,108	7.4%
American Indian Alone	12	0.1%	34	0.1%	225	0.2%
Asian Alone	133	1.5%	424	1.7%	3,844	4.0%
Pacific Islander Alone	1	0.0%	4	0.0%	24	0.0%
Some Other Race Alone	96	1.1%	250	1.0%	6,013	6.3%
Two or More Races	118	1.3%	261	1.0%	1,861	1.9%
Hispanic Origin (Any Race)	498	5.5%	1,314	5.2%	15,450	16.1%

2015 Race and Ethnicity	1 mile		3 miles		5 miles	
	Number	Percent	Number	Percent	Number	Percent
White Alone	8,613	95.1%	24,453	95.1%	76,499	78.7%
Black Alone	37	0.4%	131	0.5%	7,384	7.6%
American Indian Alone	12	0.1%	35	0.1%	237	0.2%
Asian Alone	154	1.7%	506	2.0%	4,342	4.5%
Pacific Islander Alone	1	0.0%	4	0.0%	32	0.0%
Some Other Race Alone	108	1.2%	289	1.1%	6,597	6.8%
Two or More Races	132	1.5%	304	1.2%	2,066	2.1%
Hispanic Origin (Any Race)	558	6.2%	1,511	5.9%	16,949	17.4%

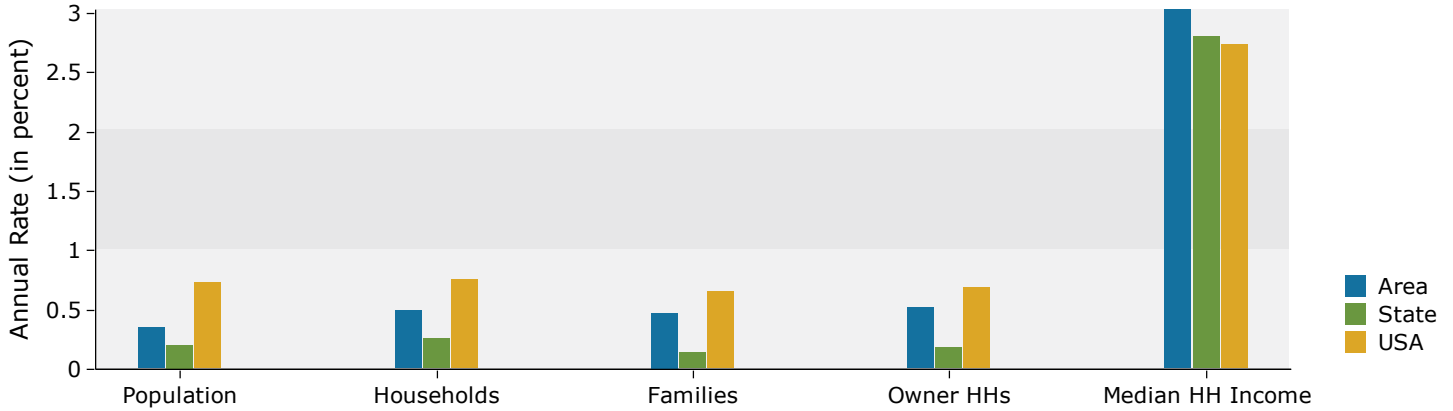
  

2020 Race and Ethnicity	1 mile		3 miles		5 miles	
	Number	Percent	Number	Percent	Number	Percent
White Alone	8,717	94.5%	24,734	94.4%	75,925	77.3%
Black Alone	35	0.4%	132	0.5%	7,574	7.7%
American Indian Alone	13	0.1%	39	0.1%	254	0.3%
Asian Alone	185	2.0%	600	2.3%	4,797	4.9%
Pacific Islander Alone	1	0.0%	6	0.0%	38	0.0%
Some Other Race Alone	123	1.3%	336	1.3%	7,358	7.5%
Two or More Races	147	1.6%	341	1.3%	2,277	2.3%
Hispanic Origin (Any Race)	641	7.0%	1,775	6.8%	19,077	19.4%

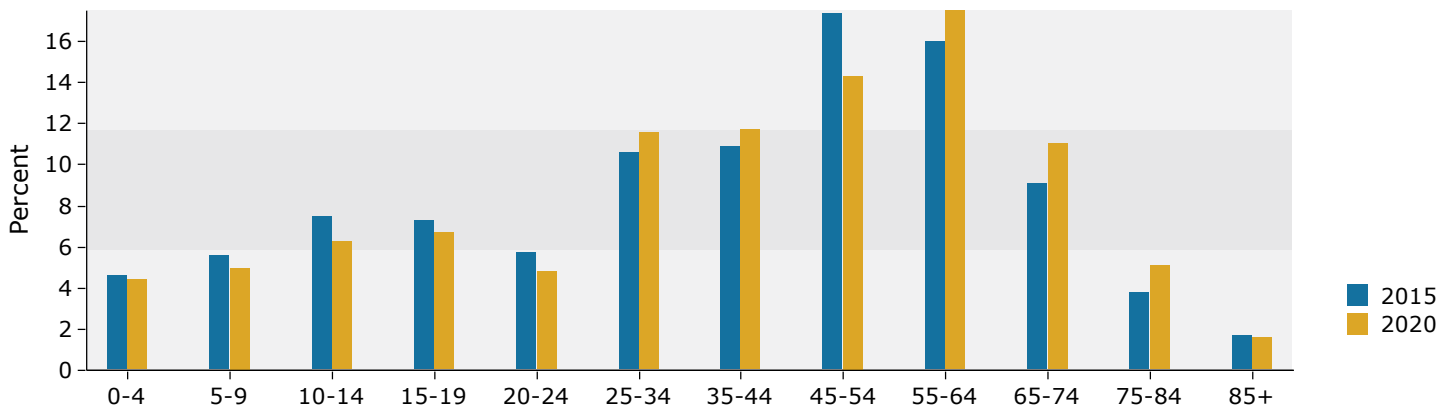
Source: U.S. Census Bureau, Census 2010 Summary File 1. Esri forecasts for 2015 and 2020.

## 1 mile

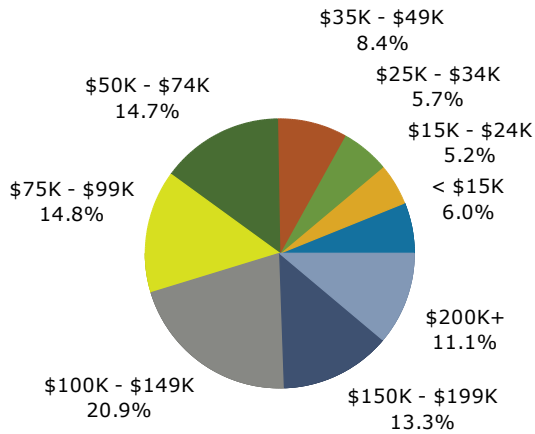
### Trends 2015-2020



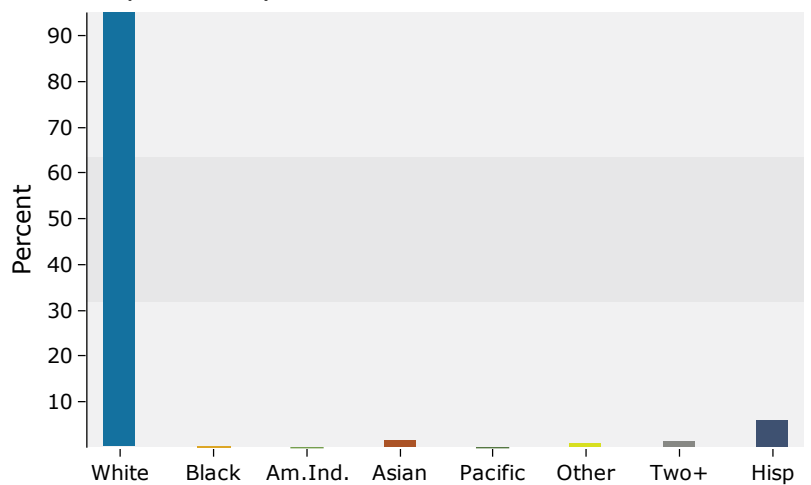
### Population by Age



### 2015 Household Income



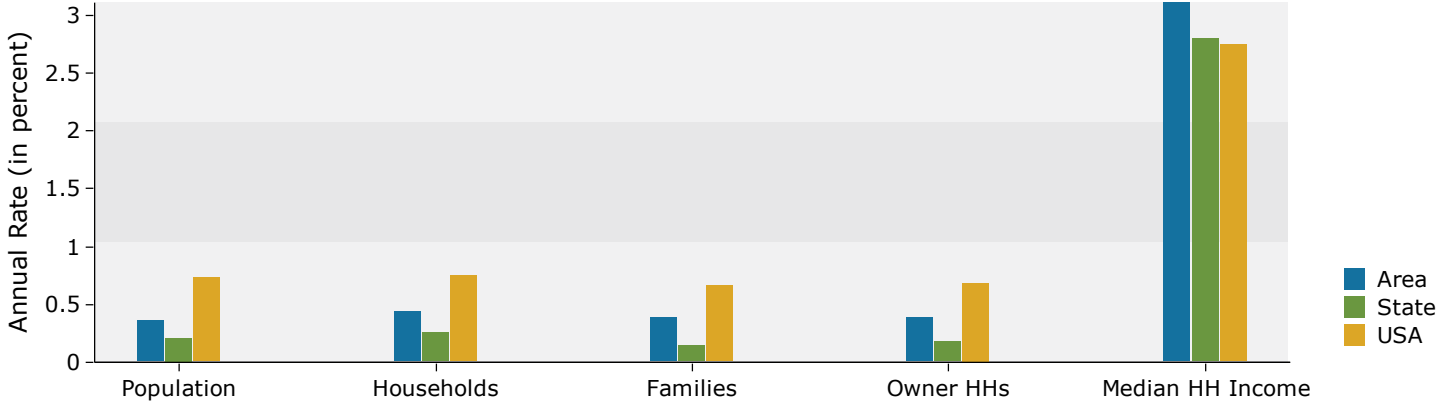
### 2015 Population by Race



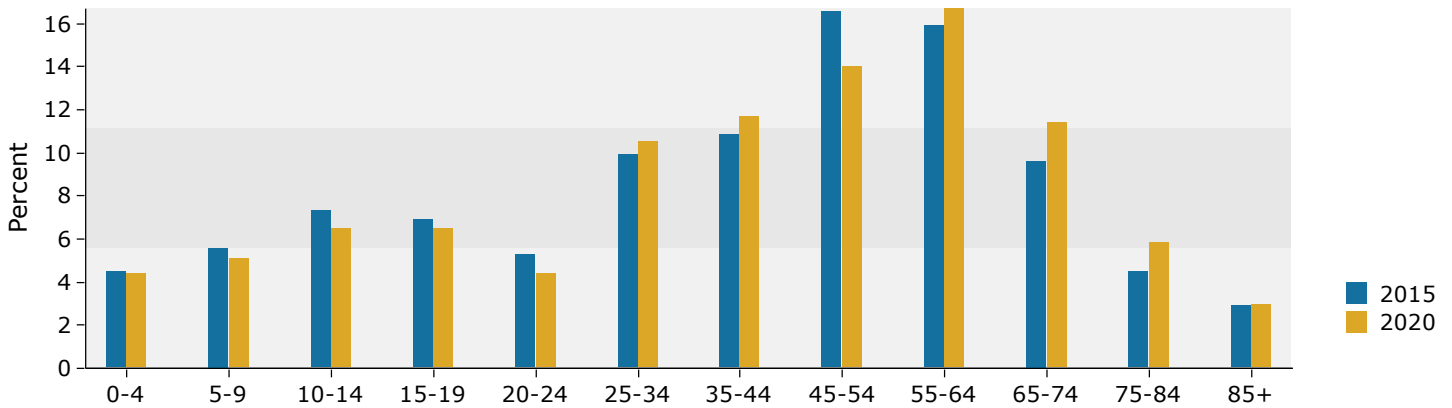
Source: U.S. Census Bureau, Census 2010 Summary File 1. Esri forecasts for 2015 and 2020.

## 3 miles

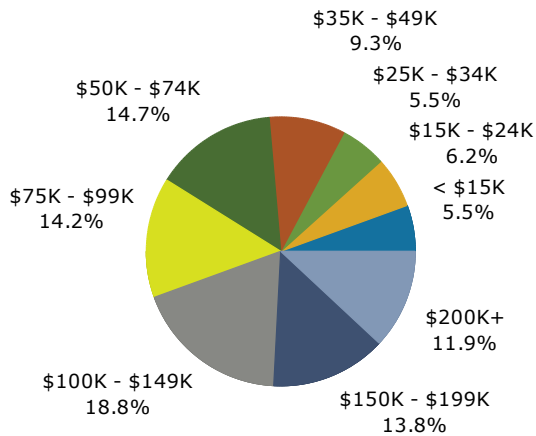
### Trends 2015-2020



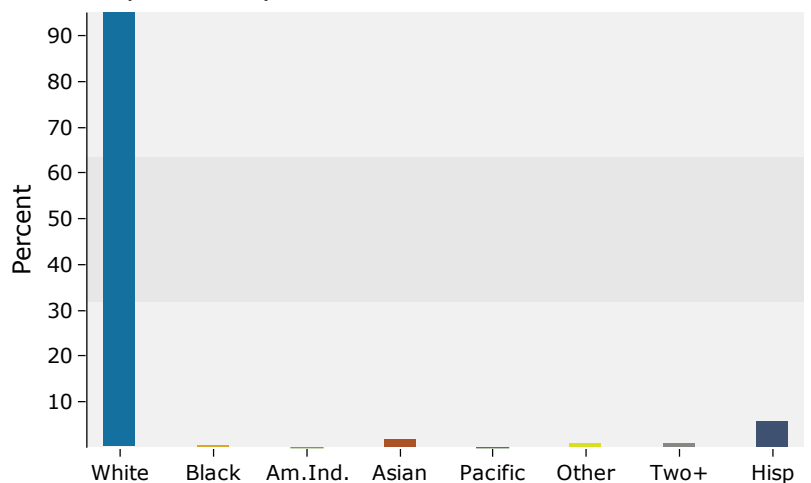
### Population by Age



### 2015 Household Income



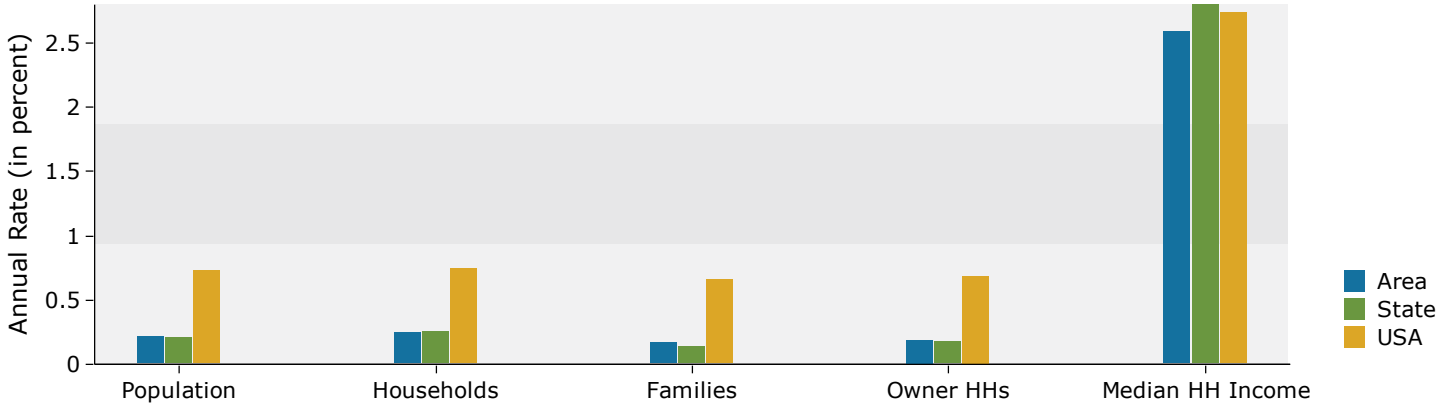
### 2015 Population by Race



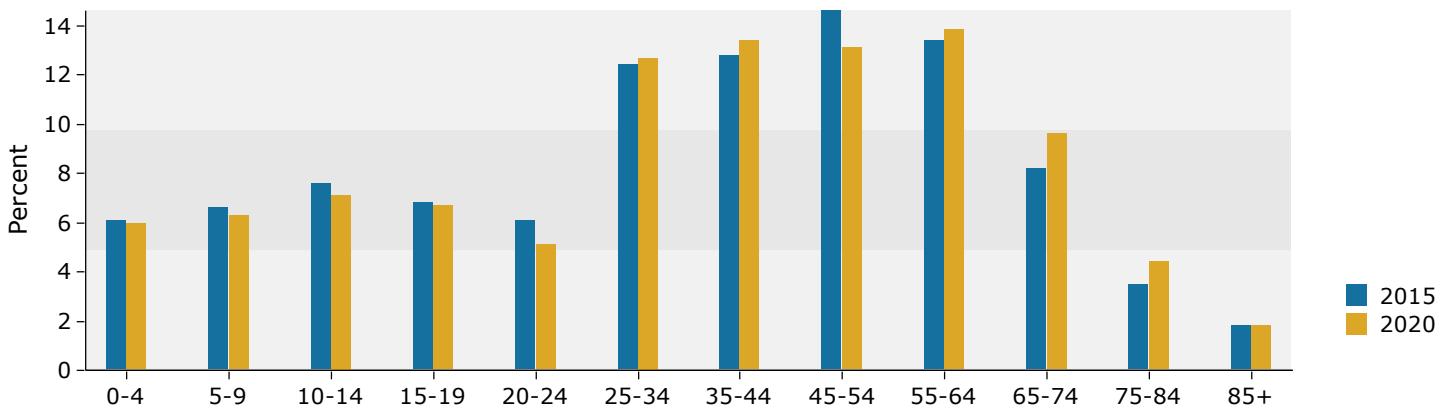
Source: U.S. Census Bureau, Census 2010 Summary File 1. Esri forecasts for 2015 and 2020.

## 5 miles

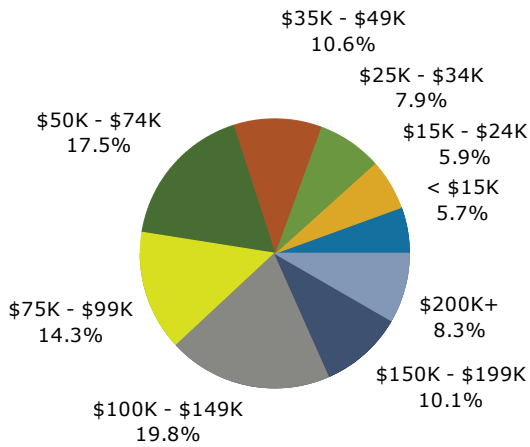
### Trends 2015-2020



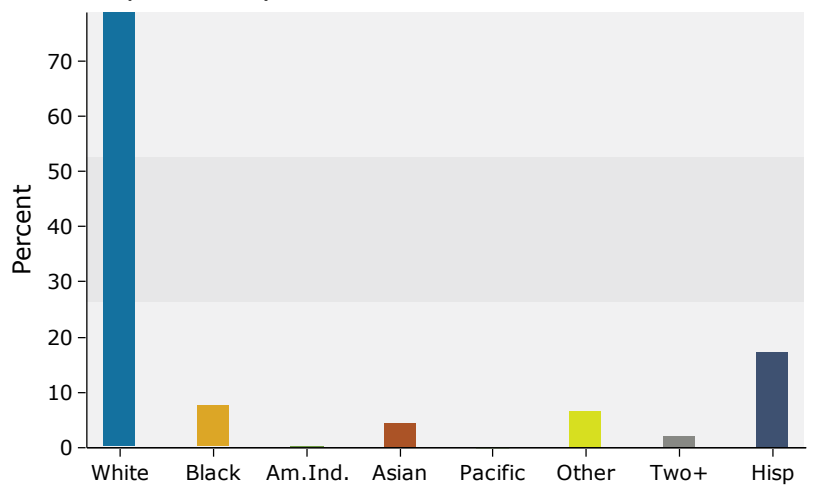
### Population by Age



### 2015 Household Income



### 2015 Population by Race



Source: U.S. Census Bureau, Census 2010 Summary File 1. Esri forecasts for 2015 and 2020.