



Conveniently Located to I-93 - Directly Adjacent to the New Park & Ride at Exit 2

Located in TAX FREE Southern NH!

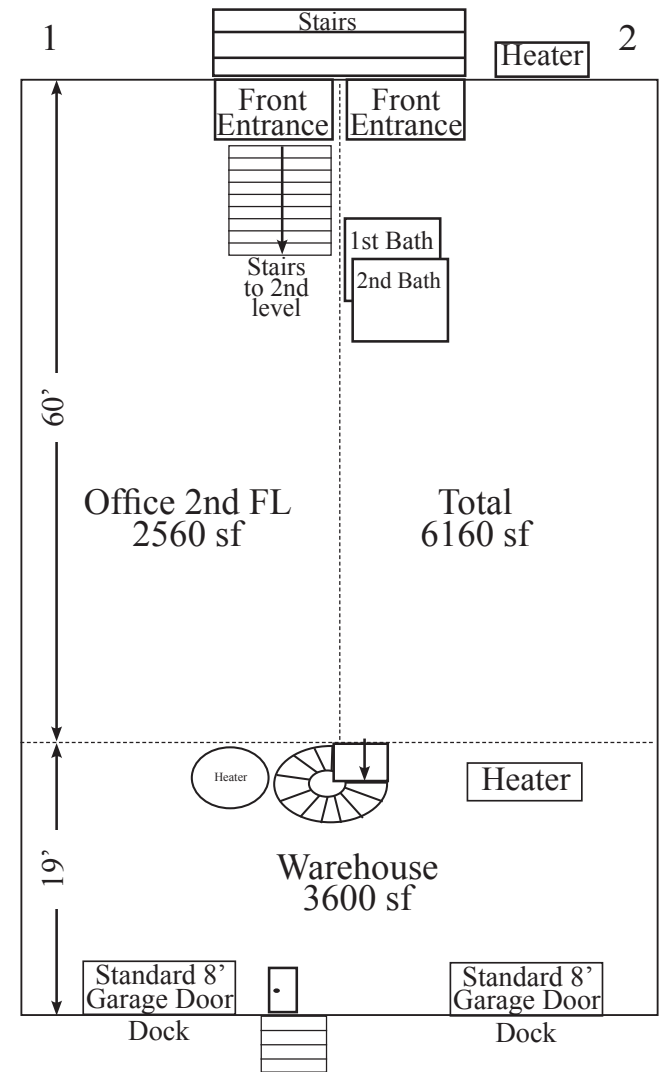
Unit 1/2:

Total sf - 6160
R&D warehouse/office and Manufacturing
Newly Remodeled Offices
Corporate Offices 2nd Floor
Manufacturing 1st floor

Gas heat. Propane
Water Included
Sprinkler System
Air conditioning
Cat 6 for phone and computer
Multiple bathrooms
High speed T1 internet connection
Ample parking

Outstanding Features:

500 Amp electrical service, three phase
19 foot ceiling height
(2) 8 foot high loading dock door



[CLICK FOR MORE INFO!](#)



Dan Charest
Cell: 603 490-3595
Email: dan@galleryllc.com

Four Raymond Ave • Salem, NH
Unit 1-2