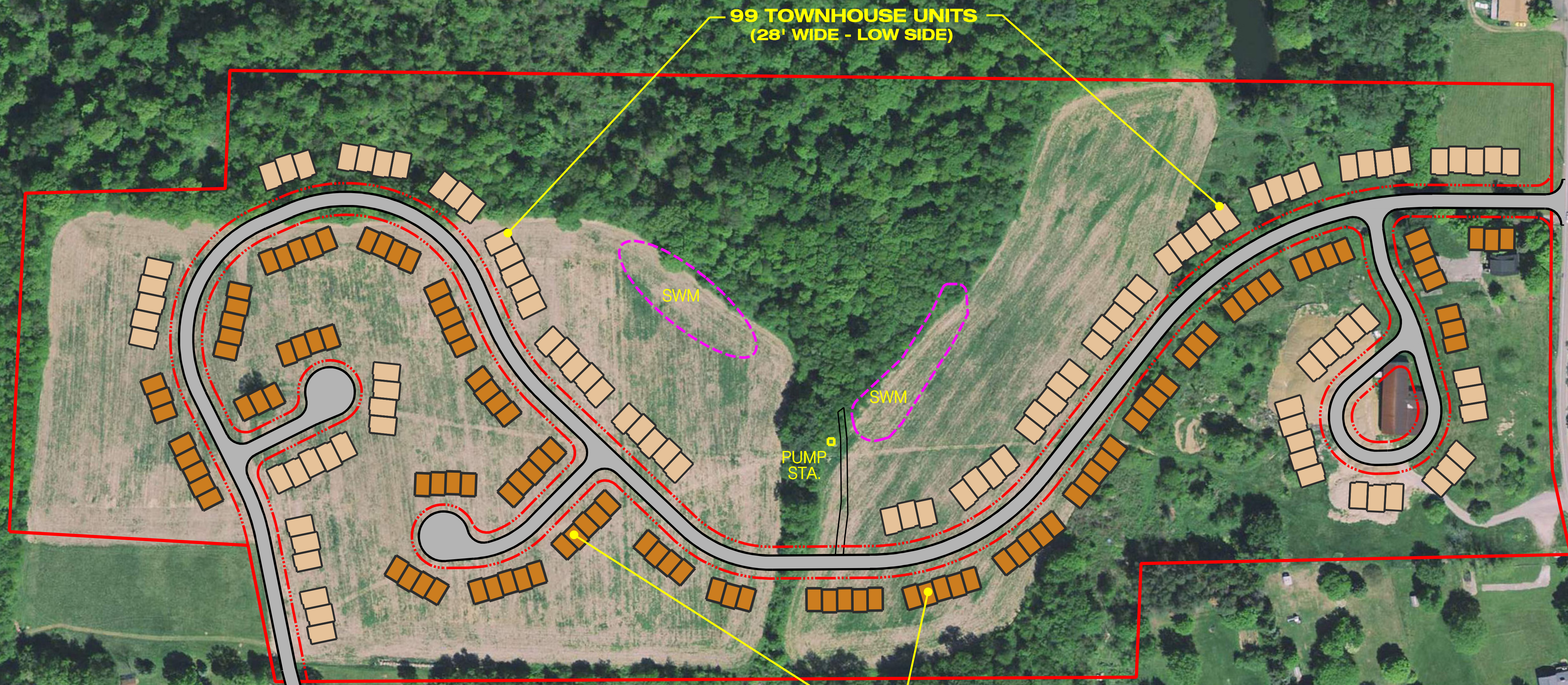


SCALE: 1" = 100'



99 TOWNHOUSE UNITS
(28' WIDE - LOW SIDE)

113 TOWNHOUSE UNITS
(24' WIDE - HIGH SIDE)

REVISIONS:



588 Locust Place
2nd Floor
Chippewa Township, PA 18828
Phone: 610-741-2280
Fax: 610-741-2288
Email: vm@vmitzel.com

P.M. DAL
D.B. DAL
C.R.

37th STREET EXTENSION
CHIPPEWA TOWNSHIP, BEAVER COUNTY PA

PREPARED FOR:
212 UNIT TOWNHOUSE SCHEME

ISSUE DATE: 11-20-14
JOB NO. 2013-103