



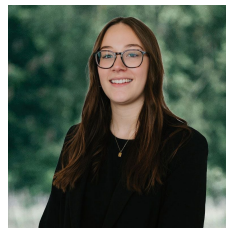
32 Main Road Bakery Hill VIC



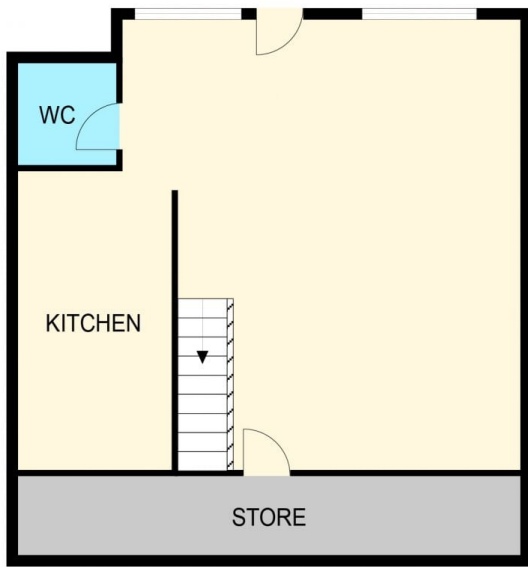
Positioned in the heart of CBD Ballarat, this building offers outstanding exposure and versatility. With dual entrances and the main access point off a busy public car park it provides excellent accessibility for staff and customers alike. Four allocated car spaces included in lease.

- * Office / Showroom / Retail - You Chose! (STCA)
- * 180m2 over 2 levels
- * Reception/showroom, boardroom, offices and meeting rooms
- * 2 kitchens and staff amenities
- * Air-conditioning and ducted gas heating
- * 4 On site parking spaces from rear street access
- * Terrific customer parking and few mins walk to CBD
- * Available Now!

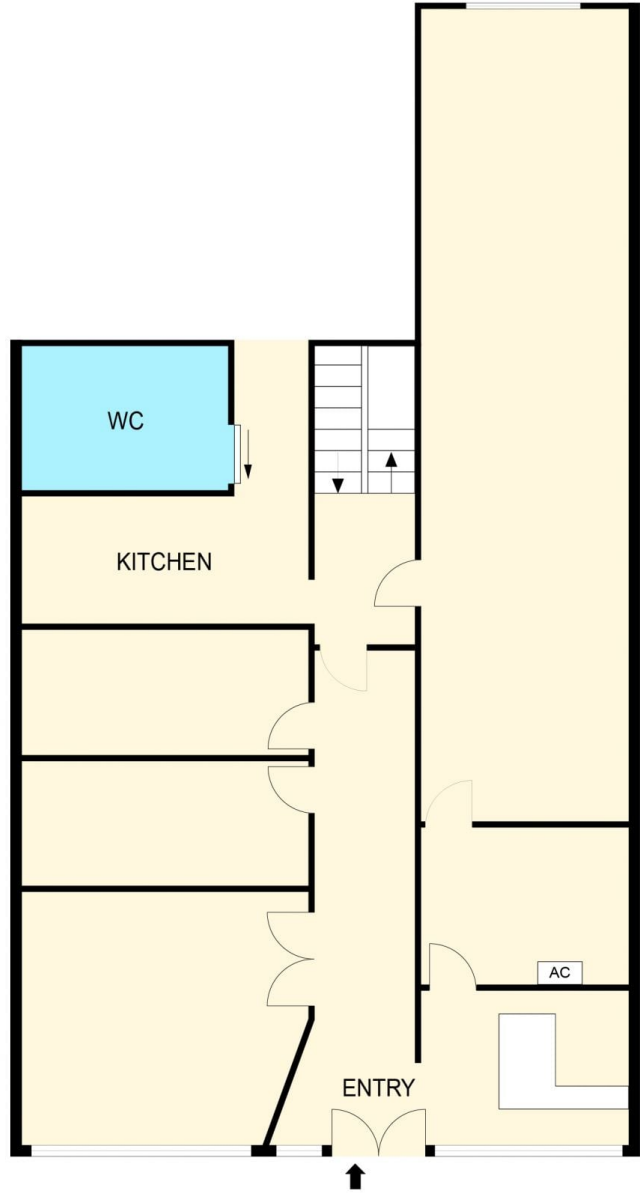
Price : Contact Agent pa
Building Size : 180 sqm
View : <https://www.ballaratrealestate.com.au/lease/vic/ballarat-western-district/bakery-hill/commercial/offices/8563855>



Kyra Smith
03 5331 2233
0478 435 725



BASEMENT



GROUND FLOOR

DISCLAIMER

PLANS SHOWN ARE FOR MARKETING PURPOSES ONLY, ALL DIMENSIONS ARE APPROXIMATE AND NOT TO SCALE. THEY ARE SUBJECT TO ERRORS AND INACCURACIES AND NO LIABILITY WILL BE ACCEPTED. INTERESTED PARTIES SHOULD MAKE THEIR OWN INQUIRES.

Ballarat
Real Estate

