



almondsburybusinesscentre



## TO LET

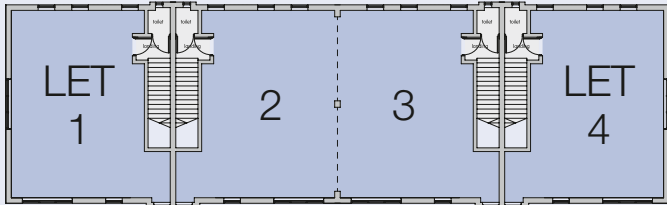
First Floor Offices

750 - 1,731 sq.ft.  
(69.9 - 160.8 sq.m.)

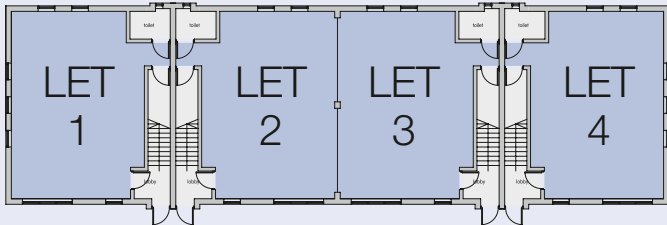
Bredon House

[www.almondsburybusinesscentre.co.uk](http://www.almondsburybusinesscentre.co.uk)

# Bredon House



First Floor Office Plan



Ground Floor Office Plan

## Specification

The building has been refurbished to a high standard to provide some of the best quality accommodation in the area.

The specification includes:

- New suspended ceilings with modern LED lighting
- Newly redecorated and re-carpeted with contemporary finishes
- Gas fired central heating
- Newly refurbished WCs
- Allocated on site parking
- New external doors
- EPC rating B (47)



	Sq.ft.	Parking Spaces
First Floor - Units 2/3	750 - 1,731	8



**alder king**  
PROPERTY CONSULTANTS  
0117 317 1000  
www.alderking.com

Tom Dugay  
tdugay@alderking.com  
Rebecca Harries  
rharries@alderking.com

**Hartnell TaylorCook**  
0117 923 9234  
htc.uk.com

Lizzie Boswell  
lizzie.boswell@htc.uk.com  
Natalie Bennett  
natalie.bennett@htc.uk.com

Important Notice. These particulars do not constitute any offer or contract and although they are believed to be correct their accuracy cannot be guaranteed and they are expressly excluded from any contract. HD2341/AK/HTC/Hollister 10/19.