

## Lot 16 - Benchmark Corporate Park Central Fort Myers, FL



**LOCATION:** 4775 Laredo Avenue, Fort Myers, FL 33905

**STRAP #:** 16-44-25-P4-00300.016, 16-44-25-P4-00300.16A, 16-44-25-P4-00300.016B

**ZONING:** City of Fort Myers Light Industrial (I-L)

**UTILITIES:** City of Fort Myers Water & Sewer, FP&L

**SIZE:** 9.66± acres

**PRICE:** \$2,105,000

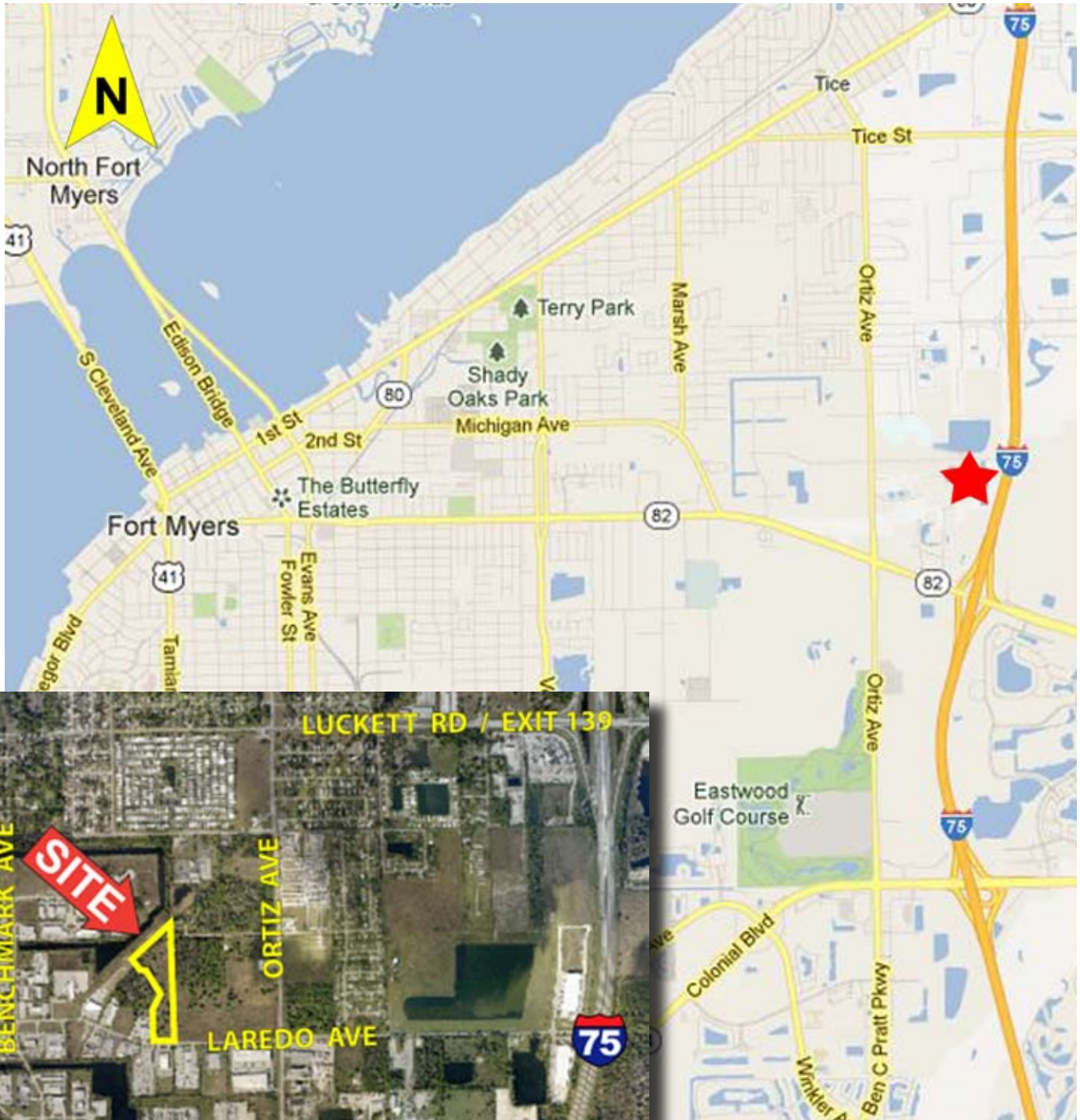
**DETAILS:** This is one of the last large parcels in Benchmark Corporate Park. It is ideally situated to serve all of Lee County, is located approximately halfway between Naples and Punta Gorda, and offers quick and easy access to I-75. City of Fort Myers water and sewer to the site and Fire Station #4 is located in Benchmark Corporate Park.

**First Capital  
Realty Inc.**

**For details on this property, call Jack Burges  
PH (239) 218-6108 or email [firstcaprealty@comcast.net](mailto:firstcaprealty@comcast.net)**

P.O. Box 1503 • Fort Myers, FL 33902 • PH 239-218-6107 • FAX 239-433-1501

# Lot 16 - Benchmark Corporate Park Central Fort Myers, FL



First Capital  
Realty Inc.