

7375 COMMERCE BLVD.
CANTON, MICHIGAN

INDUSTRIAL FOR LEASE
66,013 Square Feet Available



**SIGNATURE
ASSOCIATES**
KNOW SIGNATURE | KNOW RESULTS

KOPPERNICK CORPORATE PARK



PROPERTY FEATURES

- 66,013 square feet available
- 6,013 square feet of office
- 24' clear height
- (1) 12x14 grade level door, (6) truckwells
- Zoned Industrial
- 135 parking spaces
- 2,500 amps, 480 volts, 3-phase
- Exceptional corporate image manufacturing building
- Prime location with unparalleled I-275 visibility
- Lease Rate: \$6.25/sq.ft. NNN



For more information, please contact:

BRAD VIERGEVER
(248) 799 3146

bviergever@signatureassociates.com

GARY SALLEN
(248) 948 0105

gsallen@signatureassociates.com

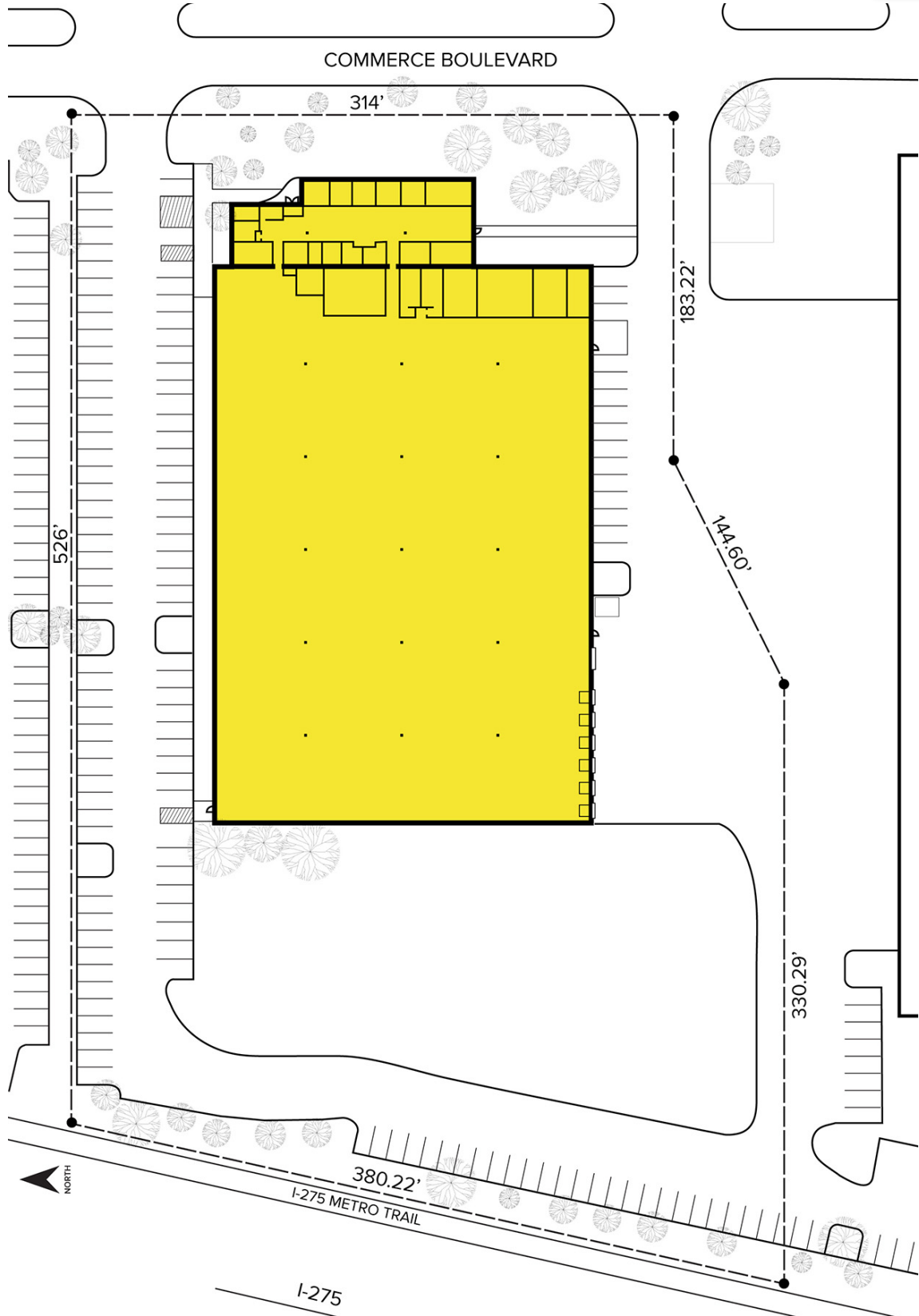
SIGNATURE ASSOCIATES
One Towne Square, Suite 1200
Southfield, MI 48076
www.signatureassociates.com

7375 Commerce Blvd. – Canton, Michigan

Industrial For Lease

66,013
Square Feet
AVAILABLE

Site Plan



For more information, please contact:

BRAD VIERGEVER

(248) 799 3146

bviergever@signatureassociates.com

GARY SALLEN

(248) 948 0105

gsallen@signatureassociates.com

SIGNATURE ASSOCIATES

One Towne Square, Suite 1200

Southfield, MI 48076

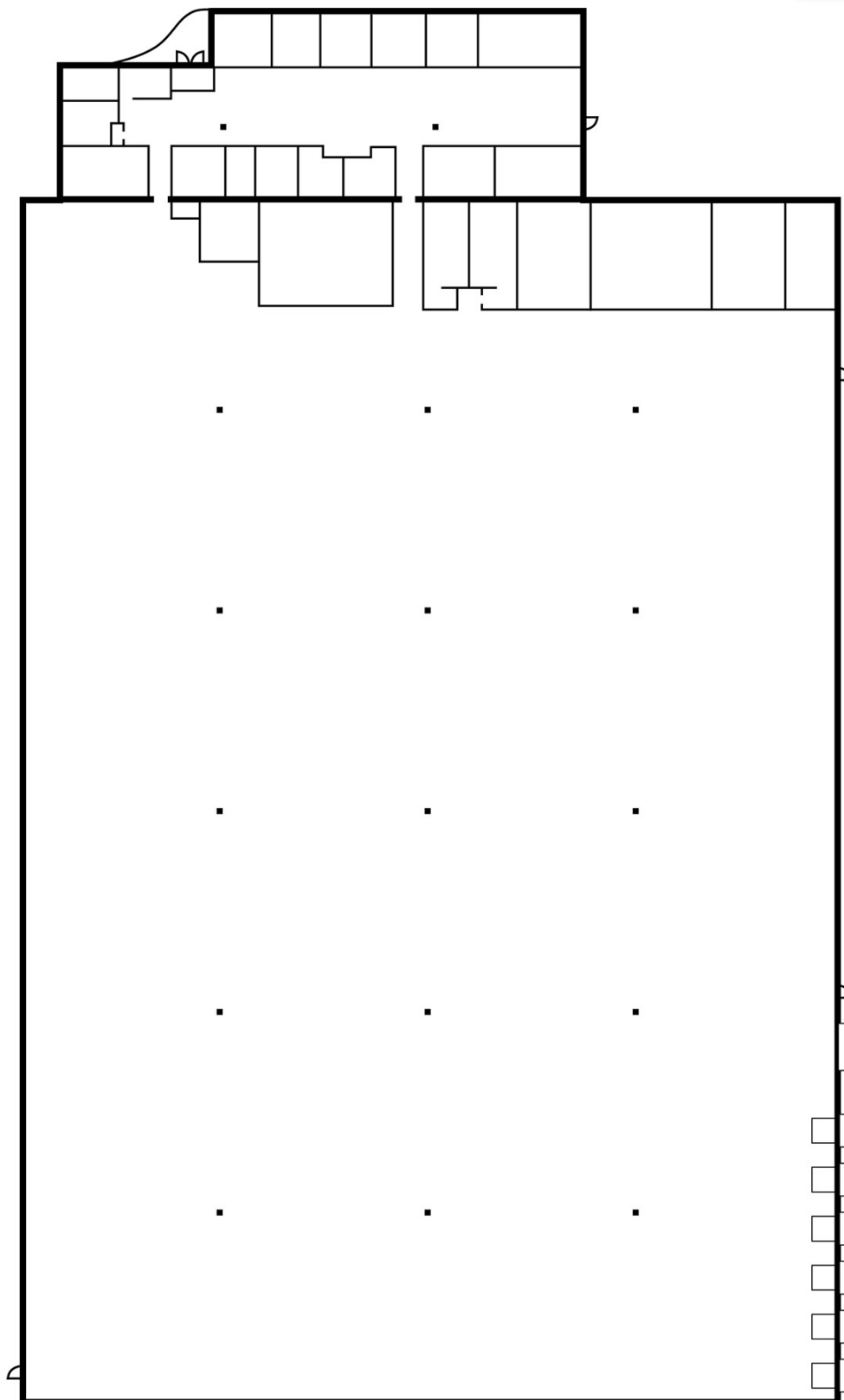
www.signatureassociates.com

7375 Commerce Blvd. – Canton, Michigan

Industrial For Lease

66,013
Square Feet
AVAILABLE

Floor Plan



For more information, please contact:

BRAD VIERGEVER

(248) 799 3146

bviergever@signatureassociates.com

GARY SALLEN

(248) 948 0105

gsallen@signatureassociates.com

SIGNATURE ASSOCIATES

One Towne Square, Suite 1200

Southfield, MI 48076

www.signatureassociates.com

7375 Commerce Blvd. – Canton, Michigan

Industrial For Lease

66,013
Square Feet
AVAILABLE

Aerial



For more information, please contact:

BRAD VIERGEVER

(248) 799 3146

bviergever@signatureassociates.com

GARY SALLEN

(248) 948 0105

gsallen@signatureassociates.com

SIGNATURE ASSOCIATES

One Towne Square, Suite 1200

Southfield, MI 48076

www.signatureassociates.com