



**MEDICAL ASSET
MANAGEMENT**
MEDICAL PROPERTY SPECIALISTS



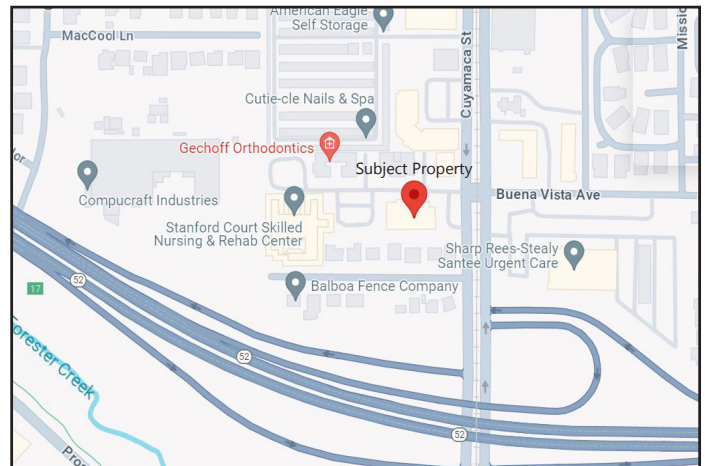
Santee Medical Center | 8760 Cuyamaca Street | Santee, CA
Medical Office Suites For Lease

Available Suites	Sq. Ft.	Rental Rate
Suite 205	1,631 RSF	\$1.80/SF NNN
Suite 207	1,071 RSF	\$1.80/SF NNN

Features

- Centrally located in East San Diego County
- Conveniently located to 52 Freeway & Metrorail
- Flexible Floorplan
- New Landscaping
- New Smart AC Thermostat
- Renovated Parking Lot

Term 3 to 10 years



Contact

Alphonzo Hicks
(818) 616-7210
alphonzoh@medicalasset.com
DRE#: 02032369
www.medicalasset.com

Mitch Yankowitz
(310) 517-4861
mitchy@medicalasset.com
DRE#: 01360137

South Bay
201 Continental Blvd., Ste. 210
El Segundo, CA 90245

Downtown Los Angeles
1400 S. Grand Ave., Ste. 808
Los Angeles, CA 90015

San Fernando Valley
5411 Etiwanda Ave., Ste. 208
Tarzana, CA 91356

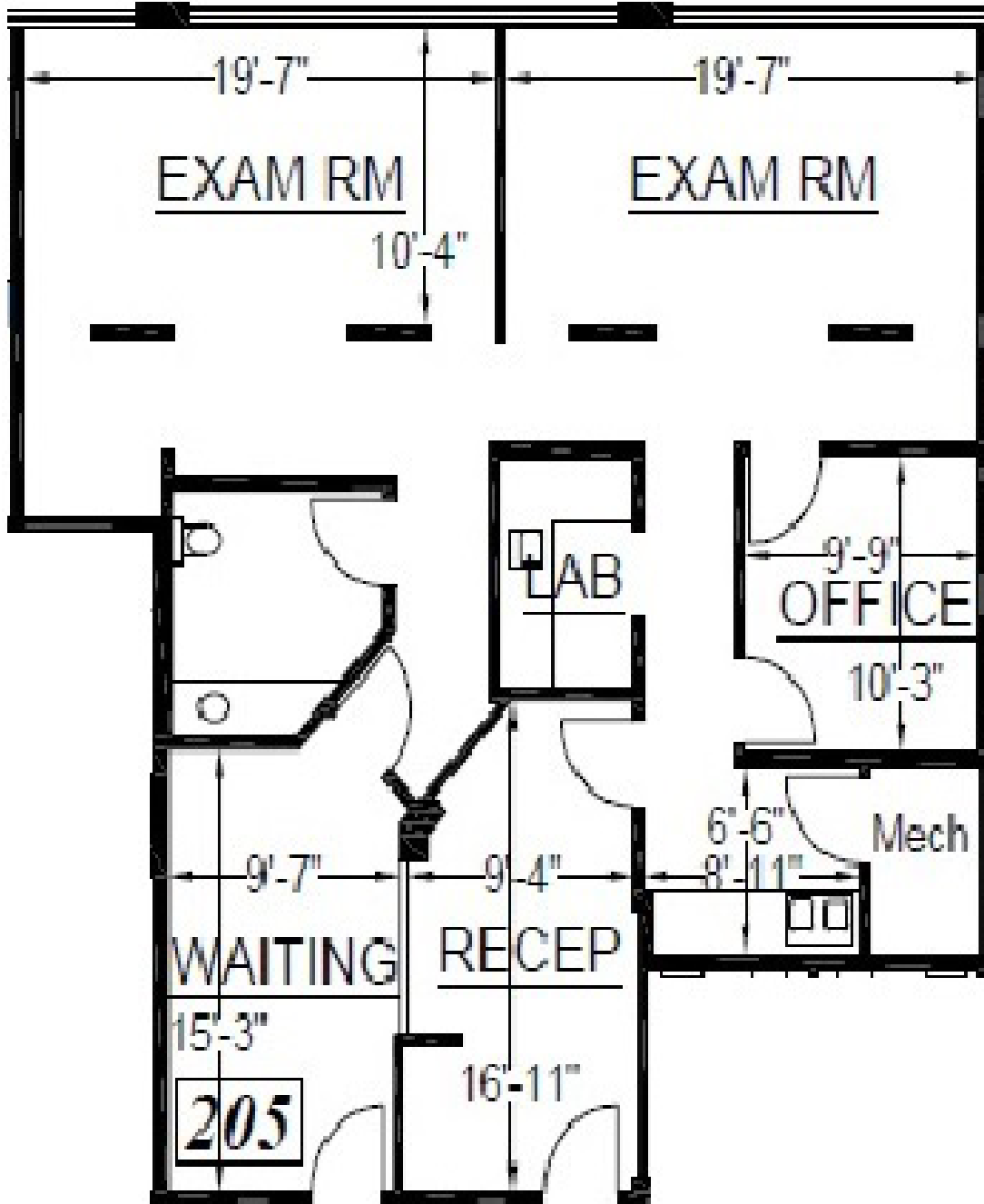
Long Beach
1040 Elm Ave., Ste. 308
Long Beach, CA 90813



**MEDICAL ASSET
MANAGEMENT**
MEDICAL PROPERTY SPECIALISTS

Santee Medical Center | 8760 Cuyamaca Street | Floorplans

Suite 205
1,631 RSF





**MEDICAL ASSET
MANAGEMENT**
MEDICAL PROPERTY SPECIALISTS

Santee Medical Center | 8760 Cuyamaca Street | Floorplans

Suite 207
1,071 RSF

