



Upper King Street District

68

**LINE STREET
Charleston, SC 29403**

FOR LEASE

ENTIRE FIRST FLOOR AVAILABLE | FREE ON-SITE PARKING



**Intelligent
Real Estate
Solutions**

Jeremy Willits
Office & Investment Services
C 843.270.9205
jeremy.willits@avisonyoung.com

Gerry Schauer, CCIM
Office & Investment Services
C 843.364.2055
gerry.schauer@avisonyoung.com



ENTIRE FIRST FLOOR

UNIT SIZE

1,226 sf

LEASE RATE

\$28.00

LEASE TYPE

Full Service

AVAILABLE

Immediately

NOTE : Individual Suites available on second floor - contact agent for details

68 Line Street, was completely and thoughtfully renovated into Charleston's first carbon neutral office building. The space features lots of natural light, soundproofing, ample parking, high ceilings, energy efficient LED lighting, building alarm and a shared kitchen. 2 parking space included in lease rate, additional on-site spaces available for \$150 per month per space. **High speed internet, utilities & janitorial are all included in the rent!**

Incredible location just one half block from Upper King Street and a quick hop on the crosstown to go in any direction.

Elliotborough, bordered by MUSC, the Crosstown and Upper King Street, has an eclectic mix of residential and retail with restaurants and coffee shops dotted throughout.

68 LINE STREET, CHARLESTON, SC 29403

SNAPSHOT

Tax Map

460-04-04-022

County

Charleston County

Municipality

Charleston

Year Built

1900 (Renovated in 2016)

Building Size

2,400 sf

Parking On Site

Ample

Floors

Two (2)



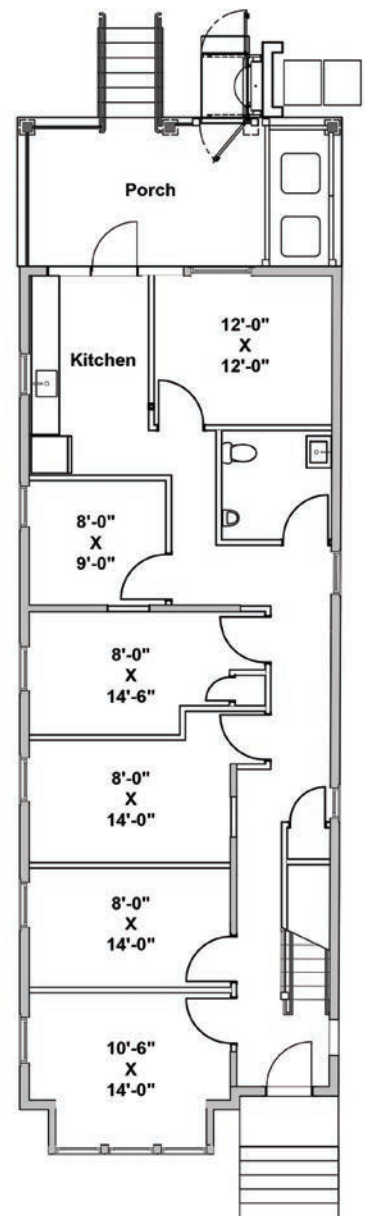
6 Private Offices with a Shared Kitchen and Restroom

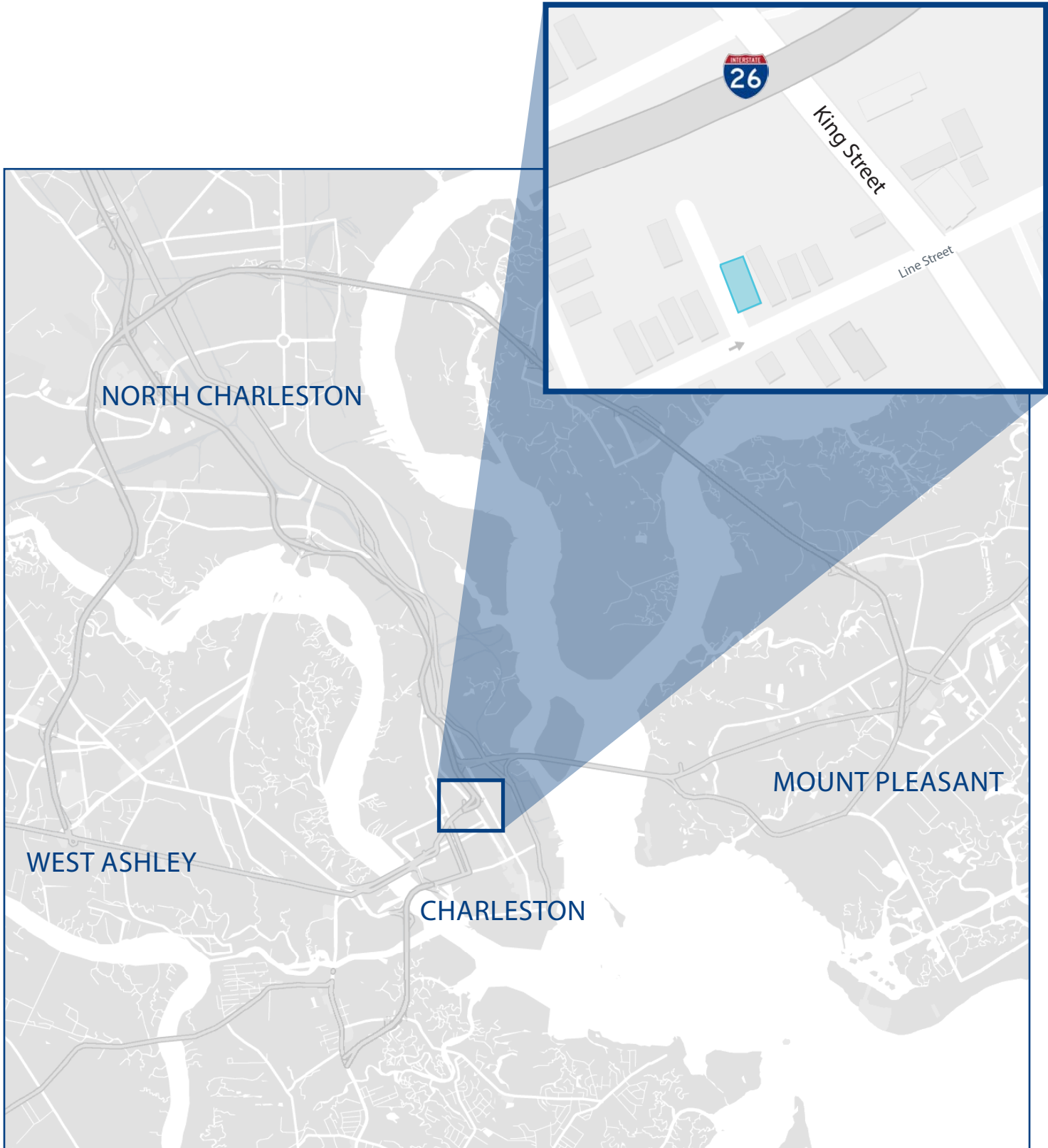
AMPLE ON SITE PARKING

Wheelchair Lift & ADA Complaint



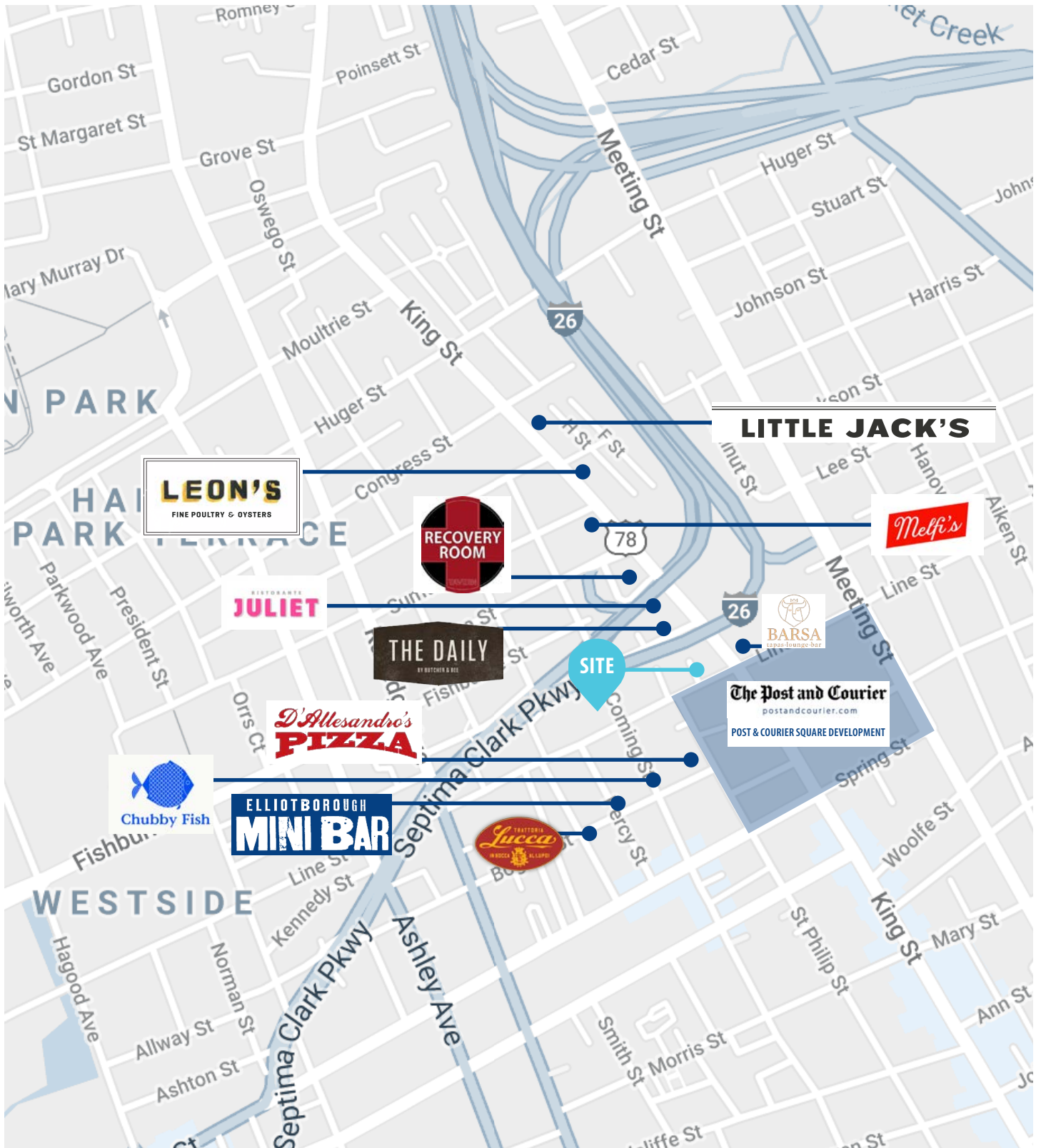
Parking Here






From Downtown Charleston, take St. Philip St. to Line St. After you make the right on Line St., property is half block down on the left. From I-26, follow signs for US-17 S/Savannah. Take Sheppard St. and then a left on Rutledge Ave. Next take a left on Line St. 68 Line will be on your left after you pass St. Philip St.

AMENITIES MAP





South Carolina Brokerage Team

Our South Carolina brokers deliver integrated real estate services to occupiers and investors. Through a dedicated principal-led business resources team, we provide solutions via tools, technology and expertise to support our clients however complex their challenges. Our approach is holistic and consistent. It starts with the Avison Young team's understanding of your business priorities, not with real estate transactions. For our clients, this means we produce customized, cost-effective solutions with speed, creativity and confidence.

Listing Broker



Jeremy Willits
Senior Vice President
Office & Investment Services
O 843.725.7200
D 843.973.8347
C 843.270.9205
jeremy.willits@avisonyoung.com



Gerry Schauer, CCIM
Vice President
Office & Investment Services
O 843.725.7200
D 843.973.8351
C 843.364.2055
gerry.schauer@avisonyoung.com

Support Team



Brady Dashiell
Brokerage Assistant
brady.dashiell@avisonyoung.com



Tate Walkush
Marketing Coordinator
tate.walkush@avisonyoung.com



Thank you.



Intelligent
Real Estate
Solutions

avisonyoung.com

1315 Ashley River Road
Charleston, South Carolina 29407
O 843.725.7200
F 843.725.7201
Avison Young - South Carolina, Inc.



Platinum
member