

THE  
SORTING  
OFFICE



TEMPLE FORTUNE NW11

## THE BUILDING

---

DESIGNED AND BUILT BY GODFREY LONDON WHO ARE RESPONSIBLE FOR CREATING SOME OF LONDON'S MOST EXQUISITE HOMES, THE SORTING OFFICE HAS BEEN METICULOUSLY CRAFTED TO REFLECT THE EXCEPTIONAL STANDARDS OF QUALITY FOR WHICH GODFREY LONDON ARE RENOWNED, SO MUCH SO, THAT THIS WILL BE THE NEW HOME FOR THEIR LONDON HEADQUARTERS.



# LOCATION

---

THE SITE PREVIOUSLY HOUSED GOLDERS GREEN SORTING OFFICE, DESIGNED BY THE MUNICIPAL ARCHITECT EDWARD CROPPER AND CONSTRUCTED IN 1919-1920 BY H FARROW CONTRACTORS FOR THE SUM OF £6331.

SITUATED IN THE NORTHWEST OF GREATER LONDON, THE LOCATION ON WHICH THE SORTING OFFICE WAS ORIGINALLY BUILT WAS PART OF THE SMALL HAMLET OF TEMPLE FORTUNE WITHIN A PREDOMINANTLY RURAL LANDSCAPE, WHICH THEN BECAME A POPULAR VICTORIAN SUBURB BY THE 1950'S. IMPROVED TRANSPORT LINKS TO CENTRAL LONDON AND THE ARRIVAL OF GOLDERS GREEN TUBE STATION FURTHER CONTRIBUTED TO THE GROWTH OF THE AREA, RESULTING IN CONSIDERABLE RESIDENTIAL DEVELOPMENT AND COMMERCIAL INFRASTRUCTURE.

FINCHLEY ROAD TO THE EAST OF THE SITE HAS SOME LARGER MUNICIPAL AND COMMERCIAL BUILDINGS, INTRODUCED JUST PRIOR TO THE CONSTRUCTION OF CROPPER'S SORTING OFFICE AND THE LOCATION HAS CONTINUED TO DEVELOP BOTH RESIDENTIALLY AND COMMERCIALY UNTIL NOW, MAKING IT A THRIVING PLACE FOR BOTH BUSINESSES AND HOMEOWNERS ALIKE.

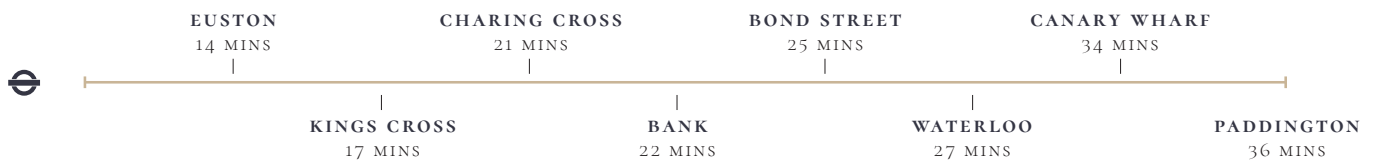
THE NEW BUILDING CREATES A CONTEMPORARY INTERPRETATION OF THE AREAS HISTORIC BUILDINGS, TAKING CUES FROM THE TRADITIONAL ARCHITECTUAL LANGUAGE OF CROPPERS ORIGINAL SORTING OFFICE AND OTHER HISTORIC BUILDINGS, INCLUDING THE FORMER GOLDERS GREEN POLICE STATION ON FINCHLEY ROAD.

# TRANSPORT

WITH EXCELLENT LINKS TO THE M1 AND M25 AS WELL AS THE LONDON RAIL AND BUS NETWORKS,  
THE SORTING OFFICE IS SUPERBLY CONNECTED FOR BOTH BUSINESS AND PLEASURE.

## BY RAIL

### GOLDERS GREEN STATION



## BY ROAD



Travel times and distances taken from TFL and google maps are approximate and correct at time of print. March 2019.



GOLDERS GREEN HIGH ST  
12 MIN 🚶



HAMPSTEAD VILLAGE  
13 MIN 🚶



WEST HAMPSTEAD  
14 MIN 🚶

## LOCAL AREA

---

THE AREA SURROUNDING THE SORTING OFFICE IN GOLDERS GREEN PROVIDES AN ARRAY OF CONNECTIONS AND PRACTICALITY IN THIS VIBRANT SUBURB OF NORTH LONDON. FIND YOURSELF IN WALKING DISTANCE TO THE NORTHERN LINE AND THE LIMITLESS OPPORTUNITIES WHICH LONDON HAS TO OFFER.



HAMPSTEAD HEATH  
22 MIN 🚶



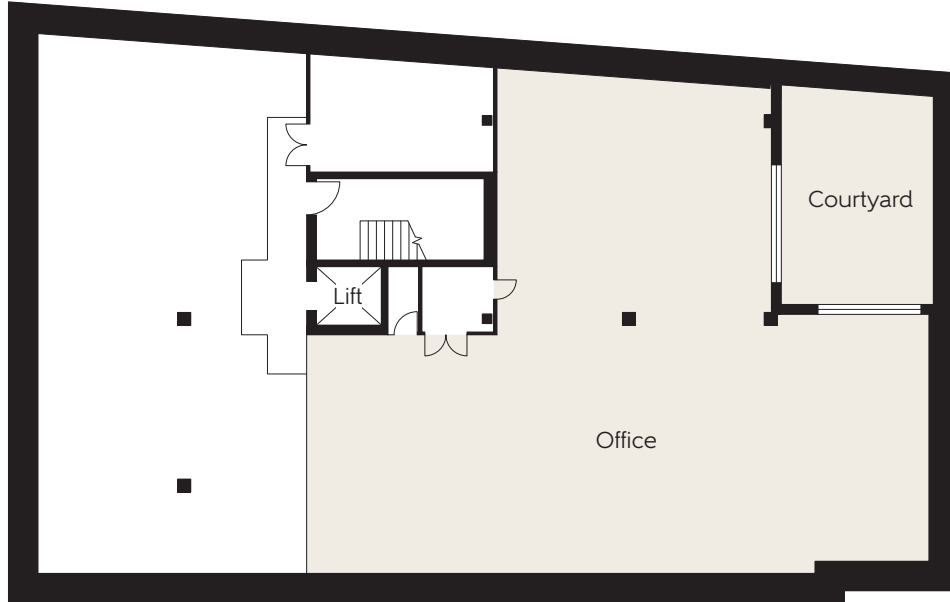
BRENT CROSS SHOPPING CENTRE  
26 MIN 🚶



HAMPSTEAD GOLF CLUB  
26 MIN 🚶

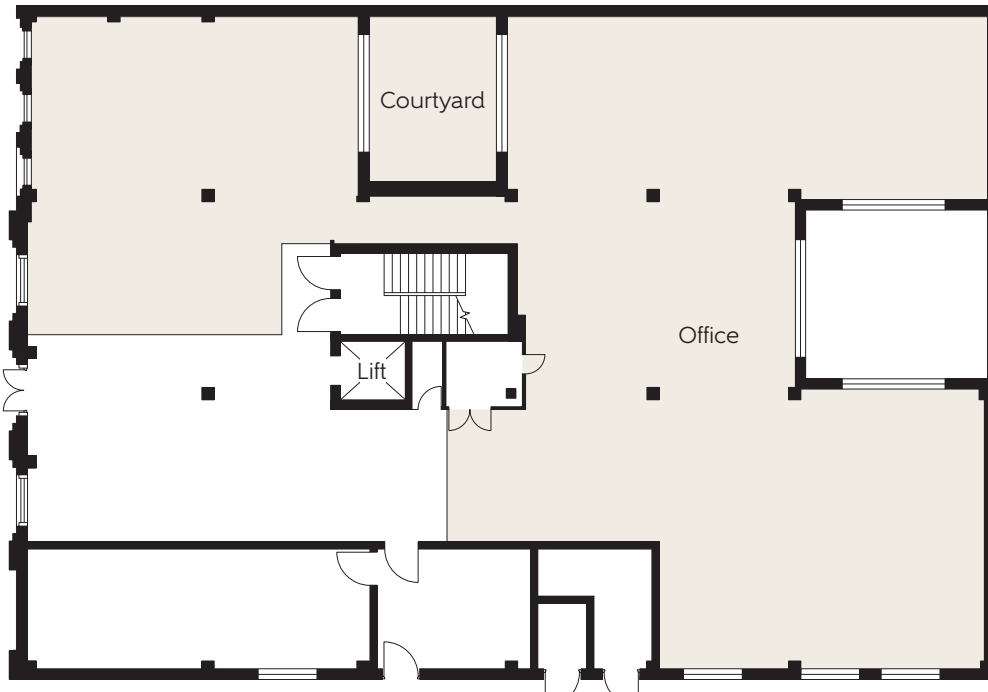
# FLOORPLANS

## BASEMENT



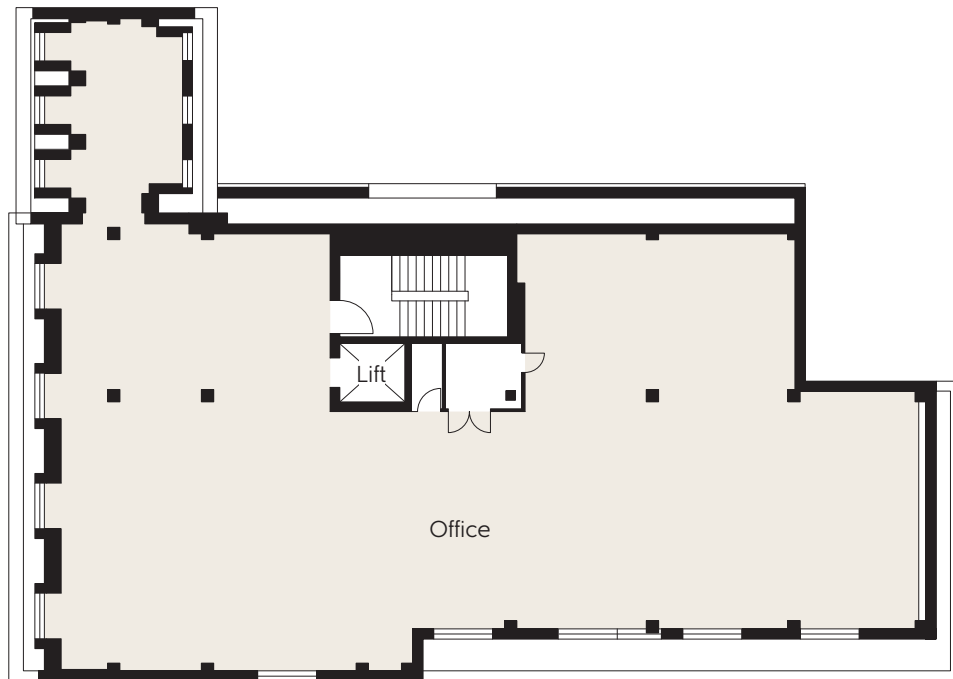
👤 UP TO 22 EMPLOYEE DESKS   🍷 PRIVATE KITCHEN FACILITY   🏠 2281 SQUARE FEET

## GROUND FLOOR



👤 UP TO 21 EMPLOYEE DESKS   🏠 4 PRIVATE OFFICES  
👥 2 MEETING ROOMS   🏢 BOARDROOM   🏠 3840 SQUARE FEET

## SECOND FLOOR



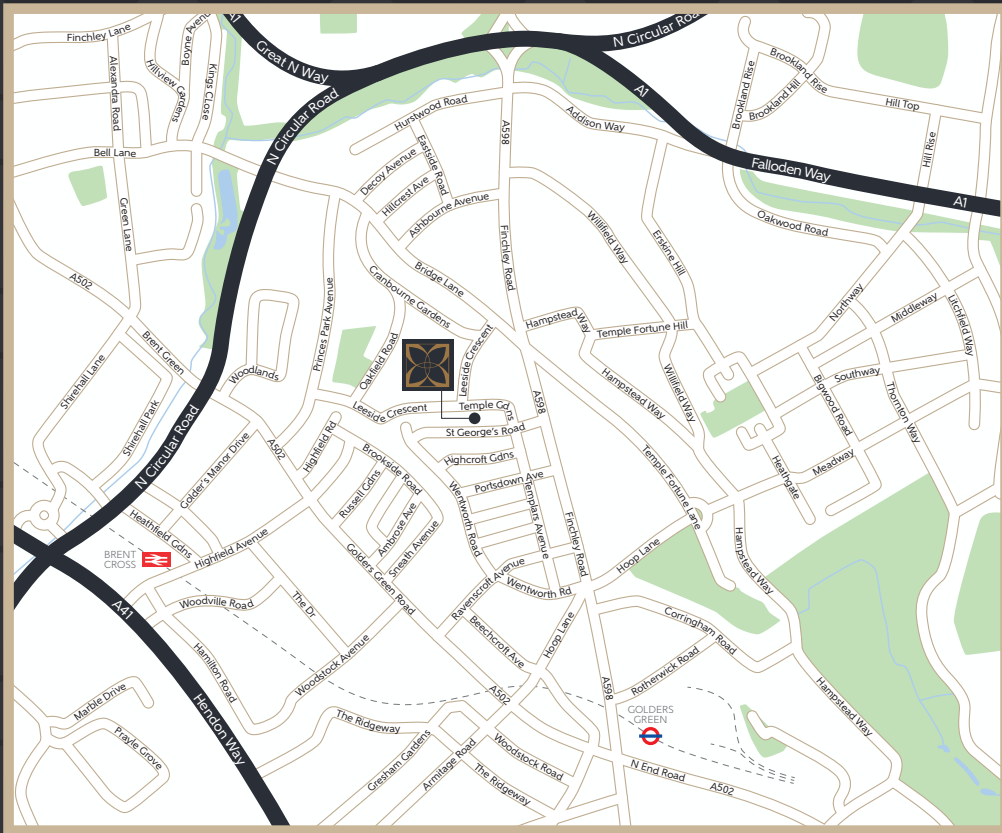
⌘ UP TO 46 EMPLOYEE DESKS    🔒 6 PRIVATE OFFICES    📏 3132 SQUARE FEET

## FACILITIES

AVAILABLE OVER THREE FLOORS, THE SORTING OFFICE BRINGS YOU AN EXCITING AND FLEXIBLE COMMERCIAL SPACE, WITH AN EXCEPTIONAL SPECIFICATION THROUGHOUT. COMMON AREA FACILITIES INCLUDE A RECEPTIONIST ON THE FRONT DESK, LIFT AND CYCLE STORE. FLOOR LAYOUTS CAN BE CONFIGURED TO SUIT THE NEEDS OF YOUR BUSINESS AND CAN INCLUDE PRIVATE OFFICES, MEETING ROOMS AND BOARDROOMS.



Images are of previous Godfrey Homes developments and are indicative of specification levels.



THE SORTING OFFICE  
ST GEORGE'S ROAD, LONDON  
NW11 0LR