



Mandale
Group

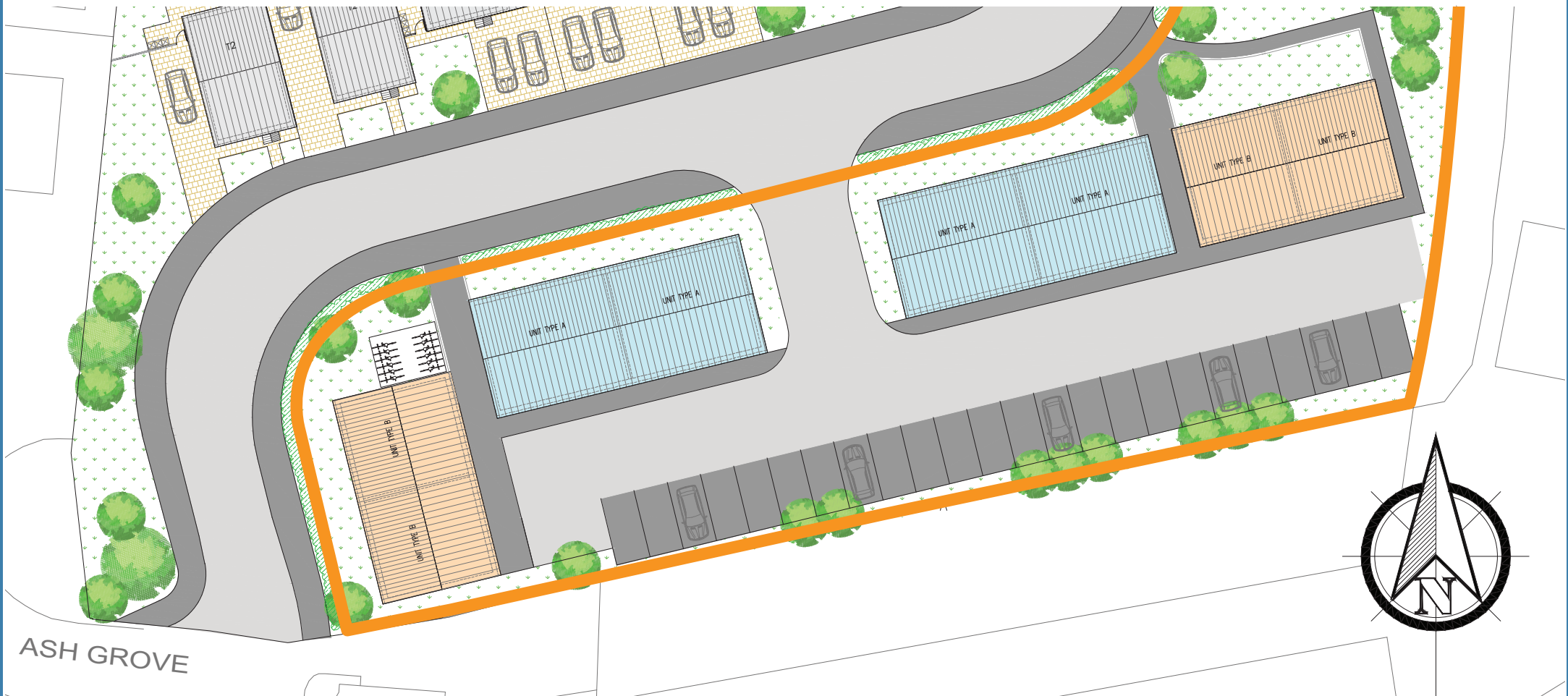
AVAILABLE NOW

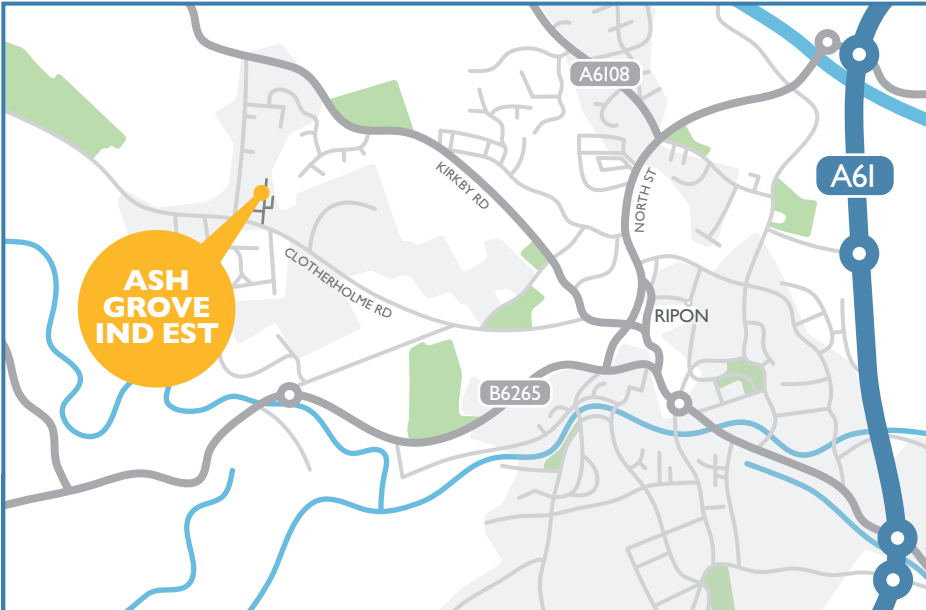
FOR SALE / TO LET LIGHT INDUSTRIAL UNITS

VARIOUS SIZES AVAILABLE

WWW.MANDALE.COM

ASH GROVE INDUSTRIAL ESTATE, RIPON, HG4 2DJ





VIEWING

Mandale

Joe Darragh
T: 01642 605 514
M: 07973 908 599
E: joe@mandale.com

CPNE

Tim Carter
T: 01642 704 930
M: 07904 622 278
E: tim@cpne.co.uk

Cushman & Wakefield

Scott Morrison
T: 0113 233 8875
M: 07701 397 451
E: scott.morrison@cushwake.com

LOCATION

Ash Grove Industrial estate is positioned on the West side of Ripon just off Clothierholme Road. With easy access to the A1 makes the estate perfectly located for businesses.

The estate is in a residential location and Ripon town centre is only a 5 minute drive away.

TRAVEL TIMES

London	221 miles	(4 hrs 12 mins)
Manchester	82.6 miles	(1 hr 48 mins)
Birmingham	144 miles	(2 hrs 33 mins)
Glasgow	192 miles	(3 hrs 20 mins)
Bristol	234 miles	(4 hrs 3 mins)
Edinburgh	189 miles	(3 hrs 36 mins)
Liverpool	112 miles	(2 hrs 14 mins)
Cardiff	253 miles	(4 hrs 30 mins)
Newcastle	69.3 miles	(1 hr 21 mins)

DESCRIPTION

There are 8 units available of which various sizes can be provided.

The units are For Sale or To Let.

They are built to a very high standard and will be very economic to run.

EPC

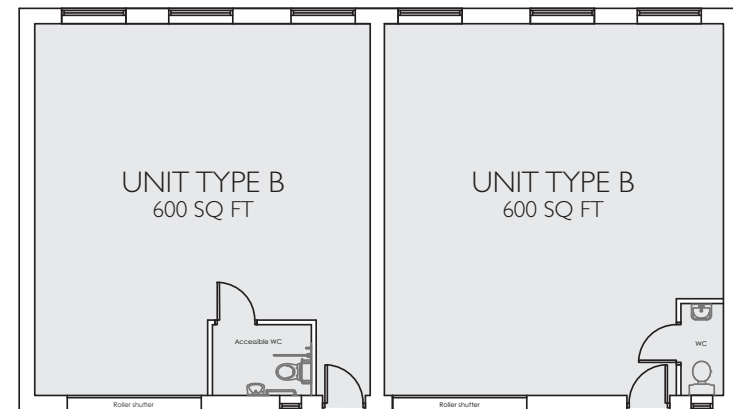
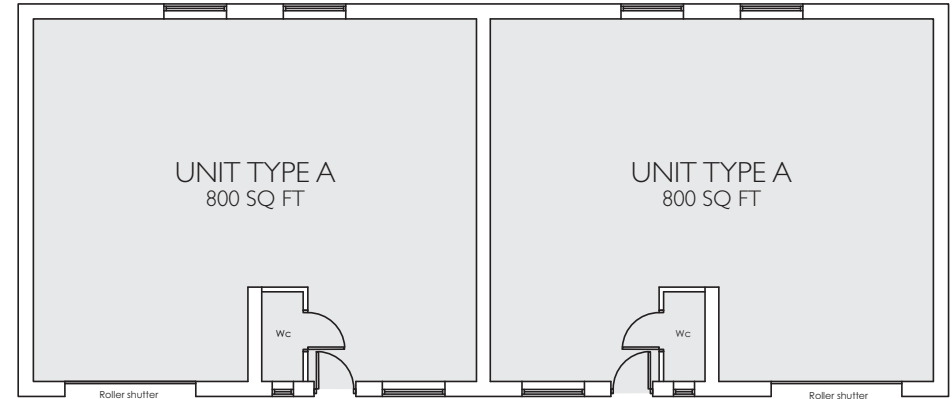
Upon completion we are expecting to have a high EPC rating.

CAR PARKING

The estate has the benefit of 24 communal car parking spaces.

PRICE

Price on Application.



Mandale
Group

01642 605 514

CONNECT
PROPERTY

01642 602001

www.cpne.co.uk

CUSHMAN &
WAKEFIELD

0113 233 7300

cushmanwakefield.co.uk

IMPORTANT NOTICE: These details were compiled April 2018 and whilst every reasonable effort has been made by Mandale Business, Connect Property North East and Cushman & Wakefield to ensure accuracy, interested parties are strongly advised to take appropriate steps to verify by independent inspection or enquiry all information for themselves and to take appropriate professional advice. (i) No description or information given about the property or its value, whether written or verbal or whether or not in these particulars ("information") may be relied upon as a statement of representation or fact. Mandale Business, Connect Property North East or Cushman & Wakefield nor their Agents have any authority to make any representation and accordingly any information given is entirely without responsibility on the part of Mandale Business, Connect Property North East and Cushman & Wakefield or the seller / lessor. (ii) Any photographs show only certain parts of the property at the time they were taken. Any areas, measurements or distances given are approximate only. (iii) Any reference to alterations to, or use of any part of the property is not a statement that any necessary planning, building regulations or other consent has been obtained. These matters must be verified by any intending buyer / lessee. (iv) Any buyer, lessee must satisfy himself by inspection or otherwise as to the correctness of any information given. Bowmans Design & Print 0113 272 0088.