

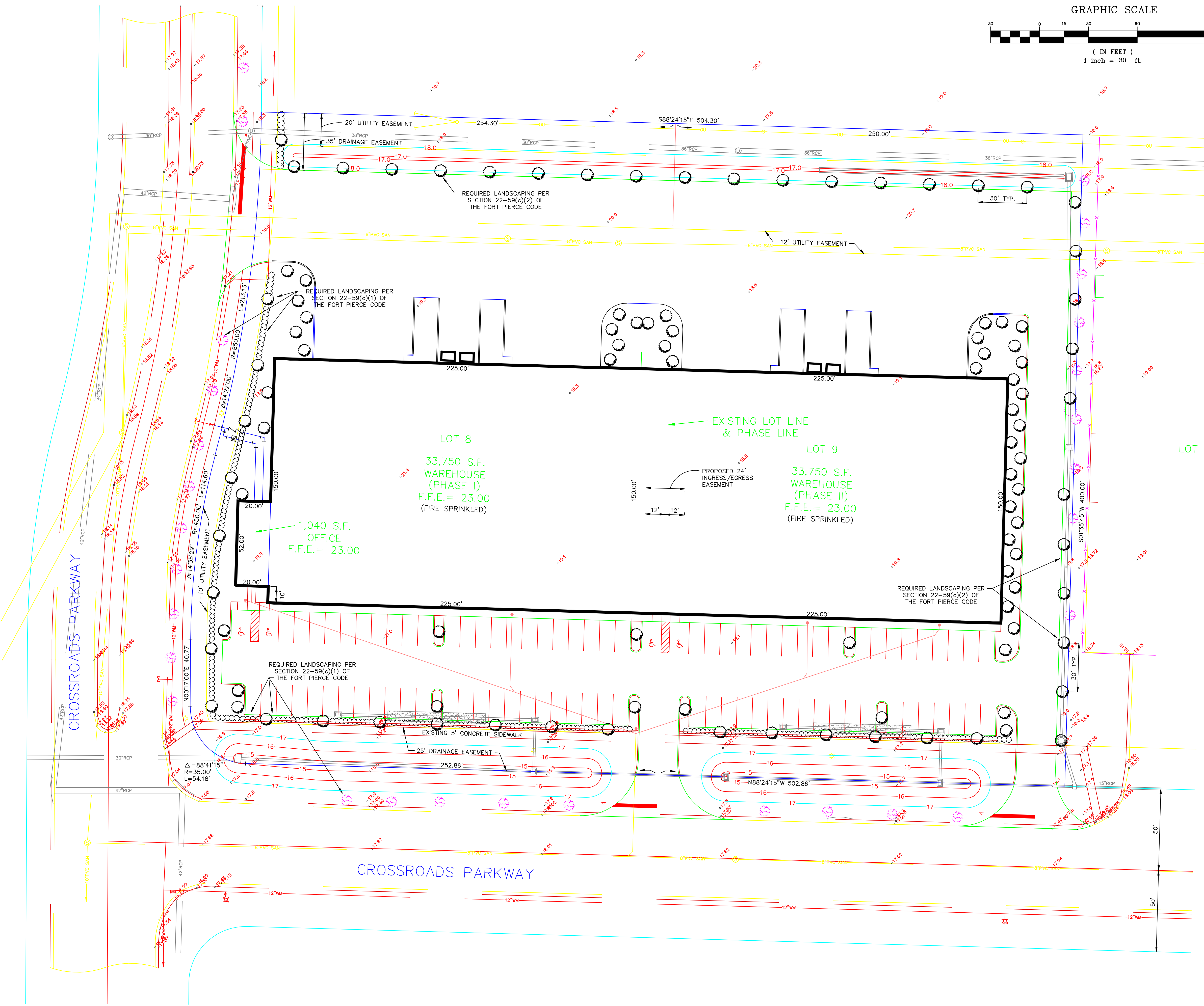
LOCATION MAP

LANDSCAPING NOTES:

1. PERIMETER TREES SHALL BE RED MAPLE, LIVE OAK AND LAUREL OAK.
2. SHRUBBERY SHALL BE ELEAGNUS OR OTHER APPROVED MATERIAL (MIN. 2' HIGH, 2' O.C.).
3. INTERIOR TREES SHALL BE PALMS OR OTHER APPROVED SPECIES.
4. ALL LANDSCAPE MATERIAL SHALL BE FLORIDA NO. 1 MINIMUM.
5. ALL TREES SHALL BE MIN. 1-1/2" CALIPER AND MIN. 8' IN HEIGHT.

LANDSCAPING REQUIREMENTS

TREES	
ALONG CROSSROAD PARKWAY (SOUTH)	470 L.F. X 10 FT./350 S.F./TREE = 13 TREES
ALONG CROSSROAD PARWAY (WEST)	315 L.F. X 10 FT./350 S.F./TREE = 9 TREES
ALONG ADJACENT PROPERTIES	810 L.F X 300 L.F./TREE = 27 TREES
SHRUBS	
ALONG CROSSROAD PARKWAY (SOUTH)	470 L.F. @ 2.0' O.C. = 235 SHRUBS
ALONG CROSSROAD PARWAY (WEST)	315 L.F. @ 2.0' O.C. = 158 SHRUBS



COMPUTER FILE REF. 9852BASE.DWG	FIELD BK./PG.


**CULPEPPER & TERPENING, INC.**

CONSULTING ENGINEERS & LAND SURVEYORS  
2980 SOUTH 25th STREET  
FORT PIERCE, FLORIDA 34981  
(561) 464-3537

- REVISIONS -		BY	DATE
REVISIONS PER CITY OF FORT PIERCE	RML	4-1-99	

	BY	DATE
DESIGNED	RML	
CALCS.		
DRAWN	GWR	2-19-99
DETAILED		
CHECKED		
APPROVED		

**TREASURE COAST ENTERPRISES, LLC.**

CONCEPTUAL LANDSCAPING PLAN

DATE: 2-19-99
HORIZ. SCALE: 1"=30'
VERT. SCALE: NONE
JOB No. 9852
SHEET 1 OF 1