

OFFERING SUMMARY

LEASE RATE:	\$2.75 SF/month [MG]
BUILDING SIZE:	2,263 SF
AVAILABLE SF:	778 SF

PROPERTY OVERVIEW

Modern flex space. Gilman Street corridor location. Easy access to I-80 Freeway and San Pablo Avenue. Suitable for many different business uses. Office available separately.

PROPERTY HIGHLIGHTS

JUSTIN WONG

O: 415.922.2900 x106
justin.wong@svn.com
CalDRE #01974254

WEN TUNG

O: 415.922.2900 x103
wen.tung@svn.com
CalDRE #01325346

KEVIN D. CHIN, CCIM

O: 415.922.2900 x101
kevinc@svn.com
CalDRE #00696127



JUSTIN WONG
O: 415.922.2900 x106
justin.wong@svn.com
CalDRE #01974254

WEN TUNG
O: 415.922.2900 x103
wen.tung@svn.com
CalDRE #01325346

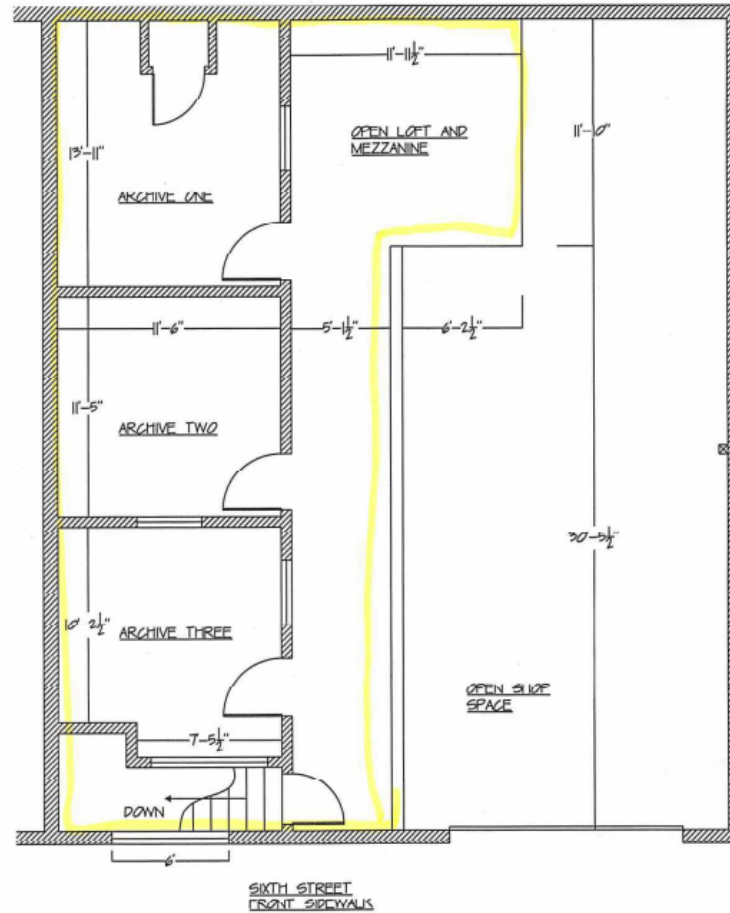
KEVIN D. CHIN, CCIM
O: 415.922.2900 x101
kevinc@svn.com
CalDRE #00696127

778

1270 SIXTH STREET
BERKELEY, CA 94710

EXISTING FLOOR PLAN SECOND FLOOR

DRAWN BY: JASON DEANTONIS FOR
MCGUTCHEON CONSTRUCTION 9/23/2010



JUSTIN WONG

O: 415.922.2900 x106

justin.wong@svn.com

CalDRE #01974254

WEN TUNG

O: 415.922.2900 x103

wen.tung@svn.com

CalDRE #01325346

KEVIN D. CHIN, CCIM

O: 415.922.2900 x101

kevinc@svn.com

CalDRE #00696127