

Morningside Business Center

630 SE 4th Street, Lee's Summit, Missouri



Office Suites for Lease

- ◆ 1,750 sf available
- ◆ Quiet office park setting
- ◆ Great access to 291 Hwy.
- ◆ Minutes from Downtown Lee's Summit
- ◆ Ample parking
- ◆ Move-in ready suites
- ◆ For lease at \$18.00/sf full-service

Exclusive Property Listing

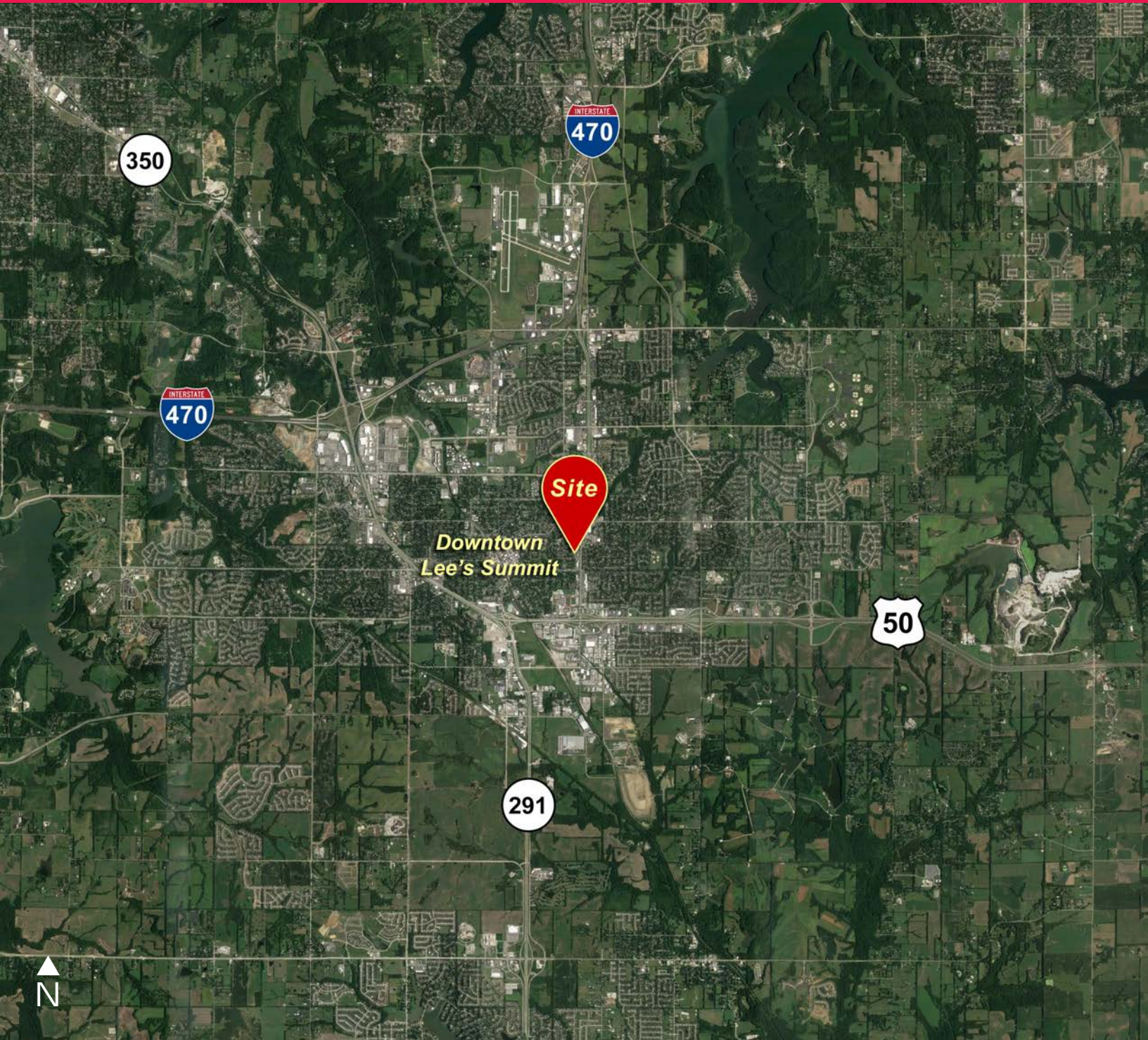
Trey W. DeRousse 816.268.4236 tderousse@ngzimmer.com



Procuring broker shall only be entitled to a commission calculated in accordance with the rates approved by our principal only if such procuring broker executes a brokerage agreement acceptable to us and our principal and the conditions as set forth in the brokerage agreement are fully and unconditionally satisfied. Although all information furnished regarding property for sale, rental, or financing is from sources deemed reliable, such information has not been verified and no express representation is made nor is any to be implied as to the accuracy thereof and it is submitted subject to errors, omissions, change of price, rental or other conditions, prior sale, lease or financing, or withdrawal without notice and to any special conditions imposed by our principal.

Morningside Business Center

630 SE 4th Street, Lee's Summit, Missouri

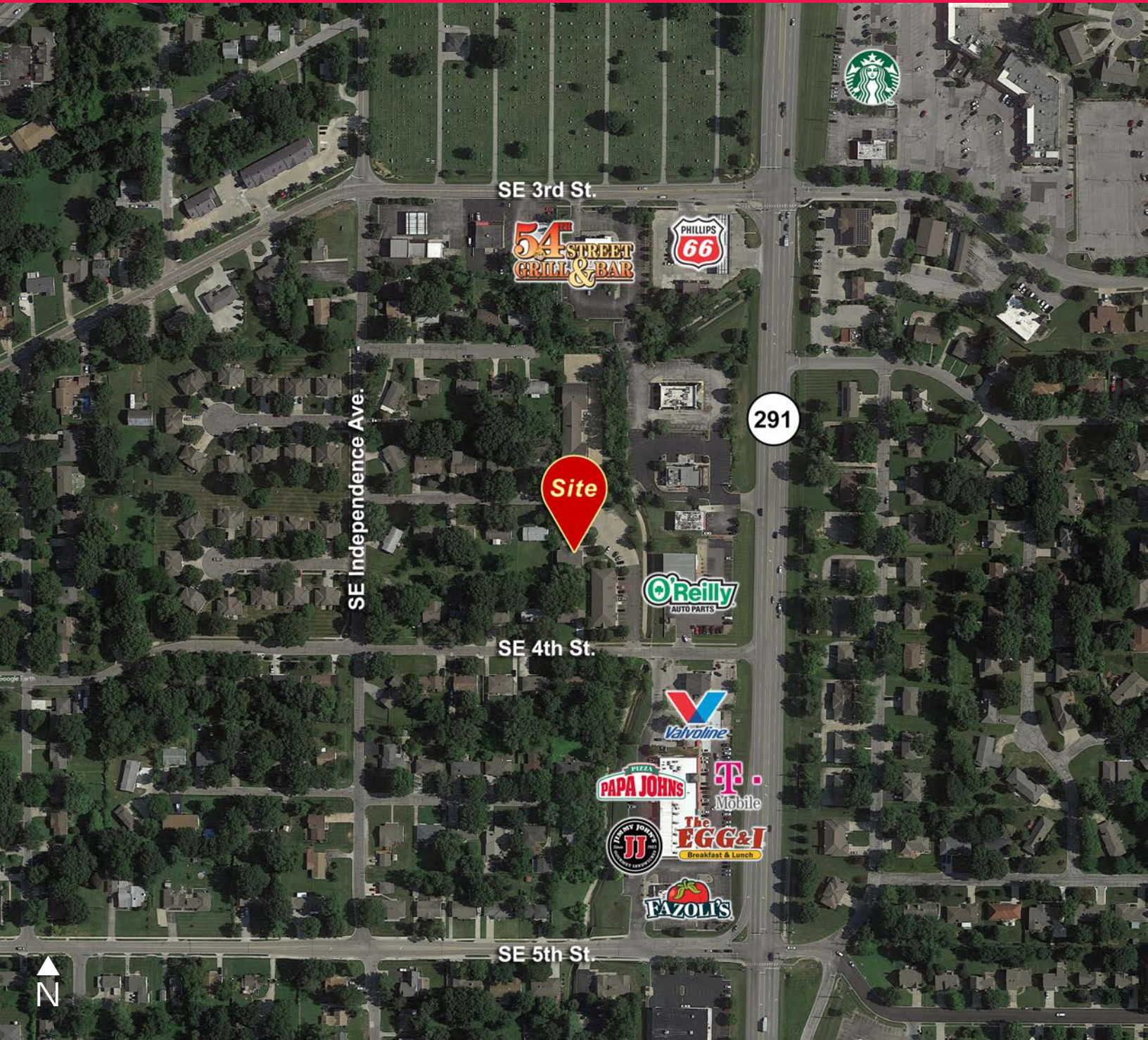


Exclusive Property Listing

Trey W. DeRousse 816.268.4236 tderousse@ngzimmer.com

Morningside Business Center

630 SE 4th Street, Lee's Summit, Missouri



Exclusive Property Listing

Trey W. DeRousse 816.268.4236 tderousse@ngzimmer.com