

FOR LEASE

# WAREHOUSE 1, 8 ASHTON ROAD, RUTHERGLEN, G73 1UB

TO LET, WAREHOUSE & SMALL OFFICES  
24,142 Sq Ft



## SUMMARY

- Modern warehouse
- Small office content
- 5.0m eaves
- Racking in situ
- 1 level access loading door
- Perimeter palisade fencing



# FOR LEASE 8 ASHTON ROAD

24,142 sq ft  
**WAREHOUSE & SMALL OFFICES**  
AVAILABLE NOW



## AVAILABLE SPACE

SPACE	AREA (SQFT)
Warehouse	23,142
Offices	1,000
<b>TOTAL</b>	<b>24,142</b>

Potential to combine with neighbouring 34,026 sqft warehouse property to give a total of 58,168 sqft.

## DISPOSAL TERMS

- + Lease: New FRI Lease
- + Rent: On Application
- + Rates: On Application
- + Service Charge: On Application



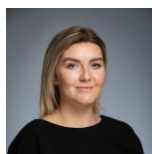
## CONTACT US



### DAVID REID

+44 141 204 7733  
+44 7545 276119

[david.c.reid@cbre.com](mailto:david.c.reid@cbre.com)



### HANNAH LOWE

+44 141 204 7666  
+44 791 765 1872

[hannah.lowe@cbre.com](mailto:hannah.lowe@cbre.com)

CBRE Limited on their behalf and for the Vendors or Lessors of this property whose Agents' they are, give notice that:

1. These particulars are set out as a general outline only for guidance to intending Purchasers or Lessees, and do not constitute any part of an offer or contract.
2. Details are given without any responsibility and any intending Purchasers, Lessees or Third Parties should not rely on them as statements or representations of fact, but must satisfy themselves by inspection or otherwise as to the correctness of each of them.
3. No person in the employment of CBRE Limited has any authority to make any representation or warranty whatsoever in relation to this property.
4. Unless otherwise stated, all prices and rents are quoted exclusive of VAT. Subject to contract, March 2019.

[www.cbre.co.uk](http://www.cbre.co.uk)

**CBRE**