



FENWICK HALL ALLEE | JOHNS ISLAND, SC

FENWICK HALL ALLEE

1,710 SF - 10,182 SF RESTAURANT AND RETAIL AVAILABLE



PROJECT
DETAILS

AVAILABLE SPACE

- Building 1:
- Suite A: 2,470 SF
 - Suite B: 1,710 SF
 - Combined: 4,180 SF
- Building 2:
- Suite A: 1,852 SF
 - Suite B: 1,867 SF
 - Suite C: 2,283 SF
 - Combined: 6,002 SF

TRAFFIC COUNTS

34,277 ADT on Maybank Hwy

PROPERTY
HIGHLIGHTS

- Retail and restaurant space with customizable outdoor seating area
- Flexible suite configurations
- High-visibility signage opportunities
- Adjacent to residential growth corridor
- Located in close proximity to multiple neighborhoods and apartment complexes with direct walking, biking, and golf cart access

COMPLETION


Q3 2027

COUNTY

Charleston County

MARKET

Charleston - North Charleston

	1 MILE	3 MILE	5 MILE
 POPULATION	3,634	24,594	87,523
 DAYTIME POPULATION	1,983	16,283	80,277
 MEDIAN HH INCOME	\$115,981	\$115,532	\$100,153

RESIDENTIAL SURGE:
600+ PLANNED UNITS NEARBY

- Sea Island Preserve: 387 homes
- Orange Hill: 120 homes approved
- Sanderling: 56 townhomes (BTR)
- Sweetgrass Preserve: 50 homes

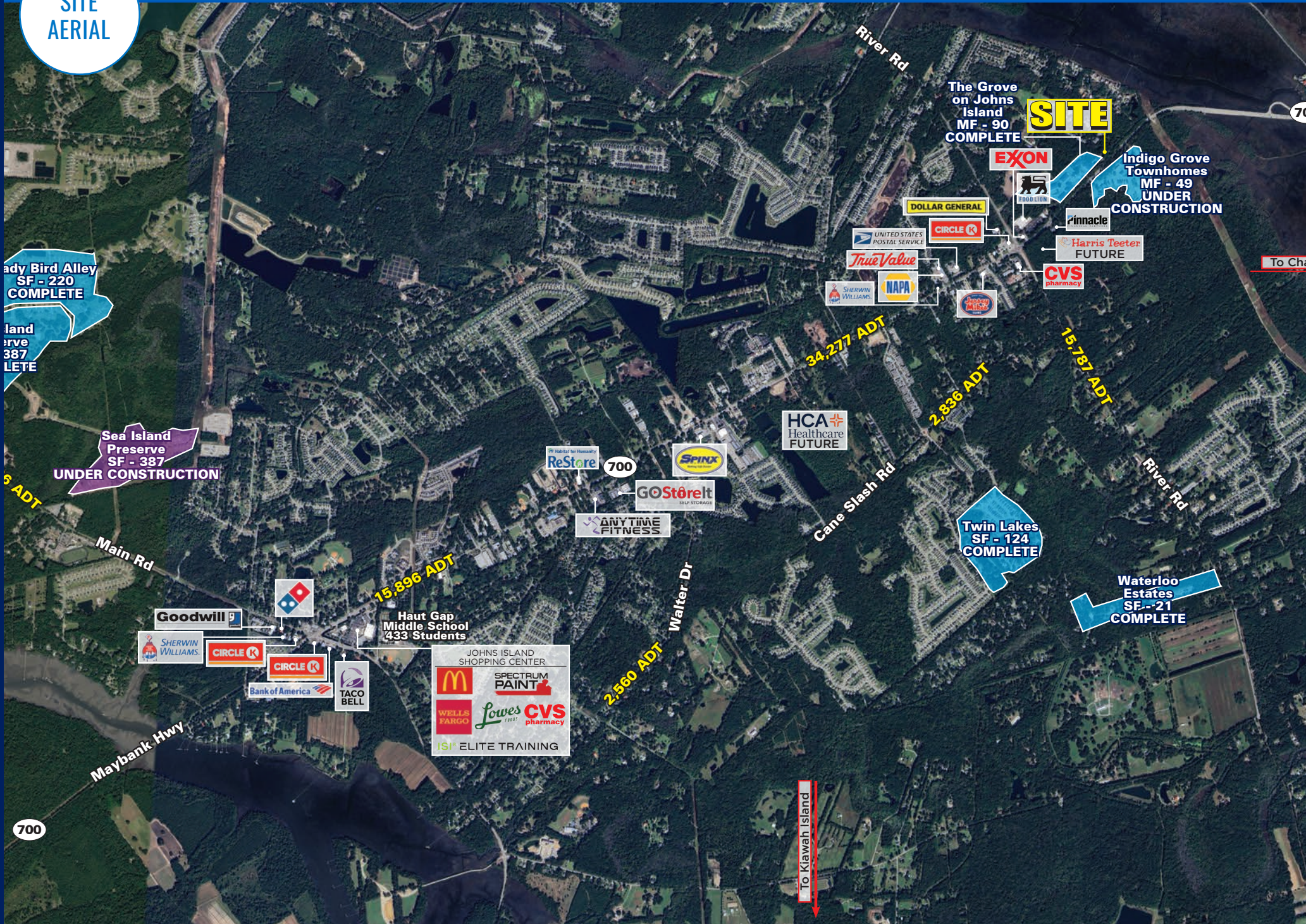
INFRASTRUCTURE:

- New water main expansion enabling higher-density development
- Maybank Hwy corridor improvements underway
- City-led roadway and stormwater investments

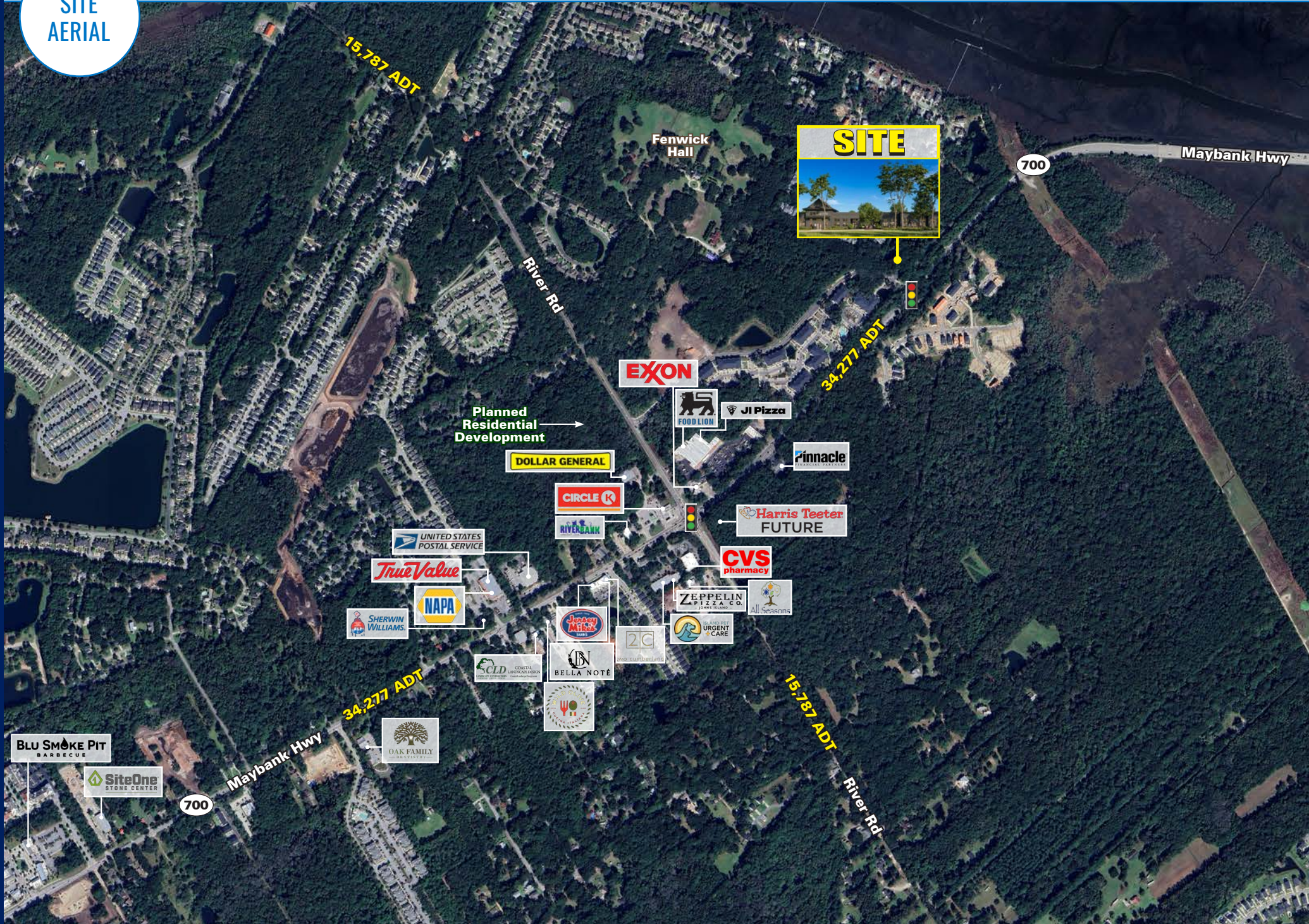
ECONOMIC MOMENTUM:

- SC grew 1.7% in 2024 - 2025 - driven by domestic migration. The fastest growing state in the US.
- \$118K median HH income (1.5x state average)
- Average new home price \$500K - \$800K+ range

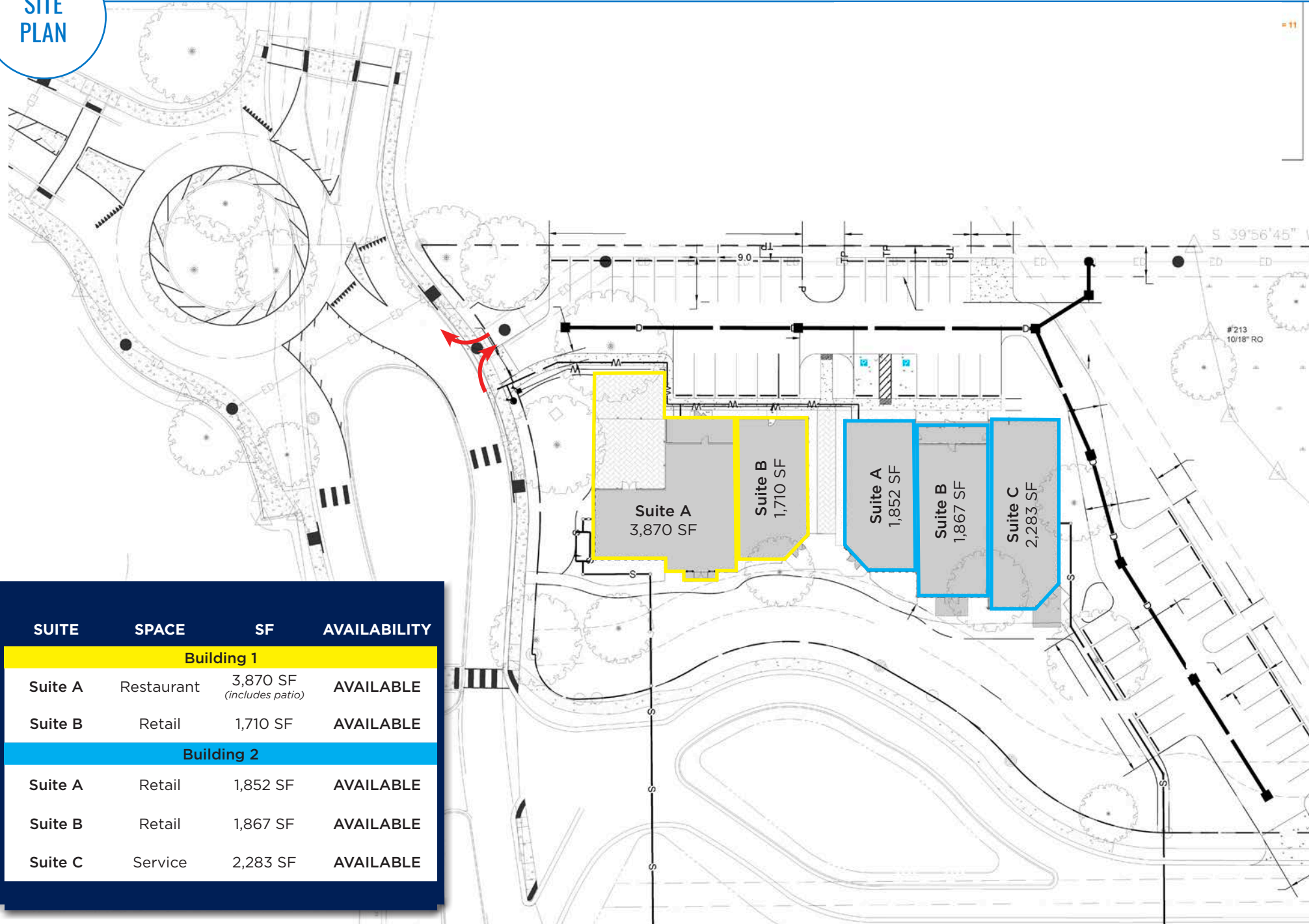
SITE AERIAL



SITE AERIAL



SITE PLAN



SUITE	SPACE	SF	AVAILABILITY
Building 1			
Suite A	Restaurant	3,870 SF <i>(includes patio)</i>	AVAILABLE
Suite B	Retail	1,710 SF	AVAILABLE
Building 2			
Suite A	Retail	1,852 SF	AVAILABLE
Suite B	Retail	1,867 SF	AVAILABLE
Suite C	Service	2,283 SF	AVAILABLE

PROJECT
TIMELINE

FENWICK HALL ALLEE • 1,710 - 10,182 SF AVAILABLE • RESTAURANT AND RETAIL

SITE PREP
Q2 2026

FOUNDATION
Q3 2026

VERTICAL BUILD
Q4 2026

FINISHING
Q2 2027

GRAND OPENING
Q3 2027

● In Progress ● Upcoming ● Project Opening



Inspiration Photos



RENDERINGS





FENWICK HALL ALLEE | JOHNS ISLAND, SC

FENWICK HALL ALLEE

1,710 SF - 10,182 SF AVAILABILITY

JOSEPH PURZE

843.735.2559
JPURZE@ATLANTICRETAIL.COM

NED SPRATT

704.998.1891
NSPRATT@ATLANTICRETAIL.COM



CHARLESTON

701 EAST BAY ST, SUITE 303
CHARLESTON, SC

ALBANY

ATLANTA

BOSTON

CHARLOTTE

LOS ANGELES

NEW YORK CITY

ORLANDO

PITTSBURGH

WEST PALM BEACH

WWW.ATLANTICRETAIL.COM

 [LINKEDIN.COM/COMPANY/ATLANTIC-RETAIL-PROPERTIES](https://www.linkedin.com/company/atlantic-retail-properties)

 [INSTAGRAM.COM/ATLANTIC_RETAIL/](https://www.instagram.com/atlantic_retail/)

