



Brand New Retail Opportunity

Harbor East

520 S. Caroline Street, Baltimore, MD



Please Contact the Retail Advisory Group

Bryan Cyphers

Vice President

443 931 3361

bryan.cyphers@jll.com

Ana Henrich

Sr. Associate

443 451 2619

ana.henrich@jll.com

Jeff Bach

Managing Director

443 931 3354

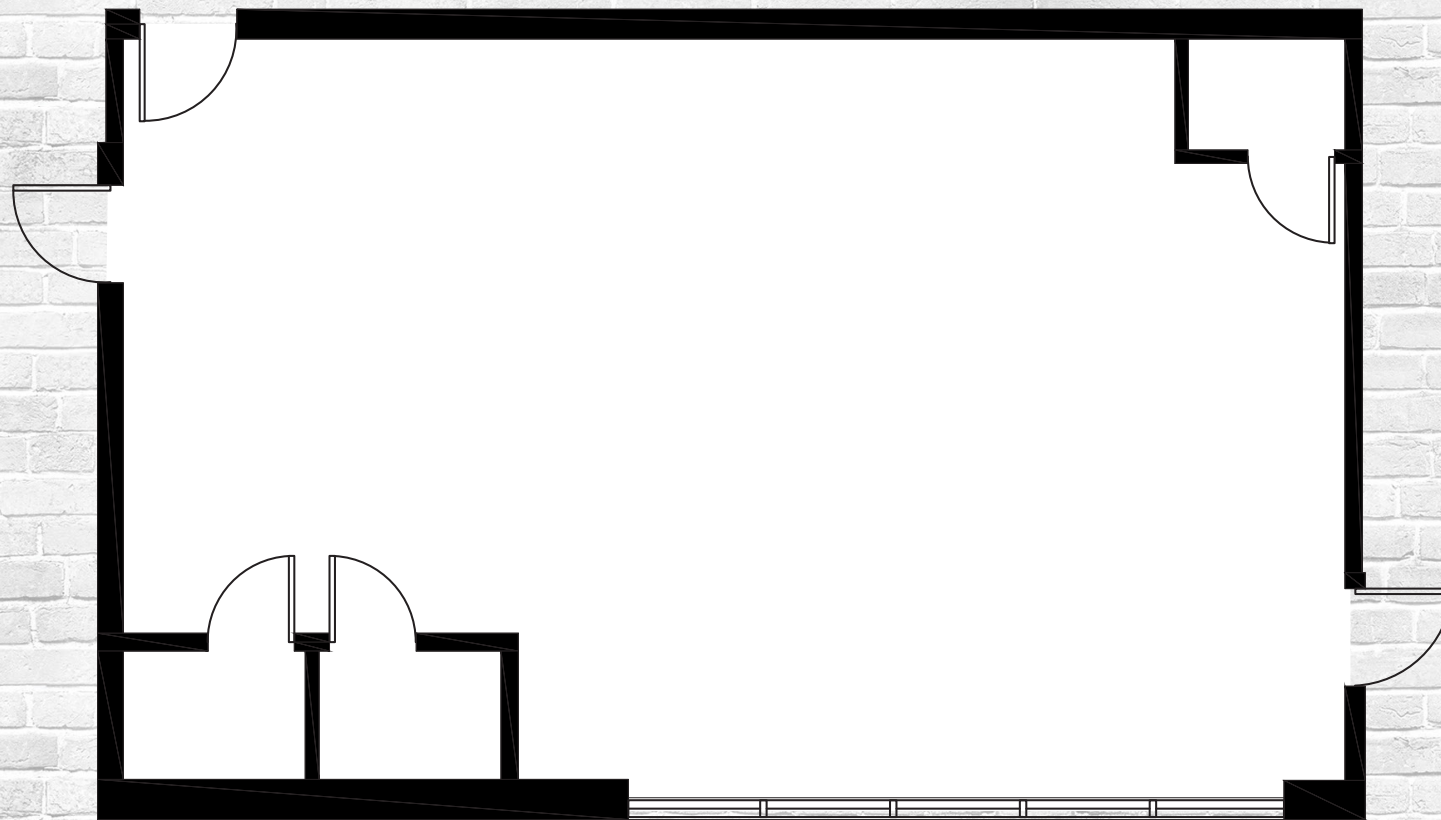
jeff.bach@jll.com

The Caroline

520 S. Caroline Street

860 SF

of street level retail



Facing N. Caroline Street and visible from Fleet Street, The Caroline is at the crossroads of Baltimore's most premier neighborhoods: Harbor East, Fell's Point and Harbor Point. Just delivered is a new luxury apartment building atop **street level retail space** including a **fully built-out 860 SF move in ready space**. With two large apartment development projects right across the street and upscale retailers steps away, The Caroline is in the center of Baltimore's lively neighborhood lifestyle.

