



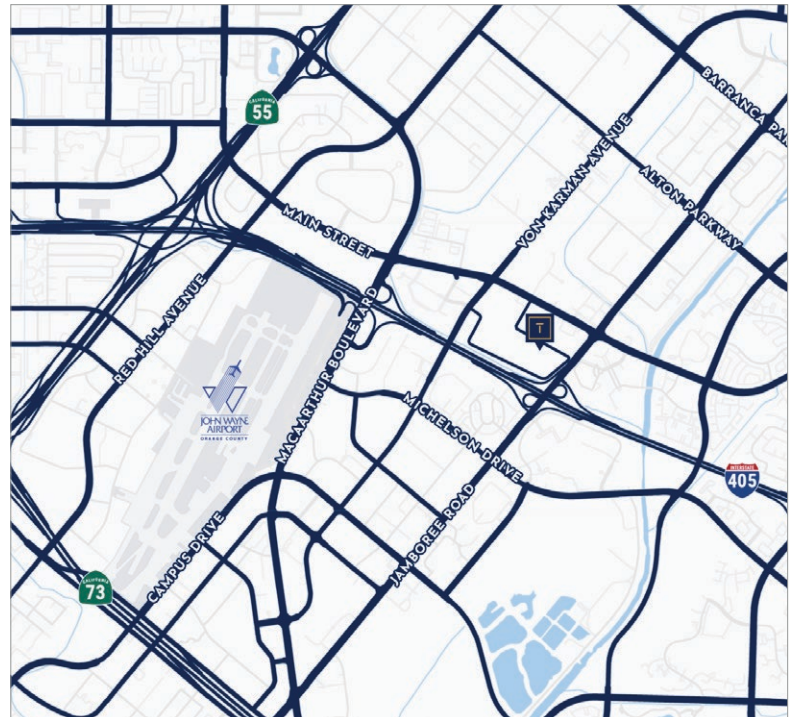
FOR SUBLEASE - ±9,746 SF FLEX/INDUSTRIAL

2552-A WHITE ROAD, IRVINE, CALIFORNIA 92614



PROPERTY FEATURES:

- » ±9,746 SF Flex/Industrial Unit
- » ±6,367 SF of Deluxe Office Space
- » ±3,379 SF of Warehouse
- » Generous Surface Parking (3:1,000 SF)
- » Two (2) Ground Level Loading Doors
- » 400 Amps of Power (verify)
- » 14' to 17' Warehouse Clear Height
- » Flexible 5.1 "Multi-Use" Zoning (Uses Include, Industrial, R&D, Manufacturing, and Professional)
- » Amenity Rich Area with Fast-Fresh and Upscale Dining Venues within Walking Distance
- » Immediate Access to San Diego (405) Freeway at Jamboree Road
- » Direct Deal with Property Owner Possible



CONTACT US:

TIDEMARK
Real Estate Services
BROKERAGE | INVESTMENTS
PROPERTY MANAGEMENT

TAYLOR SNYDER, MBA
Senior Vice President
(949) 533-1321
taylor@tidemarkrealestate.com
DRE Lic. 02092420

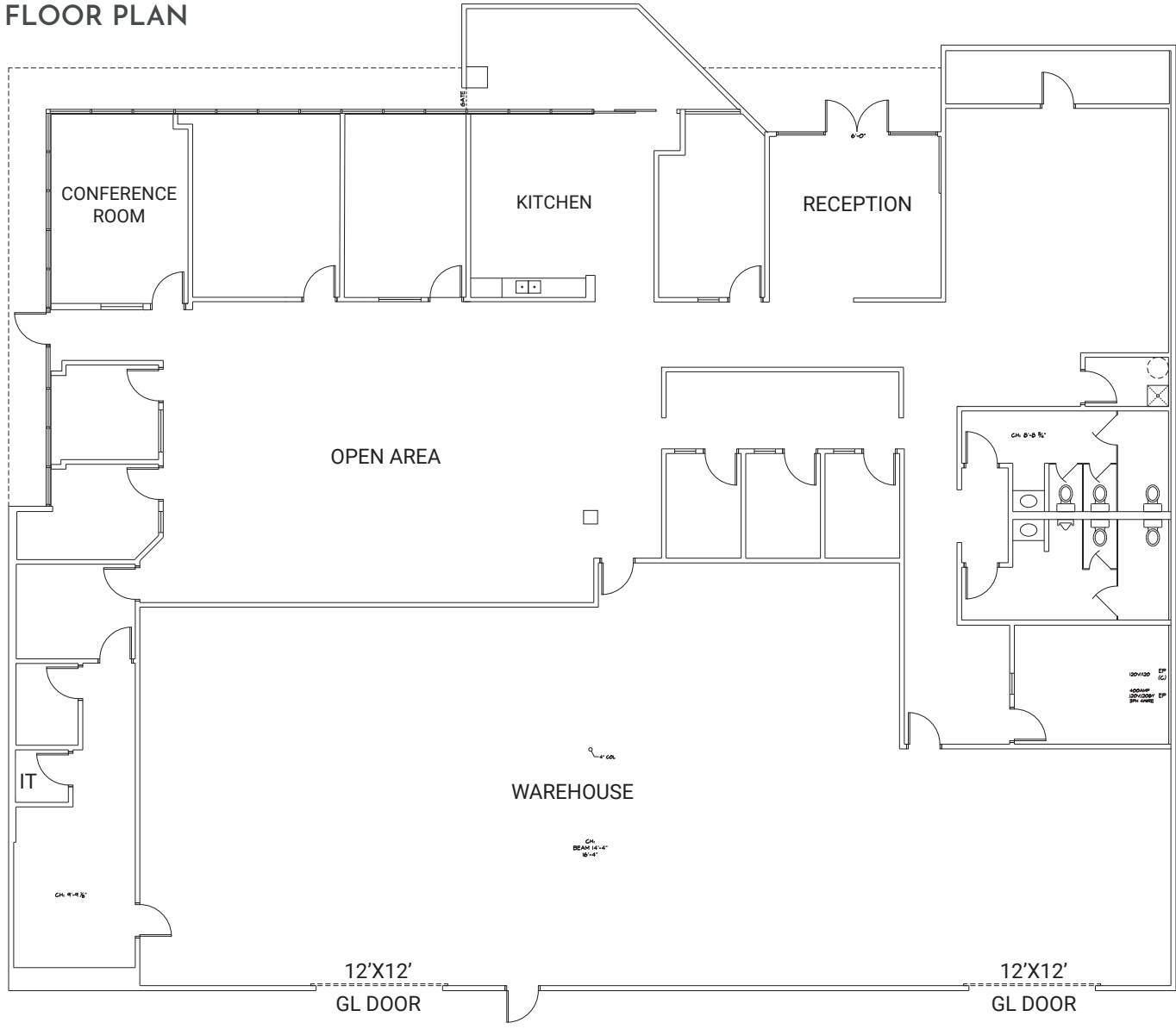
PAT LACEY
Executive Vice President
(714) 875-4134
pat@tidemarkrealestate.com
DRE Lic. 00988663

STEPHEN MARGARETIS
Senior Associate
(949) 439-1988
stephen@tidemarkrealestate.com
DRE Lic. 02112014

DISCLAIMER: The information contained herein has been obtained from the property owner or other third party and is provided to you without verification as to accuracy. We (Tidemark Real Estate Services, Inc., its brokers, employees, agents, principals, officers, directors and affiliates) make no warranty or representation regarding the information, property, or transaction. You and your attorneys, advisors and consultants should conduct your own investigation of the property and transaction.



FLOOR PLAN



DISCLAIMER: The information contained herein has been obtained from the property owner or other third party and is provided to you without verification as to accuracy. We (Tidemark Real Estate Services, Inc., its brokers, employees, agents, principals, officers, directors and affiliates) make no warranty or representation regarding the information, property, or transaction. You and your attorneys, advisors and consultants should conduct your own investigation of the property and transaction.

