

3,400 SF Single Tenant Building For Lease

16500 MANCHESTER RD
GROVER, MO 63040



16500 MANCHESTER ROAD, GROVER, MO
63040

Building Highlights

Overview

- 3,400 SF Available

Property Type

- Office / Retail

Listing Type

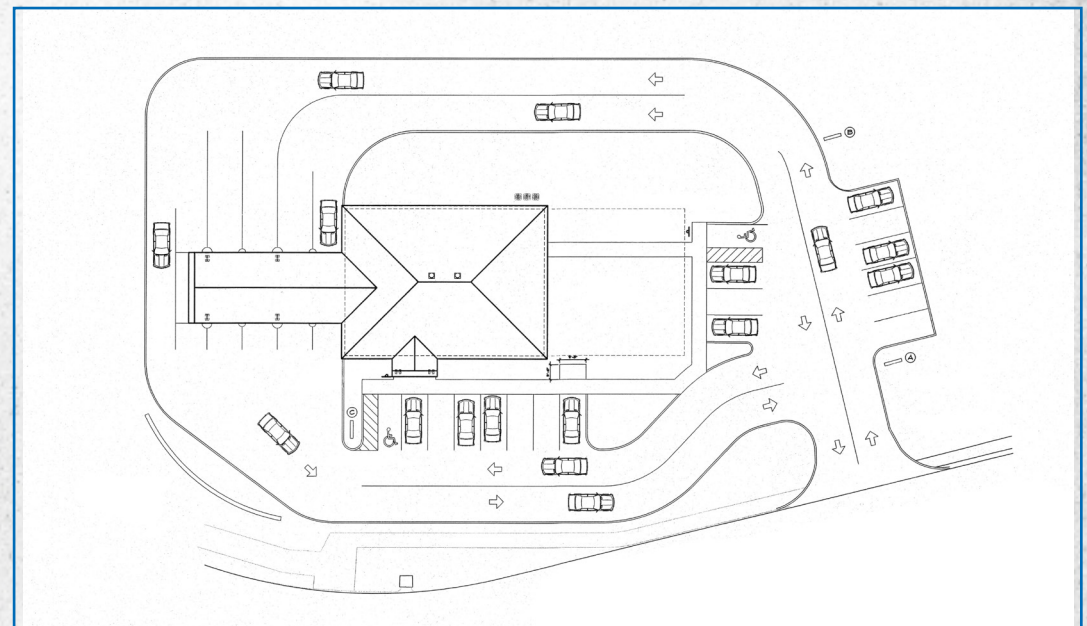
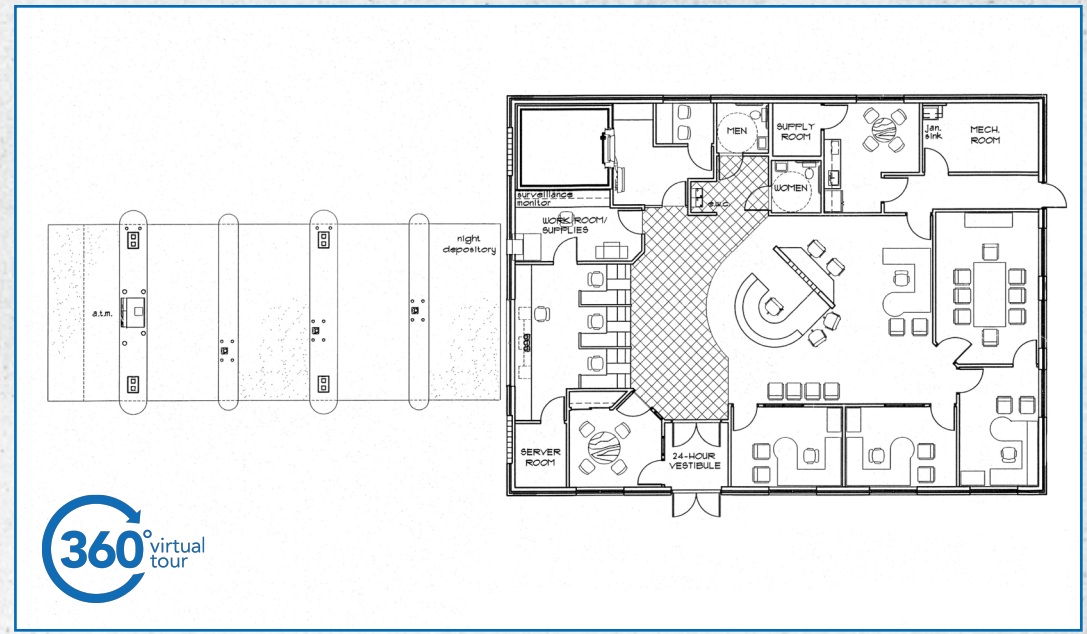
- Lease

Property Highlights

- Former bank branch
- Ample surface parking
- Plug and play option for financial institutions.
- Extensive buildout in place for other professional services.
- Drive through

Lease Rate

- Starting at \$25.00/SF, Full Service



DEMOGRAPHICS

	1 MILE	3 MILE	5 MILE
Population	11,443	42,518	97,528
Employees	2,241	15,931	28,222
Median Household Income	\$112,791	\$122,164	\$123,486



FOR FURTHER INFORMATION, PLEASE CONTACT:

Ben Albers

Senior Managing Director

t 314-628-0439

balbers@nzimmer.com

Jay Travis

Director

t 314-628-0442

jtravis@nzimmer.com

8235 Forsyth Boulevard, Suite 200
St. Louis, MO 63105

nrmkzimmer.com

NEWMARK
ZIMMER

The information contained herein has been obtained from sources deemed reliable but has not been verified and no guarantee, warranty or representation, either express or implied, is made with respect to such information. Terms of sale or lease and availability are subject to change or withdrawal without notice.