

501 STEPHENSON HWY
TROY, MICHIGAN



**SIGNATURE
ASSOCIATES**
KNOW SIGNATURE | KNOW RESULTS

INDUSTRIAL FOR LEASE
3,873-40,914 Square Feet Available



PROPERTY FEATURES

- 3,873-40,914 square feet available
- 400-4,990 square feet of office space
- Stephenson Highway frontage just off I-75
- Finish-to-suit
- Zoned IB
- 12'-18' clear height
- (4) 10x14, 10x16 grade level doors, (1) truckwell
- New parking lot
- Adjacent suites may be combined
- Asking lease rates are determined by size and location of space leased
- 2000 amps, 480 volts power
- Lease Rate: \$6.50-\$10.00/sq. ft. NNN



For more information, please contact:

JOHN BOYD
(248) 948 0102
jboyd@signatureassociates.com

PAUL HOGE
(248) 948 0103
paulhoge@signatureassociates.com

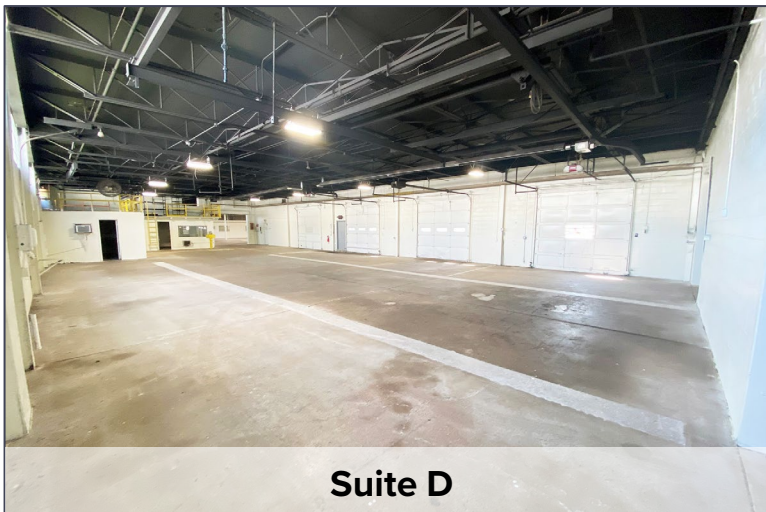
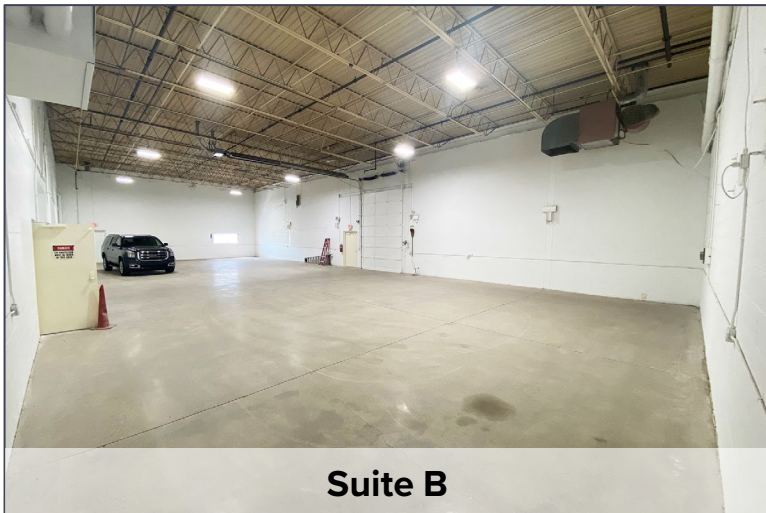
KRIS PAWLOWSKI
(248) 359 3801
kpawlowski@signatureassociates.com

501 Stephenson Hwy – Troy, Michigan

Industrial For Lease

3,873-40,914
Square Feet
AVAILABLE

Additional Images



For more information, please contact:

JOHN BOYD
(248) 948 0102

PAUL HOGE
(248) 948 0103

KRIS PAWLOWSKI
(248) 359 3801

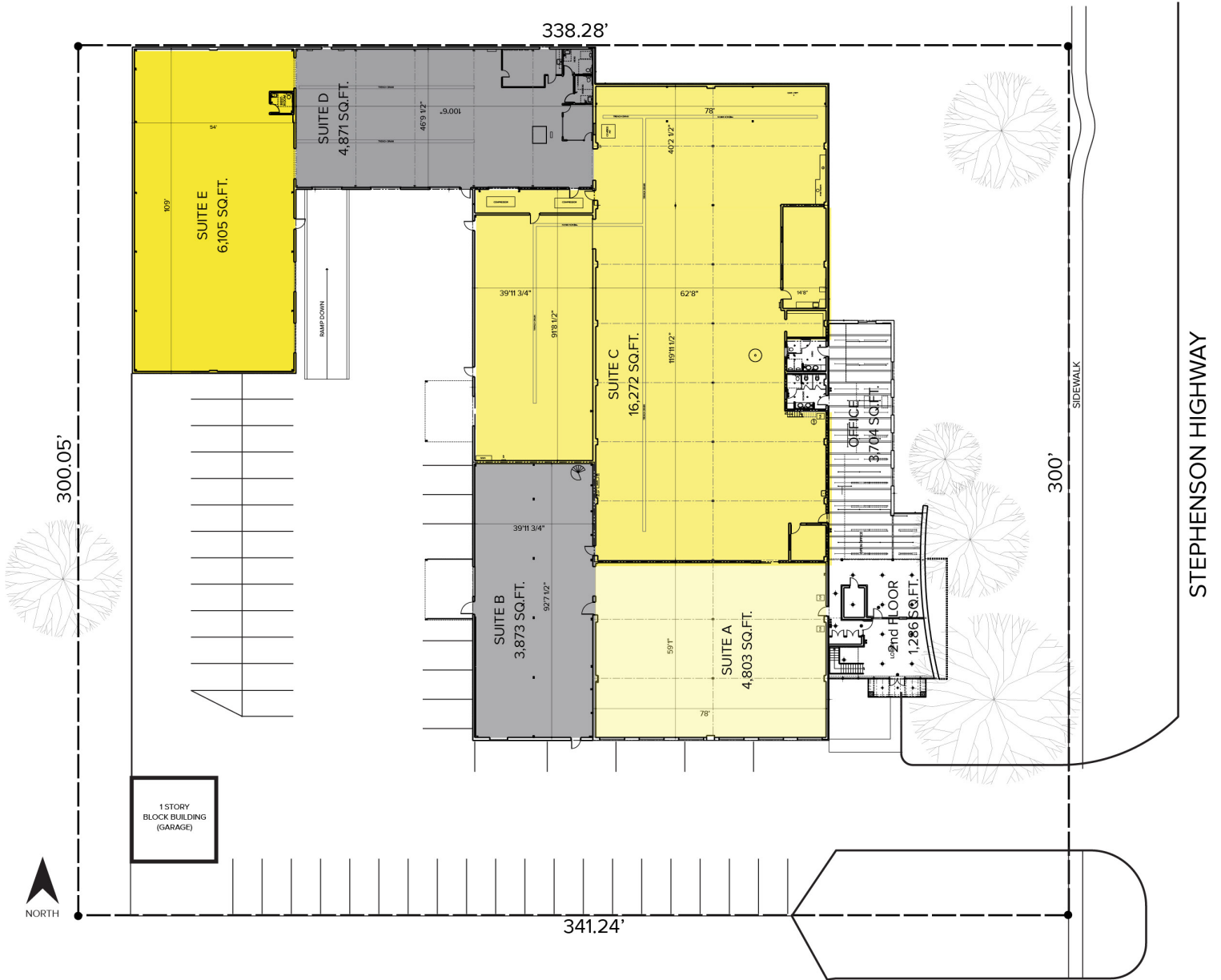
SIGNATURE ASSOCIATES
One Towne Square, Suite 1200
Southfield, MI 48076
www.signatureassociates.com

501 Stephenson Hwy – Troy, Michigan

Industrial For Lease

3,873-40,914
Square Feet
AVAILABLE

Site Plan



For more information, please contact:

JOHN BOYD
(248) 948 0102

PAUL HOGE
(248) 948 0103

KRIS PAWLOWSKI
(248) 359 3801

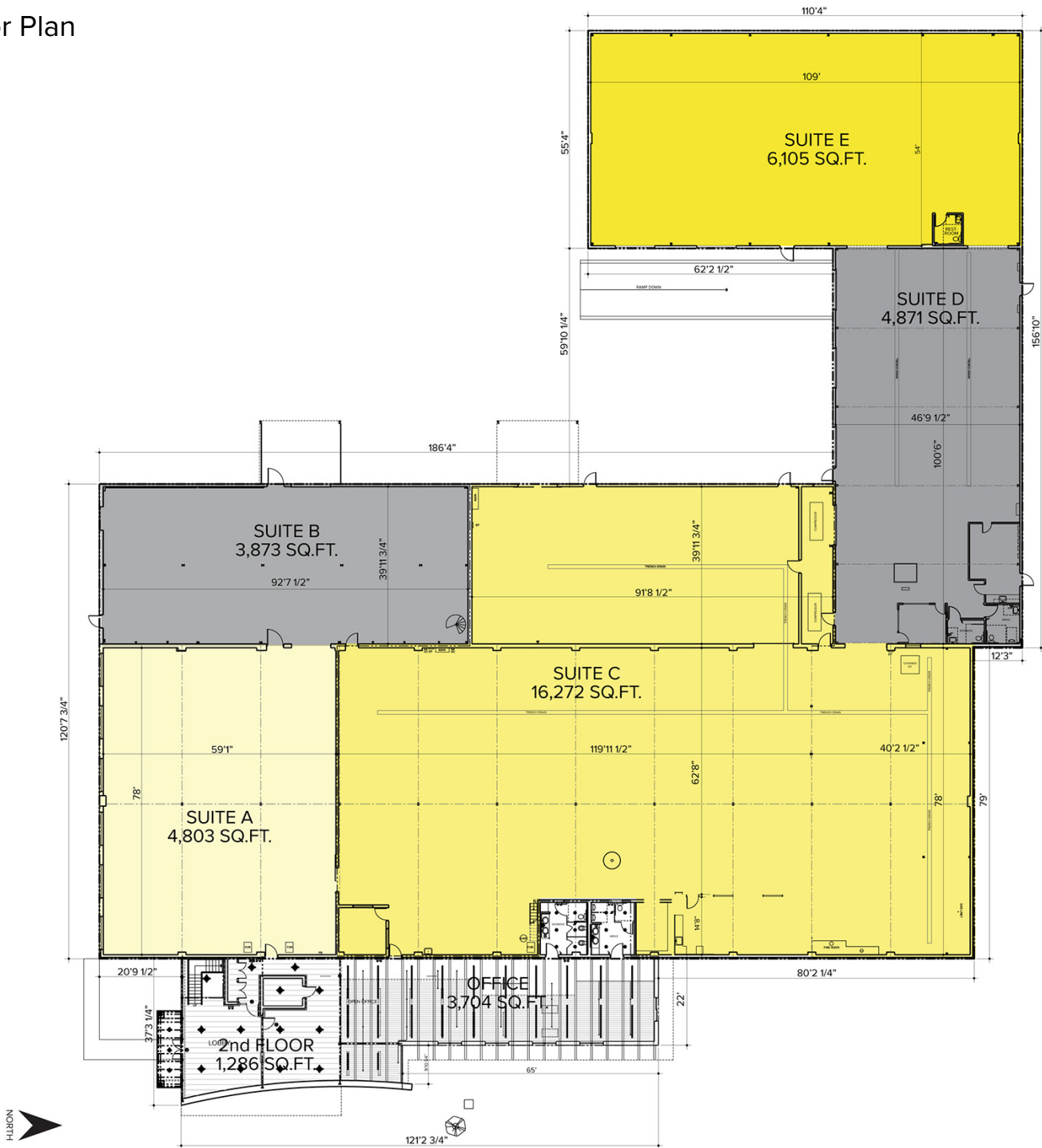
SIGNATURE ASSOCIATES
One Towne Square, Suite 1200
Southfield, MI 48076
www.signatureassociates.com

501 Stephenson Hwy – Troy, Michigan

Industrial For Lease

3,873-40,914
Square Feet
AVAILABLE

Floor Plan



For more information, please contact:

JOHN BOYD
(248) 948 0102

PAUL HOGE
(248) 948 0103

KRIS PAWLOWSKI
(248) 359 3801

SIGNATURE ASSOCIATES
One Towne Square, Suite 1200
Southfield, MI 48076
www.signatureassociates.com

501 Stephenson Hwy – Troy, Michigan

Industrial For Lease

3,873-40,914
Square Feet
AVAILABLE

Aerial



For more information, please contact:

JOHN BOYD
(248) 948 0102

PAUL HOGE
(248) 948 0103

KRIS PAWLOWSKI
(248) 359 3801

SIGNATURE ASSOCIATES
One Towne Square, Suite 1200
Southfield, MI 48076
www.signatureassociates.com