

# PARKSIDE MEDICAL CENTER

8990 GARFIELD AVE.  
RIVERSIDE, CA 92503

**Brett Larson, JD, CCIM**  
Managing Director  
951.600.8634 x701  
brett.larson@svn.com  
CalDRE #01947115

# Property Summary



## PROPERTY SUMMARY

Available Units:	Suite 8 & Suite 10
	1,245 - 1,267 SF
Lease Rate:	\$1.25 SF/mo. [MG]
Year Built:	1984
Building Size:	16,500 SF
Market:	Inland Empire
Submarket:	West Riverside County

## PROPERTY OVERVIEW

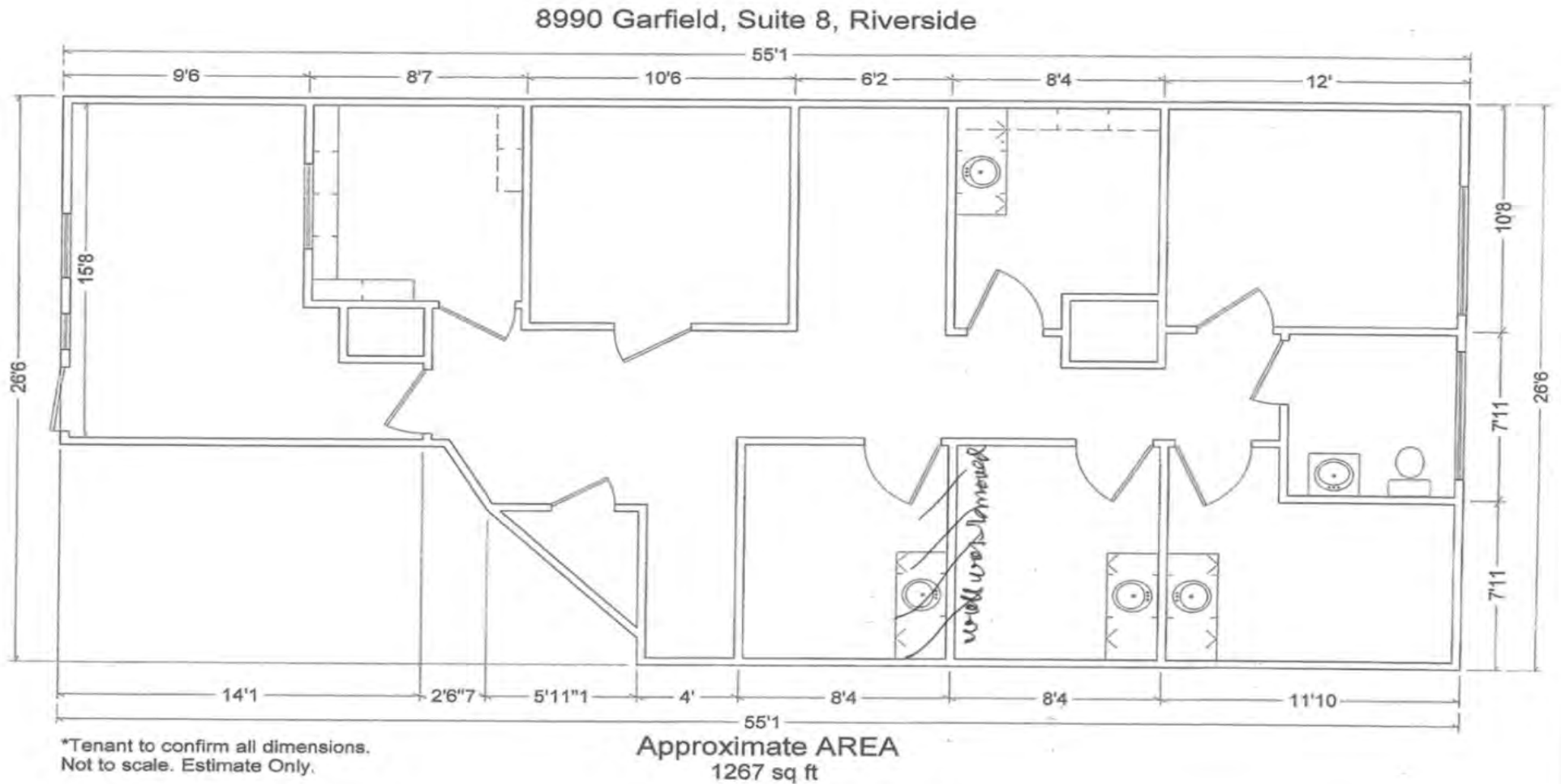
Parkside Medical Center is a seasoned medical building with convenient access to Parkview Community Hospital in Riverside. The project offers competitive lease rates and move-in ready suites are available.

## PROPERTY HIGHLIGHTS

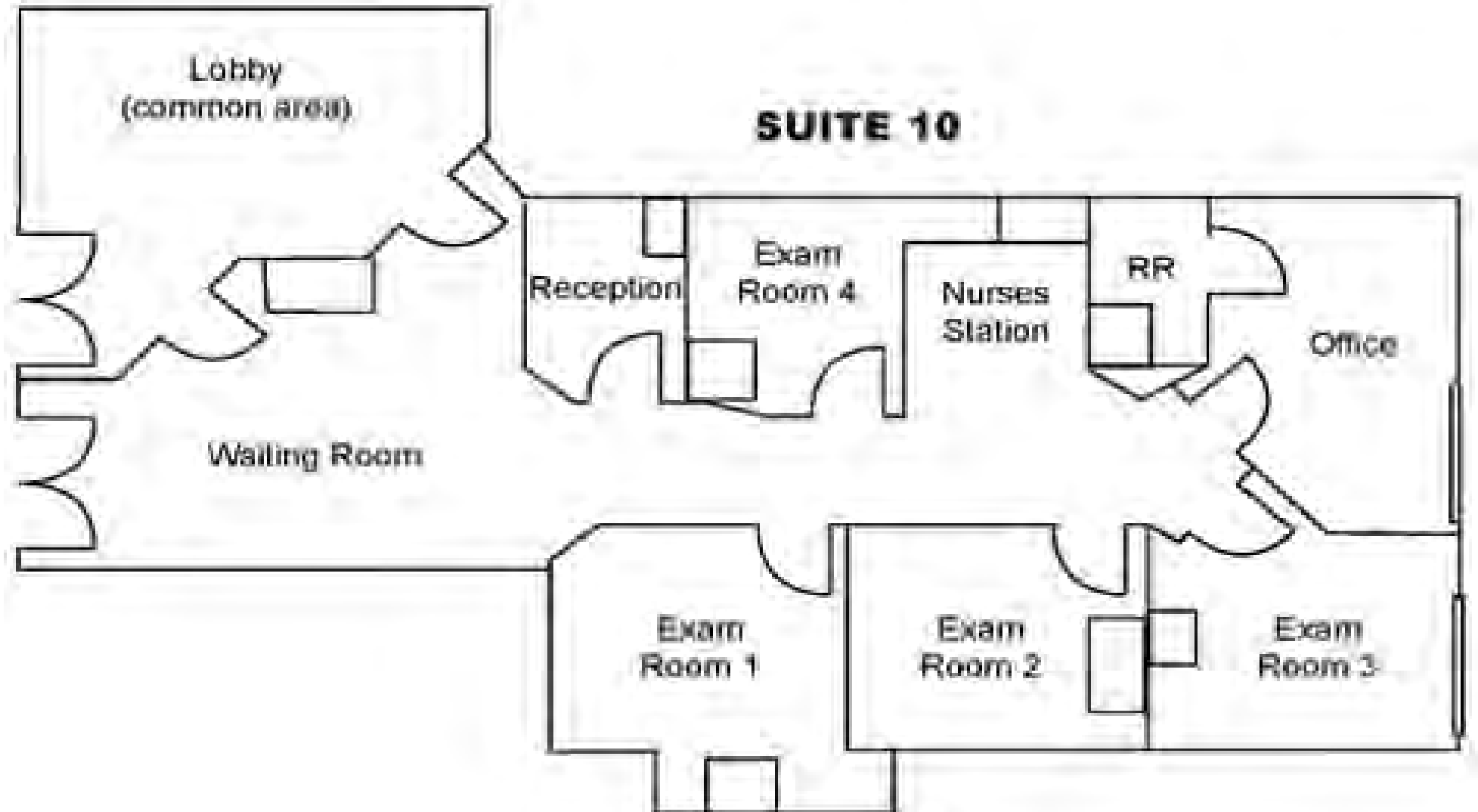
- Conveniently located off Magnolia Ave. in Riverside next to Parkview Community Hospital
- Competitive lease rates
- Fully improved move-in ready suites available
- Diverse tenant mix within the project
- Two-story, elevator served building
- Free on-site surface parking



# Floor Plan - Suite 8



# Floor Plan - Suite 10

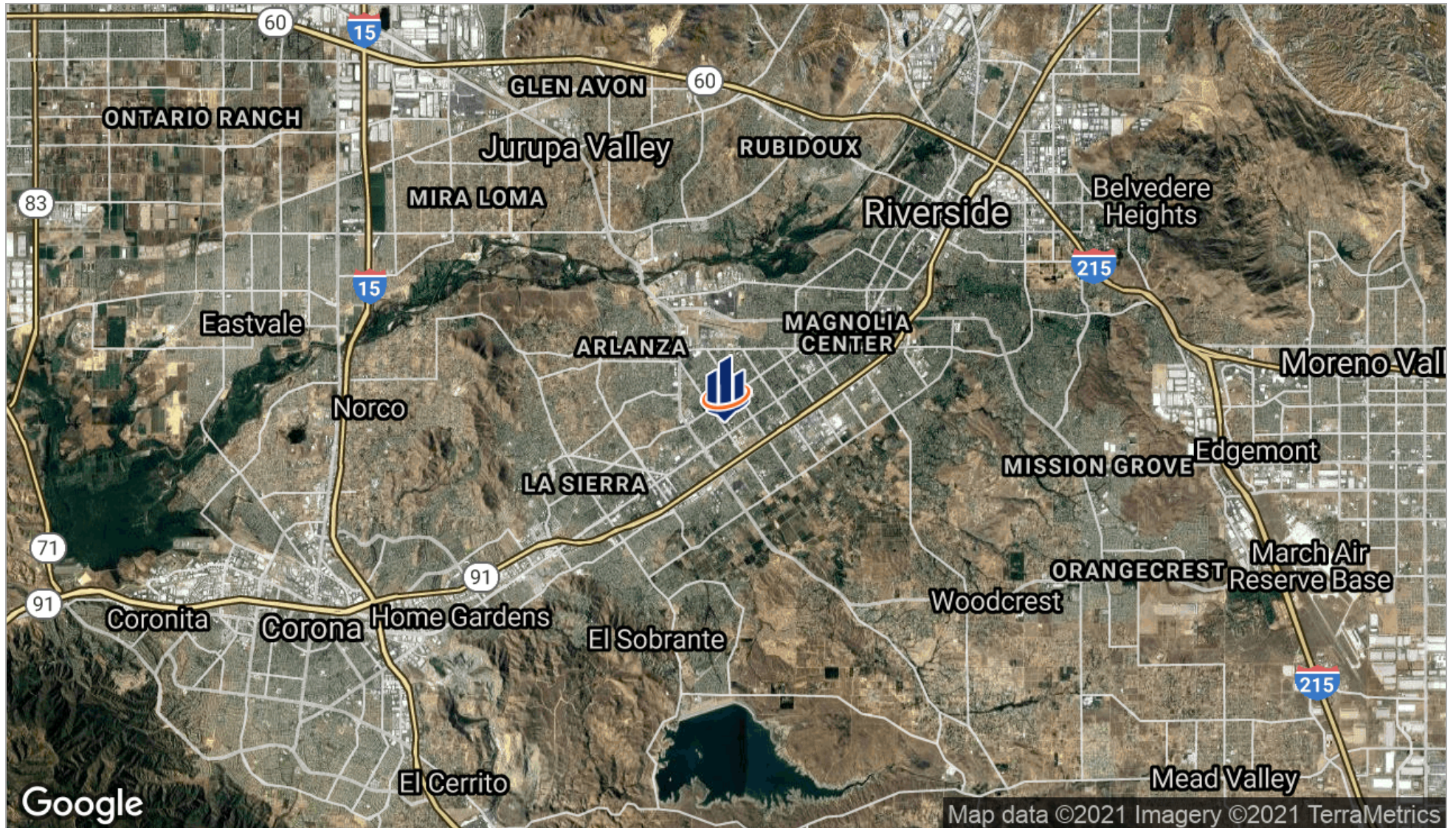


# Aerial





# Location Map







25425 Jefferson Ave., Suite 101  
Murrieta, CA 92562  
951.600.8634 x701  
[www.svninsight.com](http://www.svninsight.com)